

# ROPEX 2008

May 16-18 at ESL Sports Centre

2700 Brighton Henrietta Townline Road, Henrietta, NY

Friday: 11-6 • Saturday: 10-5 • Sunday: 10-3

Free Admission and Parking!

## USPS First Day Ceremony!



May 16 at 10:15

72-cent Canada/Mexico Airmail Rate

94-cent International Airmail Rate



May 17

National First Day of Sale  
Minnesota Statehood  
Sesquicentennial



## Themes

Friday — 100<sup>th</sup> Anniversary of Washington/Franklin Definitives

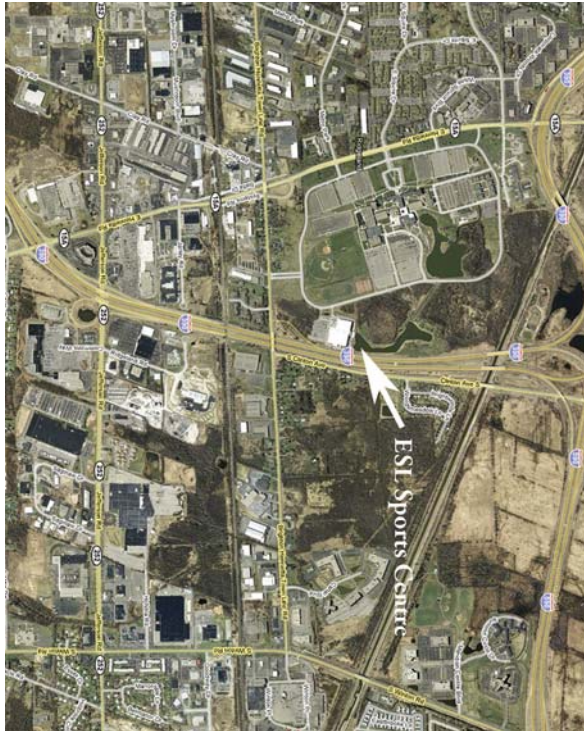
Saturday — Switzerland

Sunday — Scouting Around the World



## Annual Conventions

American Helvetia Philatelic Society  
Scouts on Stamps Society International



PO Box 10206 • Brighton Station  
Rochester, NY 14610-0206

Bring your address label to ROPEX 2008  
for a free ticket in our *You Choose* Raffle!

To be removed from this mailing list,  
email [simpsons@frontiernet.net](mailto:simpsons@frontiernet.net) or write to the ROPEX PO box.

## Show Cancels & Cachets



### Serviced Cachet Covers Order Form

New Hampshire, U. S. Virgin Islands First Day of Issue  
Both Stamps with International Rate Stamps Cachet (Shown Above Right)

American Helvetia Philatelic Society  
One Hundredth Anniversary Washington-Franklin Series  
Scouting on Stamps Society International

Cover	Quantity	Price	Total
First Day of Issue Combo		\$4.00	
Washington-Franklin Series		\$2.00	
Scouts on Stamps Society International		\$2.00	
American Helvetia Philatelic Society		\$2.00	
Set of Three Themes		\$5.00	
Total			

Please provide a stamped, self-addressed envelope.

Please make checks payable to:  
ROPEX 2008 • Brighton Station  
P.O. Box 10206  
Rochester, NY 14610-0206

## INTERNATIONAL SOCIETY FOR JAPANESE PHILATELY



P. O. Box 1283  
Haddonfield, NJ 08033 U.S.A.  
e-mail: [isjp@isjp.org](mailto:isjp@isjp.org)  
<http://www.isjp.org>

Covers all aspects of the philately of Japan.  
Suitable for beginning and advanced  
collectors. Award-winning illustrated  
journal Japanese Philately. Journal runs  
over 200 pages annually in 8½ × 11 format.  
Monographs. Expertization services.

*Sample issue on request.*  
*Annual dues just \$16.*  
*Write for application form.*

<http://www.rpastamps.org/ropex.html>



## PlateBlockEtc

Ropex Table 10

*Offering & Buying*

*U.S. Singles, Blocks, Mini Sheets*

Opening a summer stamp shop in Canandaigua following ROPEX  
through Labor Day — Call for location, time & availability.

Cell Phone: 678-595-7827

## Dick Hall

P. O. Box 2552, Fort Myers Beach, FL 33932

e-mail [plateblocketc@yahoo.com](mailto:plateblocketc@yahoo.com)

Download price lists from —

[www.geocities.com/plateblocketc](http://www.geocities.com/plateblocketc)

& see my listings on [stampwants.com](http://stampwants.com) & [eBay.com](http://eBay.com)

## United States



Join us at ROPEX Table 15

- PRE-1940 USED
- PRE-1940 MINT
- PLATE BLOCKS
- CUT SQUARES
- REVENUES
- BACK-of-BOOK

Also Available ...

### FREE PRICE LISTS

Including All Areas of  
AUSTRIA, CANADA, DENMARK,  
GERMANY, GREAT BRITAIN,  
ICELAND, NORWAY & SWEDEN



**LAURENCE L. WINUM**

P. O. Box 247, Dept. Y  
Walden, NY 12586

APS 51900 • ARA 1970 • Est. 1964

**1-800-914-8090**

E-mail: [winum@frontiernet.net](mailto:winum@frontiernet.net)



**Dive Into  
Olympic  
Philately  
With**

## Sports Philatelists International

- ❖ Award-Winning Journal
- ❖ Quarterly Mail Auctions
- ❖ Olympic/Sport Handbooks



[www.sportstamps.org](http://www.sportstamps.org)

5310 Lindenwood Ave.  
Dept. R  
St. Louis, MO 63109, U.S.A.

**ADVENTURE  
GRAPHICS** 

*The Power of Color*



1234 Round Table, Dallas, TX 75247  
800-851-7996 • [www.adventuregraphics.com](http://www.adventuregraphics.com)

# RYUKYU ISLANDS COLLECTORS



The Ryukyu Philatelic Specialist Society, Ltd.  
fosters interest in the study, collecting and exhibiting  
of Ryukyu Islands philatelic material.



Established in 1969, the Society provides a forum  
for all philatelists with similar interests.



Membership includes the Society's quarterly journal,

## *From The Dragon's Den*

Interested parties please contact us at:

RPSS Secretary

PO Box 240177

Charlotte, NC 28224-0177

Via E-mail [secretary@ryukyustamps.org](mailto:secretary@ryukyustamps.org)

Our Web Site [www.ryukyustamps.org](http://www.ryukyustamps.org)



## Show Schedule

### Thursday, May 15

8:00 am – 6:00 pm ROPEX setup (exhibitors and dealers welcome 1:00 pm – 6:00 pm)

### Friday, May 16

9:30 am – 11:00 am “Early Bird Bourse” – \$20 entry fee for collectors and dealers  
10:15 am – 10:45 am ROPEX international rate stamps first day ceremony [Rooms 1 & 2]  
11:00 am Show opens: welcome and ribbon cutting ceremony [Show Entrance]  
11:00 am – 6:00 pm Prize drawings throughout the day  
1:00 – 2:00 pm ACE – Art Cover Exchange general meeting [Room 1]  
2:00 – 4:00 pm American Helvetia Philatelic Society show and tell [Room 1]  
6:00 pm Show closes

### Saturday, May 17

8:00 – 10:00 am American Helvetia Philatelic Society Board closed meeting [Board Room]  
10:00 am Show opens  
10:00 am – 12:00 pm American Helvetia Philatelic Society general meeting [Room 1]  
10:00 am – 5:00 pm Prize drawings and youth activities throughout the day  
10:00 am – 4:00 pm Stamp Camp USA (pre-registration required, see ROPEX website)  
11:00 am – 12:00 pm APS town meeting [Room 2]  
12:00 pm – 5:00 pm Cachetmakers’ bourse  
12:00 pm – 1:00 pm Empire State Postal History Society buy/sell/trade [Room 1]  
1:00 pm – 2:00 pm Empire State Postal History Society meeting [Room 1]  
1:00 pm – 3:00 pm Scouts on Stamps Society International general meeting [Room 2]  
1:00 pm – 2:00 pm Walk-through discussion of exhibits — all welcome [Frame 1]  
2:00 pm – 3:00 pm American Association of Philatelic Exhibitors seminar with Nancy Clark [Room 1]  
3:00 pm – 4:30 pm Judges exhibit critique [Room 1]  
4:00 pm – 4:30 pm Panorama of Swiss stamps and postal history video presentation by the AHPS [Board Room]  
5:00 pm Show closes  
6:00 pm – 6:30 pm Awards Banquet cocktails [ESL Sports Centre Restaurant]  
6:30 pm Awards Banquet dinner [ESL Sports Centre Restaurant]

### Sunday, May 18

10:00 am – 3:00 pm Prize drawings and youth activities throughout the day  
1:00 pm – 2:00 pm Federation of New York Philatelic Societies annual meeting  
3:00 pm Show closes  
3:00 pm Exhibitors’ reception and exhibit pickup

*Essential Information for Philatelists!*

# Stamp Insider

**Seeing Is Believing!**

**Bimonthly \$ 7.50 per year.**

**To subscribe or for a sample copy:**

**Federation of New York Philatelic Societies**

**1105 Union St., Schenectady, NY 12308-2805**

**[www.nystampclubs.org](http://www.nystampclubs.org)**

## Dealers

**1840–1950 Mostly Stamps** – U.S., British Empire, and worldwide stamps covers and lots

**Dave Allego** – worldwide covers, cinderellas and ephemera

**Bardo Stamps** – U.S. #1 to present

**Tom Baron Covers** – 20<sup>th</sup> century U.S. covers

**Finger Lakes International** – Switzerland, Germany stamps and covers

**France International** – worldwide thematic and topical specialties

**Geezer’s Tweezers** – U.S. and worldwide covers, FDCs, and lots

**Al Greco Stamps** – U.S. and worldwide stamps; U.S. and Canadian revenues

**Swamy Iyer** – U.S., Japan, China, Manchukuo, Ryukyus, and Asia, worldwide

**Lakewood Stamps** – U.S. and topical new issue stamps (including Disney, WWF)

**Howard R. Lutz** – worldwide collections, U.S. BOB, and British colonies

**Barry Mann** – worldwide scout philately

**NunesNook** – U.S. and worldwide covers and ephemera

**PlateBlockEtc** – U.S. stamps, plate blocks, and covers

**Les Rosen** – U.S. and worldwide FDCs and maxicards

**Rosen Dollar Tables** – stamps, covers, etc. ... everything \$1 or less

**John L. Rudnicki** – Poland back of the book and collections, topicals including Europa

**Suburban Stamp and Coin** – U.S. and worldwide stamps; U.S. coins

**Robert C. Swed** – U.S. used stamps and covers; classic FDCs

**Tom’s Stamps** – Classic U.S. mint/used and worldwide stamps, lots

**Al “Doc” Turner** – Classic U.S., British North America, and Scandinavia

**S. J. Willis Stamps** – U.S. and foreign stamps, especially pre-1960

**Laurence L. Winum** – U.S. and Germany stamps and covers

**Fred Zaganiacz Stamps** – worldwide stamps and covers, U.S. covers, topicals



## Cachetmakers

**Armstrong Cachets** – hand-drawn cachets

**CL Cachets** – award-winning, single-color cachets, including ROPEX 2008 FDOIs

**3-DLAZ Cachets** – limited edition handmade 3D cachets



## You Choose Raffle

- King-size hand-crocheted hour glass afghan (by **Karen Barber**)
- \$50 gift certificate from **Wegman’s**
- \$50 gift certificate from **Furnal’s Hilton Big M**
- \$25 gift certificate from **Four Seasons Spirits and Wine Cellars of Ridge Road**
- \$30 gift certificate from **TGI Friday’s of Henrietta**
- \$25 gift certificate from **Jay’s Diner**
- \$25 gift certificate from **CarMestro’s Restaurant**
- \$50 gift certificate for two tickets to any performance from **Blackfriars**
- \$25 gift certificate from **Brenda’s Professional Hairdresser**
- 40 pound bag of dog food from **Country Max of Henrietta**
- **Anonymous RPA donations**
  - Imperforate pair of 26¢ Florida panther stamp, Scott No. 4141 (est. \$200 – \$300)
  - 2006 Faroe Islands year pack (\$55 value)
  - 2007 Faroe Islands year pack (\$59 value)
  - 1973 & 1990 U.S. postal card catalogues, 2 photo albums with some ROPEX covers, 1 wicker basket, 2 sets small candle holders, 2 large candle holders