



The success of your club's newsletter is dependent in part on what is submitted for publication. Please, if you have something to share send it to the editor. We are always looking for positive input, so why don't you drop me a line today!



Chapter #207 (19273) American Philatelic Society
Chapter # 69 American First Day Cover Society
Chapter #84 American Topical Association

[Http://now.at/rpa/](http://now.at/rpa/)
Check out the RPA Home Page

PROGRAMS

The November 8 and December 13 will feature APS slide presentations.

There will NOT be any other meetings during these months. See the President's Message

ROPEX Chairperson Ray Stone will be updating new show info at the RPA Meetings. The membership is encouraged to volunteer services to ROPEX and/or even present an original evening program (SLIDE-TALK) of about 25 minutes....Please help us out to present interesting programs.....

John Kellas III
RPA President

We meet on the second Thursday and fourth Wednesday of most months between September and June. Our headquarters are in the Eisenhart Auditorium, behind the Main Museum building, on East Avenue. A buy/sell/trade session runs from 7:10-7:45 PM, followed by the formal meeting at 7:45 PM. A silent auction concludes most evening's program.

Hinges & Tongs

ROCHESTER PHILATELIC
ASSOCIATION, INC.

P.O. Box 10206
BRIGHTON STATION,
ROCHESTER, N Y 14610-0206
November-December 2001
Editor: JOHN A. CALI
E-mail rocket@dreamscape.com

RPA Reporter: FLORENCE WRIGHT
E-mail FHW-33@worldnet.att.net

PRESIDENT'S MESSAGE

The two October RPA Meetings took place at the RPA's new meeting location at the Rochester Museum & Science Center, the Eisenhart Auditorium basement. Both meetings were well attended by the membership. PLEASE NOTE...this marks a big change for the RPA, we now meet on the second Thursday and fourth Wednesday of each month, except only one meeting in November and December (the second Thursday) and no meetings in July & August. The RPA Meetings use the Gannett School Entrance which opens around 7:10 PM with the program starting at 7:45 PM. The RPA meeting ends by 10:00 PM. The Rochester Museum & Science Center is located off East Ave. & Goodman Street. There is some construction on campus through November and car entrance to the Parking Lots can be done using the Planetarium Entrance from East Ave. The Museum is making improvements to the three parking lots and increasing the lighting. There are parking spaces located in front of the Eisenhart/Gannett School about 75' from the Entrance Doors...

Please note the Enclosed Map of the RMS and Eisenhart Auditorium Layout.

The NEXT BIG PROJECT will be moving the RPA Library to the Eisenhart RPA Meeting Location. The entire RPA Library will now be located only 15 feet from our Meeting room. We will have to purchase the two storage cabinets and move two cabinets from St. Paul's in order to protect the club records & Library. One thought was to organize the MOVE during one of the upcoming Meetings by having the membership first stop at St. Paul's Church and everyone help pick up RPA records & library books. Look to the RPA WEB SITE FOR more on this plan. JK3

Current RPA Officers 2001-2002

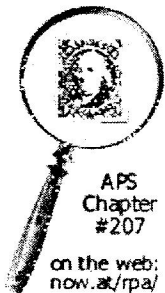
President — John Kellas III
Vice President — Mark Hull
Treasurer — George Fekete
Corresponding Secretary — John Cali
Recording Secretary — Jim Piecuch
Immediate Past President — Ed Kawasaki

Board of Governors

Norm Wright (term expires June 30, 2002)
Chuck Shultz (term expires June 30, 2003)
Joe Doles (term expires June 30, 2004)

Membership Chair — Florence Wright
Librarian — Joe Doles

Pictorial cancellations for November and December are listed here. These cancels can be obtained for 30 days. They are destroyed after that time.



**Celebrate Stamp
Collecting Month
Station- 2001**

Rochester Philatelic
Association Open House
at the Rochester Museum
and Science Center

**October 24
Rochester, NY 14607**



**"Peacekeepers of the
New Millennium..."
November 12, 2001
Peacekeeper Station
Rochester, NY 14692**

Editor's Observations

Well, it is definite, RPA has a new meeting place. Response to a new meeting location is frequently varied. If the move is after only a couple of years, then then the situation of another move may not seem too unusual. However, if it occurs after many years in a given location, then there are sure to be moans and groans. People become acclimated to a given location.

This new move of ours is suffering from this. Add to that construction and the winter and you have instant apprehension that something will definitely go wrong.

I found this out when the federation had to move its meetings of 10 plus years. It was unbelievable. Delegates began to notice the things they took for granted. Now, the location is not known for any great length of time. It is hoped, that as with anything else, members will become used to being moved from one place to another.

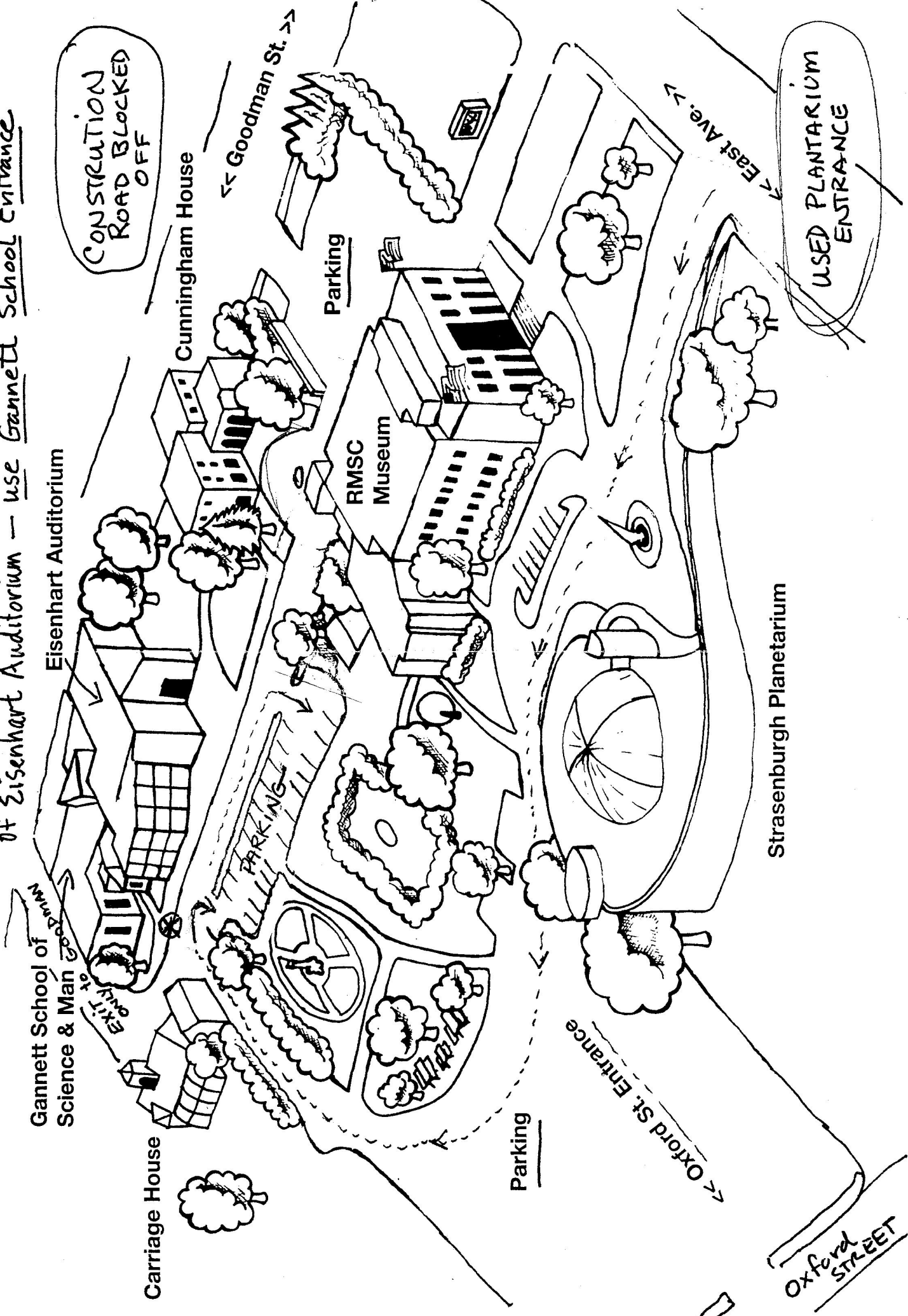
The R. S. Stamp Company, also known as Bob and Elli Steeb, are having their show, Sunday, November 4.

They have indicated that ordered supplies are available. Do give them a call with your order so that you will not have to wait.

Deadline for the January-February issue of

Hinges and Tongs is December 15

⊕ RPA meets in Basement of Eisenhart Auditorium — use Gannett School Entrance



CONSTRUCTION ROAD BLOCKED OFF

USED PLANTARIUM ENTRANCE

Eisenhart Auditorium

Cunningham House

Parking

RMSC Museum

Strassenburgh Planetarium

Goodman St. >>

East Ave. >>

Oxford St. Entrance

Parking

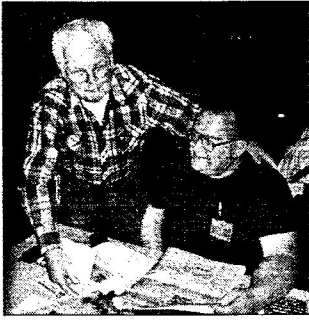
Oxford STREET

Gannett School of Science & Man Goodman

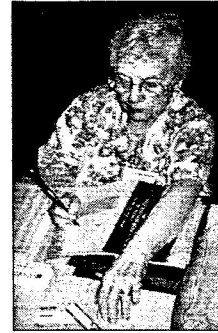
Carriage House

EXIT to Goodman

PARKING



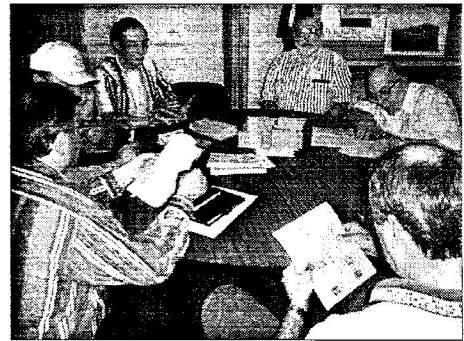
Rick, this is a.....



Florence catching up



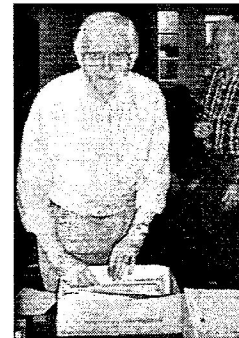
Silence is golden!



Okay, what material are space fillers?



Dusty is surprised while Ada searches



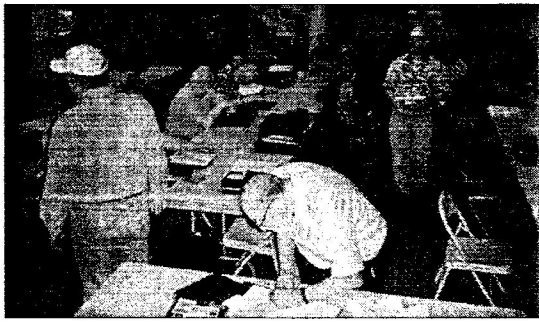
George and material



More reading material for Joe



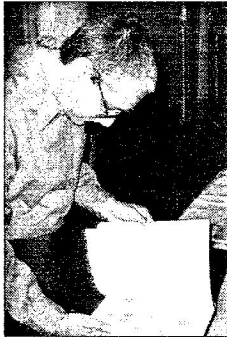
Members taking a break



Ray's last minute bid



Progress on a winning auction



Anyone for judging



Presidential dictum



George and circuititis



VP Mark Hull very pleased



Enjoying a little



Waiting for refreshments

Local & Regional Calendar of Stamp Shows

Information provided here is for the benefit of collectors and dealers alike within the territories of the former Niagara Frontier Federation of Stamp Clubs and the Federation of Central New York Philatelic Societies. Additions and/or corrections are welcome by e-mail at stampmf@frontiernet.net or by phone at (716)621-1670. Locations are color coded by regions as follows:

Buffalo Rochester Syracuse Albany Canada

2001 Listings

Nov 10-11 Syracuse SYRAPEX'01

Sponsored by the Syracuse Stamp Club. Holiday Inn- Carrier Circle, exit 35. Hours: Sat. 10-6, Sun. 10-4. Dealers, exhibits, US Postal Service, show cancel and cacheted envelopes.

Email: agsses@aol.com

Nov 17-18 Albany/Latham Capital District Stamp Show

Quality Inn, I-90 and Everett Rd, Exit 5 towards Route 5. Hours: 10-4, 10-4. Bourse. Contact: (518)399-8395. Email: nunesnook@aol.com

Nov 18 Cheektowaga Erie County Coin, Stamp, Currency Show

FJ Donovan Post, 3210 Genesee, Street. Hours: 11-5. Bourse. Contact: (716)633-4104

Nov 24-25 Cheektowaga CHECOPEX'01

Sponsored by the Cheektowaga Stamp Club. Buffalo Consistory, 2379 Union Road. Hours: Sat. 10-5, Sun. 10-4. Dealers, US Postal Service, souvenir cancel and cacheted envelopes.

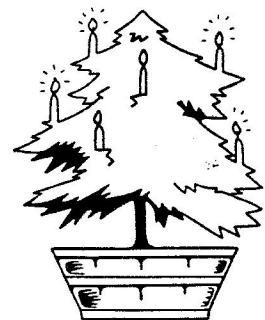
Dec 17 Cheektowaga Erie County Coin, Stamp, Currency Show

FJ Donovan Post, 3210 Genesee, Street. Hours: 11-5. Bourse. Contact: (716)633-4104



*From all of us
to all of you!*

*Have a happy
and safe
Holiday Season!*



Hinges & Tongs

Rochester Philatelic Association, Inc.

P.O. Box 10206, Brighton Station
Rochester, N.Y. 14610-0206



Articles may be submitted to:
John A. Cali, editor
613 W. Fourth Street
Fulton, N.Y. 13069-3104

THOMAS FORTUNATO 9205
42 MAYNARD STREET
ROCHESTER NY 14615-2022