

# HINGES and TONGS

an RPA newsletter

Rochester Philatelic Association, Inc.  
FOUNDED 1913      Sept/Oct 1992

Meetings held the second and fourth Thursdays, Sept. through June, at St. Pauls' Episcopal Church, East Ave. at Vick Park B. Starts at 8pm.

## Silent Auctions

As a part of each meetings program a silent auction is held. The way it works is each member is allowed to bring in up to seven lots of philatelic items. Any amount of donation lots is appreciated. Each lot should have an auction sheet (available at the meetings) with the owners name and minimum bid, if any. The lots are laid out for inspection and bids are recorded on the sheets. At a designated time the bidding is closed and the winners are asked to settle up with the owners.

You may take some blank auction sheets home to have lots ready for the next meeting.

Silent auctions are not held on meeting nights that a live auction is held. Advanced notice is always given for live auction. See schedule.

## WELCOME

Welcome to another year of stamp collecting fun!

Norm Wright has put together an interesting program package for us with some new ideas. We hope we have something for everyone.

It was decided to discontinue Exhibiting Seminars for this year with the possibility of resuming next year if there is enough interest.

Your comments are always welcome!

Expect to see you September 10th, first meeting.

Bernice Watson  
President

## '92-93 Board of Governors

### PRESIDENT

*Bernice R. Watson*

### VICE PRESIDENT

*Norman E. Wright, Sr.*

### RECORDING SECRETARY

*Michael H. Fader*

### CORRESPONDING SECRETARY

*Joseph K. Doles*

### TREASURER

*James M. Trenton*

### IMMEDIATE PAST PRESIDENT

*Lawrence R. Moriarty*

### GOVERNORS-AT-LARGE

*Paul R. Gerwitz*

*Richard A. Kase*

*Betty V. (Dusty) Miller*

## YOUR INVITED

The Kodak Stamp Club meets the fourth Tuesday of each month in the employees activities building at Kodak Park. Building 28 at the corner of West Ridge Rd. and Palm Street has a sign Theater on the Ridge over the front entrance. The doors open at 7:30 pm for trading and buying. A silent auction is a part of every monthly meeting as are guest speakers and APS slide shows. A few member dealers are at each meeting. All RPA members are welcome guests at any Kodak Stamp Club meeting. Many Kodak members are also RPA members. We meet in room 113 just off the lobby. Hope to see you soon!

SOUVENIR PAGES-- A TOPICAL COLLECTION OF OUR TIME by George Hill RPA#9202

New to stamp collecting and eager to set a pace to catch up with collectors who have had years to accumulate collections both unique and interesting, I had to choose a definable area and begin. At first everything looked great and energy was expended getting this and that. We all, at one time or another, have fallen into the trap of possession without planned purpose.

On investigation of possibilities, the exponential thoughts of what to collect and how, were mind boggling. Many friendly collectors were willing to discuss their specialties and help me "get started". So many, that their help added to the confusion of what to collect. Everyone has faced this problem and each successful collector arrived at a solution to limit themselves before purse and family made collecting an impossibility.

Limit was the key word. Define an area that was within grasp and decide on a TOPIC OF OUR TIME. Something that is affordable as well as definable and a topic interesting enough to warrant the time it would take to carve out a notch of postal history. Something that was readily available in sufficient quantities that possession did not come at too high a price.

The first decision was to collect U.S. Postage. The second decision was to record first day of issue. The third was to accumulate some postal history. The USPS was already doing everything required in my definition and...as an added incentive...what I wanted to collect was possible and the time frame rather short to COMPLETE obtaining "back issues". The topic, SOUVENIR PAGES, had a start date for official issues of 1972.

Ho-hum, yawn...say the uninformed when approached with "yet another area of collecting". Take another look. There are few areas of stamp collecting that completion is so affordable from the standpoint of time and money. The time element...1972 onward is truly a TOPIC OF OUR TIME and this area is so underrated by the "professionals" that the cost to get a respectable collection together is minimal. Keeping current is easy...just a subscription and the service by USPS is guaranteed. All your time can be spent getting the back issues, which for the most part, are readily available.

Now comes the fun part. Many dealers in the area get odds and ends of these SOUVENIR PAGES when they buy collections and, lacking real interest themselves, undervalue the collectable. This is your chance to hunt the dealer bins and put together a topic that you can be proud to own and bequeath. A segment in USPS history which can be completed in our time.

The number of dealers even mentioning SOUVENIR PAGES in their ads is so few, that I'll list them here to save you the trouble of looking them up:

Charles Simmons  
Box 6238  
Buena Park, CA  
90622-6238

Larry Nally  
104 Marie Dr.  
Pittsburgh, PA  
15327

Stamp Professor  
1500LPP East 79th  
Bloomington, MN  
55425

Jim Mc Donald  
399 Cardinal Rd.  
Hackettstown, NJ  
07840

Gerald Blankenship  
539 North Gum Gully  
Crosby, Texas  
77532

Most pages can be obtained at a reasonable rate, anywhere from fifty cents to \$6, some higher. The serious collector can more than dream and buy the few rare ones at astronomical prices (As listed in USPS Postal Service Guide to U. S. Stamps). For the most of us, we can be content to collect the major issues not the errors.

I'll look at SIG's (Special Interest Groups) next issue and answer inquiries if any come along. In the meantime, make your presence known so we can get a good discussion and trading going.

# ROCHESTER PHILATELIC ASSOCIATION

## 1992-1993 PROGRAM SCHEDULE

(Subject to revision, with notice when possible)

Sept. 10, 1992: First fall meeting -- "Show & Tell" Come prepared to let us see and hear about your philatelic adventures during the summer. Also, Silent Auction.

Sept. 24, 1992: APS Slide Show, "Swedish Postal History." Also, Silent Auction.

Oct. 8, 1992: Christopher Columbus "Discovers" Rochester: One-page exhibit competition on Columbus and/or Exploration and Discovery theme; special request for Columbus material for the Silent Auction.

Oct. 22, 1992: APS Guatamala Slide Show as created by Warren Stevens. Also, Silent Auction.

Nov. 12, 1992: Members' Bourse - No Silent Auction (Florence Wright, bourse chairperson).

Nov. 26, 1992: Thanksgiving - no meeting.

Dec. 10, 1992: Christmas Philatelic Gift Exchange (those who bring some take some).  
Also, Silent Auction.

Dec. 24, 1992: Christmas Eve - no meeting.

Jan. 14, 1993: Live auction -- More great items from the Warren Stevens holdings.

Jan. 28, 1993: Railroad Night -- APS Slide Show: "Canadian Postal History as used by the Central Pacific Railway." Also, Silent Auction.

Feb. 11, 1993: Annual one-frame competition -- win the chance to exhibit at ROPEX '93.  
Also, Silent Auction.

Feb. 25, 1993: APS Slide Show: "French Balloon Posts." Also, Silent Auction.

March 11, 1993: ROPEX preparation night and Silent Auction. RPA 80th birthday party.

March 25, 1993: ROPEX set-up at the Downtown Holiday Inn.

April 8, 1993: "A Philatelic Thesaurus" led by Florence Wright. Also, Silent Auction.

April 22, 1993: No meeting (church unavailable).

May 13, 1993: Guest Speaker - to be announced. Also, Silent Auction.

May 27, 1993: APS Slide Show: "Rotary International on Stamps." Also, Silent Auction.

June 10, 1993: Annual Meeting and election of officers. Also, Silent Auction.

June 24, 1993: Strawberries, Silent Auction and Kiloware.

Annual RPA banquet and auction in June, Date and place to be announced.

**ROCHESTER PHILATELIC ASSOCIATION, INC.  
ROPEX 1992 TREASURER'S REPORT**

**INCOME**

Dealers Bourse	\$10,975.00
Exhibits includes \$191.90 return postag	1,719.90
Sales: Covers & Show Cards	1,622.87
Advertising in program	805.00
Donations	238.05
Refunds	487.80
Interest on checking accounts	120.10
Banquet	1,365.00
Sub Total	<u>\$17,333.72</u>
Starting Bal.	1,219.55
<b>TOTAL</b>	<u><b>\$18,553.27</b></u>

**EXPENSES**

Publicity - Advertising	\$ 3,343.96
Stamp Insider	\$230.00
Linn's	935.00
Suburban News	14.00
Golden Times	40.00
Gates-Chili News	41.76
Gannett Papers	89.53 classified ad
"	1343.31 display ad
Stamps Magazine	284.55
Catholic Courier	78.12
news releases	44.01
photography	29.90
post cards	137.98
misc. ink, flyers	75.80

**EXPENSES (cont'd)**

Exhibits/Prospectus	\$188.90
Postage - return copies & other mailings	90.40
Dealer's bourse	148.30
Sales: cachet covers and card	50.00
751.97	
Express Press	338.94
postage for servicing	362.50
Souvenir Card Society	20.00
envelopes	23.71
mailed orders	6.82
Judging	1027.25
Holiday Inn	
4500.00	
Awards	
Refreshments	190.97
returned to RPA	\$90.00
dealer's	\$455.52
782.86	
Telephone calls	
Staging	96.70
first aid kit	\$11.17
1138.54	
Program	227.74
Banquet	1466.27
Security	738.00
Refunds	337.30
Grand Award Winner	72.00
APS Champion of Champions frame coverage	
Letters, copies and other postage	38.07

TOTAL EXPENSES	\$ 15,399.62
Turned over to RPA	1,853.65

Bookkeeping and office supplies 260.38

Checking balance and petty cash	1,300.00
Total accounted for	<u>\$ 18,553.27</u>

## Philately by Shortwave

Jim Trenton RPA#7609

As an avid shortwave radio listener I have run across several programs on stamp collecting. I would like to share that information with you.

The first station is Radio Sweden International, 11705 KHZ and 9675 KHZ. Programming runs from 10:00pm to 10:30pm. the first Sunday each month. The Stamp Corner, as the program is called, has a monthly contest were you send in answers on a post card to a series of questions asked on the air. Winners are drawn from cards with the correct answers and your name is read over the air. Philatelic items are then sent to those chosen.

Radio Habana has the World of Philately every Saturday night from 8:30 to 9:00 pm. That frequency is 11950 KHZ.

All times are Eastern Daylight Savings..... Happy listening!



Does this remind you of the "Official ROPEX Smoocher? aka Larry Moriarty

## First Day Covers

The RPA produces FDC's to help support the keeping and care of our exhibition frames. So far we have not had to draw from the general fund for any of these expenses. The frame committee appreciates your support.

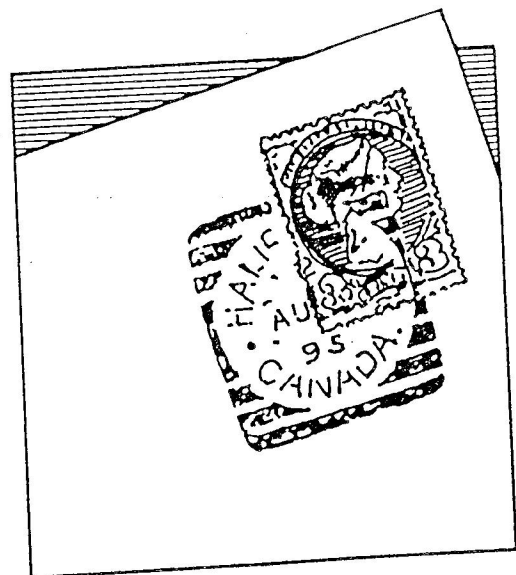
**DOROTHY PARKER** Aug. 22, West End, N.J. Cachet shows Parker. \$1.75/each, plus #10 SASE. Rochester Philatelic Assn., Box 10206/DPSC, Rochester, NY 14610-0206. (5026)

**DOROTHY PARKER** Aug. 22, West

**THEODORE VON KARMAN** Aug. 31, Washington, D.C. Cachet honors Von Karman and his work in rockets and suspension bridges. Franked with single, with combos (Sc. #976, C69) or a suspension bridge stamp. \$1.75/single (\$2/#976 combo, \$2.50/#C69 combo, \$2.25/suspension bridge), plus #10 SASE. Rochester Philatelic Assn., Box 10206/VKSC, Rochester, NY 14610 0206. (5028)

**Sept. 8** Correction  
First-day cover for the 29¢ Pledge of Allegiance stamp honors Francis Bellamy and Pledge of Allegiance. \$1.75 each with Rome, N.Y., cancel; \$2.50 each with unofficial Mount Morris, N.Y., cancel, birthplace of Bellamy; or \$2 for combo with 48-Star Flag stamp (Scott 1904) and Rome, N.Y., cancel. Rochester Philatelic Association, Box 10206/FBL, Brighton Station, Rochester, NY 14610-0206. SASE required.

**Sept. 17** Minerals  
First-day cover for the 29¢ Minerals stamp depicts a contact goniometer, an instrument that measures angles between crystal faces, and text that explains it. \$2.50 for a block of four; or \$2 for combo single with single from 1974 Mineral Heritage issue. Rochester Philatelic Association, Box 10206/MINL, Brighton Station, Rochester, NY 14610-0206. SASE required.



A squared circle is made up of a circular datestamp set in a squared off arrangement of lines or bars. This device has been used by many countries, including Canada.

## Philatelic "Find" Whitney D. McMahon RPA#8910

During Easter vacation in April of this year my wife Cathy, son Mike and I went to the Corning Area for a couple of days. Besides going to the Corning Glass Museum, one of the things we wanted to do was go to the National Soaring Museum located about midway between Elmira and Corning.

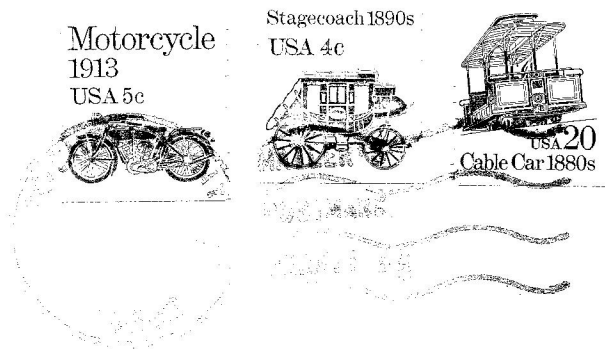
Once we arrived there we proceeded to check out the sail planes (also known as gliders) both old and new. There was even a fuselage from a glider like the Army flew during World War II. I enjoyed this very much since my cousin flew one in Normandy on D Day.

However my favorite item in the museum was the philatelic material. There was an exhibit that would do justice to any stamp show. There were both covers and stamps, together with a very interesting history of soaring. I wasn't able to find out if it had ever been in competition, but if it was I am sure it was a prize winner. In addition to this was a collection of mint stamps (soaring related) from many countries, four post office cancellation die hubs, and many covers. There was also a large picture donated by the U.S. Postal Service of the 28¢ air mail postal card (Scot UXC20) showing three gliders in a cloud filled sky.

Going to the National Soaring Museum was a real treat, but finding some very interesting philatelic material was a real unexpected and pleasant surprise.

By the way, we stayed overnight in Avoca, NY at a rather interesting motel. The Goodrich Center Motel has many standard rooms, plus five cabooses set up as motel rooms. Members of the RPA that know me know I collect railroad related stamps, so no one need ask what type of room we slept in....but that's another story.

Rochester Philatelic Association, Inc.  
P.O. Box 10206, Brighton Station  
Rochester, New York 14610-0206



**FIRST CLASS MAIL**

Typed articles may be submitted by the  
25th to the editor:

Joseph K. Doles  
34 Carlisle Street  
Rochester, NY 14615-2043

9205  
THOMAS M FORTUNATO  
42 MAYNARD STREET  
ROCHESTER NY 14615

*The RPA is a chapter member of the APS and the AFDCS*