

# HINGES and TONGS

an RPA newsletter

Rochester Philatelic Association, Inc.

FOUNDED 1913

Jan. / Feb. 1992

Meetings held the second and fourth Thursdays, Sept. through June at St. Pauls' Episcopal Church, East Ave. at Vick Park B. Starts at 8pm.

## SWL

For  
Short Wave Listeners

A few radio programs are available to the short wave radio listener on a regular basis. These broadcasts have interesting stories on stamps and some have competitions that you can send in your answers and they have a drawing from the correct responses. Jim Trenton and Ray Stone have both won prizes. Times and frequencies are:

**Radio Sweden** 1st Sunday of the month at 8 & 9pm Eastern time at 11705 and 9695 kilohertz.

**Radio Havana** every Saturday at 11:40pm Eastern time at 11920 Kilohertz on your dial.

For more information on these programs and short wave broadcasts in general contact Jim Trenton.

## FYI

**For Your Information**

Ada Prill has been appointed Western Coordinator for the Empire State Postal History Society.

## SMOKING

**Smoking Policy Stated**

At the December 18th board meeting it was decided that a firm stand should be taken on the question of smoking during RPA functions.

Regular meetings are already non-smoking as requested by the church and mandated by county law.

Because rooms used for banquets are relatively small, not allowing for smoking and non-smoking seating, a policy of no smoking at both ROPEX and RPA annual banquets has been established.

Where a non-smoking policy is not enforced please be considerate of those folks who may be offended by the smoke.

This policy change is an attempt of the Board to move in the direction of a total ban on smoking during public events which seems to be what the general public is striving for.

We hope that all concerned will find this policy acceptable.

# A MEMORY

by  
James M. Trenton

The many insights into subjects only discussed during short drives home from RPA meetings; the short conversations while walking down the church hall or stairs; my education on the workings of hospital equipment, so that life's little undertakings can still be enjoyed; our many fun filled picnics at Canandaigua Lake with other RPA members; cold winter drives to meetings that do not end at St. Paul's Episcopal Church, but at the main Rochester Public Library, after a three block walk in one foot deep snows; a milking stool for entrances and exits into a Chevy Blazer; the helping hand in preparing the refreshment table; and sitting at ROPEX hospitality tables; or the small ROPEX projects worked on; the entertaining programs of meetings past; or the Christmas party elf standing in for Santa; and yes, the little things that Grandmothers are known for; are just some of the experiences that Helen M. DelSolar and I enjoyed doing together over the years. She will be missed.

## SERVICE

December 1, 1991 Mrs. Helen DelSolar passed away. A memorial service will be held on Feb. 8, 1992, at 2pm, at the Little Chapel of the Episcopal Home, 505 Mt. Hope Avenue, Rochester, N.Y.

# NEW MEMBERS

1991 was a good year for new members to the RPA. A total of twelve. All are from Rochester unless indicated otherwise:

- #9101 Dale Rhode, Fishers, NY
  - #9102 Motya Shteyn
  - #9103 Norman E. Wright
  - #9104 Florence H. Wright
  - #9105 George T. Zakrzewski
  - #9106 Son Xuan Nguyen, Fairport
  - #9107 James P. Curry
  - #9108 Robert Hiler, Phelps, NY
  - #9109 David Phillips
  - #9110 Paul J. Brach
  - #9111 Alice J. Johnson
  - #9112 Carl R. Miller, Jr.
- Please welcome all to the RPA.

**REMEMBER-** in an attempt to build the RPA membership the club requests that all members go out and let all their collecting friends know about the RPA and it's benefits of belonging. **Bring in two new members and you receive one years free dues. More than two new members in any given year will give you credit towards future dues in the RPA.**

## AUCTION

### December Auction Update

The Warren Stevens auction held Dec. 12 was a gigantic success. Sixty one lots were offered and all were sold. \$503 dollars were realized (10% for the club treasury). Another auction will be held early in 1992.

## AUCTION II

### Change in Rules

The number of lots that a member can submit for live and silent auctions has been increased to a total of seven (7) lots. Any number of donation lots may be submitted to go into the clubs' treasury. Remember the seller pays 10% to the club treasury for lots sold during live auctions.

It was felt by the RPA Board that a few more lots would give members a larger selection to bid on.

## CLUB LIBRARY

We have a very good club library at our meeting place and very few people take advantage of it. Last years' Scott catalogs can be borrowed between meetings. The most recent Scott's must remain in the library. Replacement value will be charged for any lost books. Some of these books can only be replaced through auctions.

We are in the process of making a mobile bookcase so that the Library can be rolled out onto the stage. Until then the books will be found in the closet on the stage. Books must be checked out with the club librarian, Joe Doles or any club officer in his absence.

## KSC

### KODAK STAMP CLUB

The KSC meets the 4th Tuesdays at 7:30pm in room 113 in Bldg.28 on Ridge Rd. West at Palm Street. **All welcome.**

**Jan.28** APS slide show Plate Number Coils.

**Feb.25** APS slide show The APS Story.

**MAR.24** APS slide show American Revolution Bicentennial Stamps & Cachets on International FDC's.

## RPA PROGRAMS

### January 9

Bob & Ellie speaking on Merchandizing and Auctions, an open discussion is requested.

### January 23

ATA slide show Turberculosis  
**LIVE AUCTION** up to 7 lots each

### February 13

Open program, silent auctions at all meetings except the nights that have a live auction scheduled.

### February 27

An APS Slide Show  
The APS STORY

## SEMINARS

### ON GOING EXHIBTORS SEMINARS

### January 9

APS Judging critera vs local shows

### January 23

ATA Judging criteria vs local shows

### February 13

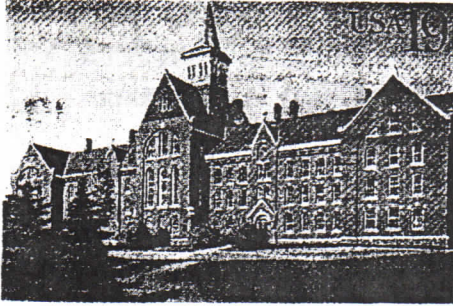
Youth Exhibits

### February 27

Summary - one frame exhibits, 8 pages

**These seminars are held at 7:00pm in the regular meeting place and last approx. 45 minutes. It is the hope of the education committee that these programs will encourage new exhibitors to enter the ROPEX one frame competition on March 12th.**

## The Old Mill First Day With Rick and Chuck by Chuck Schultz



The Old Mill 19¢ Postal Card honoring the bicentennial of the founding of the University of Vermont was issued Oct. 29, 1991. Since it didn't look to far away on the map we decided to go.

The trip was a little over 300 miles. It was made especially interesting after we stopped at Amsterdam for breakfast and had hit chili. We stopped at two post offices for cancels on the way to Gansevoirt, NY and Charlotte, VT. The Charlotte Postmaster gave us hand cranked machine and hand stamped cancels.

We arrived at the University in the afternoon. This was the third University Rick and I have been to for a First Day Ceremony. We toured the campus getting invitations to the ceremony and information and where the ceremony was to be held the next day. The students and staff at the University book store were the most helpful. We even toured the "Old Mill". Which was said to be the largest building in Vermont in 1846. It's currently being used for classrooms and offices for faculty and student organizations. The many colorful painted fast food trucks parked outside of it made for an interesting contrast of the old with the new.

Do stamp collectors go to the motel and enjoy the pool for the evening before a First Day Ceremony? No! The Plattsburgh Stamp Club was meeting on the other side of Lake Champlain that evening. So we decided to go. But going to this meeting is not like going to an RPA meeting. We had to take the ferry from outside Burlington, VT to Plattsburgh, NY. Be sure to ask Rick about the ride and "Chomp" the Lake Monster.

The Plattsburgh meeting had sixteen collectors in attendance. Some people came over 50 miles regularly to the meetings. We met one person will be exhibiting at X 92. Ha! ROPEX 92 flyers were given out. The trip back allowed us to see a clear view of the "Northern Lights". It was a little

evil knowing that "Chomp" might be out there.

The First Day Ceremony was at 11am in the University Recital Hall. The Post Office opened at 8am so we so we were there getting the postal card and FDOI cancels. All the postal people were very helpful. An interesting fact about Burlington is that it's the largest city in Vermont with a population of only 38,000. As usual Rick was getting cancels on everything; invitations, college notebooks and postal cards. This was a little more difficult since it was a postal card.

I worked on combos; stamps added to the postal card that go along with the University and Vermont theme. While in the post office I learned that John Dewey (30¢) was the only University of Vermont graduate to be on a stamp. So after a little hustling I was able to get several stamps and made Dewy/Old Mill combo's.

The ceremony went well. The post office had many people to sell the postal cards and Old Mill t-shirts. Lines were short for FDOI canceling. One of the postal workers, Mary Ann Lafayette wis a distant relative to Lafayette who laid the corner stone for the Old Mill when it was built.

There were 300-400 people in attendance. Speakers were from the University and the Post Office. The Champlain school 5th grade chorus was the highlight of the ceremony. We met several members of the American Ceremony Program Society who came from Long Island, NY and Virginia for the ceremony. While in line for autographs I met a professor from the University who had graduated from the University of Rochester.

After the ceremony we set out to get unofficial First Day Cancels on the way home, Stopping to Burlington, Winooski (where the bricks came from for the Old Mill) and South Hers, VT. Then the ferry to New York for unofficials in Cadyville, Redford and finally Vermontville, NY. Vermaontville located in the Adirondocks had just got there own separate Post Office building. The Postmaster knew everyone who came into the Post Office.

All in all a good time. Lots of postal cards and First Day cancels. I'd recommend attending a First Day of Issue to any stamp collector. It gives you a sense of history and a personal feel for the stamp being issued. Also if you have a need. Also if you need directions around Burlington, VT let us know!  
..... Chuck Schultz

Nobody has said it as well as John M. Hotchner in his November 9, 1991 column in Stamp Collector, a Van Dahl publication. Reprinted below.

# Exposing the myth of 'cliques': most clubs are led by activists

One of the enduring myths of stamp club leadership is that there is a small inner circle of people who run everything and don't welcome new faces to their midst.

The fact is that there is always an identifiable group of people who do the work to keep the club going, but calling the group a clique is usually wrong.

An active group respects effort. If you join in and make a contribution, you'll be part of that group faster than you can say "Jack Spratt." Then you're in a good position to press your ideas.

If, on the other hand, you stand up in meetings and critique what the workers are doing — or worse, you do this behind their backs — you should not be surprised if the reaction is to shut you out.

This group is not a closed clique, but you must earn your way into it the same way they did — by working for the club. Working your jaws isn't enough.

A recent commentary by Rhode Island Philatelic Society member Ray Gaillaguet, in the RIPS newsletter, illustrates this point well and I recommend it for reprints in your club newsletter:

"Every once in a while, someone states, 'This organization is run by a clique.' I have been associated with elected groups in professional, fraternal and labor organizations, and have often heard this recurring accusation about leadership.

"As to the Rhode Island



## Stamp Club Idea Trading Post

JOHN M. HOTCHNER

Philatelic Society, why would anyone wish to become part of a 'clique'? The only thing one gets by being an officer, head of a committee or member of the executive board is a lot of work and not one perk!

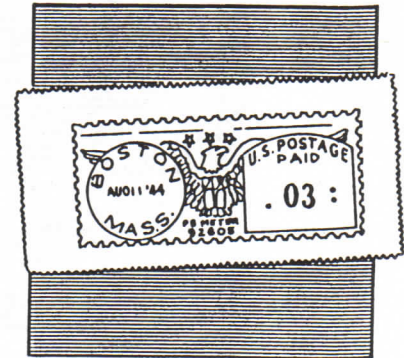
"My personal feeling is that accusing the officers of being part of a clique is a cop-out. Ask yourselves, 'What have I ever personally done to become active in the society? Have I ever volunteered to help out physically at RIPEX? (Setting up and dismantling frames and tables, sitting at the desk for a couple of hours on the two days, etc.) Have I ever shown my collection at RIPEX? Have I ever given a talk to the group? Have I ever attended any affairs such as

the various dinners or trips, or volunteered to chair one of these affairs, etc.?' For months the society needed a librarian; did you volunteer?

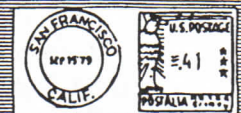
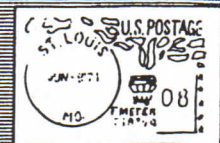
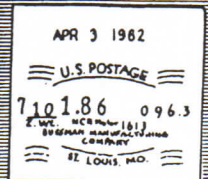
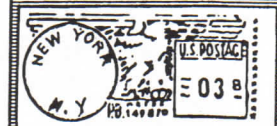
"The attitude of some of the members that the officers should make it their duty to meet the members and talk to them individually is difficult to explain. Would it not be much easier if members came and introduced themselves? I, for one, am always happy to answer a member's philatelic question to the best of my ability, but I simply do not have the time to go around to ask each individual if he or she has a question.

"If you wish to become part of this 'clique,' nothing could be easier! Become active! The treasurer's job will be open in January as will at least two other officers' slots. Assistants would be valuable to the chairmen of RIPEX, the auctions, the dinners, the clambake, and the librarian. Become active, volunteer for any activity in which you are interested."

ROCHESTER DEMOCRAT AND CHRONICLE  
Wednesday, May 22, 1957



Postage meter: a legal substitute for adhesive postage stamps. Applied by machines, meters are used under postal regulations by businesses and large groups.



Meters include letters identifying machine manufacturers: PB for Pitney Bowes; NCR, National Cash Register; F or S, Friden; T-N or Postalia, Postalia; and H, Hasler.



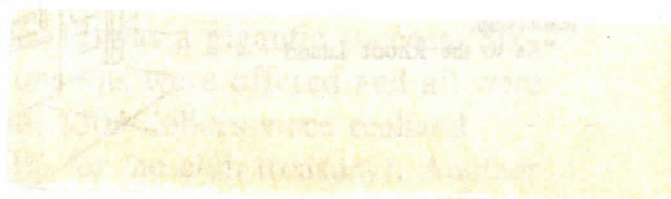
The Executive Board of the  
Rochester Philatelic Association  
Sends wishes for a Happy New Year.

ROCHESTER PHILATELIC ASSOCIATION, INC.  
P.O. BOX 10206, BRIGHTON STATION  
ROCHESTER, NEW YORK 14610-0206



**FIRST CLASS MAIL**

Typed articles may be submitted  
by the 25th to the editor:  
**Joseph K. Doles**  
34 Carlisle Street  
Rochester, New York 14615-2043



The RPA is a chapter member of the APS and the AFDCS