

NEW YORK WHEEL OF FORTUNE CANCELLATIONS

By: Larry Rausch

This article details those towns in the state of New York that I have identified that used the Wheel of Fortune cancel.

In the November 2005 U.S. Cancellation Club News issue, Arthur Beane announced a project to produce a monograph on the Wheel of Fortune cancels. I've taken up the task to complete this monograph.

You can help by providing any additional covers that I have not identified and forward photo scans of these covers to me at stonycwoods840@gmail.com. Duplicates would also be appreciated.



Figure 1. Wheel of Fortune cancel.

In 1880 the F.P. Hammond Co. of Aurora, Illinois, introduced the canceller seen in **Figure 1**. Today this fancy rubber canceller is called **Wheel of Fortune (WOF)**. The highly detailed stamper was made possible with the invention of vulcanized rubber. The Peerless Vulcanizer shown on the 1898 cover below in **Figure 2** may have been the type of machine to make the Wheel of Fortune device.

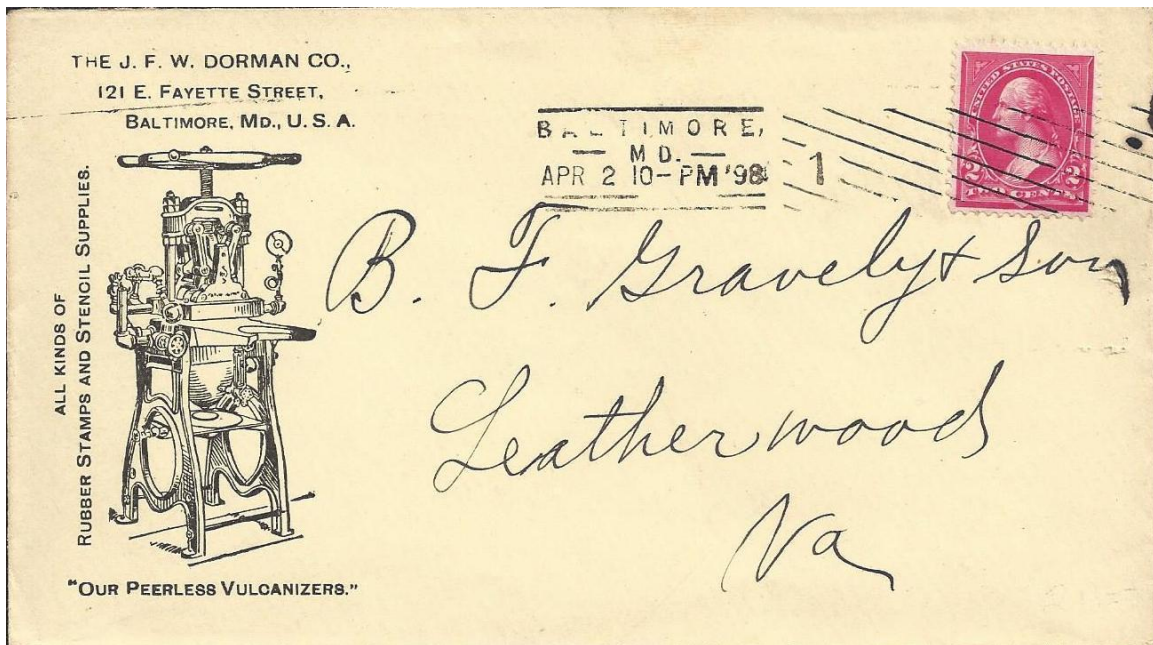


Figure 2. Cover bearing the corner card of The J. F. Dorman Co. and their Peerless Vulcanizers.

The first advertisement for the Wheel of Fortune appeared in the January 1881 issue of the *U.S. Official Postal Guide*. This advertisement is seen in **Figure 3**.

Although this ad depicts postmarks dating in the 1870's, the earliest WOF postmark found to date is February 26, 1880 from New Lisbon, Wisconsin.

Note the advertisement illustrates a "Best Offer Yet", where the canceller and kit cost only \$3.00.

New York has no covers dated in 1880-- the earliest is dated June 19, 1882 from Ouaquaga (Broome), NY. A scan of this cover is shown in **Figure 4**.

" WHEEL OF FORTUNE "

No. 529.

POST OFFICE SUPPLIES

ESTABLISHED 1872.

WE ARE HEADQUARTERS

For the most complete line of articles used by P. M.'s and their Clerks.

Engraved Letter Headings,
" Note Headings,
Stamp Ribbons (all colors),
Money Order Daters,
Post-Office Daters,
Registered Letter Daters,
Received Daters,
Patent Inking Pads,
P. O. Canceling Ink (*by Express*),
P. O. Rubber Canceling Corks,
Twine Cutters,
Steel and Rubber Stamp Racks,
Coin Detectors,
Paper Weights,
Letter and Package Scales,
Check Protectors,
Gem Type Case,

No. 530.





No. 531.





No. 532.





No. 533.





THE BEST OFFER YET.

One RUBBER P. O. Dater and Canceller, Ink Powder, and Pads, Dates for ten years in Walnut case with tweezers, and all the single line stamps needed in a **UNCLAIMED** Post Office, this style type: **UNCLAIMED**

By mail, postage paid, on receipt of price, \$3.00.

PROOFS FROM POSTMASTERS.

Your Quarterly Record received, and I like it very much. JOHN COON, P. M., California, Md.
The \$5 Outfit ordered by me was duly received this evening. They are all A No. 1 articles, and give entire satisfaction. — JAS. S. HANNA, P. M., Grangeburg, N. Y.
The Rubber Stamps, Note and Bill Heads, came to hand all right and meet with favor with those who have examined them, for cheapness, neatness, and durability. — T. W. LITTLE, P. M., Potters Rock, Pa.
I have been using one of your Stamps and Pads for the last year and it gives satisfaction. — W. S. BOWEN, P. M., Sheffield, Iowa.
I received my Note and Letter Heads, Dater, etc., all O. K. Am satisfied with your job. It far exceeds my expectations. WM. J. KING, P. M., Maxwell, Mo.
The Dater received, and I am well pleased with it. — CHAS. COON, P. M., Albion, Idaho.
Your Box Record received, and is all O. K. — J. W. FROW, P. M., Fort Madison, Iowa.
The Pads ordered came to-day. I am very much pleased with them. — ED. S. MENARD, P. M., St. Genevieve, Mo.

Illustrated Catalogue of Post Office Supplies sent free to Postmasters only. For samples of Note and Letter Headings send 6 cts. Address **F. P. HAMMOND & CO., Aurora, Illinois**

Figure 3. 1881 advertisement for the Wheel of Fortune cancellers.

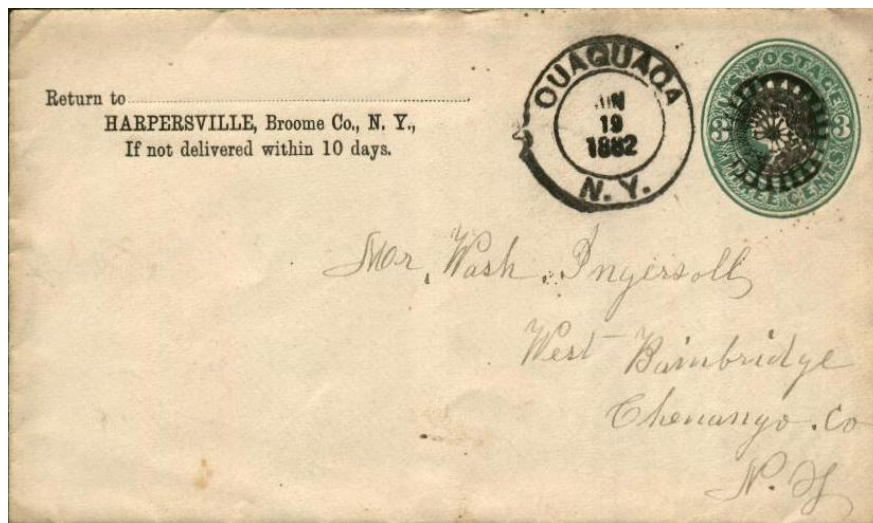


Figure 4. Earliest reported New York Wheel of Fortune cancel is 1882 from Ouaquaga (Broome), NY.

Figure 5 shows the seven different cancellations found on WOF covers. There are six duplex and one with only the WOF die, coupled with many different circular date stamps as shown on the West Hampton (Suffolk), New York cover seen in **Figure 6**. On this cover each stamp is cancelled with the use of a simplex, Type 0, WOF.

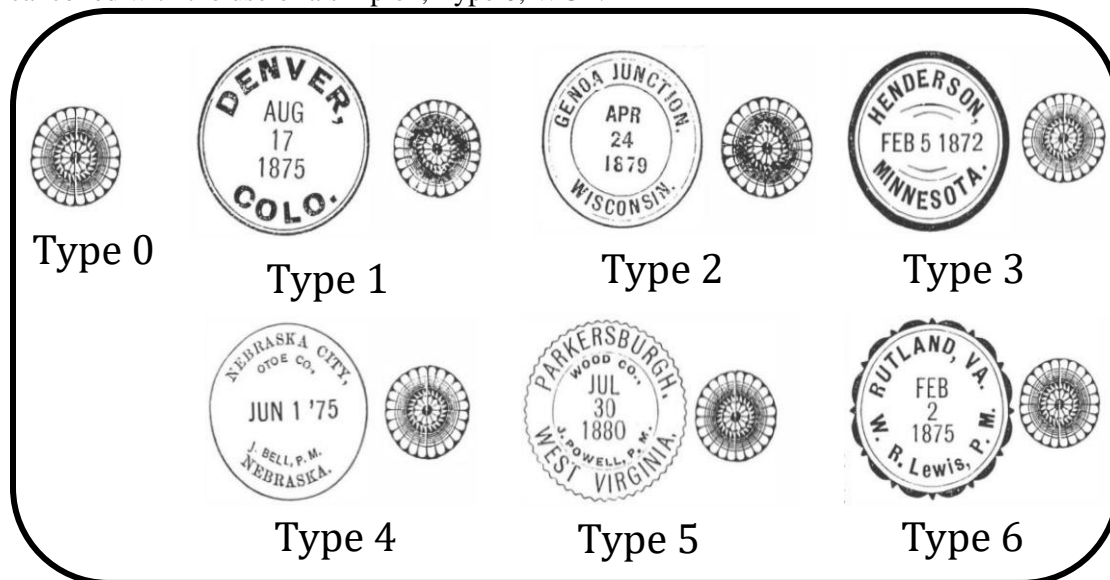


Figure 5. The various types of Wheel of Fortune cancels; one single and six duplexed.



Figure 6. Multiple use of the Type 0 cancellation a cover from West Hampton (Suffolk), NY.

The 1995 book *Cancellations and Killers of the Banknote Era 1870-1894* by James M. Cole listed a total of 353 US towns using the WOF cancel; for New York he listed 26 towns. Also, the Kelleher Auction of the 2011 Arthur Beane sale had 66 New York WOF covers listed. To date, 79 different New York towns have been identified as shown in **Figures 7-9**. **Figures 10-16** show some examples of Wheel of Fortune postmarked covers.

References:

- Cancellations and Killers of the Banknote Era 1870-1894* James M Cole
- US Cancellation Club News*
- Kelleher Auctions Sale #623, January 14, 2011 Arthur Beane

* Cole list ** 2011 Beane sale		Usage	Postmark Includes	--	Cover	
count	Town	Photo	Range	type	County	Date
1	NY Admire **					
	NY Alexandria Bay	p	1886-9	3	Jefferson County	86-9-8
2	NY Alexandria Bay	p	1886-9	3	Jefferson County	87-11-19
	NY Alexandria Bay	p	1886-9	3	Jefferson County	88-8-29
	NY Alexandria Bay * **	p	1886-9	3	Jefferson County	89-7-26
	NY Alexandria Bay	p	1886-9	3	Jefferson County	89-8-1
	NY Alexandria Bay	p	1886-9	3	Jefferson County	89-9-30
3	NY Allegany **				Chautauqua County	
	NY Almond	p	1883-6	3	Allegany County	83-9-25
	NY Almond	p	1883-6	3	Allegany County	83-10-9
	NY Almond	p	1883-6	3	Allegany County	84-1-19
4	NY Almond * **	p	1883-6	3	Allegany County	86-4-3
	NY Almond	p	1883-6	3	Allegany County	86-5-27
	NY Almond	p	1883-6	3	Allegany County	XX-6-24
	NY Almond	p	1883-6	3	Allegany County	XX-10-25
5	NY Amawalk **		1883		Westchester County	
6	NY Ames	p	1883-7	0	Montgomery County	83-1-6
	NY Ames	p	1883-7	0	Montgomery County	83-xx-19
	NY Ames * **	p	1883-7	0	Montgomery County	86-7-2
	NY Ames	p	1883-7	0	Montgomery County	87-8-17
7	NY Ashford	p	1883	1	Cattaraugus County	83-11-12
8	NY Athens	p	xx	0	Greene County	xx-10-20
9	NY Atwater **	p	1888	1	Cayuga County	88-10-24
10	NY Bangall * **	p	1884	1	Dutchess County	84-5-6
	NY Bangall	p	1884	1	Dutchess County	84-7-10
	NY Bangall	p	1884	1	Dutchess County	84-8-13
	NY Bangall	p	1884	1	Dutchess County	xx
11	NY Baychester **	p	1888	2	Bronx borough	88-9-21
	Bay Shore	p	1884-5	1	Suffolk County	84-9-18
12	NY Bay Shore * **	p	1884-5	1	Suffolk County	85-1-26
13	NY Bemus Point **	p	1887	0	Chautauqua County	87-10-31
14	NY Brookfield * **	p	1886-7	1	Madison County	86-3-9
	NY Brookfield * **	p	1886-7	1	Madison County	86-12-14
	NY Brookfield	p	1886-7	1	Madison County	87-4-15
	NY Brookfield	p	1886-7	1	Madison County	87-4-29
	NY Brookfield	p	1886-7	1	Madison County	87-7-25
15	NY Camroden **	p	1887	0	Oneida County	87-4-27
16	NY Castleton Corners * **	p	1886	2	Richmond County	Co 86-10-1
	NY Central Bridge	p	1884-6	2	Schoharie County	84-9-23
17	NY Central Bridge **	p	1884-6	2	Schoharie County	85-1-13
	NY Central Bridge	p	1884-6	2	Schoharie County	85-1-24
	NY Central Bridge	p	1884-6	2	Schoharie County	XX-12-4
18	NY Chateaugay **	p	1883	1	Franklin County	Co 83-3-17
19	NY Clinton * **	p	1886	1	Oneida County	86-10-20
20	NY Clinton Hollow **				Dutchess County	
21	NY Cock Burn	p	1886	3	Ulster County	86-8-3
	NY Coeymans	p	1886-7	1	Albany County	86-7-23
	NY Coeymans	p	1886-7	1	Albany County	86-9-21
	NY Coeymans	p	1886-7	1	Albany County	87-2-14
22	NY Coeymans * **	p	1886-7	1	Albany County	87-4-2
23	NY Cold Spring * **				Putnam County	

Figure 7.

count	Town	Photo	Usage Range	type	Postmark Includes County	--	Cover Date
24	NY Constableville	p	1888	0	Lewis County		88-12-28
25	NY Crystal Springs **				Yates County		
26	NY Fairfield **				Herkimer County		
27	NY Flint Creek	p	xx	1	Ontario County		xx-12-10
28	NY Florida **	p	1889	3	Orange County		89-12-2
	NY Florida	p	1889	3	Orange County		xx-4-24
29	NY Fonda **	p	1889	3	Montgomery County		89-11-12
	NY Ghent	p	1885-8	3	Columbia County		85-8-22
30	NY Ghent **	p	1885-8	3	Columbia County		88-3-26
31	NY Groveland * **	p	1886-8	2	Livingston County		86-6-22
	NY Groveland	p	1886-8	2	Livingston County		87-10-8
	NY Groveland	p	1886-8	2	Livingston County		87-10-10
	NY Groveland		1886-8	2	Livingston County		88-3-3
32	NY Guiderland Station	p	1887	2	Albany County		87-2-1
33	NY Hallspport **	p	xx	0	Allegany County		xx
34	NY Hamlin **	p	1885	0	Monroe County	PM	85-1-9
35	NY Hartford *		1882		Washington County		
36	NY Hartsdale **	p	1892	3	Westchester County		92-3-24
37	NY Highland Falls *				Orange County		
38	NY Highland Mills **	p	1883	1	Orange County		83-6-11
	NY Holland Patent	p	1884-7	2	Oneida County		83-5-23
39	NY Holland Patent * **	p	1884-7	2	Oneida County		84-4-14
	NY Holland Patent	p	1884-7	2	Oneida County		85-3-9
	NY Holland Patent	p	1884-7	2	Oneida County		86-12-24
	NY Holland Patent	p	1884-7	2	Oneida County		87-2-4
	NY Holland Patent	p	1884-7	2	Oneida County		87-5-5
	NY Holland Patent	p	1884-7	2	Oneida County		87-7-25
	NY Holland Patent	p	1884-7	2	Oneida County		87-11-24
40	NY Howard **	p	1885	3	Stueben County		85-1-29
41	NY Howe's Cave * **	p	1885	2	Schoharie County		85-9-8
42	NY Idlewild * **	p	1883-7	0	Orange County		83-5-23
	NY Idlewild		1883-7	0	Orange County		87-3-9
43	NY Larchmont Manor **	p	1885	2	Westchester County		85-3-29
44	NY Lebanon **	p	1884	1	Madison County,	PM	84-6-26
	NY Lebanon	p	1884	1	Madison County,	PM	84-7-18
45	NY Locke **	p	1887	3	Cayuga County	Co	87-3-15
46	NY Manhasset **				Queens County		
47	NY Maplevalley **				Otsego County		
48	NY Margaretville * **	p	1889	3	Delaware County		89-12-18
49	NY Moores Forks **				Clinton County		
	NY Morrisonville	p	1884-7	2	Clinton County		84-9-22
50	NY Morrisonville	p	1884-7	2	Clinton County		87-4-18
51	NY Morrisville **				Madison County		
52	NY New City **	p	1887	2	Rockland County		87-2-5
	NY New City	p	1887	2	Rockland County		87-2-5
	NY New City	p	1887	2	Rockland County		87-3-3
	NY New City	p	1887	2	Rockland County		xx-3-11
	NY New City	p	1887	2	Rockland County		xx-3-14
	NY New City	p	1887	2	Rockland County		xx-11-22

Figure 8.

Excelsior! September 2017, Whole No. 26/New Series

count	Town	Photo	Usage Range	type	Postmark Includes County	--	Cover Date
53	NY New Dorp * **				Richmond County		
54	NY Newfane **	p	1886	0	Niagara County		86-3-2
55	NY Newfane Station * **	p	1884	0	Niagara County	PM	84-12-17
56	NY New Harford * **	p	1882	2	Oneida County		82-12-16
57	NY Odessa * **	p	1884	1	Schuyler County		84-3-18
	NY Odessa	p	1884	1	Schuyler County		84-10-27
58	NY Olcott **	p	1886	0	Niagara County	PM	86-11-17
59	NY Oramel * **	p	1884-5	1	Allegany County		84-6-30
	NY Oramel	p	1884-5	1	Allegany County		85-12-1
60	NY Ouaquao(g)a **	p	1882	2	Broome County		82-6-19
	NY Ouaquao(g)a	p	1882	2	Broome County		xx-9-18
61	NY Remsen	p	1885	2	Oneida County		85-12-30
	NY Roxbury	p	1886	0	Delaware County		85-7-29
62	NY Roxbury * **	p	1886	0	Delaware County		86-9-25
63	NY Sandy Hill **				Washington County		
64	NY Stamford **	p	1883	2	Delaware County		83-2-18
	NY Stittville	p	1886-8	2	Oneida County		86-6-9
	NY Stittville	p	1886-8	2	Oneida County		86-7-1
	NY Stittville	p	1886-8	2	Oneida County		87-12-19
65	NY Stittville * **	p	1886-8	2	Oneida County		88-3-16
	NY Stittville	p	1886-8	2	Oneida County		xx-8-29
	NY Stittville	p	1886-8	2	Oneida County		xx-8-8
66	NY Stottville **				Columbia County		
67	NY Tallette	p	1885	5	Chenango County	PM Co	85-6-18
68	NY Tomkin's Cove *	p	1884	2	Rockland County		84-9-23
	NY Tomkin's Cove	p	1884	2	Rockland County		84-10-6
69	NY Town Line **				Erie County		
70	NY Vernon Centre **	p	1893-8	3	Oneida County		93-4-17
	NY Vernon Centre	p	1893-8	3	Oneida County		93-8-30
	NY Vernon Centre	p	1893-8	3	Oneida County		93-10-9
	NY Waddington	p	1883	2	St Lawrence County		88-11-20
71	NY Waddington **	p	xx	2	St Lawrence County		xx-11-26
72	NY Wallace **				Steuben County		
73	NY Walton **	p	1886-7	1	Delaware County		86-5-10
	NY Walton	p	1886-7	1	Delaware County		86-6-1
	NY Walton	p	1886-7	1	Delaware County		86-11-18
	NY Walton	p	1886-7	1	Delaware County		87-1-3
	NY Walton	p	1886-7	1	Delaware County		87-1-5
	NY Walton	p	1886-7	1	Delaware County		87-2-11
74	NY West Almond **				Allegany County		
	NY West Hampton	p	1884-8	2	Suffolk County		84-11-19
	NY West Hampton	p	1884-8	2	Suffolk County		84-11-10
	NY West Hampton	p	1884-8	2	Suffolk County		85-8-31
75	NY West Hampton * **	p	1884-8	2	Suffolk County		88-7-6
	NY West Junius	p	1884-5	2	Seneca County		84-4-9
76	NY West Junius **	p	1884-5	2	Seneca County		85-2-27
77	NY W Richmondville	p	1886	1	Schoharie County		86-2-1
78	NY Wilbur **				Ulster County		
79	NY Yorkshire Centre				Cattaraugus County		

Figure 9.



Figure 10. Bangall (Dutchess) August 13, 1884.



Figure 11. Bay Shore (Suffolk) January 26, 1885.



Figure 12. Groveland (Livingston) October 10, 1887.



Figure 13. Morrisonville (Clinton) April 18, 1887.



Figure 14. Odessa (Schuyler) March 18, 1884.



Figure 15. Oramel (Allegany) June 30, 1884.



Figure 16. Vernon Centre (Oneida) August 30, 1893.

Larry Rausch may be reached at stonywoods840@gmail.com.