

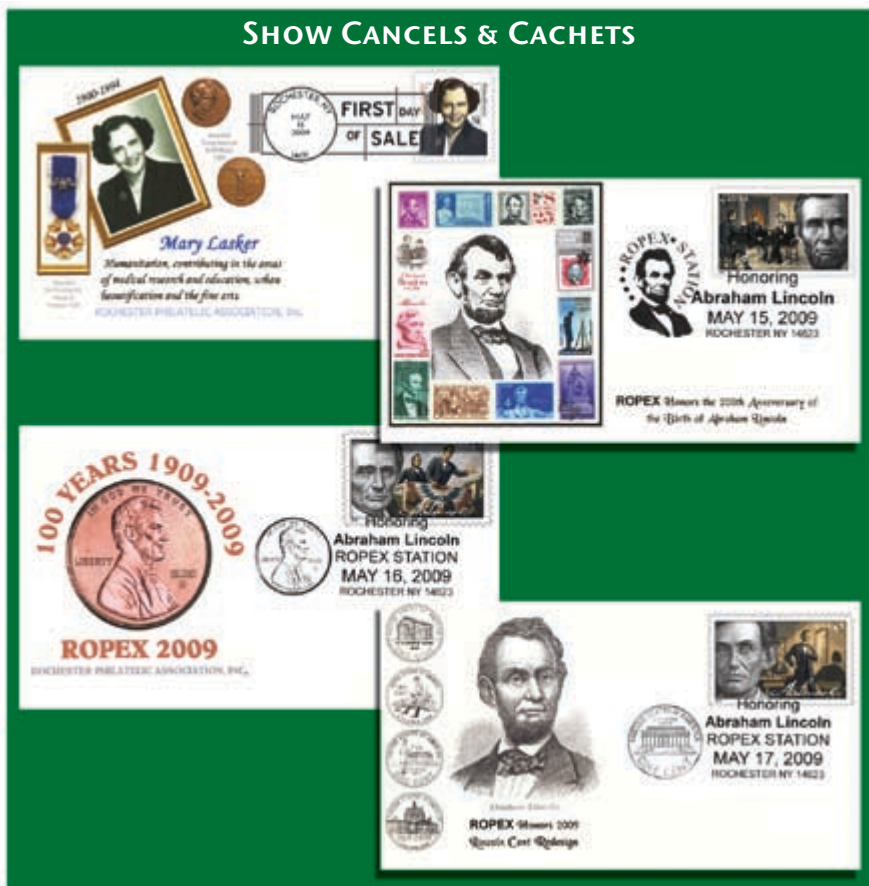
# ROPEX 2009

## PREVIEW



MAY 15–17 AT ESL SPORTS CENTER  
2700 BRIGHTON HENRIETTA TOWNLINE ROAD  
HENRIETTA, NEW YORK  
FRIDAY 11–6 • SATURDAY 10–5 • SUNDAY 10–3  
FREE ADMISSION AND PARKING

## SHOW CANCELS & CACHETS



### SERVICED CACHETS ORDER FORM

Cover	Quantity	Price	Total
Mary Lasker First Day of Sale		\$3.00	
Lincoln With Stamps		\$2.00	
Lincoln Penny Centennial		\$2.00	
Lincoln With Pennies		\$2.00	
Set of Three Lincoln Themes		\$5.00	
Total			

Please provide a stamped, self-addressed envelope.

Please make checks payable to:

**ROPEX 2009**


**P. O. Box 10206, Brighton Station**

**Rochester, NY 14610-0206**

# LINDNER

*Das Original*

**Come Visit Us At ROPEX!**  
**Booth 29**



LINDNER Publications has all of your stamp supplies and accessories. Check out our great deals on Stockbooks, Magnifiers, FDC-Albums, and so much more!

**We have the storage solutions for YOU.**



LINDNER Publications, Inc. 800-654-0324  
PO Box 5056 Syracuse, NY 13220 · [www.lindner-usa.com](http://www.lindner-usa.com)

**SAVE NOW!**

Order now and save 20% off our catalog prices.  
Please use Coupon Code: MP909 to save !

---

## SHOW SCHEDULE

### Thursday, May 14

8 a.m.–6 p.m. ROPEX setup (exhibitors and dealers welcome 1–6 p.m.)

### Friday, May 15

9:30–11 a.m. Early bird bourse — \$20 entry fee for collectors and dealers

10:30–11 a.m. Mary Lasker first day of sale ceremony (Room 1)

11 a.m. Show opens: Welcome and ribbon cutting ceremony, show entrance

11 a.m.–6 p.m. Prize drawings throughout the day

1–2 p.m. ACE (Art Cover Exchange) general meeting (Room 1)

6 p.m. Show closes

### Saturday, May 16

10 a.m. Show opens

10 a.m.–5 p.m. Prize drawings and youth activities throughout the day

Noon–5 p.m. Cachetmakers' bourse

Noon–1 p.m. Empire State Postal History Society trading hour and Buffalo postal history presentation (Room 1)

1–2 p.m. Empire State Postal History Society annual meeting (Room 1)

1–2 p.m. Walk-through discussion of exhibits — all welcome (Frame 1)

2–3 p.m. American Association of Philatelic Exhibitors seminar (Room 1)

3–4:30 p.m. Judges exhibit critique (Room 1)

5 p.m. Show closes

6–6:30 p.m. Awards banquet cocktails (Domenico's Ristorante)

6:30 p.m. Awards banquet (Domenico's Ristorante)

### Sunday, May 17

10 a.m.–3 p.m. Prize drawings and youth activities throughout the day

1–2 p.m. Federation of New York Philatelic Societies meeting (Room 1)

3 p.m. Show closes

3 p.m. Exhibitors reception and exhibit pickup

*Essential Information for Philatelists!*

# Stamp Insider

*Seeing Is Believing!*

*Bimonthly \$10.00 per year.*

*To subscribe or for a sample copy:*

Federation of New York Philatelic Societies

1105 Union St., Schenectady, NY 12308-2805

[www.nystampclubs.org](http://www.nystampclubs.org)

ROPEX PREVIEW

---

## DEALERS

- 1840–1950 MOSTLY STAMPS** — U.S., British Empire, and worldwide stamps, covers, lots  
**DAVE ALLEGO** — Worldwide covers, cinderellas, and ephemera  
**AMBERMAN POSTAL HISTORY** — U.S. 19th and 20th century covers  
**BARDO STAMPS** — U.S. #1 to present  
**TOM BARON COVERS** — 20th century U.S. covers  
**BRITANNIA ENTERPRISES** — Worldwide covers, cinderellas, and ephemera  
**CHRISTOPHER/RICHARD COVERS** — Worldwide covers  
**THE COVER CONNECTION** — U.S. and worldwide covers  
**AL GRECO STAMPS** — U.S. and worldwide stamps, U.S. and Canadian revenues  
**WILLIAM H. HATTON** — U.S. stamps, worldwide covers, postcards, and literature  
**LINDNER PUBLICATIONS** — Supplies, gifts, and accessories  
**MCCLOUD STAMPS & COVERS** — U.S., Canada, France, and worldwide  
**NUNESNOOK** — U.S. and worldwide covers, and ephemera  
**PLATEBLOCKETC** — U.S. stamps, plate blocks, and covers  
**LES ROSEN** — U.S. and worldwide FDCs and maxicards  
**ROSEN DOLLAR TABLE** — Stamps, covers, etc.: everything \$1 or less  
**JOHN L. RUDNICKI** — Poland, back of the book and collections, topicals including Europa  
**ROBERT C. SWED** — U.S. used stamps and covers, and classic FDCs  
**TOGA ASSOCIATES** — British Empire and worldwide stamps  
**TOM'S STAMPS** — Classic U.S. mint/used, worldwide stamps, and lots  
**AL "DOC" TURNER** — Classic U.S., British North America, and Scandinavia  
**DOUG WEISZ U.S. COVERS** — U.S. covers: FDCs, naval, flights, and events  
**S. J. WILLIS STAMPS** — U.S. and foreign stamps, especially pre-1960  
**LAURENCE L. WINUM** — U.S. and Germany stamps and covers  
**FRED ZAGANIACZ STAMPS** — Worldwide stamps / covers, U.S. covers, and topicals

## CACHETMAKERS

- ARMSTRONG CACHETS** — Hand-drawn cachets  
**CL CACHETS** — Award-winning, single-color cachets, including ROPEX 2008 FDOIs  
**3-DLAZ CACHETS** — Limited edition handmade 3D cachets

## RAFFLES

There will be a special raffle for a stamp quilt created by Diane Bombard in addition to a Chinese ("you choose") raffle which will feature items donated by local businesses and RPA members. Both are only for those 18 and older. Tickets for both raffles are \$1 each and will be drawn on Sunday, May 17 at 1:30 p.m. Ticket holders need not be present to win. Go to [www.rpastamps.org/rope.html](http://www.rpastamps.org/rope.html) for updated information.



MAY 15–17, 2009

# United States



Join us at ROPEX Table 16

- **MODERN MINT**
- **PRE-1940 USED**
- **PRE-1940 MINT**
- **PLATE BLOCKS**
- **CUT SQUARES**
- **REVENUES**
- **BACK-of-BOOK**

Also Available ...  
**FREE PRICE LISTS**

*Including All Areas of  
AUSTRIA, CANADA, DENMARK,  
FRANCE, GERMANY, GREAT  
BRITAIN, ICELAND, IRELAND,  
JAPAN, MONACO, NORWAY  
& SWEDEN*



**LAURENCE L. WINUM**

P. O. Box 247, Dept. Y  
Walden, NY 12586

APS 51900 • ARA 1970 • Est. 1964

**1-800-914-8090**

E-mail: [winum@frontiernet.net](mailto:winum@frontiernet.net)

# John L. Rudnicki

Dealer in Fine Stamps at  
ROPEX Table 20

**Buy & Sell**



Poland is my specialty!

I also deal in  
Japan, Germany, Berlin,  
DDR, Vatican, Canada,  
Ireland, Sweden, Iceland & Europa

25 DeForest Drive  
Brampton, ON L7A 2Y1  
Canada (905) 495-0603

e-mail: [rudnicki@rogers.com](mailto:rudnicki@rogers.com)



Member



ADVENTURE  
GRAPHICS



*The Power of Color*



1234 Round Table, Dallas, TX 75247  
800-851-7996 • [www.adventuregraphics.com](http://www.adventuregraphics.com)

# WELCOME TO ALBANY ...

## *It's Time To Visit and Exhibit!*

StampExpo 400 is a one-time APS-recognized national exhibition. Planned are 200+ frames of competitive philatelic exhibits, a national literature competition, a cachet contest, Stamp Camp USA, 120 dealers, and much more.

Plan now to attend and exhibit! For more show information and accommodation details, visit our web site or contact:

**SHOW TREASURER**  
**RONALD K. RATCHFORD**  
1105 UNION STREET

SCHENECTADY, NY 12308-2805  
RRATCHFORD@NYSTAMPCLUBS.ORG

*View of Albany from the East by Jim Flosdorf*  
Professor Emeritus of The Sage Colleges ([www.jfpan.com](http://www.jfpan.com))

**September 25-27, 2009**  
**Empire State Plaza, Albany**

**StampExpo400.org**  
HUDSON • FULTON • CHAMPLAIN



## **PlateBlockEtc**

Visit Me at Ropex Table 2

**Offering & Buying**

**U.S. Singles, Blocks, Mini Sheets**

Cell Phone: 678-595-7827

# **Dick Hall**

P. O. Box 2552, Fort Myers Beach, FL 33932

*e-mail [plateblocketc@yahoo.com](mailto:plateblocketc@yahoo.com)*

*Download price lists from —*  
*[www.geocities.com/plateblocketc](http://www.geocities.com/plateblocketc)*

*& see my listings on [stampwants.com](http://stampwants.com) & [eBay.com](http://eBay.com)*

MAY 15-17 ★ WORLD SERIES OF PHILATELY

P. O. BOX 10206, BRIGHTON STATION  
ROCHESTER, NY 14610-0206



To be removed from this mailing list, e-mail [stmptms@frontiernet.net](mailto:stmptms@frontiernet.net)  
or write to the ROPEX post office box.