

THE 15¢ JAMES BUCHANAN STAMP

from the 1938 Presidential Series

PURPOSE: This traditional exhibit was formed to illustrate the stamps and usages of the Prexie series 15¢ value. It is the culmination of a 10 year study of the stamp.

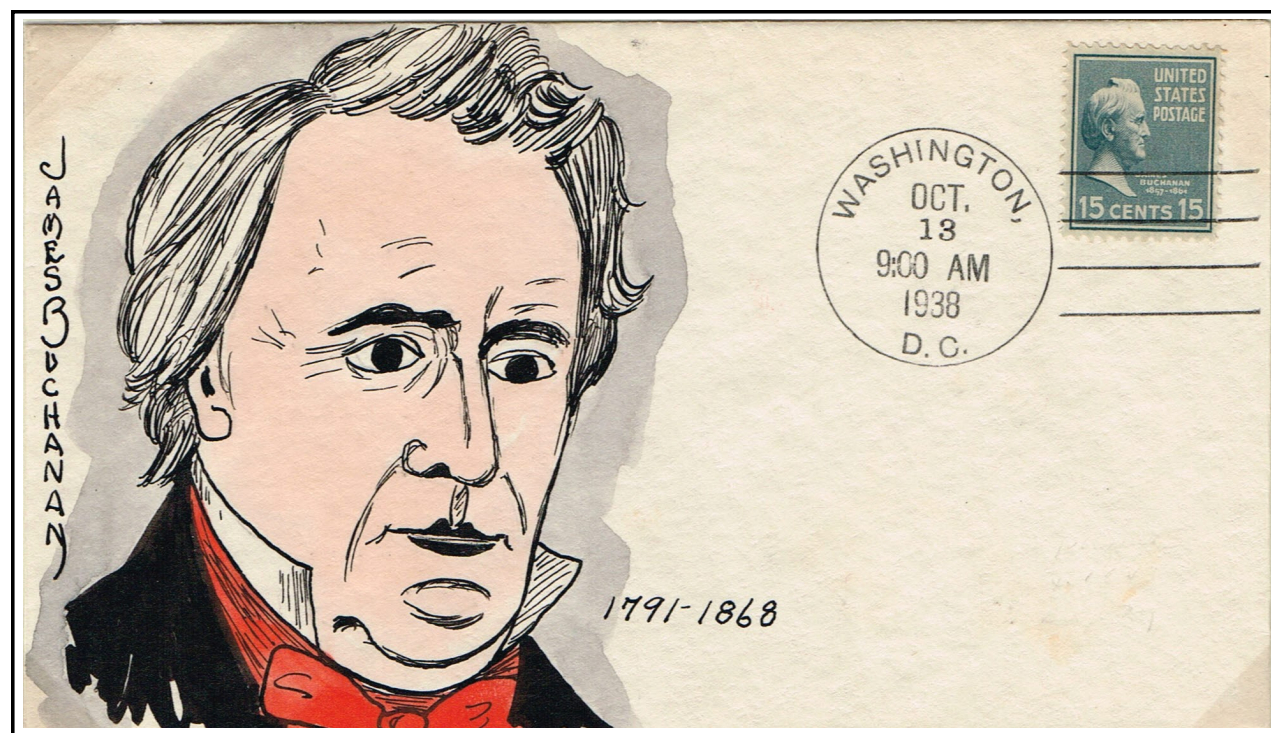
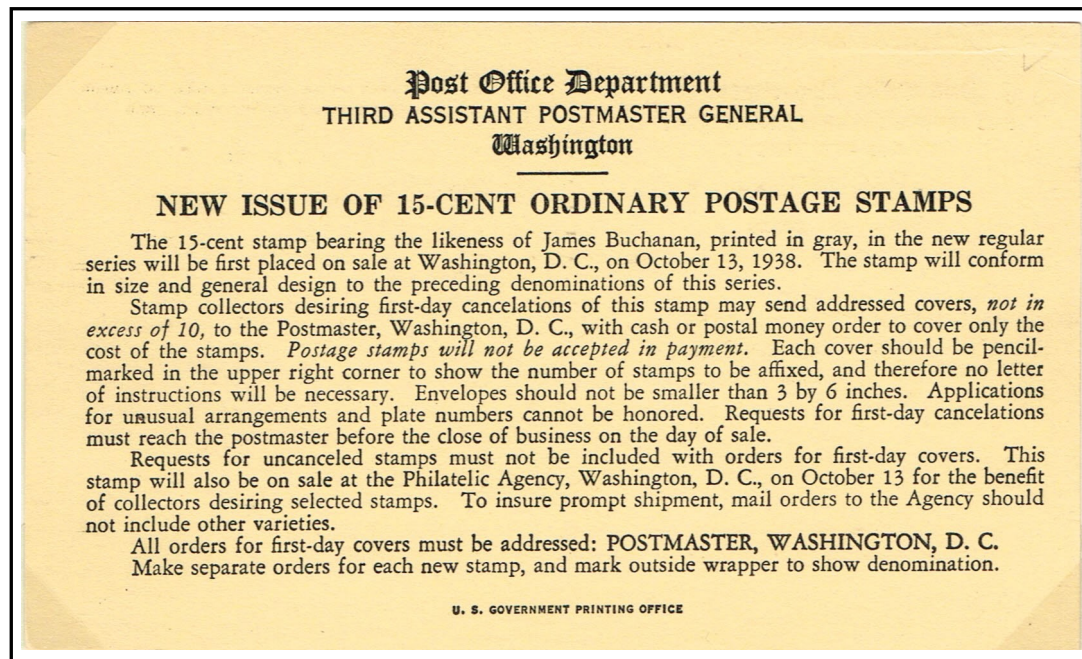
THE STAMP: Issued October 13, 1938, and featuring the likeness of James Buchanan, 15th President, it is one of 32 values in the Presidential series, The stamp served through World War II into the 1950s when Prexies were replaced by the Liberty Series. More detailed information is on the post office announcement below.

CONTENT: The viewer can expect to see all known pre-production material of this stamp, examples that will communicate how the stamp was produced and a full breadth of usages for this Prexie workhorse. While the usage section is not a rate study, the exhibit offers a number of scarce, short lived rates and scarce usages.

SPECIAL ITEMS: Items of particular interest and/or scarcity are indicated by a red box. While items may be scarce, they are noted because of their philatelic interest, not necessarily their rarity. Special attention should be given to the only known small die proof as well as discoveries of at least two unique usages - an airmail registered receipt card returned from Europe and Prexie stamps paying customs duty for merchandise. Each is outlined in red.

ORGANIZATION: The exhibit begins with pre-production items, moves to stamp production, then to covers organized by usage.

Post Office announcement of the stamp to be issued on October 13, 1938.



First day cover hand painted by Mae Weigand

SECTION	FRAME:PAGE
Pre-production Materials	1:02
Stamp Production	1:03 - 1:08
with Anomalies, EFO's and other applications	
Domestic Usages	
Surface	2:01 - 2:02
Air	2:03 - 2:04
Special Services	2:05 - 3:03
Including Registered and Special Delivery	
International Usages	
Surface	3:04
Air	3:05- 4:03
Special Services	4:04 - 4:06
Including Registered and Special Delivery	
Fiscal Usages	4:07 - 5:01
Other Usages	5:02 - 5:04
Military Usages	5:05 - 5:08a
Mixed Use	5:08b