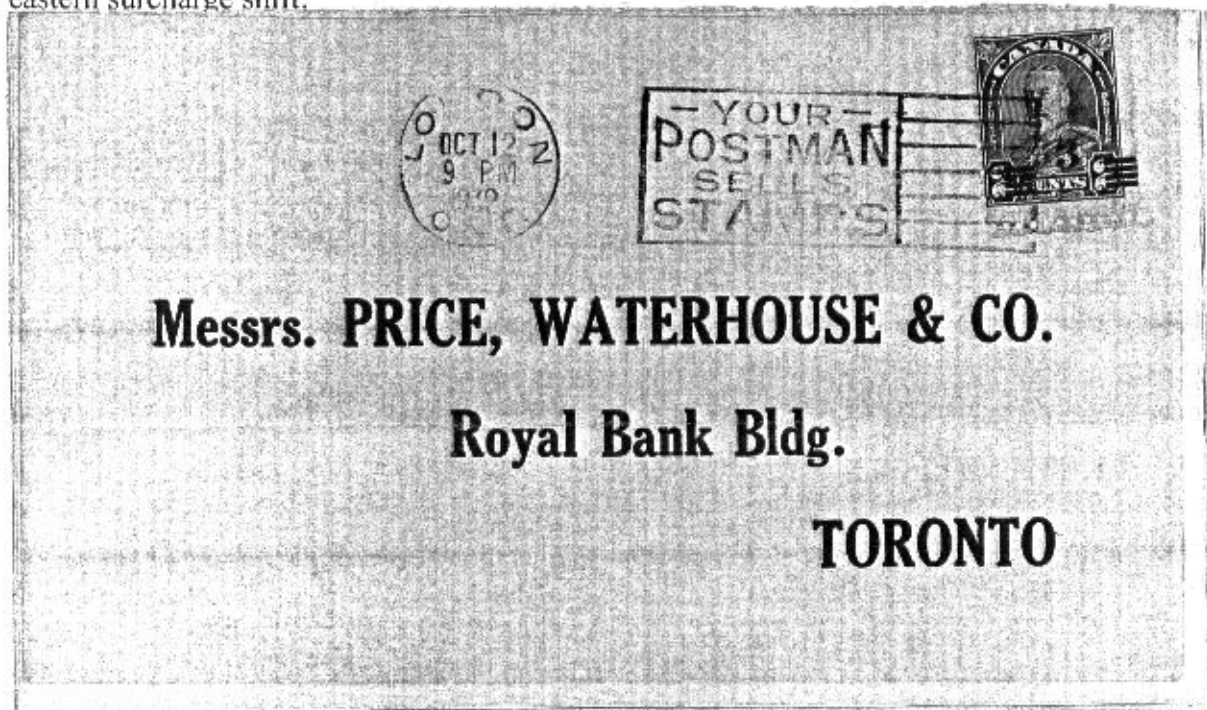


**VARIETIES OF THE TWO  
CENT RED ARCH ISSUE WITH  
EMPHASIS ON THE  
OVERPRINTED COUNTERPART  
OF 1932**

This exhibit will exemplify a collection of the 2 cent red Arch issue that were issued contemporary in the early 1930's time period to the public. Some unoverprinted stamps will demonstrate the same constant flaw with their overprinted counterparts. However the focus of this exhibit will be on the overprinted issue in formats of mint singles, multiples and used on cover illustrating different variants due to constant plate flaws or the surcharge itself. Any item of importance will be denoted by italics.

The DIE I on cover possesses a 'kiss print' of both '2' 's in the southern margin as well as an eastern surcharge shift.



**CONTENTS**

1. **Historical Background.**
2. **Constant Plate Flaws That Are Design Related in Both Overprinted and Unoverprinted States.**
3. **Constant Plate Flaws of Overprint Origin.**
4. **Shifted Surcharges.**
5. **Overprinted '3' Inking.**
6. **Bar Surcharge Inking.**
7. **Odd's and Sodd's.**