



**NY  
2016**

# World Stamp Show-NY 2016 Wrap-Up

May 28-June 4, 2016

Javits Center, 655 West 34th Street  
New York City

[www.ny2016.org](http://www.ny2016.org)

[info@ny2016.org](mailto:info@ny2016.org)



*Pinterest*

YouTube

Well, it's over...

After more than 10 years in the making, America's 11<sup>th</sup> great international philatelic exhibition is now history, thanks to hundreds of volunteers who contributed thousands of man (and woman!) hours to make it happen. It was an incredible effort by everyone.

This brief tribute is a small thanks to them all.



It started with a proposal and the vision of two men in particular extolling the virtues of their hometown in past philatelic ventures.



Wade Saadi



Steven Rod

**NY 2016**

### Why New York City?

- 1) Population Density +
- 2) Attraction of Venue +
- 3) Ease of Access =

**Highest Attendance & Most Successful Show**

The complex block contains several images: a photo of a large exhibition hall with many people, a photo of a statue in a museum setting, and two postage stamps featuring the Statue of Liberty. The stamps are labeled 'U.S. POSTAGE 8c' and 'U.S. POSTAGE 11c' with the word 'LIBERTY' at the bottom.

Strong bids from Columbus and New York City show organizers were heard by the APS Board in 2005, which in a split decision selected New York City's proposal to host the international exhibition in 2016.

Assistance from the Collectors Club, Philatelic Federation and their respective members was key to getting things off to an early start.



**NY  
2016**



# Along the way leaders from the philatelic community from around the country were asked to share their expertise in this great effort.

## Officers\* and Board Members

 <b>President*</b> <b>Wade E. Saadi</b> New York, NY <a href="#">(bio)</a> <a href="mailto:wade.saadi@ny2016.org">wade.saadi@ny2016.org</a>	 <b>Executive Assistant</b> <b>Christine Jimenez</b> Secaucus, NJ <a href="#">(bio)</a> <a href="mailto:christine.jimenez@ny2016.org">christine.jimenez@ny2016.org</a>
 <b>Vice President</b> <b>Steven J. Rod</b> South Orange, NJ <a href="#">(bio)</a> <a href="mailto:steven.rod@ny2016.org">steven.rod@ny2016.org</a>	 <b>Secretary</b> <b>Bruce Marsden</b> Short Hills, NJ <a href="#">(bio)</a> <a href="mailto:bruce.marsden@ny2016.org">bruce.marsden@ny2016.org</a>
 <b>Treasurer Director*</b> <b>Roger Brody</b> Watchung, NJ <a href="#">(bio)</a> <a href="mailto:roger.brody@ny2016.org">roger.brody@ny2016.org</a>	 <b>General Counsel Director*</b> <b>Thomas Mazza</b> New York, NY <a href="#">(bio)</a> <a href="mailto:thomas.mazza@ny2016.org">thomas.mazza@ny2016.org</a>

## Committee Chairs

 <b>Auction</b> <b>Andrew Tittle</b> Dallas, TX <a href="#">(bio)</a> <a href="mailto:andrew.tittle@ny2016.org">andrew.tittle@ny2016.org</a>	 <b>Awards</b> <b>Gene Fricks</b> New York, NY <a href="#">(bio)</a> <a href="mailto:gene.fricks@ny2016.org">gene.fricks@ny2016.org</a>
 <b>Bourse</b> <b>Tami Jackson</b> Leesport, PA <a href="#">(bio)</a> <a href="mailto:tami.jackson@ny2016.org">tami.jackson@ny2016.org</a>	 <b>Cachets and Cancells</b> <b>Henry Scheuer</b> New York, NY <a href="#">(bio)</a> <a href="mailto:henry.scheuer@ny2016.org">henry.scheuer@ny2016.org</a>
 <b>Commissioner General</b> <b>Stephen D. Schumann</b> Hayward, CA <a href="#">(bio)</a> <a href="mailto:stephen.schumann@ny2016.org">stephen.schumann@ny2016.org</a>	 <b>Asst. Comm. General</b> <b>Bruce Marsden</b> Short Hills, NJ <a href="#">(bio)</a> <a href="mailto:bruce.marsden@ny2016.org">bruce.marsden@ny2016.org</a>
 <b>Design</b> <b>Niko Courtelis</b> Portland, OR <a href="#">(bio)</a> <a href="mailto:niko.courtelis@ny2016.org">niko.courtelis@ny2016.org</a>	 <b>Development</b> <b>Charles Shreve</b> Dallas, TX <a href="#">(bio)</a> <a href="mailto:charles.shreve@ny2016.org">charles.shreve@ny2016.org</a>
 <b>Entertainment and Social</b> <b>Carol Bommarito</b> New York, NY <a href="#">(bio)</a> <a href="mailto:carol.bommarito@ny2016.org">carol.bommarito@ny2016.org</a>	 <b>Entry Level and Youth</b> <b>Michael Bloom</b> Portland, OR <a href="#">(bio)</a> <a href="mailto:michael.bloom@ny2016.org">michael.bloom@ny2016.org</a>

 <b>Functions and Activities</b> <b>Gail Saadi</b> New York, NY <a href="#">(bio)</a> <a href="mailto:gail.saadi@ny2016.org">gail.saadi@ny2016.org</a>	 <b>Judges and Judging</b> <b>Stephen Reinhard</b> Mineola, NY <a href="#">(bio)</a> <a href="mailto:stephen.reinhard@ny2016.org">stephen.reinhard@ny2016.org</a>
 <b>Chairman of the Jury</b> <b>Robert P. Odenweller</b> Bernardsville, N.J. <a href="#">(bio)</a> <a href="mailto:robert.odenweller@ny2016.org">robert.odenweller@ny2016.org</a>	 <b>Liberty Club</b> <b>Alex Haimann</b> St. Louis, MO <a href="#">(bio)</a> <a href="mailto:alex.haimann@ny2016.org">alex.haimann@ny2016.org</a>
 <b>Marketing and Public Relations</b> <b>Thomas M. Fortunato</b> Rochester, NY <a href="#">(bio)</a> <a href="mailto:thomas.fortunato@ny2016.org">thomas.fortunato@ny2016.org</a>	 <b>Social Media</b> <b>Janet Klug</b> Pleasant Plain, OH <a href="#">(bio)</a> <a href="mailto:janet.klug@ny2016.org">janet.klug@ny2016.org</a>
 <b>Society and Affiliates</b> <b>Rodney Juell</b> Joliet, IL <a href="#">(bio)</a> <a href="mailto:rodney.juell@ny2016.org">rodney.juell@ny2016.org</a>	 <b>Volunteers</b> <b>Mark Butterline</b> Boston, MA <a href="#">(bio)</a> <a href="mailto:mark.butterline@ny2016.org">mark.butterline@ny2016.org</a>

## Committee Members-at-Large

 <b>Ex Officio</b> <b>Scott English</b> Bellefonte, PA <a href="#">(bio)</a> <a href="mailto:scott.english@ny2016.org">scott.english@ny2016.org</a>	 <b>Ex Officio</b> <b>Megan Orient</b> Bellefonte, PA <a href="#">(bio)</a> <a href="mailto:megan.orient@ny2016.org">megan.orient@ny2016.org</a>
 <b>Ex Officio</b> <b>Ken Martin</b> Bellefonte, PA <a href="#">(bio)</a> <a href="mailto:ken.martin@ny2016.org">ken.martin@ny2016.org</a>	 <b>Show Floor Manager</b> <b>Dana Guyer</b> Centre Hall, PA <a href="#">(bio)</a> <a href="mailto:dana.guyer@ny2016.org">dana.guyer@ny2016.org</a>
 <b>Editor - Exhibition Catalogue</b> <b>Matthew Healey</b> USA <a href="#">(bio)</a> <a href="mailto:matthew.healey@ny2016.org">matthew.healey@ny2016.org</a>	 <b>Database Manager</b> <b>Eric Jackson</b> Leesport, PA <a href="#">(bio)</a> <a href="mailto:eric.jackson@ny2016.org">eric.jackson@ny2016.org</a>
 <b>Web Site Development</b> <b>Michael Eastick</b> Forest Hill, VIC Australia <a href="#">(bio)</a> <a href="mailto:michael.eastick@ny2016.org">michael.eastick@ny2016.org</a>	 <b>Entry Level and Youth</b> <b>Debby Friedman</b> New York, NY <a href="#">(bio)</a> <a href="mailto:debby.friedman@ny2016.org">debby.friedman@ny2016.org</a>
 <b>Andrew Kupersmit</b> Metuchen, NJ <a href="#">(bio)</a> <a href="mailto:andrew.kupersmit@ny2016.org">andrew.kupersmit@ny2016.org</a>	



# Individual and organizational donors came forward to help with startup costs.

## Donor Sponsors (\$50,000 and Above)

Collectors Club, NY ([www.collectorsclub.org](http://www.collectorsclub.org))  
 The Philatelic Foundation ([www.philatelicfoundation.org](http://www.philatelicfoundation.org))  
 Washington 2006 Exposition

## Philatelic Patron (\$25,000)

Westpex, Inc. ([www.westpex.com](http://www.westpex.com))

## Charitable Foundation Support (\$25,000 and above)

TurningPoint Foundation - Pavilion Theater

## Major Supporters (\$10,000-\$15,000)

Earl P.L. Apfelbaum, Inc.  
 Carol Bommarito  
 Roger Brody  
 James P. Gough  
 Edward J.J. Grabowski  
 Larry Hunt  
 Eric and Tami Jackson  
 David Zlowe

## Liberty Platinum Members (\$5,000-\$9,999)

John Barwis  
 Ian C. Gibson-Smith  
 Anna Lee  
 David Gorham

## Liberty Gold Members (\$2,500)

Murray A. Abramson, MD	Jim and Sue Dempsey	Vernon R. Morris, Jr., MD
James Allen	Anthony M. Dewey	NAPEX
Anonymous	Hugh Feldman	Robert G. Rose
John Apfelbaum	Robert D. Forster	Steven J. Rod
William P. Barlow, Jr.	Alex Haimann	Mark Schwartz
Paul Bartolomei	Leonard Hartmann	Keith Stuppell
Jonathan Becker	Chris King	Mark Taylor
Charles Bentley	Nicholas Kirke	Steven Walske
Roland Cipolla II	Daniel M. Knowles, M.D.	Alan Warren
Nancy and Douglas N. Clark	Thomas W. Lane	Richard Winter
	Richard C. Malmgren	Alfonso G. Zulueta, Jr.
	Robert Wayne Martin	

## Liberty Silver Members (\$1,500)

Dr. Dane S. Claussen	Clifford R. "Rob" Lund	William A. Sandrik
Dr. Warachal Faison	Millard H. Mack	William L. Strauss
Dan French	Michael J. and Anna	Blair Tremere
Robert Johnson	Marie McCabe	Hal Vogel
William Johnson	Foster Miller	Danforth Walker
Benjamin Y. Lee	Christina Price	David Wallman

## Liberty Members (\$1,000)

Kees Adema	Greater Philadelphia	Northeast Federation of
Anonymous	Stamp & Collectors Club	Stamp Clubs
Akthem Al-Manaseer	Jonas Hallstrom	James O'Mara
Manuel Arango	Matthew Healey	Robert P. Odenweller
Ted Bahry	Robert R. Hegland	Stephen B. Pacetti
Michael & Faye Bass	Gary Hendren	Louis Pataki
Jan Berg	John Hotchner	Philatelic Club of Will
Thomas Bienosek	Michael Jacobs	County, Ill.
Michael Bloom	Edgar Jatho	Marvin Platt
Lyle Boardman	Bill Johnson	James Pullin
Dr. Allan Boudreau	Robert Juceam	Eric Rasmussen
Robert Boyd	David A. Kent	Stephen Reinhard
Thomas Broadhead	Janet R. Klug	Rocky Mountain Philatelic
Mark A. Butterline	Keith Klugman	Library
Louis Caprario	Yamil H. Kouri, MD	William Schultz
Richard A. Colberg	Edward Kroll	Frederick C. Skvara, MD
Vincent Cosenza	Douglas K. Lehmann	K. David Steidley
Santiago Cruz	Geoffrey Lewis	Clarence Stillions
Delcampe International	Michael Ley	James Grimwood Taylor
W. Douglas Drumbheller	Dwayne O. Littauer	May Day Taylor
Ann Dunkin	Larry Lyons	Dr. Ben Termini
Jack Dykhouse	Kenneth Martin	United Postal Stationery
David Eeles	Thomas Mazza	Society
Dale F. Forster	Edward Mendlowitz	Andrew Urushima
Thomas Fortunato	Gordon C. Morison	Ed W. Wise
Deborah Friedman	Ralph Nafziger	Charles Wooster
Cheryl R. Ganz	Behruz Nassre-Esfahani	Joe Youssefi
Chip Gliedman	Randy Neil	Mitchell M. Zais
	North Carolina Postal	
	History Society	

## The Leadership Circle



Anonymous 1



Anonymous 2



Gordon E. Eubanks, Jr.

[\(Comments\)](#)



Alfredo Frohlich



Joseph Hackney



Alan & Mitch Holyoake

[\(Comments\)](#)



Vince and Becky King



George J. Kramer

[\(Comments\)](#)



Daniel J. Ryterband

[\(Comments\)](#)



Wade Saadi



Charles Shreve



Helen and Harlan Stone

[\(Comments\)](#)



Donald Sundman

[\(Comments\)](#)



Hugh Wood

[\(Comments\)](#)



**NY  
2016**



# Societies contributed as well.

## Corporate Matching Partners

Aetna Foundation

Computer Associates

## Society Participation

*(these groups have made donations securing booth and meeting room space)*

### \$2,000 Super Booth Sponsors

American Topical Association (ATA) [americantopicalassn.org](http://americantopicalassn.org)

Confederate Stamp Alliance (CSA) [www.csalliance.org](http://www.csalliance.org)

Royal Philatelic Society of London (RPSL) [www.rpsl.org.uk](http://www.rpsl.org.uk)

United Postal Stationery Society (UPSS) [www.upss.org](http://www.upss.org)

*shared with* Postal Order Society (POS) [postalordersociety.blogspot.com](http://postalordersociety.blogspot.com)

United States Stamp Society (USSS) [www.usstamps.org](http://www.usstamps.org)

U.S. Philatelic Classics Society (USPCS) [www.uspcs.org](http://www.uspcs.org)

U.S. Possessions Philatelic Society (USPPS) [www.uspps.net](http://www.uspps.net)

### \$1,000 Sponsors

American Association of Philatelic Exhibitors (AAPE) [www.aape.org](http://www.aape.org)

British North American Philatelic Society (BNAPS) [www.bnaps.org](http://www.bnaps.org)

Collectors Club, NY (CCNY) [www.collectorsclub.org](http://www.collectorsclub.org)

International Philippine Philatelic Society (IPPS) [www.theipps.info](http://www.theipps.info)

International Society for Japanese Philately (ISJP) [www.isjp.org](http://www.isjp.org)

Mexico Elmhurst Philatelic Society International (MEPSI) [www.mepsi.org](http://www.mepsi.org)

Precancel Stamp Society (PSS) [www.precancel.com](http://www.precancel.com)

Scouts on Stamps Society, International (SOSSI) [www.sossi.org](http://www.sossi.org)

Society for Hungarian Philately (SHP) [www.hungarianphilately.org](http://www.hungarianphilately.org)

The Perfins Club (PC) [www.perfins.org](http://www.perfins.org)

### \$500 Sponsors

American Air Mail Society (AAMS) [www.americaairmailssociety.org](http://www.americaairmailssociety.org)

Canal Zone Study Group (CZSG) [www.canalzonestudygroup.com](http://www.canalzonestudygroup.com)

Colombia-Panama Philatelic Study Group (COPAPHIL) [www.copaphil.org](http://www.copaphil.org)

Ebony Society of Philatelic Events & Reflections (ESPER) [www.esperstamps.org](http://www.esperstamps.org)

Falkland Islands Philatelic Study Group (FIPSG) [www.fipsg.org.uk](http://www.fipsg.org.uk)

Metropolitan Air Post Society (MAPS) [www.mapsnewyork.org/home.html](http://www.mapsnewyork.org/home.html)

Ottoman and Near Eastern Philatelic Society (ONEPS) [www.oneps.net](http://www.oneps.net)

Plate Number Coil Collectors Club (PNC3) [pnc3.org](http://pnc3.org)

Society of Israel Philatelists (SIP) [www.israelstamps.com](http://www.israelstamps.com)

### \$250 Sponsors

International Association of Olympic Collectors [www.iacolympic.org](http://www.iacolympic.org)

Carriers and Locals Society (CLS) [www.pennypost.org](http://www.pennypost.org)

Cuban Philatelic Society of America (CPSA) [www.cuhapsa.com](http://www.cuhapsa.com)

France & Colonies Philatelic Society (FCPS) [www.fcps.org.uk](http://www.fcps.org.uk)

India Study Circle (ISC) [www.indiastudycircle.org](http://www.indiastudycircle.org)

International Society of Worldwide Stamp Collectors (ISWSC) [www.iswsc.org](http://www.iswsc.org)

Iran Philatelic Study Circle (IPSC) [www.iranphilately.org](http://www.iranphilately.org)

Military Postal History Society (MPHS) [www.militaryphs.org](http://www.militaryphs.org)

National Duck Stamp Collectors Society (NDSCS) [www.ndscs.org](http://www.ndscs.org)

Pitcairn Islands Study Group (PISG) [www.pisg.net](http://www.pisg.net)

Rossica Society of Russian Philately (ROSSICA) [rossica.org](http://rossica.org)

St. Helena, Ascension and Tristan da Cunha Philatelic Society (SHATPS) [www.shatps.org](http://www.shatps.org)

Sports Philatelists International (SPI) [sportsstamps.org](http://sportsstamps.org)

Universal Ship Cancellation Society (USCS) [www.uscs.org](http://www.uscs.org)



**NY  
2016**



# Publicity soon followed, and continued right up to show time using a variety of media.



Click to listen

**Free admission to see Hamilton!**

...And thousands of other famous people, places and things. Pick up a free stamp passport and take a walk around the amazing world of stamp collecting.

- A great family event
- World famous stamp rarities
- Free stamps for kids and adults
- Free admission

World Stamp Show-NY 2016  
Javits Center  
May 28-June 4

More info: [ny2016.org](http://ny2016.org)

**The whole world will be here.**

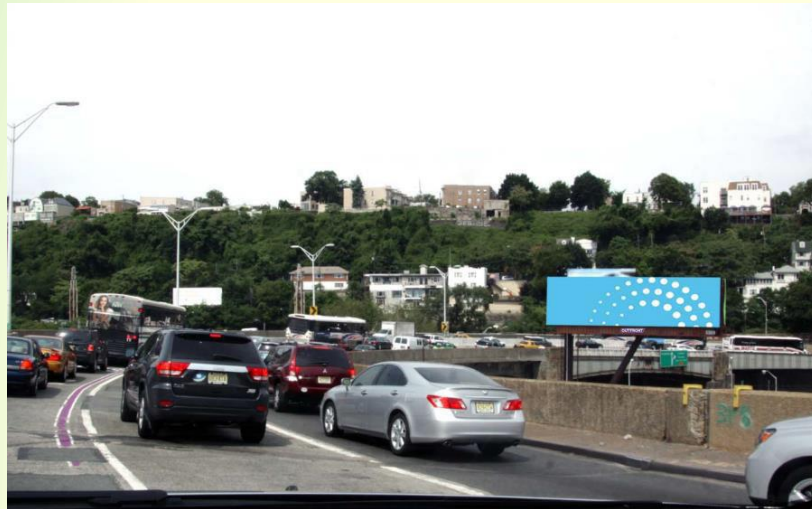
ALL YOUR FAVORITE STAMPS ARE COMING—so step right up! Whether you're a beginning collector or a longtime dealer, a casual accumulator or an advanced philatelist, it's not too early to begin making plans to attend World Stamp Show-NY2016, the once-in-a-decade event happening May 28-June 4, 2016.

You'll see world-famous, seldom-exhibited rarities in the Court of Honor. Enjoy eight days face-to-face with hundreds of dealers from the U.S. and around the world. Peruse thousands of frames of fascinating competitive exhibits on all aspects of philately. Visit dozens of postal administrations—led by the United States Postal Service—with hundreds of exciting new issues. Bid in several major auctions packed with deals and steals. Get exclusive offers on classic-to-modern stamps and postal history and find special surprises to delight even the most jaded showgoer!

Hotel rooms at special World Stamp Show rates are now available near the Javits Center in midtown Manhattan, but hurry—they won't last long. If you're a dealer, reserve your booth now. Great locations are still available at a variety of prices. Everybody's going to be here!

Full details at [ny2016.org](http://ny2016.org) or by calling 844-WSS-2016 (that's toll-free: 844-977-2016).

Sponsored by  
UNITED STATES POSTAL SERVICE®



# Dealers came forward from around the world.

**GREECE** BOOTH  
A. KARAMITSOS  
International Auction House  
1344

Est. 1856  
**STANLEY GIBBONS**  
1051

**HONG KONG** BOOTH  
interasia  
auctions  
833

**SOUTH AFRICA** BOOTH  
DREA  
1360

**NETHERLANDS** BOOTH  
CORINPHILA  
VEILINGEN  
729

**SPAIN** BOOTH  
SOLER y LLACH  
subastas internacionales, s.a.  
1364

Canada Stamp Finder  
1070  
Marianne Stephens-Hewitt

**SWEDEN** BOOTH  
Postiljonen  
960

**ITALY** BOOTH  
BOLAFFI  
1957

**RUSSIA** BOOTH  
MN  
1467

**BELGIUM** BOOTH  
delcampe  
860

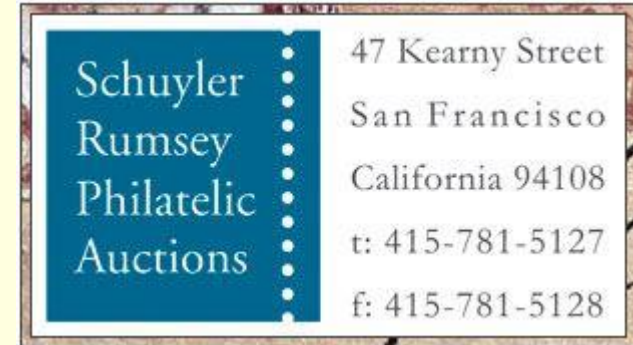
**FRANCE** BOOTH  
BEHR  
737

**NEW ZEALAND** BOOTH  
MOWBRAY COLLECTABLES  
1056





# International auction houses signed up.



# Well over 1,400 exhibitors applied to compete through their national commissioners.





# A jury was appointed.



**Honorary President**  
Tay Peng Hian RDP,  
Singapore



**Honorary Chairman**  
Robert Odenweller RDP,  
USA



**Jury Secretary**  
Stephen Reinhard,  
USA



**Jury President**  
Peter McCann RDP,  
USA

## Jury Vice Presidents



Bernard Jimenez, France



Koichi Sato RDP, Japan



Charles J.G. Verge

## Jury members



Fernando Aranaiz,  
Spain



Mark Banchik,  
USA



Gary Brown,  
Australia



Chen Yu-An,  
Chinese Taipei



Prakh Chirakiti,  
Thailand



Nancy Clark,  
USA



Santiago Cruz,  
Colombia



Luis Diaz,  
Costa Rica



Dila Eaton,  
Paraguay



Lars Engelbrecht RDP,  
Denmark Post Accreditation



Darrell Ertzberger,  
USA



Malcolm Groom,  
Australia



Jonas Hallstrom RDP,  
Sweden



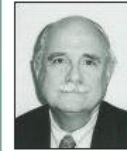
Christopher Harman  
RDP, UK



Suwito Harsono,  
Indonesia



Michael Ho, Chinese  
Taipei



John Hotchner,  
USA



Alexander Ilyushin  
RDP, Russia



Muhammed Javaid,  
UAE



Jørgen Jørgensen RDP,  
Denmark



Damian Laege,  
Germany



Lee Bok-Kyu,  
Korea



Ronald Leshner,  
USA



Frank (Zhiwei) Li,  
China



Klerman Lopes,  
Brazil



José Lorenzo,  
Cuba



Jean-Pierre Magne,  
France



Jukka Mäkinen,  
Finland



James Mazepa RDP,  
USA



Thomas Mazza,  
USA



José Ramon Moreno,  
Spain



Yigal Nathaniel,  
Israel



Tono Putranto,  
Indonesia



Andres Schlichter,  
Argentina



Barry Scott,  
New Zealand



## Apprentices



Neil Cronje, South  
Africa



Konstantin Filobok,  
Russia



Kathryn Johnson,  
USA



Chang Chien Pin,  
Chinese Taipei



David Petruzelli,  
USA



Yamil Kouri,  
USA



Spas Panchev,  
Bulgaria



Igor Piric,  
Slovenia

## Expert Group



# The meetings were scheduled.

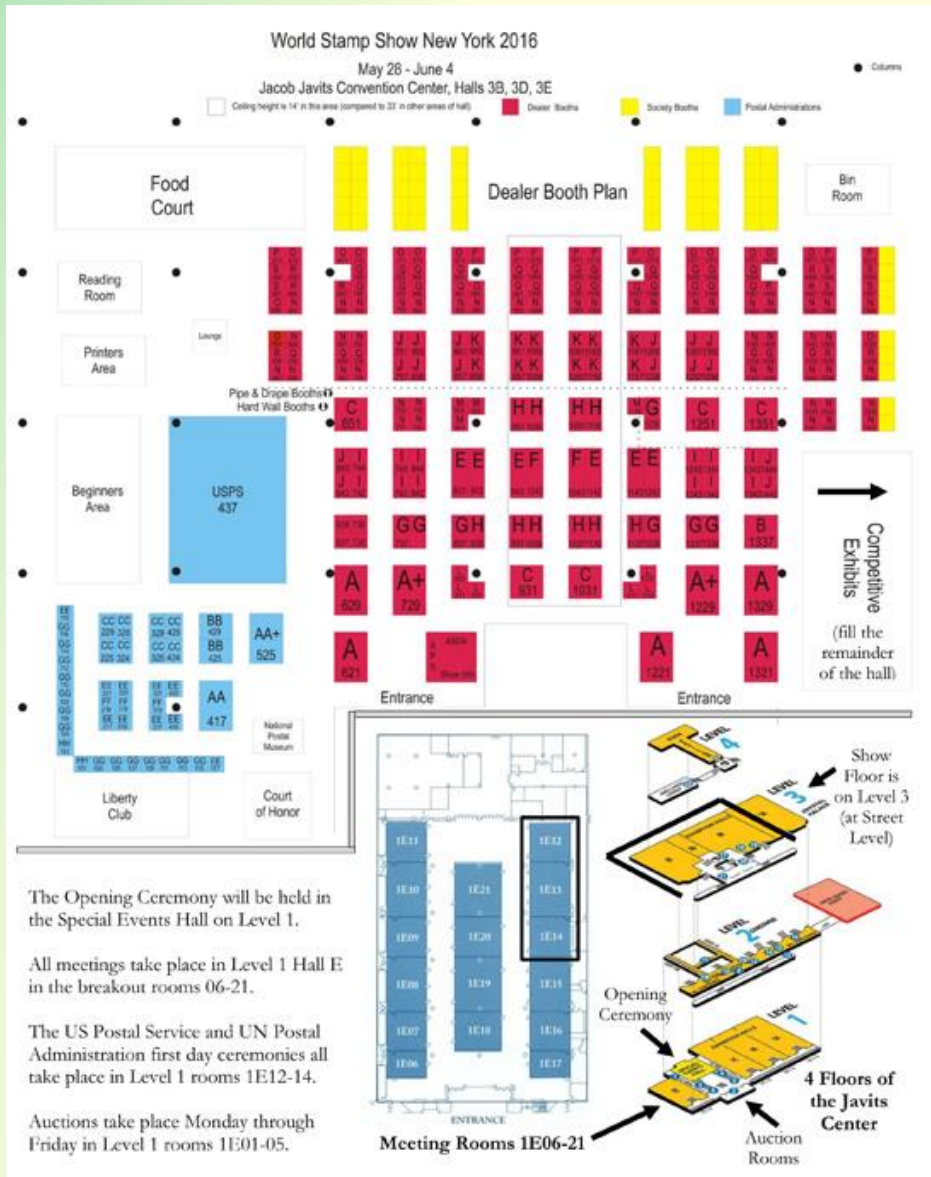
Image / Logo	Date & Time	Event	Location	More Info
	5/28/2016 9:15AM to 10:20AM	Opening Ceremony	Special Events Hall	
	5/28/2016 10:00AM to 2:00PM	Stamp Collecting 101	Meeting Room 1E18	<a href="#">View Detail</a>
	5/28/2016 11:00AM to 12:00PM	USPS "World of Stamps Day" First Day of Issue: World Stamp Show-NY 2016 (intaglio designs) - 2 stamps USPS	Meeting Room 1E12-14	
	5/28/2016 11:00AM to 12:00PM	Art Cover Exchange Meeting	Meeting Room 1E16	

Hall & Room Assignments, World Stamp Show-NY 2016, Day 1 Saturday, May 28	Theme: "The World of Stamps Day"	1pm-12:00	2pm-4:00	4pm-7:00	8pm-11:00
1E18A Theaterpodium/ front table/ projector/ 200 cap	World Stamp Show-NY 2016 Social Media Followers - Gathering				Book presentation by Kibler, Conzatti and the Global Philatelic Network
1E18B Theaterpodium/ front table/ exhibit frame & projector/ 100 cap	AAMS - Membership Meeting		AAMS - Metropolitan Airpost Society Unit - "Ways to Collect Zepolein Mail"		Metropolitan Air Post Society - "Gerhard Zucker's project for pocket mail over Niagara Falls in 1906 - Visionary, Fantasy or Fraud?"
1E18C Theaterpodium/ front table/ projector/ 200 cap	United States Stamp Society - Release Ceremony for the Encyclopedia of United States Stamps and Stamp Collecting, Second Edition by Jay Sigelman		United States Stamp Society - Prexies and World War II by Jeff Sigelman		Colonial American Study Circle - Meeting
1E18D Theaterpodium/ front table/ 200 cap			China Stamp Society - Annual Membership Meeting		
1E18E Theaterpodium/ front table/ projector/ 100 cap			Russia Society of Russian Philately - "Connecting the Dots: Soviet Dotted Date Stamps of the '20s and '30s and Classicist Mail Surveillance"		
1E14 Reserved for First Day Ceremonies		USPS First Day Ceremony - World Stamp Show	USPS First Day Ceremony - UN Peacekeepers		
1E16 Theaterpodium/ front table/ projector/ 200 cap					How Technology & the Internet are Changing Philately
1E16 Classroom 30 cap		Art Cover Exchange - General Meeting		Carriers and Locals Society - Board Meeting	Carriers & Locals Society - Open Meeting
1E17 Classroom 40 cap					
1E17 Classroom/ projector/ exhibit frame/ 85 cap		Stamp Collecting 101 by Don Chenoweth - registration required			Meter Stamp Society - My Search for Examples of Metered Mail from the Experimental Era, 1880-1923
1E18 Theaterpodium/ front table/ projector/ 200 cap					Meter Stamp Society - General Meeting
1E18 Theaterpodium/ front table/ projector/ 200 cap					Meter Stamp Society - Alternate Postage
1E19 Theaterpodium/ front table/ projector/ 200 cap					
1E20 Classroom/ projector/ 85 cap		Data-Driven Stamp Collecting			
1E21 Theaterpodium/ front table/ 200 cap					Women Exhibitors - Membership Meeting
1E21 Theaterpodium/ front table/ 200 cap					19th's Signature, Not a Child - Suggestions for the New Collector by Michael Bloom
Special Events Hall		9:15 AM Opening Ceremony 10:15-11:00			
7:00-11:00 PM	Collector's Club and Philatelic Foundation Grand Opening and Awards Dinner, Bryant Park Grill, 35 West 40th Street. Contact: www.etsyberg, info@collectorsclub.org, 212-683-6800, pre-reservations welcome				





# The layout was finalized.

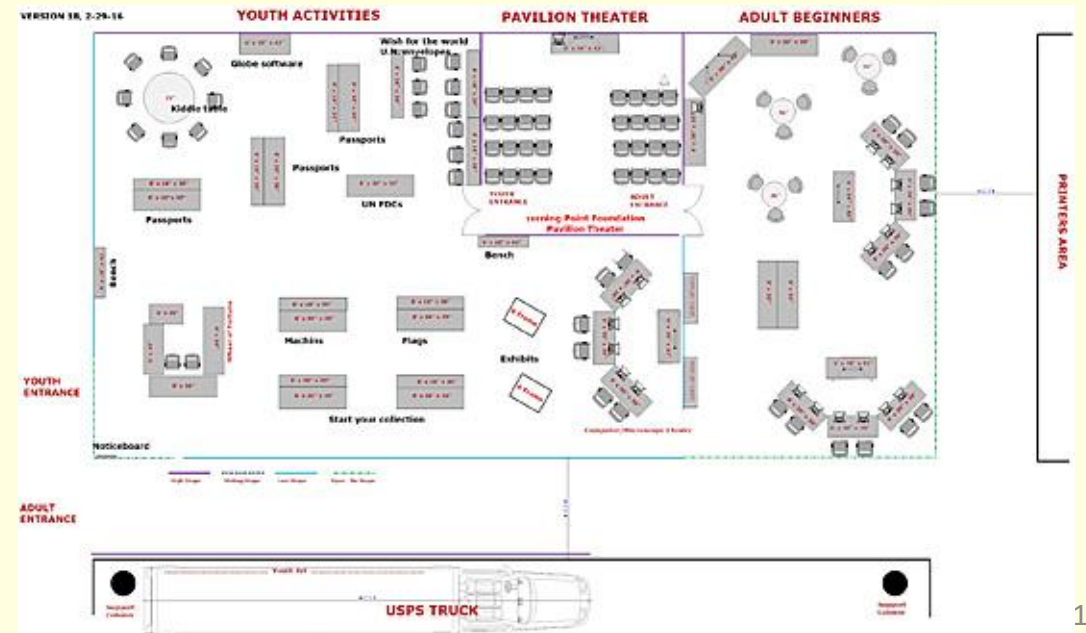
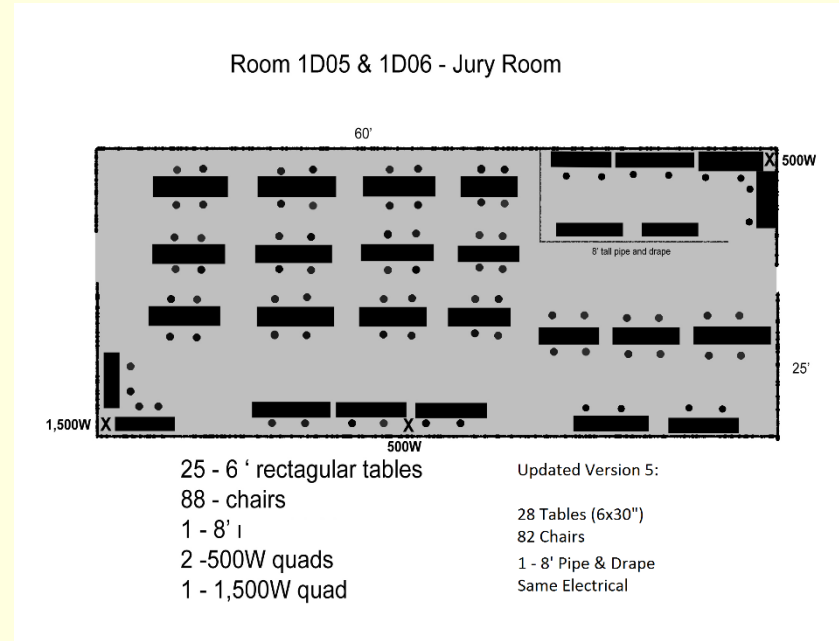


The Opening Ceremony will be held in the Special Events Hall on Level 1.

All meetings take place in Level 1 Hall E in the breakout rooms 06-21.

The US Postal Service and UN Postal Administration first day ceremonies all take place in Level 1 rooms 1E12-14.

Auctions take place Monday through Friday in Level 1 rooms 1E01-05.



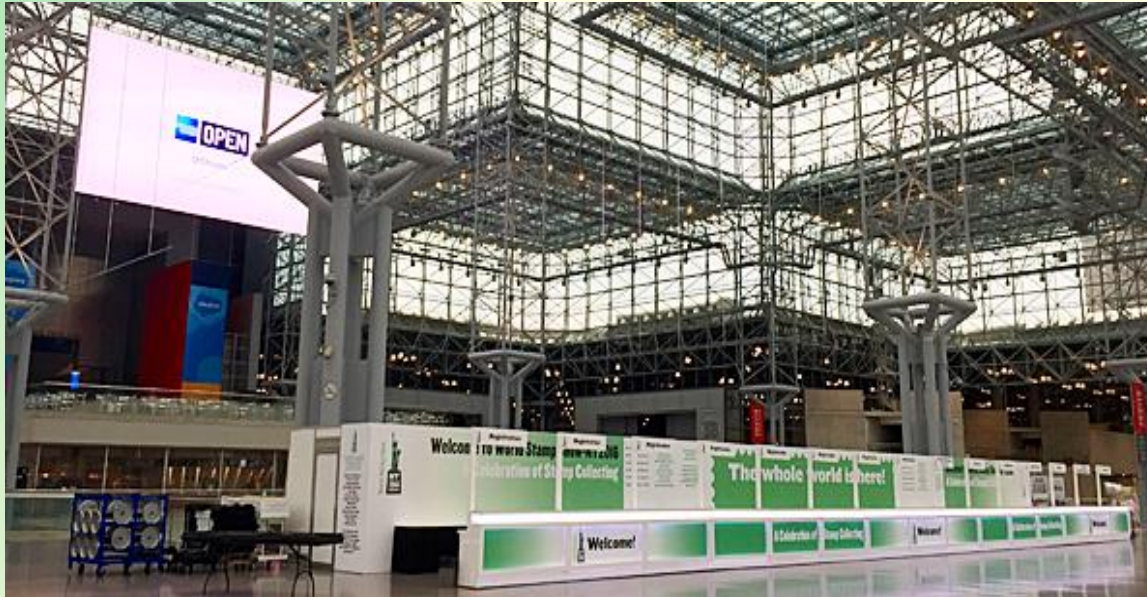


# The Javits Center.



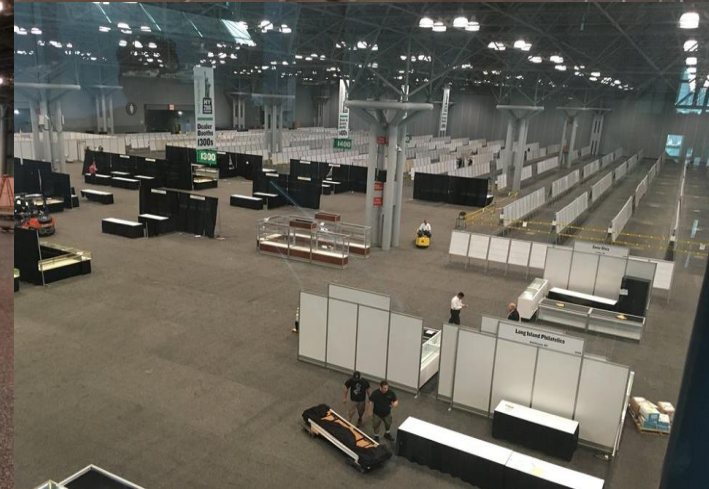
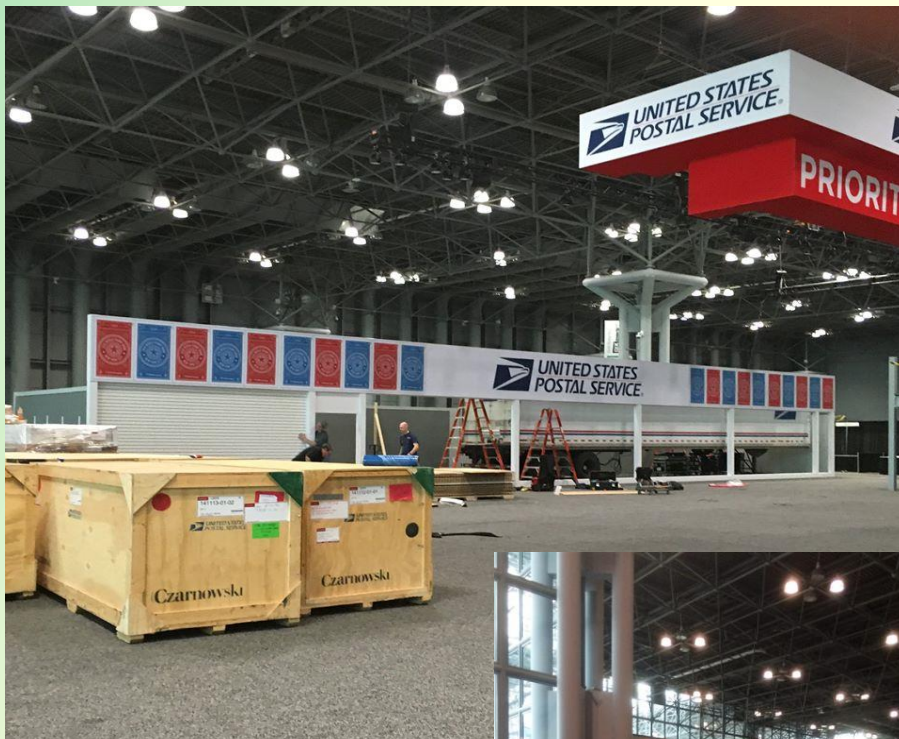


# The lobby was prepared.





# The hall was readied.



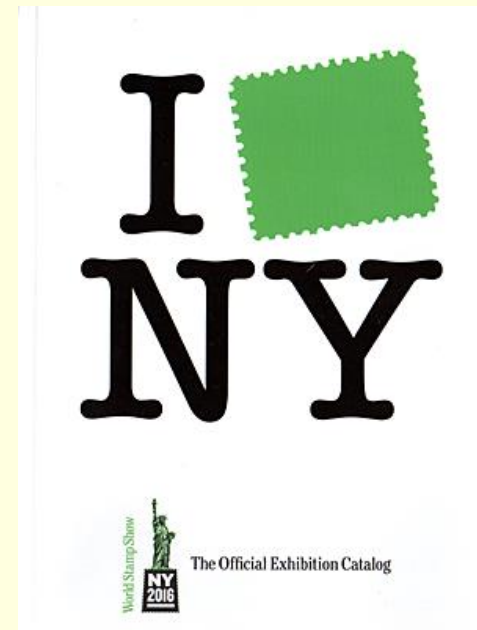
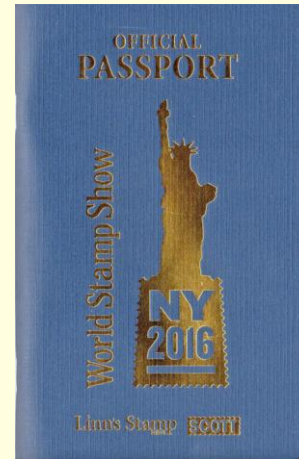
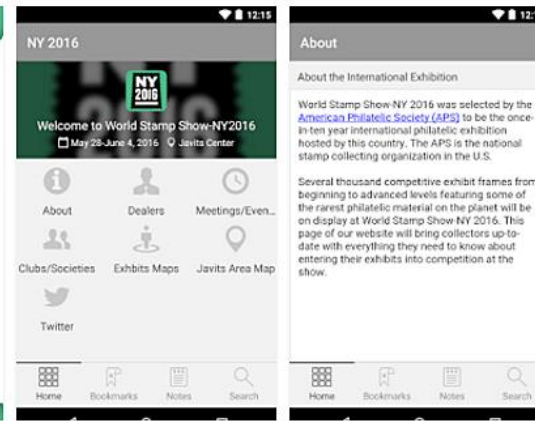
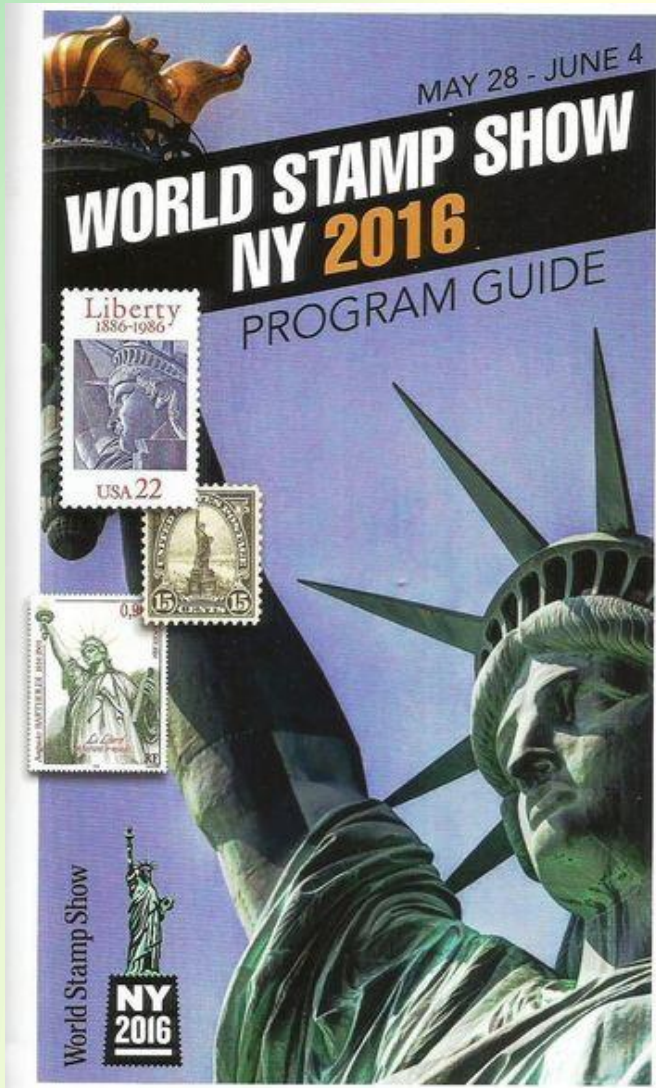
World Stamp Show



**NY**  
**2016**



# The publications were printed; the app online.



**I NY**

The Official Exhibition Catalog

**Don't Miss the Official Exhibition Catalog**

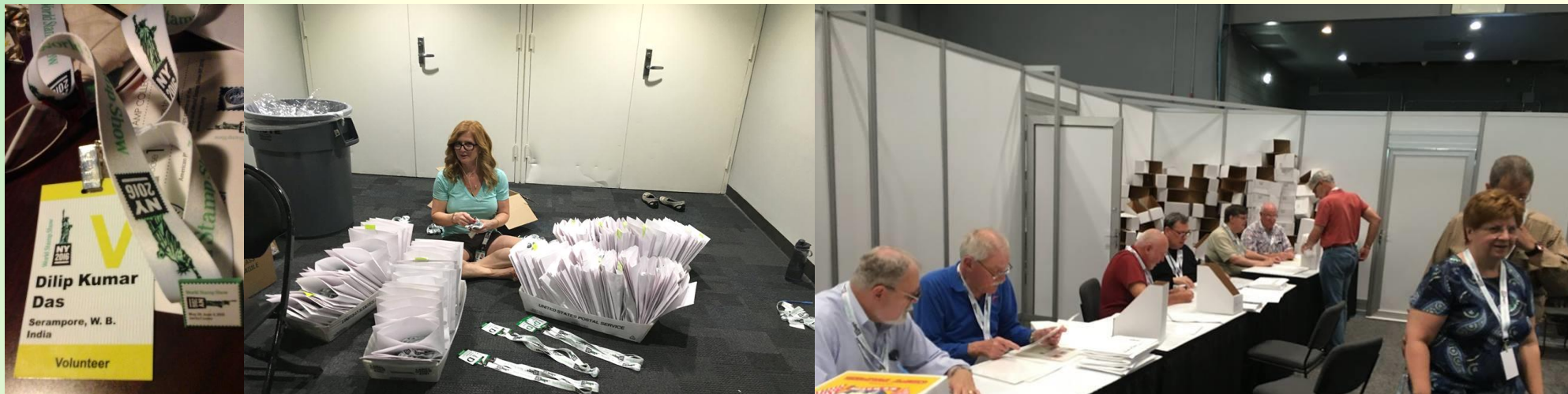
**\$10**

**incl. NYS sales tax**





# The volunteers came.



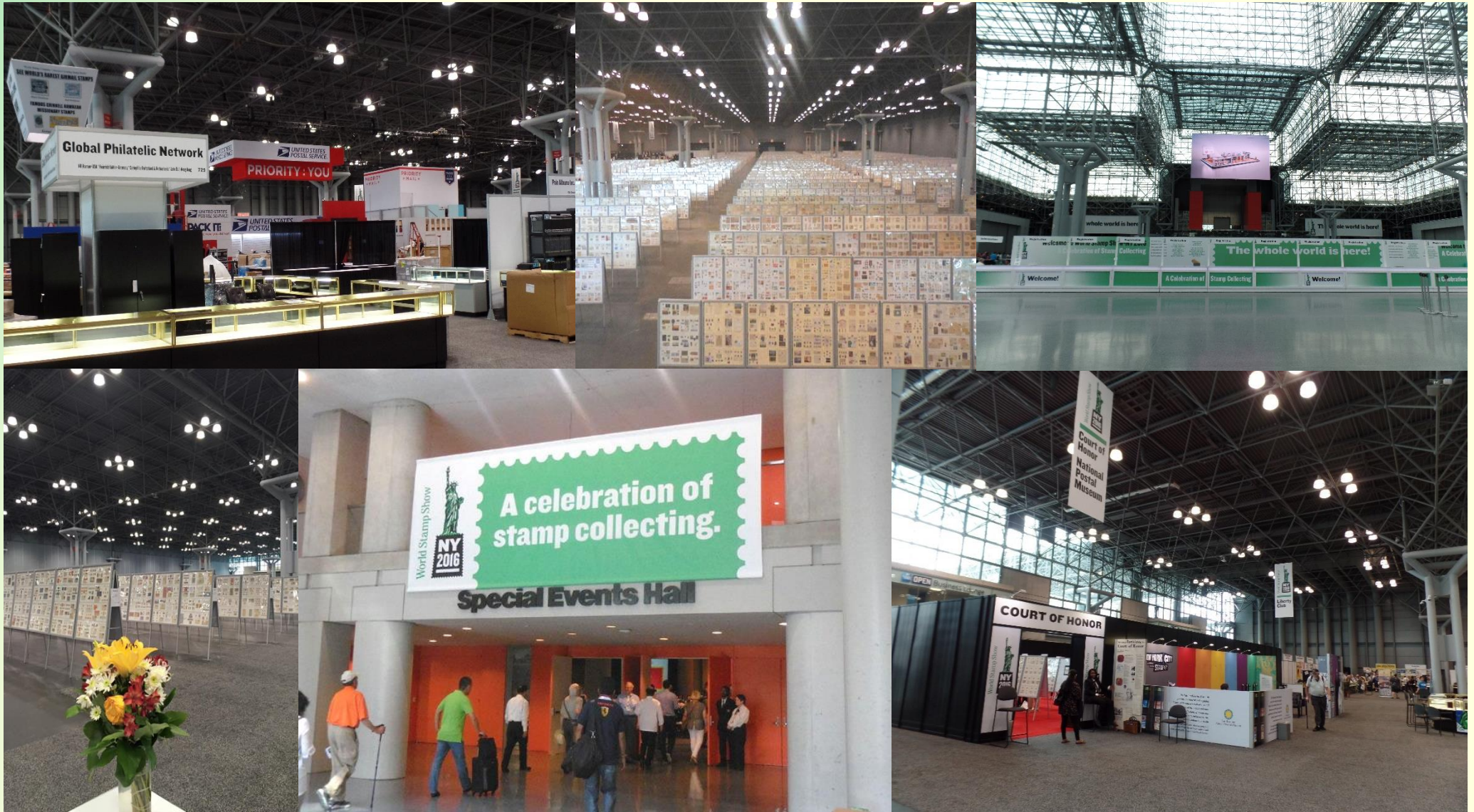


# The Show Office and Press Room were busy.





# The stage was set.





# The Opening Ceremony was well attended.



## Program

Opening Ceremony  
Special Events Hall – Javits Center  
Saturday, May 28, 2016 – 9:15am

WELCOME  
Jamie Gough

PRESENTATION OF COLORS  
United States Navy Color Guard

STAR SPANGLED BANNER  
MFC Dan Smith, *U.S. Navy*

IN HONOR OF FLEET WEEK  
Vice Admiral Joseph P. Mulloy,  
*U.S. Navy Deputy Chief of Naval Operations for Integration  
of Capabilities and Resources*

Admiral Thomas B. Fargo, *U.S. Navy (Ret.)*

UNITED STATES POSTAL SERVICE  
James Cochrane

WORLD STAMP SHOW-NY 2016  
Wade Saadi

GREETINGS FROM OVERSEAS  
Stuart Weitzman

RIBBON CUTTING  
The Platform Guests

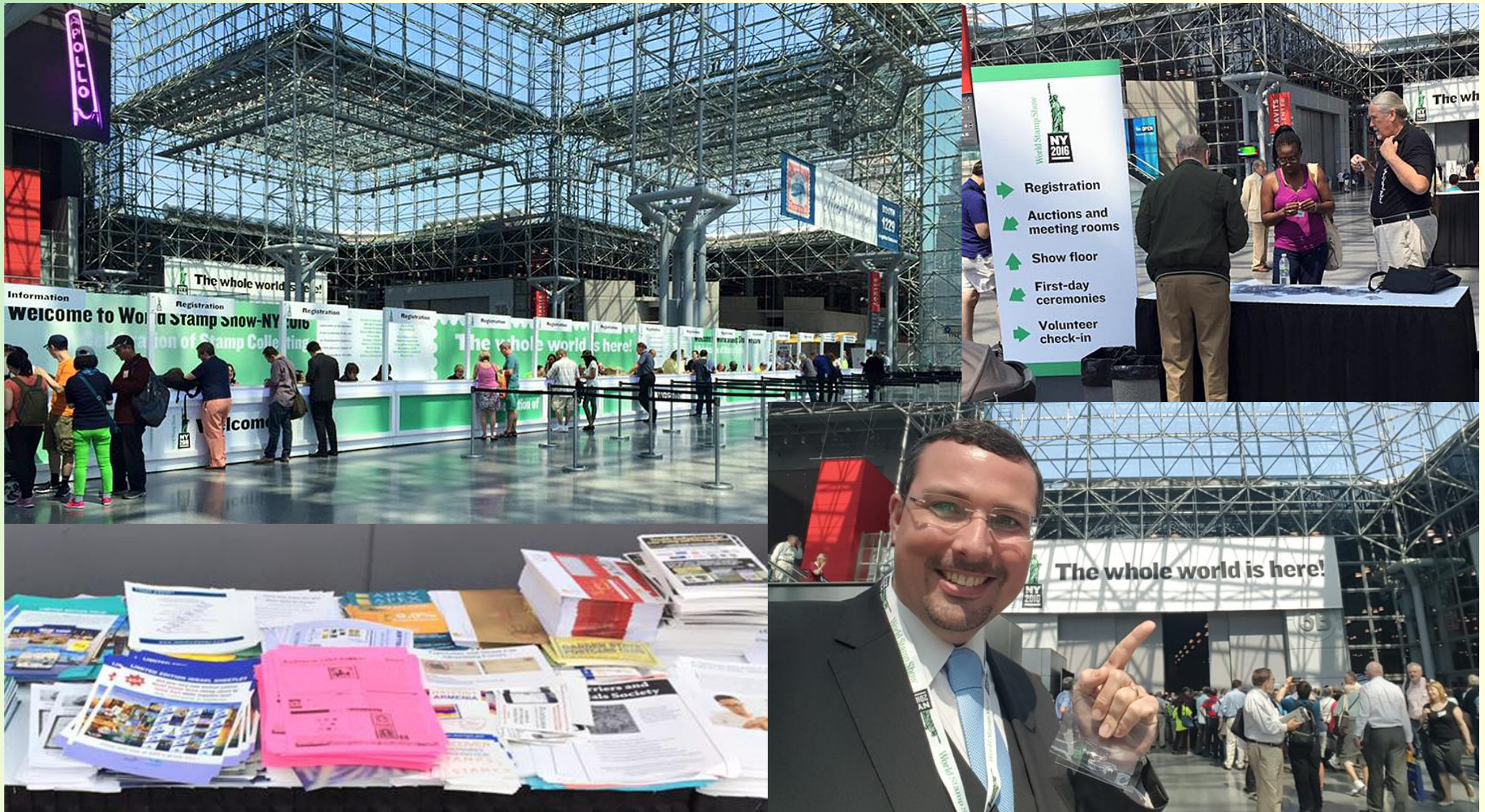


# And then the curtain opened...





...and an hour later, the doors opened, too.





# A tour among the dealers.





# Lots of them.



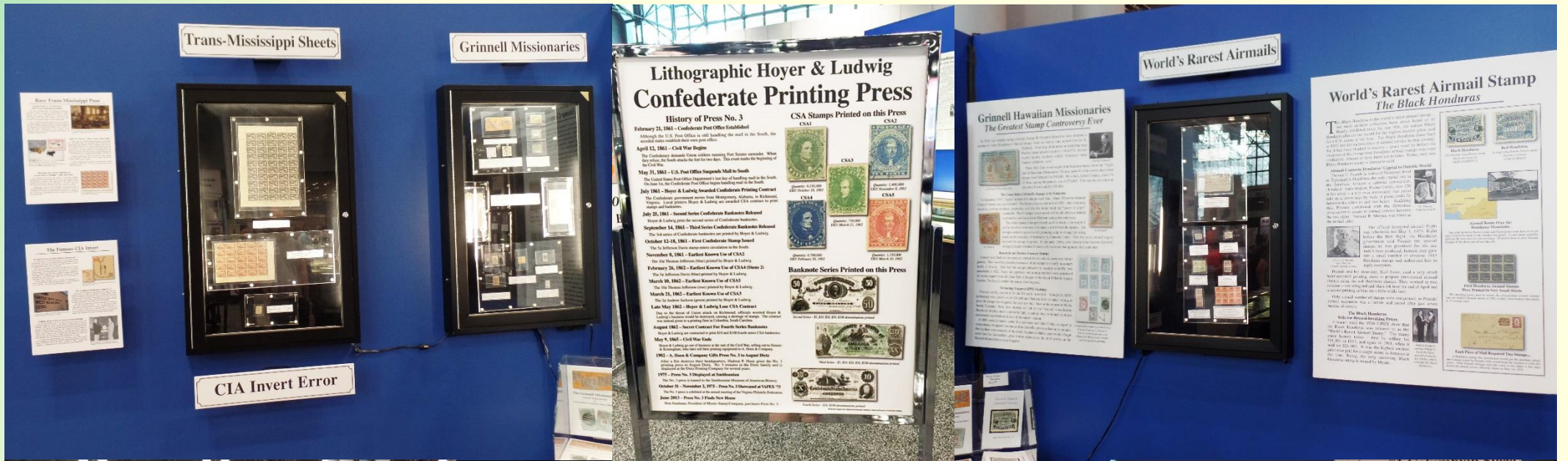


# With a variety of booth types, sizes and layouts.





# Mystic's booth with an assortment of gems.





# USPS had the largest display on the floor.





# The many cancels offered were in great demand.





# APS sold official cachets and offered souvenirs.





# Postal administrations booths were colorful.





# More than 70 countries were represented.





# Filling passports was a popular activity.



**Armenia**  
 Location: Western Asia, south of Russia  
 Language: Armenian  
 Population: 3,036,000 (est. 2015)  
 First Stamp: 1919

**Aruba**  
 Location: West Indies, north of Venezuela  
 Language: Papiamentu  
 Population: 112,000 (est. 2015)  
 First Stamp: 1986

**Australia**  
 Location: Oceania, south of Indonesia  
 Language: English  
 Population: 24,000,000 (est. 2016)  
 First Stamp: 1913

**Austria**  
 Location: Central Europe  
 Language: German  
 Population: 8,670,000 (est. 2015)  
 First Stamp: 1850

**Canada**  
 Location: Northern part of North America  
 Language: English  
 Population: 35,100,000 (est. July 2015)  
 First Stamp: 1851

**Cape Verde**  
 Location: Atlantic Ocean, west of Senegal  
 Language: Portuguese  
 Population: 546,000 (est. July 2015)  
 First Stamp: 1877

**France**  
 Location: Western Europe  
 Language: French  
 Population: 66,554,000 (est. 2015)  
 First Stamp: 1849

**The Gambia**  
 Location: West coast of Africa  
 Language: English  
 Population: 1,968,000 (est. 2015)  
 First Stamp: 1869

**Mozambique**  
 Location: Southeast coast of Africa  
 Language: Portuguese  
 Population: 25,300,000 (est. 2015)  
 First Stamp: 1877

**Netherlands**  
 Location: Northwest Europe on North Sea  
 Language: Dutch  
 Population: 16,950,000  
 First Stamp: 1852

**Solomon Islands**  
 Location: West Pacific Ocean, east of Papua  
 Language: English, Melanesian pidgin  
 Population: 622,000 (est. 2015)  
 First Stamp: 1907

**Tahiti, French Polynesia**  
 Location: South Pacific Ocean  
 Language: French  
 Population: 283,000 (est. 2015)  
 First Stamp: 1882

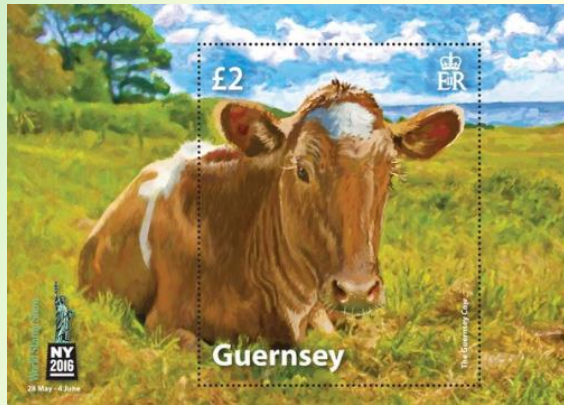
**United Nations**  
 Location: New York, N.Y. (headquarters)  
 Language: English, French, Arabic, Chinese, Russian  
 Population: 193 member states  
 First Stamp: 1951

**United States**  
 Location: North America  
 Language: English  
 Population: 321,369,000 (est. 2015)  
 First Stamp: 1847





# Plenty of WSS-NY new issues to choose from.



World Stamp Show





# USPS FDOI- 05/28 WSS Folio

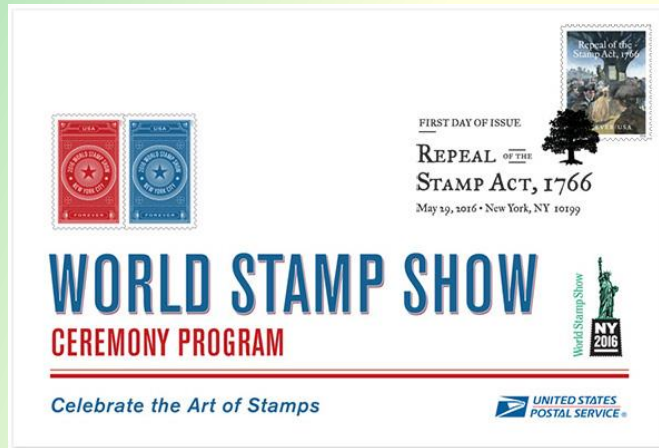








# USPS FDOI- 05/29 Repeal of the Stamp Act





# IGPC FDOI- 05/29 Tri-Country Skyline





# USPS FDOI- 05/30 Service Crosses



HONORING EXTRAORDINARY HEROISM:  
**THE SERVICE CROSS MEDALS**  
First Day of Issue ★ May 30, 2016 ★ New York, NY 10259

**WORLD STAMP SHOW**  
CEREMONY PROGRAM

World Stamp Show  
**NY 2016**

Celebrate the Art of Stamps

UNITED STATES POSTAL SERVICE





# UNPA FDOI- 05/30 UNPA 65<sup>th</sup> Anniversary





# USPS FDOI- 05/31 Planets/Pluto Explored

Earth  
Pluto

FIRST DAY OF ISSUE  
VIEWS OF OUR PLANETS  
MAY 31, 2016 - NEW YORK, NY 10199

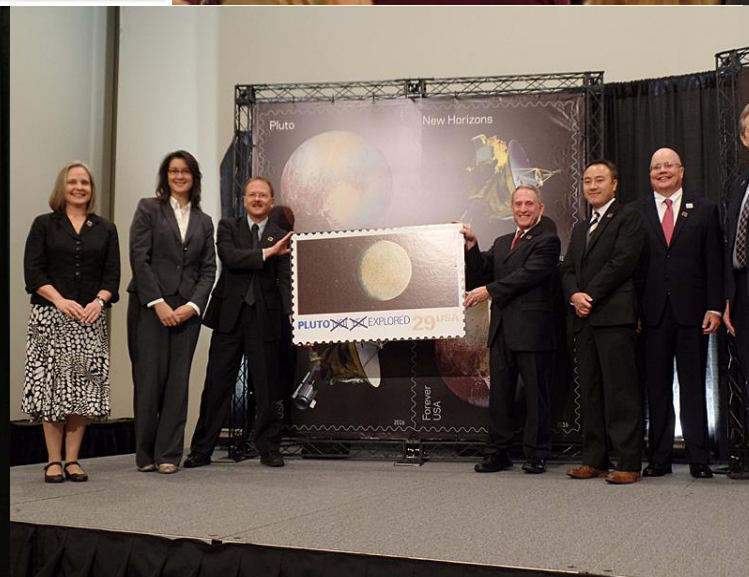
FIRST DAY OF ISSUE  
PLUTO-EXPLORED!  
MAY 31, 2016  
NEW YORK, NY 10199

**WORLD STAMP SHOW**  
CEREMONY PROGRAM

World Stamp Show NY 2016

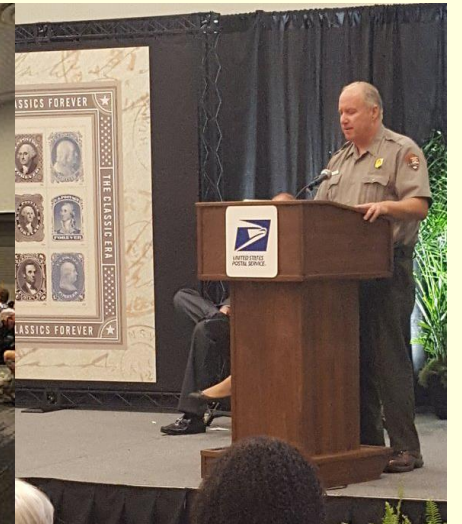
Celebrate the Art of Stamps

UNITED STATES POSTAL SERVICE



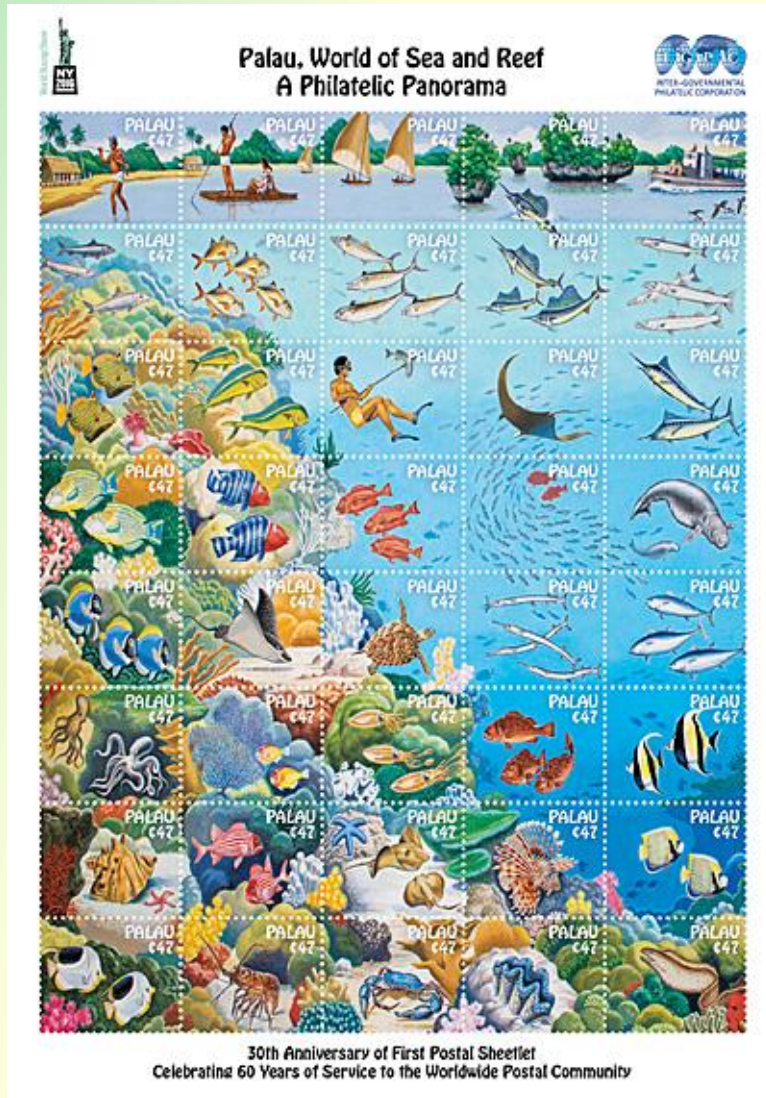


# USPS FDOI- 06/01 Classics



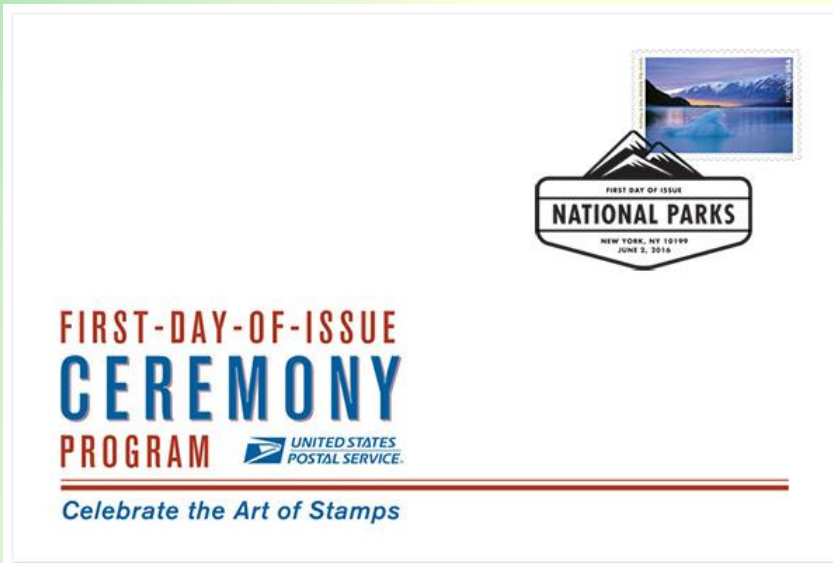


# IGPA FDOI- 06/01 Palau 30<sup>th</sup> Anniversary





# USPS FDOI- 06/02 National Parks





# USPS FDOI- 06/03 Colorful Celebrations



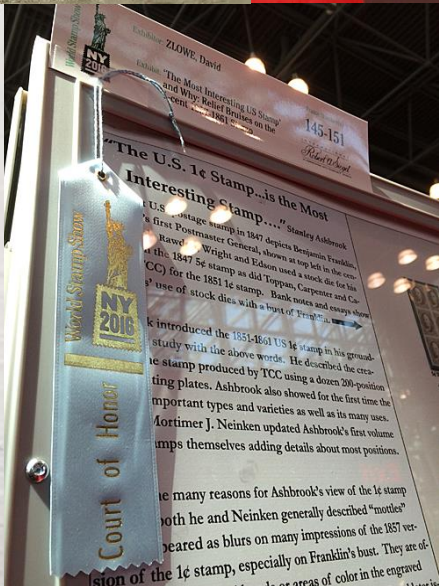


# The “Welcome to Stamp Collecting” Pavilion.



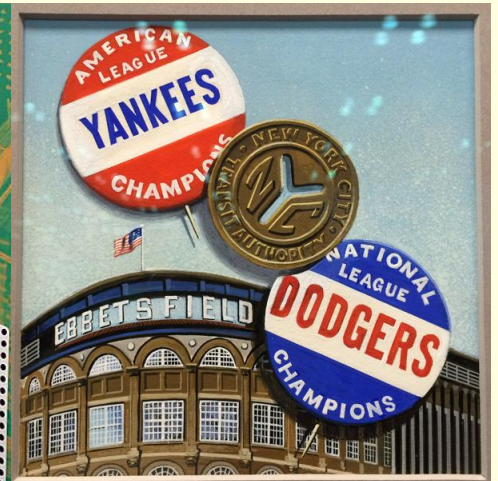


# The Court of Honor.





# The Smithsonian National Postal Museum area.



**BASEBALL**

**World Series Rivals**  
depicts the crosstown rivalry between the Yankees and the Dodgers. During the 1950s, the Yankees played in eight World Series, including four against the Dodgers, who beat the Yankees once. The transit token is a reminder that these intra-city match-ups were known as "subway series."

**Additional Stamps In The Baseball Category:**

- Shot Heard 'Round the World  
*Celebrate the Century: 1950s*
- Babe Ruth  
*Celebrate the Century: 1920s*
- Joe DiMaggio  
*Major League Baseball All-Stars issue*
- Jackie Robinson  
*Black Heritage Series*

**World Series Rivals**  
*Celebrate the Century: 1950s*  
Medium  
paper, gouache, graphite  
Illustrator  
Dean Ellis (1920-2009)  
Art Director  
Howard Paine  
First Day of Issue  
February 18, 1999



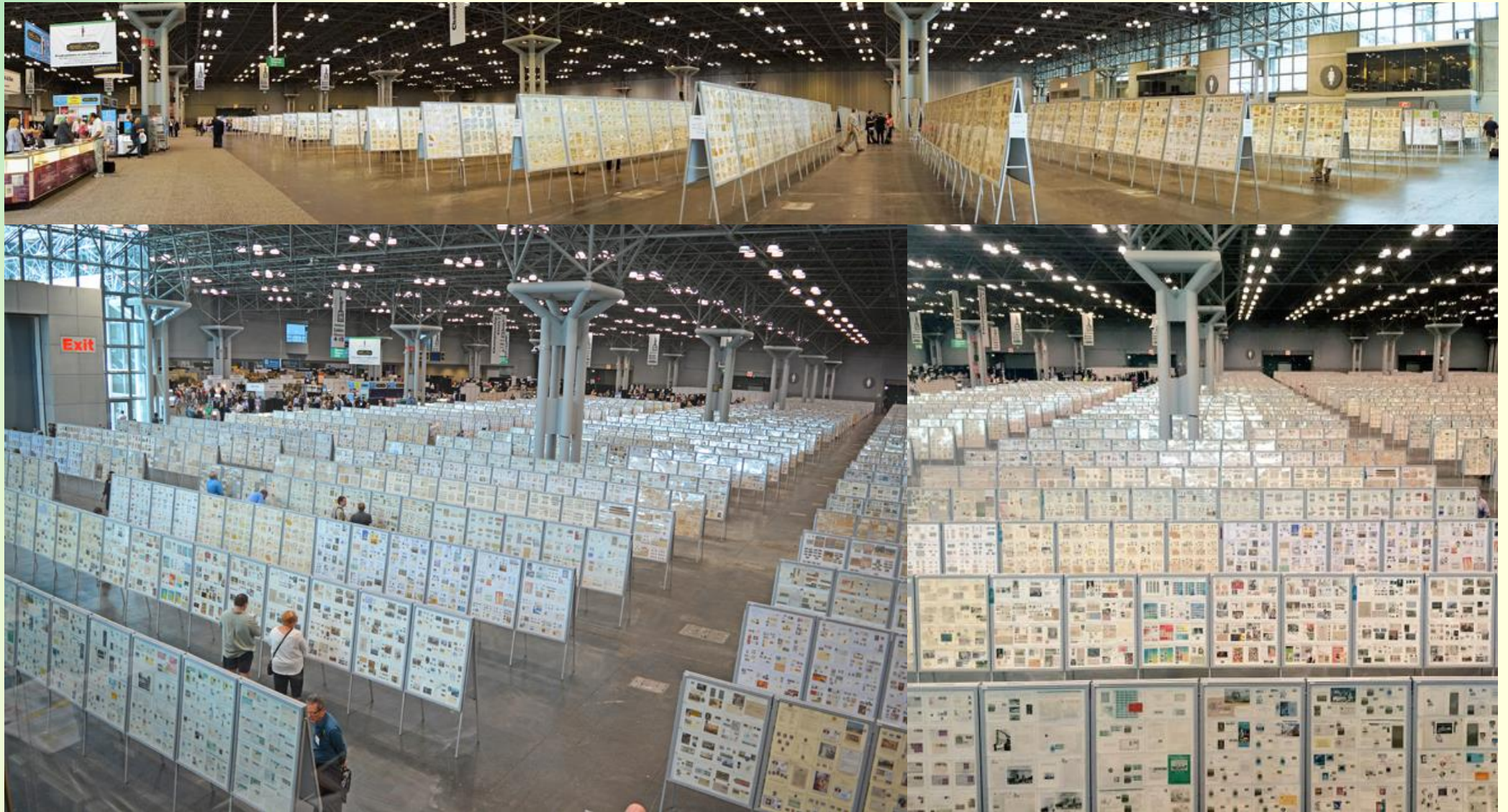


# The Reading Room. (Depository of Literature competition entries.)





# On to the 4,146 competitive frames...





...making up 706 competitive exhibits.



World Stamp Show



NY  
2016

《集邮》杂志



# Non-competitive exhibits were on display, too.



Exhibitor: ROD, Steven J. Frame Number(s)  
**369-373**

Exhibit: Every Ten Years for the Past 100:  
Welcome to World Stamp Show-  
NY2016

INTERNATIONAL  
*Robert A. Siegel*  
AN ASSOCIATION WITH CHARLES F. SHREVE

Every Ten Years  
for the past 100:  
Welcome to World  
Stamp Show  
- NY 2016!

It is so exciting to welcome you to our show today. We hope your visit will be chock full of awesome discoveries and many memorable experiences!

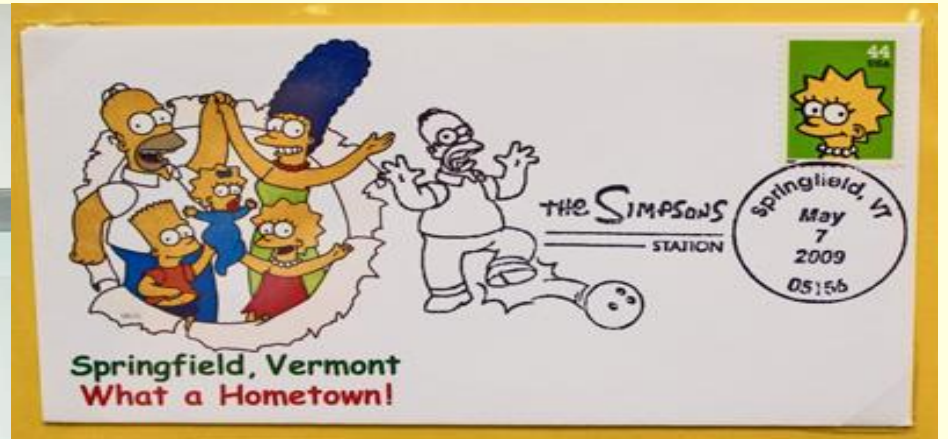
This is the 11<sup>th</sup> International Philatelic Exhibition (IPEX) to be held in the USA since 1913, each staged by a group of very dedicated volunteers. More than 500 volunteers have made our Show a reality.

These five frames were assembled from a large collection of IPEX memorabilia to give you a tiny glimpse into these ten shows.

While there were a number of people present today who were at FIPEX in 1956, we would love to meet anyone who was present at CIPEX in 1947!

We invite you to enjoy a quick walk down USA-IPEX memory lane.

ENJOY WORLD STAMP SHOW - NY  
2016!





# The Special Prizes were diverse and plentiful.

## World Stamp Show NY 2016 Special Prizes





More than 100 were awarded by the jury.





# The Palmares dinner, Thursday, June 2.





# A small sampling of the many Society booths.





# Linn's issued three special editions at the show.



## World Stamp Show-NY 2016 opening ceremony offers tribute to America's military in celebration of 28th Fleet Week New York

By Michael Beadie  
The opening ceremony for World Stamp Show-NY 2016 began at 9:15 a.m. on Saturday, May 28, with a patriotic flourish in honor of the 28th Fleet Week New York, the celebration of United States sea services taking place in New York City the same week at the stamp show.

The Special Events Hall at the Javits Center where the show is being held was filled with visitors from all over the world anticipating the opening of the fabulous once-every-10-years show.



A United States Navy Color Guard presents the U.S. flag during the opening ceremony for World Stamp Show NY 2016 May 28 at the Jacob K. Javits Convention Center in New York City.

overseas visitors present in the hall. The national anthem was sung by MFC Don Smith of the U.S. Navy, with the presentation of colors by the U.S. Navy Color Guard.

Remarks in honor of Fleet Week were made by Vice Admiral Joseph P. Mulloy, and Admiral Thomas B. Fargo, who told the assembled crowd he was a collector. "A showbox collector" he said, whose interests included not only stamps, but baseball cards and the world anticipating the opening of the fabulous once-every-10-years show.

Master of ceremonies Jamie Gough described the presentation of colors and the singing of The Star Spangled Banner for the benefit of the many



Although he could not attend the opening day festivities for World Stamp Show NY 2016, President Barack Obama wished show participants "warm regards for an outstanding event."

**Visit Linn's Stamp News at Booth #951**  
for special subscription rates and a chance to win a Scott catalogue every day of the show!

May 29, 2016



## Recovered Jenny Invert from McCoy block was found in Northern Ireland

By Michael Beadie  
The red and blue stamp shows the "blue Jenny" airplane in the middle of the design printed upside down. It's considered the most famous of all United States stamp errors, perhaps the most famous U.S. stamp of all.

And this particular inverted Jenny. It turns out, had been missing for more than 50 years. It was once part of an intact block of four known to collectors as the McCoy block, which was stolen from its exhibition frame in 1955 during the American Philatelic Society convention in Norfolk, Va.

But to most people, a stamp is just a stamp. And it appears that Keelin's grandfather, who like Keelin lived in Northern Ireland, had no knowledge of this stamp's story either.

"He never really pointed out to what it was," Keelin said. "He didn't mention, 'Oh, by the way, there's a stamp in there that's so rare there's only a hundred!'"

The Jenny invert was in a simple stock card, stuck inside an envelope along with an old and odd letter that seemingly described a stamp transaction that took place in New York in the 1960s.

The 1918 24c airmail error that shows the "blue Jenny" airplane in the middle of the design printed upside down, it's considered the most famous of all United States stamp errors, perhaps the most famous U.S. stamp of all.

And this particular inverted Jenny. It turns out, had been missing for more than 50 years. It was once part of an intact block of four known to collectors as the McCoy block, which was stolen from its exhibition frame in 1955 during the American Philatelic Society convention in Norfolk, Va.

But to most people, a stamp is just a stamp. And it appears that Keelin's grandfather, who like Keelin lived in Northern Ireland, had no knowledge of this stamp's story either.

"He never really pointed out to what it was," Keelin said. "He didn't mention, 'Oh, by the way, there's a stamp in there that's so rare there's only a hundred!'"

The Jenny invert was in a simple stock card, stuck inside an envelope along with an old and odd letter that seemingly described a stamp transaction that took place in New York in the 1960s.



Kevin O'Neill from Northern Ireland smiles while holding an inverted Jenny stamp offered for sale by the American Philatelic Society. O'Neill found a real inverted Jenny, a rare United States error stamp missing for more than six decades, in a box of items left to him by his late grandfather in 2001.

**Visit Linn's Stamp News at Booth #951**  
for special subscription rates and a chance to win a Scott catalogue every day of the show!

May 30, 2016



## Finest graded United States 1918 Jenny Invert error tops \$1.35 million during Robert A. Siegel auction May 31 at World Stamp Show-NY 2016

By Matthew Healey  
New York Correspondent  
"One million, one hundred seventy-five thousand dollars," announced Scott R. Trepel, barely concealing his delight as he brought down the gavel on America's next top stamp.



Scott Trepel, president of Robert A. Siegel Auction Galleries in New York City, takes bids on the finest graded Jenny Invert from the original pane of 100 discovered by William T. Robey. At this point during the May 31 sale at World Stamp Show NY 2016, the high bid had reached \$1 million, as shown on the video screen at right.

**Visit Linn's Stamp News at Booth #951**  
for special subscription rates and a chance to win a Scott catalogue every day of the show!

June 2, 2016

Adding in the 15 percent commission that Siegel levies on all lots brought the final realization to a whopping \$1,351,250.

The stamp is considered the finest graded example, having received a grade of extra fine-superb 95 from Professional Stamp Experts. The price represented a record result not only for the 24c misprint, listed as Scott C34, but for any United States stamp, surpassing the previous record set by an inverted Jenny, in 2007, by nearly 50 percent.

The last auction result for this particular example, position 58 from the original Stamp Show NY 2016, the high bid had reached \$1 million, as shown on the video screen at right.

sheet was \$377,500, realized in 2005. All of these sales were also by Trepel.

Trepel had spared no expense to promote this auction, which he believed had the potential to break records.

He went so far as to organize the bringing of an actual Curtis Jenny aircraft to the Javits Center, site of the once-a-decade World Stamp Show-NY 2016, and persuaded the granddaughter of the error stamp's original discoverer, William T. Robey, to attend the sale as an honored guest.





# Auction fever lasted through 6 daily sessions.



## Auction Today

Schuyler  
Rumsey  
Philatelic  
Auctions

Wed., June 1

New York 2016 Sale  
10 am

Robert L. Markovits:  
U.S. Special Delivery  
5 pm





# The star? Jenny #58, perhaps. \$1.175 million. (plus the 15% buyer's premium for a total of \$1,351,250 - May 31 Siegel auction)



Click to watch the hammer fall.



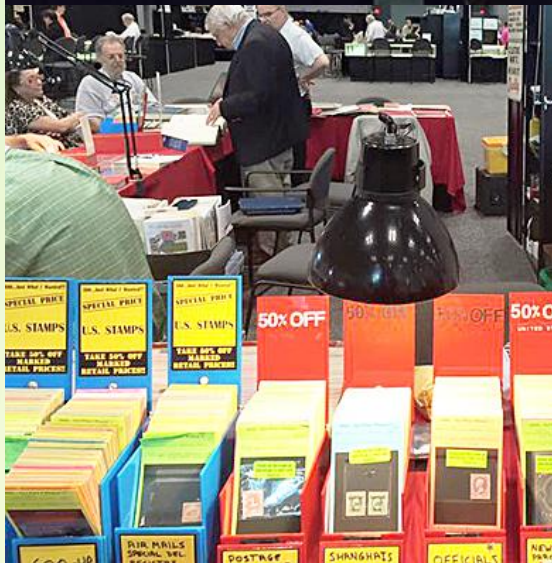
# Or did Jenny #76's return "steal" the show?

Missing since 1955, this Jenny was found by Keelin O'Neill of Northern Ireland and recovered on Thursday, June 2.





# Did you buy any of these at the show?




**Scott No. C3a**  
**24-cent Airpost Issue of 1918**  
**Carmine Rose and Blue, Inverted Center, Position 36**

Without question, the "inverted Jenny" is one of the most popular and well-known stamps in all of philately. Since the discovery of a single sheet of 100 stamps almost a century ago, collectors and non-collectors alike have revered this American rarity. This stamp, from position 36 in the original sheet, retains its original freshness and brilliant colors, is lightly hinged and completely sound.

*Ex Hessel, Wenger, Windsor*

1996, 2008 Philatelic Foundation Certificates

**\$450,000**







**NY  
2016**

Did you join us? We hope you did!  
Thanks to everyone for making the  
show a huge success.



*Plans are already underway for the next US  
international exhibition in Boston in 2026.*