

U.S.  
Philatelic  
Trivia

By Larry Rausch

For the RPA

July, 2018

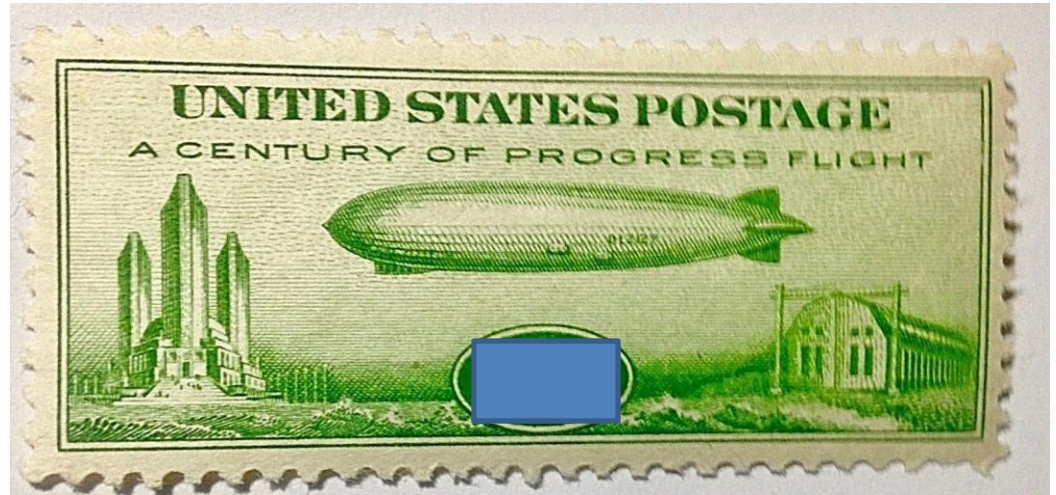
1. What is the denomination of the “Baby Zeppelin” stamp.

A. 60 cents

B. 40 cents

C. 50 cents

D. 30 cents



2. In what year did the United Nations celebrate its 25<sup>th</sup> anniversary

A. 1970

B. 1968

C. 1971

D. 1969



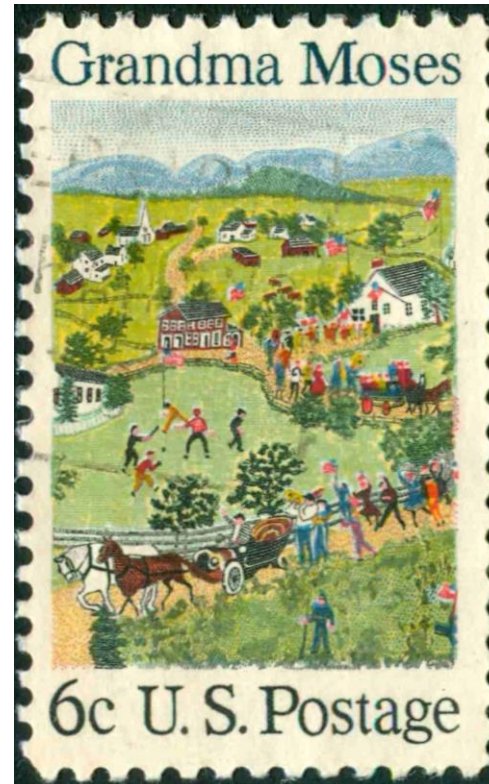
**3. In which year was the Grandma Moses stamp issued?**

**A. 1972**

**B. 1969**

**C. 1974**

**D. 1968**



4. In what year was the 8<sup>th</sup> Winter Olympics held?

A. 1960

B. 1956

C. 1964

D. 1968



5. How many stamps are in the 1943-44 Overrun Countries issue?

A. 12

B. 11

C. 14

D. 13



6. What is the denomination of the 1925 Woodrow Wilson stamp?

- A. 15 cent
- B. 18 cent
- C. 17 cent
- D. 19 cent



7. In what year was the first Love stamp issued?

A. 1968

B. 1972

C. 1969

D. 1970





8. In what year was the Virginia Dare stamp issued?

A. 1934

B. 1939

C. 1938

D. 1937



9. In the 1920 Pilgrim Tercentenary issue, what denomination bears the picture of the Mayflower?

A. 1 cent

B. 2 cent

C. 5 cent



**10. What town held the 1898 Trans-Mississippi fair?**

**A. Saint Louis, Missouri**

**B. Cincinnati, Ohio**

**C. Chicago, Illinois**

**D. Omaha, Nebraska**



**11. What color is the 1934 “Whistler’s Mother stamp**

**A. Green**

**B. Purple**

**C. Red**

**D. Blue**

12. How many stamps are in the 1961 Credo issue?

- A. 4
- B. 6
- C. 5
- D. 3



13. What is the denomination of the 1981 "C" stamp

A. 15 cents

B. 22 cents

C. 20 cents

D. 17 cents



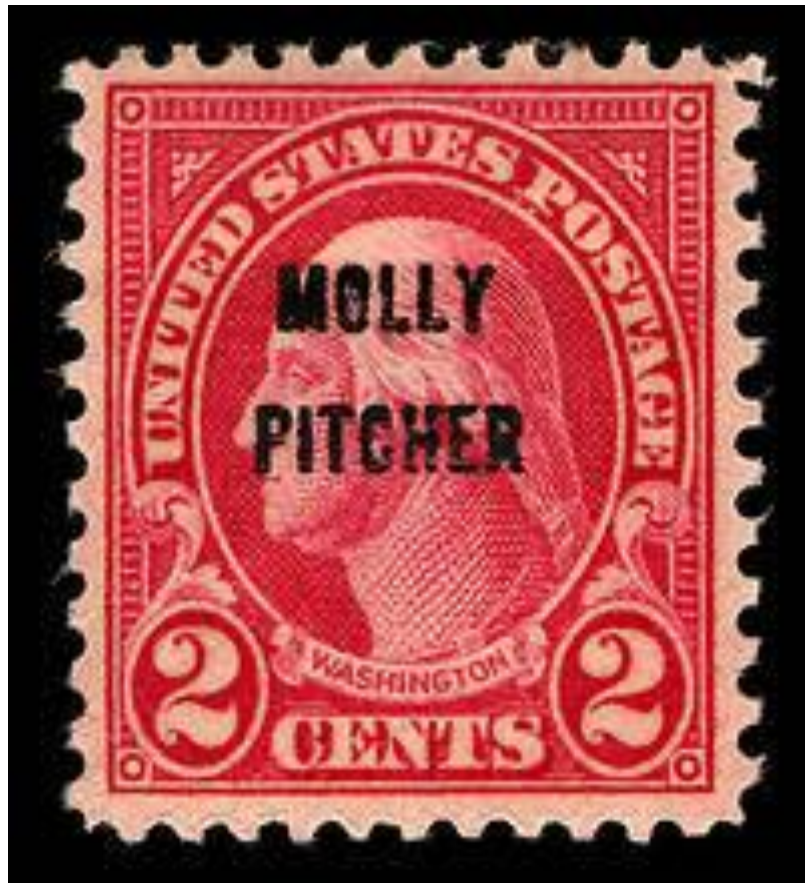
14. In what year did the “Molly Pitcher” overprint occur?

A. 1928

B. 1926

C. 1930

D. 1932



**15. On what type of US stamp was an airplane first depicted?**

**A. Postage Due**

**B. Air Mail**

**C. Parcel Post**

**D. Special Delivery**



**16. What type of Bird is on a 1970 Natural History Issue Stamp?**

**A. Turkey**

**B. Condor**

**C. Cardinal**

**D. Eagle**

**17. What type of car was the first to appear on a 1901 U.S. stamp**

**A. Steam**

**B. Electric**

**C. Gasoline**

18. In what year was Lindbergh's transatlantic flight?

- A. 1927
- B. 1925
- C. 1931
- D. 1928



19. What town was the 1901 Pan-American Expo held?

A. Philadelphia, Pennsylvania

B. Chicago, Illinois

C. Saint Louis, Missouri

D. Buffalo, New York



20. How many stamps are in the 1939 Famous American issue?

A. 28

B. 30

C. 35

D. 32



**21. In what state is Wheatland, President Buchanan's home?**

- A. Vermont**
- B. Pennsylvania**
- C. North Carolina**
- D. New York**



22. How many stamps are in the 1934 Byrd souvenir sheet?

- A. 6
- B. 10
- C. 8
- D. 25



23. The Apollo-Soyuz space mission took place in what year

- A. 1975
- B. 1976
- C. 1970
- D. 1972





24. How many denominations of the 1913 Parcel Post postage due stamps were issued?

A. 6

B. 3

C. 5

D. 4



25. Bonus question what state was I, Larry Rausch, born in?

- A. Illinois
- B. Wisconsin
- C. Minnesota
- D. Iowa



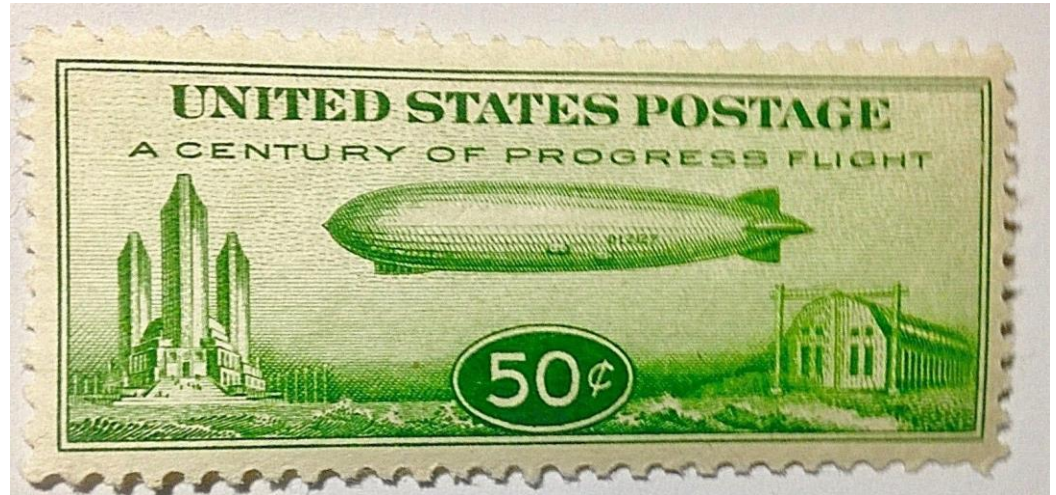
1. What is the denomination of the “Baby Zeppelin” stamp.

A. 60 cents

B. 40 cents

C. 50 cents

D. 30 cents



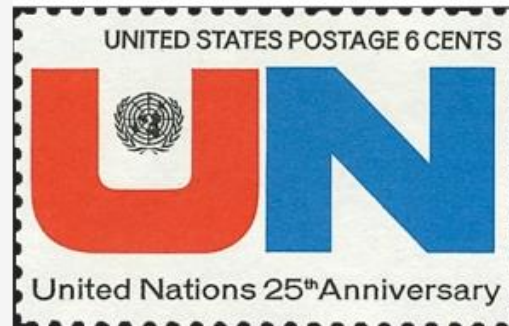
2. In what year did the United Nations celebrate its 25<sup>th</sup> anniversary

**A. 1970**

B. 1968

C. 1971

D. 1969



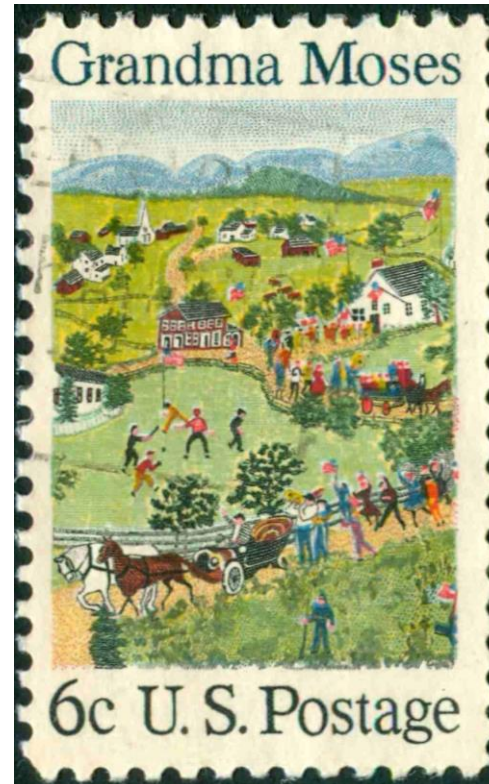
3. In which year was the Grandma Moses stamp issued?

A. 1972

**B. 1969**

C. 1974

D. 1968



4. In what year was the 8<sup>th</sup> Winter Olympics held?

- A. 1960
- B. 1956
- C. 1964
- D. 1968



5. How many stamps are in the 1943-44 Overrun Countries issue?

A. 12

B. 11

C. 14

**D. 13**



6. What is the denomination of the 1925 Woodrow Wilson stamp?

A. 15 cent

B. 18 cent

C. 17 cent

D. 19 cent





7. In what year was the first Love stamp issued?

A.1968

**B. 1972**

C.1969

D.1970



8. In what year was the Virginia Dare stamp issued?

A. 1934

B. 1939

C. 1938

D. 1937



9. In the 1920 Pilgrim Tercentenary issue, what denomination bears the picture of the Mayflower?

- A. 1 cent
- B. 2 cent
- C. 5 cent



## 10. What town held the 1898 Trans-Mississippi fair?

A. Saint Louis, Missouri

B. Cincinnati, Ohio

C. Chicago, Illinois

D. Omaha, Nebraska



11. What color is the 1934 “Whistler’s Mother stamp

A. Green

B. Purple

C. Red

D. Blue



## 12. How many stamps are in the 1961 Credo issue?

A. 4

**B. 6**

C. 5

D. 3



13. What is the denomination of the 1981 "C" stamp

A. 15 cents

B. 22 cents

C. 20 cents

D. 17 cents



14. In what year did the “Molly Pitcher” overprint occur?

- A. 1928
- B. 1926
- C. 1930
- D. 1932





15. On what type of US stamp was an airplane first depicted?

A. Postage Due

B. Air Mail

C. Parcel Post

D. Special Delivery



16. What type of Bird is on a 1970 Natural History Issue Stamp?

- A. Turkey
- B. Condor
- C. Cardinal
- D. Eagle



17. What type of car was the first to appear on a 1901 U.S. stamp

A. Steam

**B. Electric**

C. Gasoline



18. In what year was Lindbergh's transatlantic flight?

**A.** 1927

B. 1925

C. 1931

D. 1928



19. What town was the 1901 Pan-American Expo held?

A. Philadelphia, Pennsylvania

B. Chicago, Illinois

C. Saint Louis, Missouri

D. Buffalo, New York



20. How many stamps are in the 1939 Famous American issue?

A. 28

B. 30

**C. 35**

D. 32



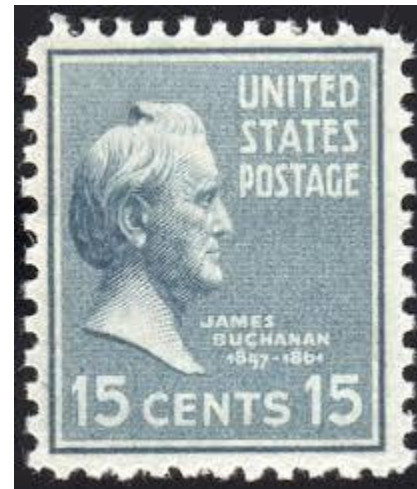
21. In what state is Wheatland, President Buchanan's home?

A. Vermont

**B. Pennsylvania**

C. North Carolina

D. New York



22. How many stamps are in the 1934 Byrd souvenir sheet?

- A. 6
- B. 10
- C. 8
- D. 25





23. The Apollo-Soyuz space mission took place in what year

- A. 1975
- B. 1976
- C. 1970
- D. 1972



24. How many denominations of the 1913 Parcel Post postage due stamps were issued?

A. 6

B. 3

C. 5

D. 4



25. Bonus question what state was I, Larry Rausch, born in?

A. Illinois

B. Wisconsin

C. Minnesota

D. Iowa

