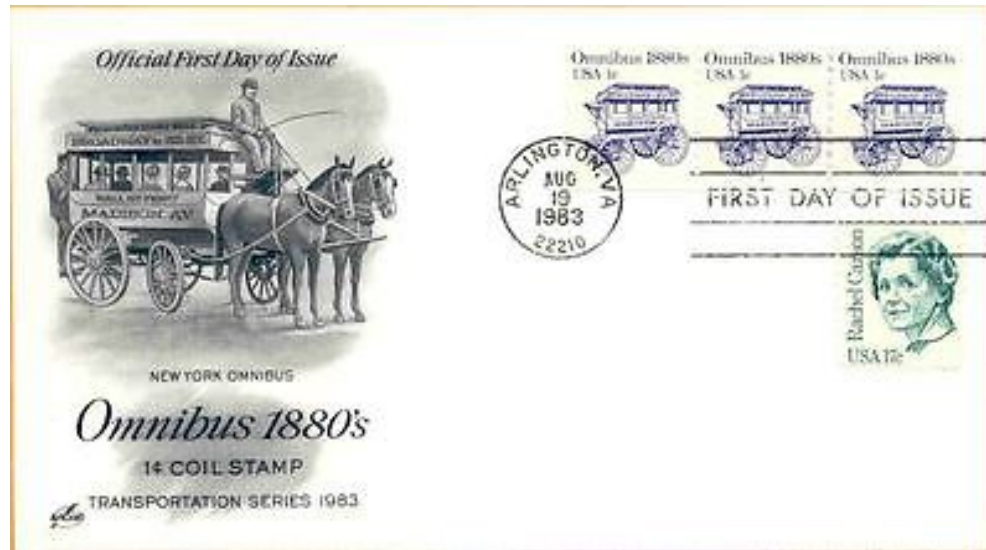


The U.S. Postal TRANSPORTATION ISSUE of 1981-1995



By Terry Blum

5/6/2015

The U. S. Postal TRANSPORTATION ISSUE of 1981-1995

- This issue was released over a span of 15-years.
- They were all coil stamps.
- On them were images of vintage and antique vehicles dating as far back as the 1770's and as new as 1933.
- Denominations included full and decimal fractions of a cent as well as a full dollar.
- *Question #1: How many “basic” designs were there?*

51

- In all, there were 51 different vehicles depicted, but there is a total of 60 different Scott Numbers issued to cover the set with all variations.

The U. S. Postal TRANSPORTATION ISSUE of 1981-1995

- Question #2: What was the oldest vehicle depicted?

The U. S. Postal TRANSPORTATION ISSUE of 1981-1995

- It was the “Carreta 1770s”, a 2-wheel pull cart.



The U. S. Postal TRANSPORTATION ISSUE of 1981-1995

- Question #3: What was the newest vehicle depicted?

The U. S. Postal TRANSPORTATION ISSUE of 1981-1995

- It was the “Stutz Bearcat 1933”.



The U. S. Postal TRANSPORTATION ISSUE of 1981-1995

- There were 30 *basic* designs with full cent denominations. [1, 2, 3, 4, 5, 6, 10, 11, 12, 13, 14, 15, 17, 18, 20, 21, 23, 25, & 32 cents for a total of 19.]
- There were 21 basic designs with fractional cent denominations. [3.4, 4.9, 5.2, 5.3, 5.5, 5.9, 7.1, 7.4, 7.6, 8.3, 8.4, 8.5, 9.3, 10.1, 10.9, 12.5, 13.2, 16.7, 17.5, 20.5, & 24.1 cents for a total of 21.]
- There was 1 with a full dollar denomination.
 - Question #4: What vehicle was depicted on the \$1.00 stamp?

The U. S. Postal TRANSPORTATION ISSUE of 1981-1995

- It was the “Seaplane 1914”.



The U. S. Postal TRANSPORTATION ISSUE of 1981-1995

- Question #5: What was the “largest” vehicle depicted?

The U. S. Postal TRANSPORTATION ISSUE of 1981-1995

- It was the “Ferryboat 1900s”.



The U. S. Postal TRANSPORTATION ISSUE of 1981-1995

- Question #6: How many different “boat” designs were depicted?

The U. S. Postal TRANSPORTATION ISSUE of 1981-1995

5



- A total of 5 boat designs were depicted, but not all rode *in the water*.
Question #7: What was this 5th design?

The U. S. Postal TRANSPORTATION ISSUE of 1981-1995

- It was the “Iceboat 1880s”.



The U. S. Postal TRANSPORTATION ISSUE of 1981-1995

- Question #8: Which design was the weirdest to be included in this series as it has no wheels on the bottom, no combustion engine to power it, and is not powered directly by man or beast for its motion?

The U. S. Postal TRANSPORTATION ISSUE of 1981-1995

- It was the “Elevator 1890s”.



The U. S. Postal TRANSPORTATION ISSUE of 1981-1995

- Question #9: Which 2 designs, besides the Iceboat, were designed to specifically operate in freezing weather?

The U. S. Postal TRANSPORTATION ISSUE of 1981-1995

- They were the “sleigh 1880s” and the “Dog Sled 1920s”.

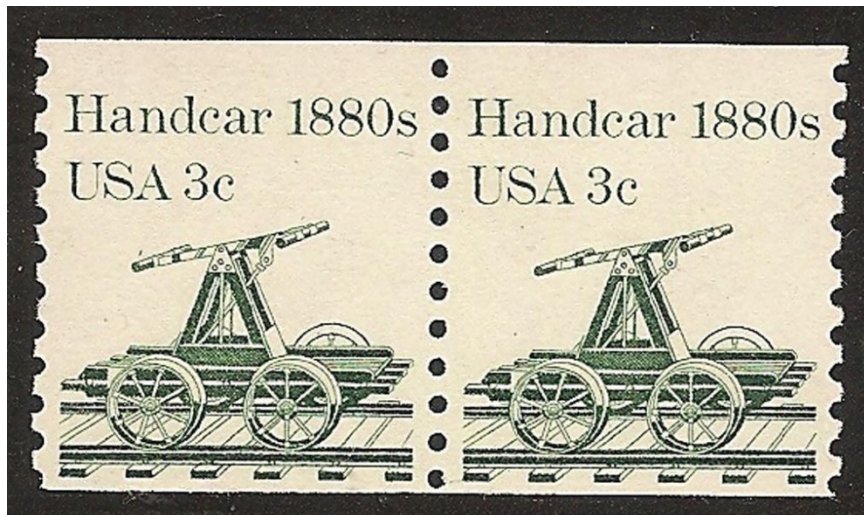


The U. S. Postal TRANSPORTATION ISSUE of 1981-1995

- There were 6 denominations that had multiple designs issued with the same cent value.
 - 4 of them had 2-designs.

The U. S. Postal TRANSPORTATION ISSUE of 1981-1995

- The 3 cent



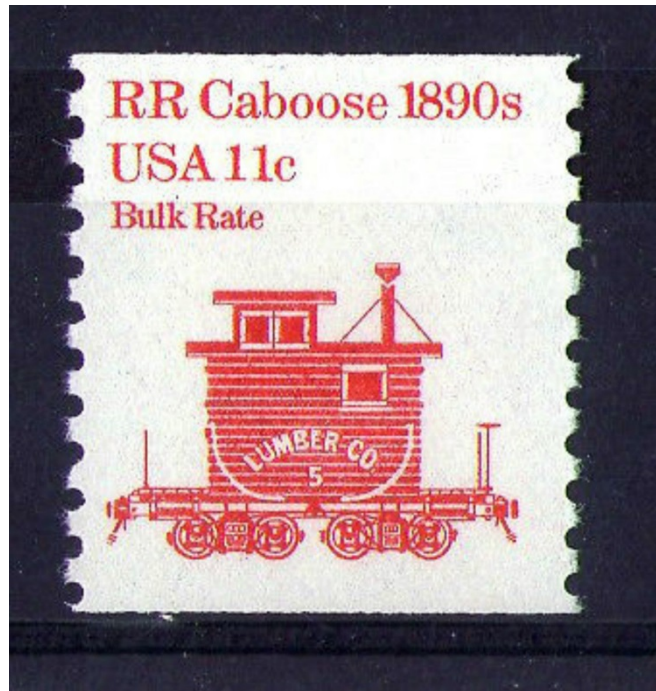
The U. S. Postal TRANSPORTATION ISSUE of 1981-1995

- 4 cent



The U. S. Postal TRANSPORTATION ISSUE of 1981-1995

- 11 cent



The U. S. Postal TRANSPORTATION ISSUE of 1981-1995

- 17 cent



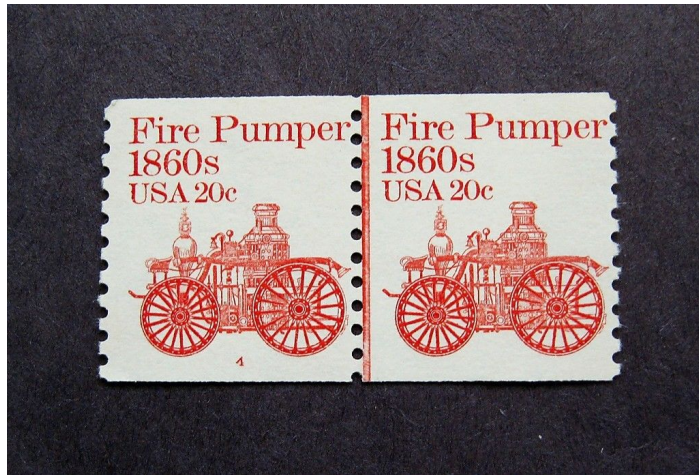
The U. S. Postal TRANSPORTATION ISSUE of 1981-1995

– 1 of them had 3-designs.

Question #10: Which
denomination was this?

The U. S. Postal TRANSPORTATION ISSUE of 1981-1995

- This was the 20 cent value.



The U. S. Postal TRANSPORTATION ISSUE of 1981-1995

– And 1 denomination had 4 *basic* designs.

Question

#11: Which denomination was this?

The U. S. Postal TRANSPORTATION ISSUE of 1981-1995

- This was the 5 cent value.



The U. S. Postal TRANSPORTATION ISSUE of 1981-1995

- Question #12: Which design experienced a color change by the government?

The U. S. Postal TRANSPORTATION ISSUE of 1981-1995

- It was the 5-cent “Canoe 1800s”.



The U. S. Postal TRANSPORTATION ISSUE of 1981-1995

- There were 5 wagon designs that dealt with food distribution directly to the public.



The U. S. Postal TRANSPORTATION ISSUE of 1981-1995

- There were 4 cycle designs, but not all had pedals.



The U. S. Postal TRANSPORTATION ISSUE of 1981-1995

- There were 7 designs that required a pair of tracks to ride on.



The U. S. Postal TRANSPORTATION ISSUE of 1981-1995

- 8 vehicles were powered by man for motion.
 - 3-cent “Handcar”
 - 5-cent “Canoe”
 - 5.9-cent “Bicycle”
 - 6-cent “Tricycle”
 - 7.4-cent “Baby Buggy”
 - 8.4-cent “Wheel Chair”
 - 12.5-cent “Pushcart”
 - 24.1-cent “Tandem Bicycle”

The U. S. Postal TRANSPORTATION ISSUE of 1981-1995

- 5 issues were re-designed slightly using the same basic design.
 - 1-cent “Omnibus 1880s”
 - 2-cent “Locomotive 1870s”
 - 4-cent “Stagecoach 1890s”
 - 5-cent “Circus Wagon 1900s”
 - 8.3-cent “Ambulance 1860s”.

The U. S. Postal TRANSPORTATION ISSUE of 1981-1995

- 4 designs dealt with vehicles associated with disasters of some kind.



The U. S. Postal TRANSPORTATION ISSUE of 1981-1995

- Numerous ones had inscriptions that applied to special rate usages such as “Nonprofit”, “Bulk Rate”, “Pre-Sort First Class”, and “Zip 4 Pre-Sort”. Due to the special inscriptions, these are considered to be a form of “Pre-Cancels”.

The U. S. Postal TRANSPORTATION ISSUE of 1981-1995

- Then there were the more common type of “Pre-Cancel” with the 2-Bars.
- Some came with only the 2-bars, while others had an inscription between the bars.
- In all, the Scott Catalog has 15) numbers defined as “Bureau pre-cancels”.

The U. S. Postal TRANSPORTATION ISSUE of 1981-1995

- Just to make things interesting, the 10-cent “Tractor Trailer 1930s” was issued using two different printing methods: *“engraved”* versus *“photogravure”*.

The U. S. Postal TRANSPORTATION ISSUE of 1981-1995

- Another variation involved the 8.3-cent “Ambulance 1860s” as it came “*with*” and “*without*” tagging.

The
End