


Small **Stamps**

by Paul Brach
for the Rochester Philatelic Association



May, 2018

U.S. 2476

21 x 25 mm = 525 sq. mm



U.S. 1449

25 x 21 mm = 525 sq. mm



U.S. Mammals Booklet Stamps

1883

22 x 18 = 400 sq. mm



1884

22 x 19 = 420 sq. mm



U.S. 1822

18 x 20 = 360 sq. mm



U.S. 1734

16 x 20 = 320 sq. mm

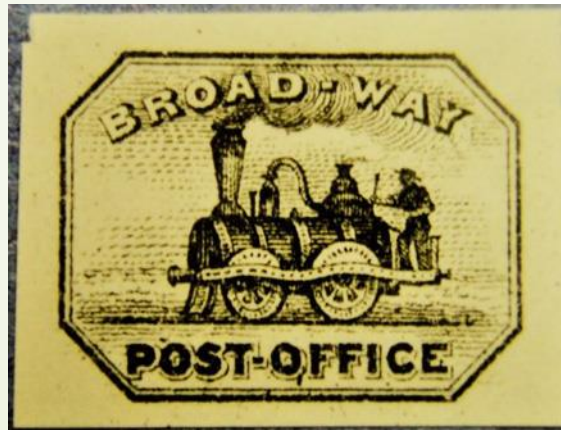


U.S. RS119b

40 x 12 = 480 sq. mm

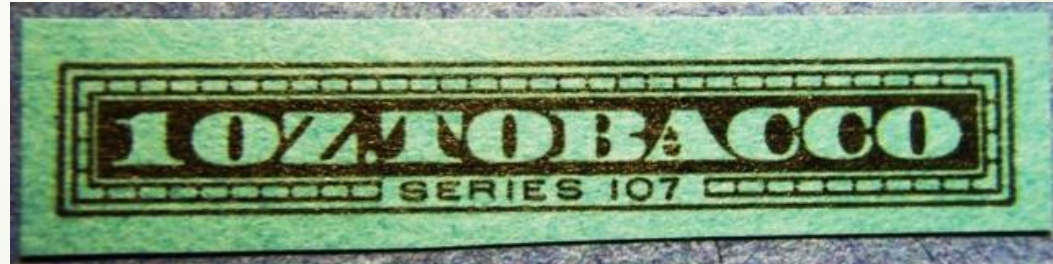


U.S. 26L1 and 26L2
25 x 19 = 475 sq. mm



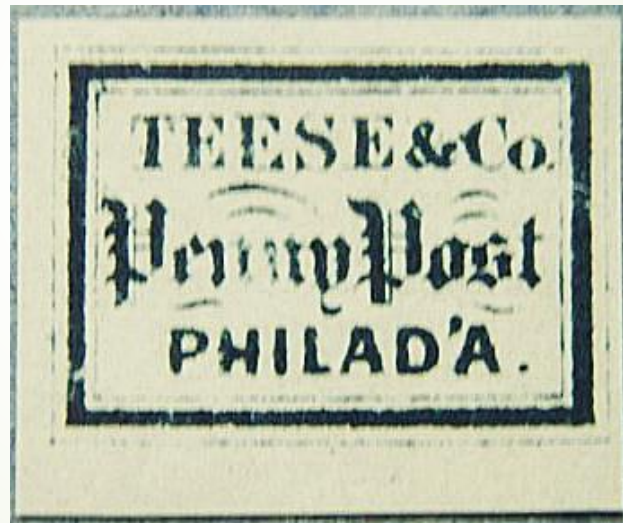
U.S. TF443

42 x 9 = 380 sq. mm



U.S. 137L1

18 x 15 = 270 sq. mm



U.S. RJA42d

$38 \times 6.5 = 250$ sq. mm



U.S. 15L14

16 x 11 = 175 sq. mm



Russia 2292

19 x 26 mm = 494 sq. mm



Russia 12

18 x 25 = 450 sq. mm



18 x 25 mm = 450 sq. mm

Far Eastern
Republic 30



Finland 74



Monaco B5

26 x 16 = 416 sq. mm



Kazakhstan 360, 375 = 408 sq. mm
17 x 24 mm 24 x 17 mm



Spain 174

20 x 20 = 400 sq. mm



396 sq. mm

Costa Rica 210A
22 x 18 mm

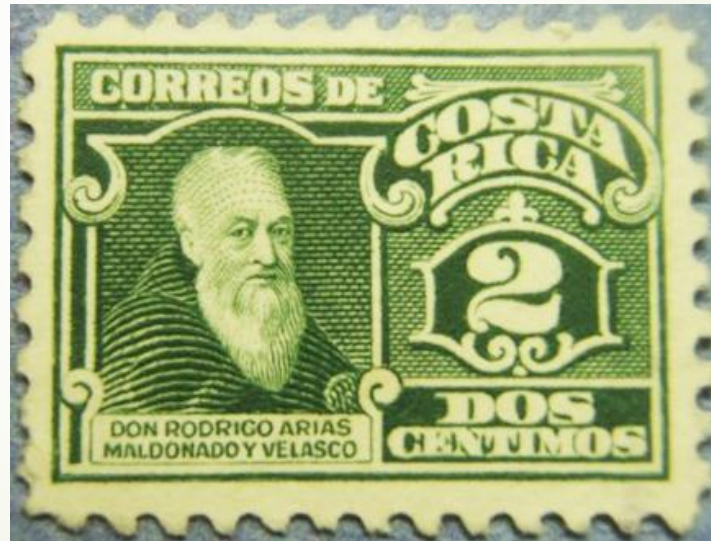


Uruguay 61a
18 x 22 mm



Costa Rica 128

22 x 17 = 374 sq. mm



Bergdorf 3

20 x 18 = 360 sq. mm



360 sq. mm

Brazil RA9

19 x 19 mm



Nicaragua RA62

24 x 15 mm



Brazil 23

$22 \times 16 = 350$ sq. mm



Victoria 184

$13 \times 22 = 286$ sq. mm



Shanghai 152

10 x 24 = 240 sq. mm (per half)



Bolivar 2 and 3

11 x 14 = 154 sq. mm



Columbia 601

$18 \times 8 = 144$ sq. mm



Alberta AP1

10 x 11 = 110 sq. mm



Perspective



There are plenty more...
...if you look close!

Great Britain



Germany



Columbia-Antioquia



Italy





Thanks
for
watching!



Design and Layout by Tom Fortunato