

THE

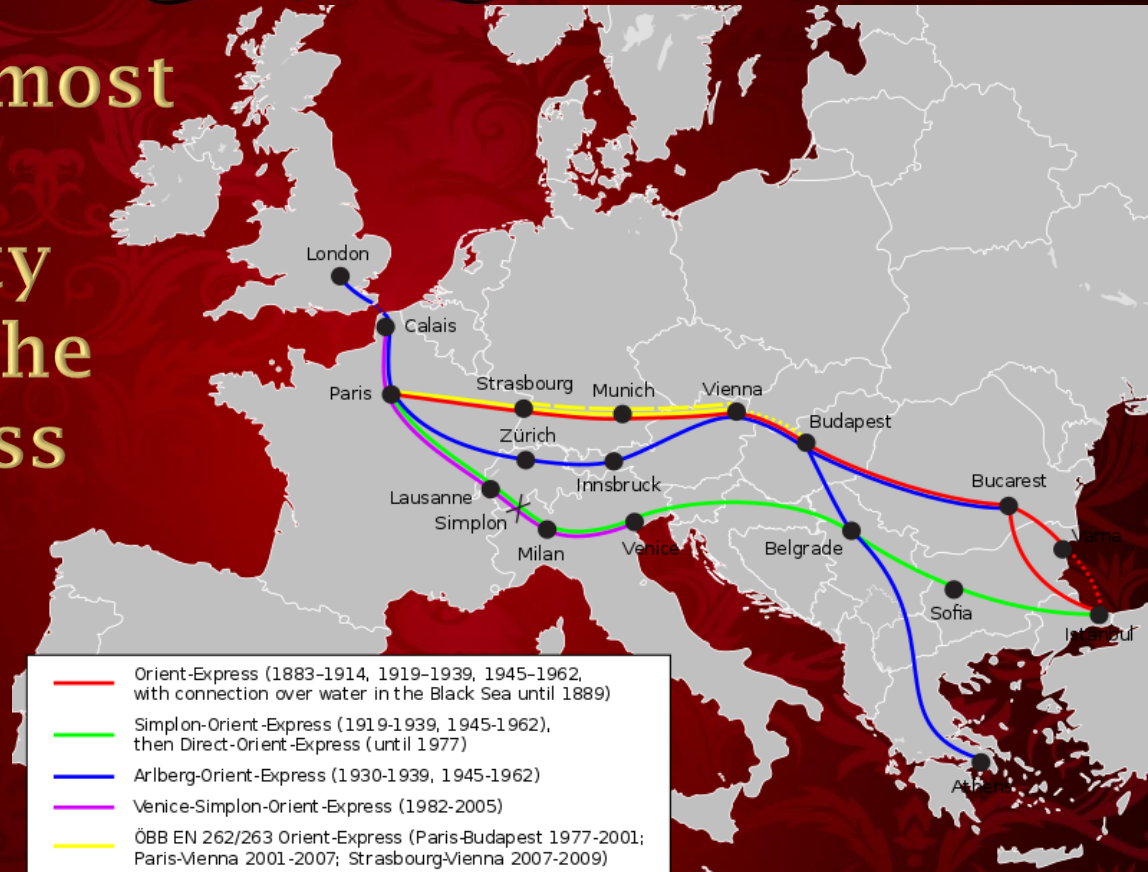


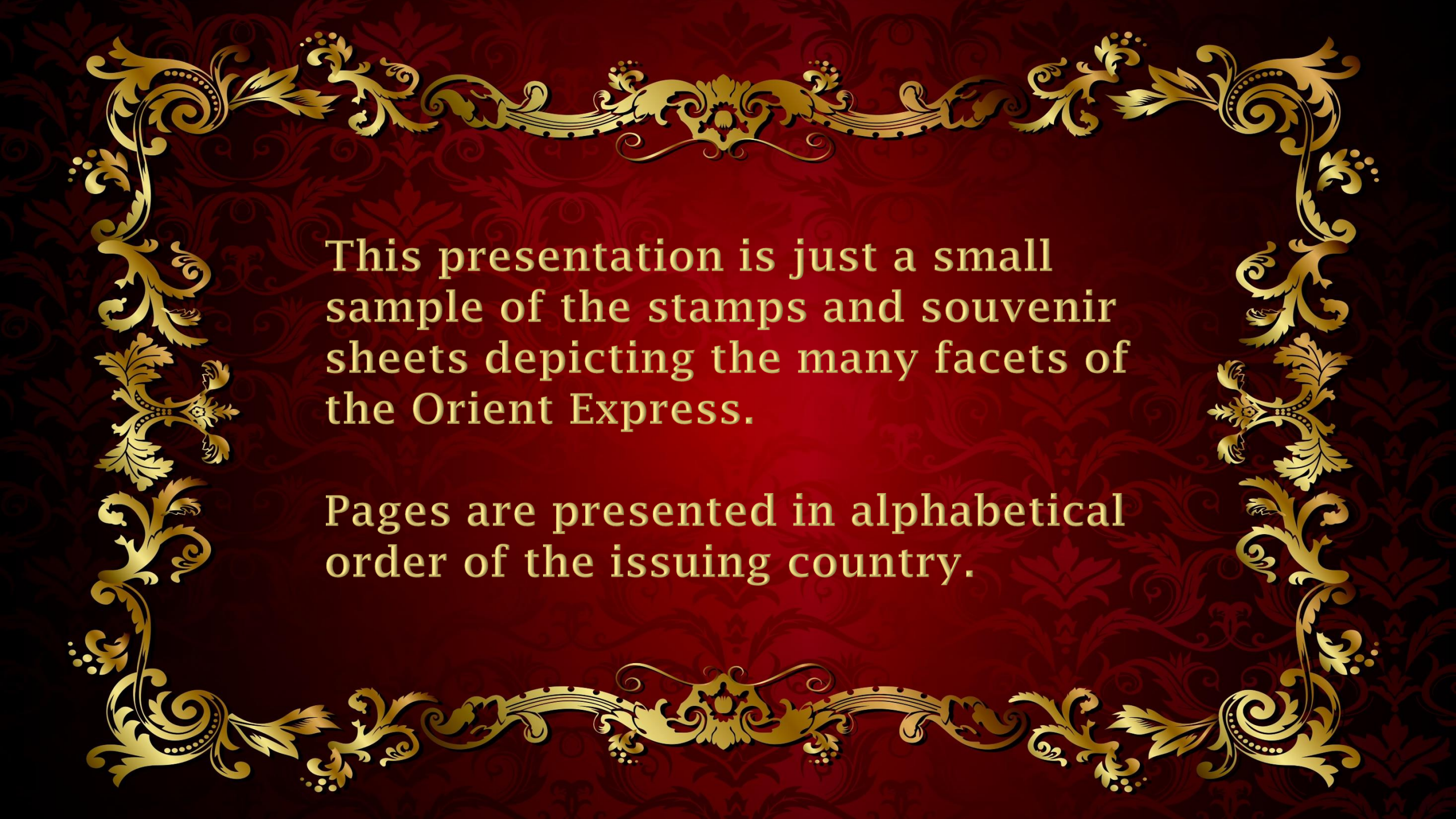
ON STAMPS

by Luis Greiff, Jr.

for the Rochester Philatelic Association, January, 2018

Perhaps the most famous train in both reality and fiction, the Orient Express ran through Europe's greatest cities.





This presentation is just a small sample of the stamps and souvenir sheets depicting the many facets of the Orient Express.

Pages are presented in alphabetical order of the issuing country.

Austria



Bosnia & Herzegovina (Serbia Adm.)



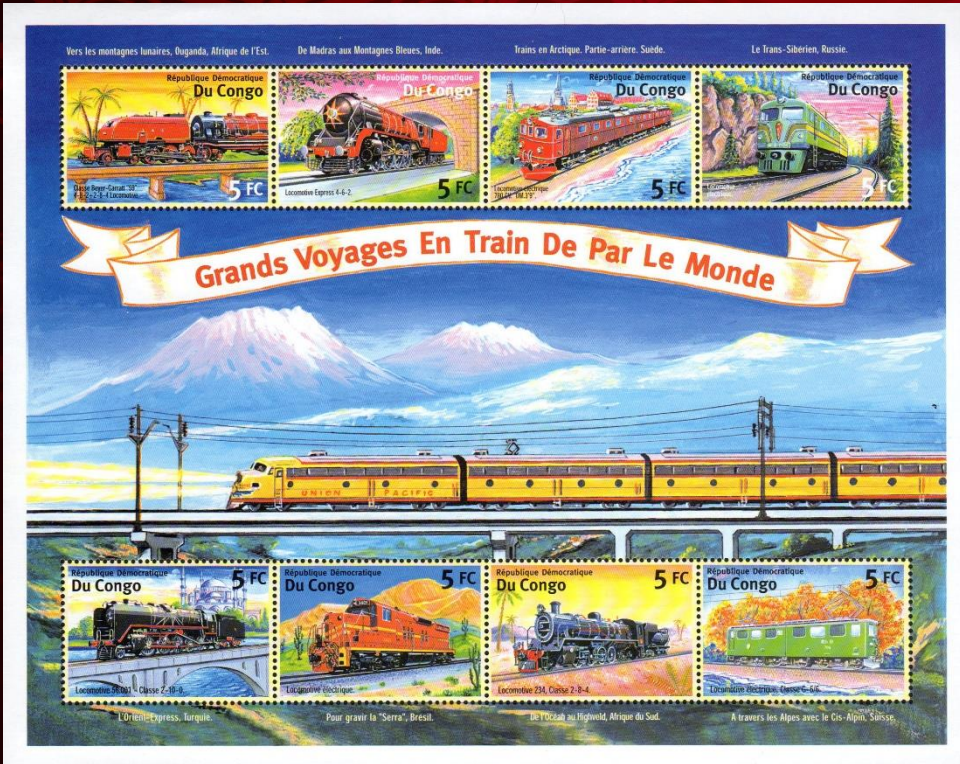
Bulgaria



Chad



Congo (Democratic Republic)



Cook Islands



Cuba



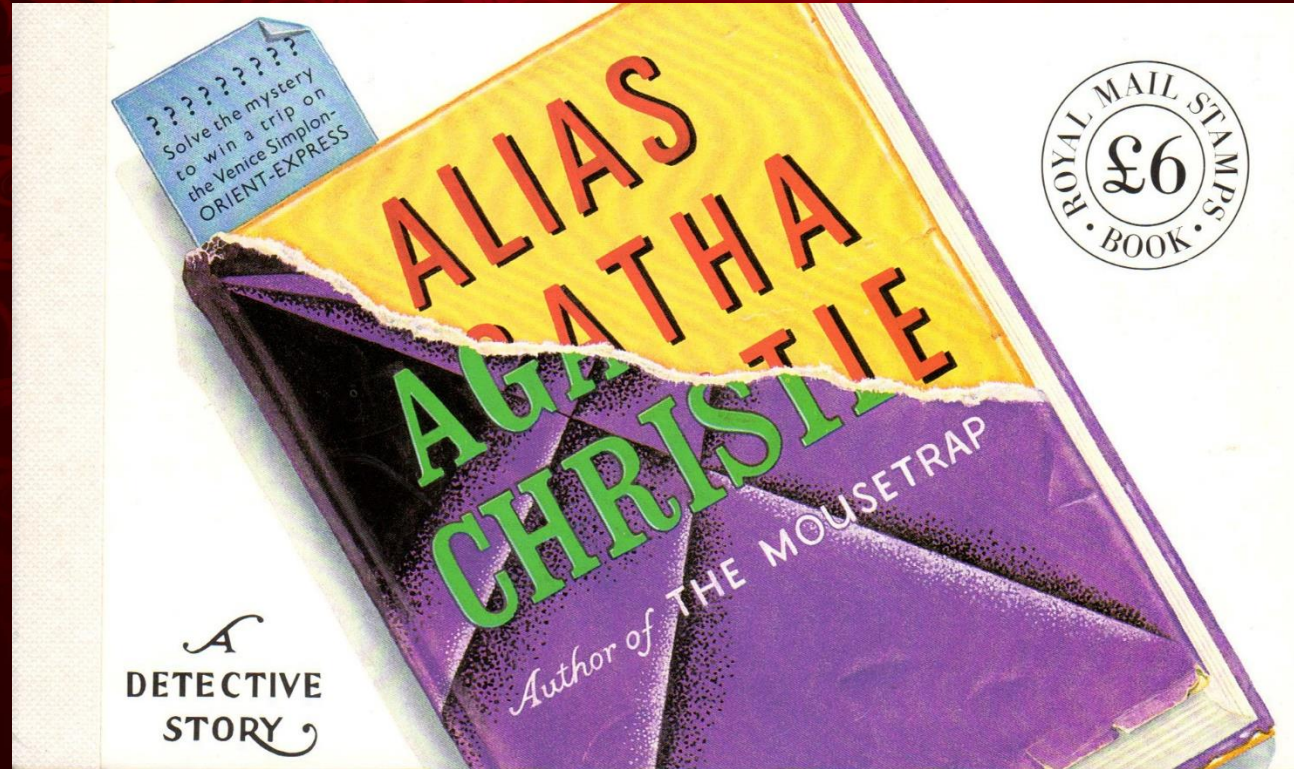
Dominica



France



Great Britain



Great Britain



IN *Murder on the Orient Express*, the train is stuck conveniently in a snow-drift while Poirot solves the mystery of an American passenger found dead with numerous stab wounds. The setting stems from Agatha Christie's own experiences. She was delayed on the express by floods and reduced to iron rations - sharing chocolate and biscuits with fellow passengers: 'a large jocose Italian, a little German with a bald head, a Bulgarian lady, a thin and a terrible man from Chicago ... dressed in an orange suit, lots of gold chains and things, and a royal blue satin tie with horse shoes on it.' Agatha journeyed frequently on the Orient Express to and from Baghdad with her second husband Max Mallowan, the well-known archaeologist, later to be knighted, who excavated several important sites in the Middle East.

*In **Murder on the Orient Express**, the train is stuck conveniently in a snow drift while Poirot solves the mystery of an American passenger found dead with numerous stab wounds. The setting stems from Agatha Christie's own experiences. She was delayed on the express by floods and reduced to iron rations - sharing chocolate and biscuits with fellow passengers: 'a large jocose Italian, a little German with a bald head, a Bulgarian lady, a thin and a terrible man from Chicago ... dressed in an orange suit, lots of gold chains and things, and a royal blue satin tie with horse shoes on it.' Agatha journeyed frequently on the Orient Express to and from Baghdad with her second husband Max Mallowan, the well-known archaeologist, later to be knighted, who excavated several important sites in the Middle East.*

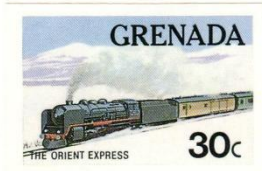
Great Britain



Grenada

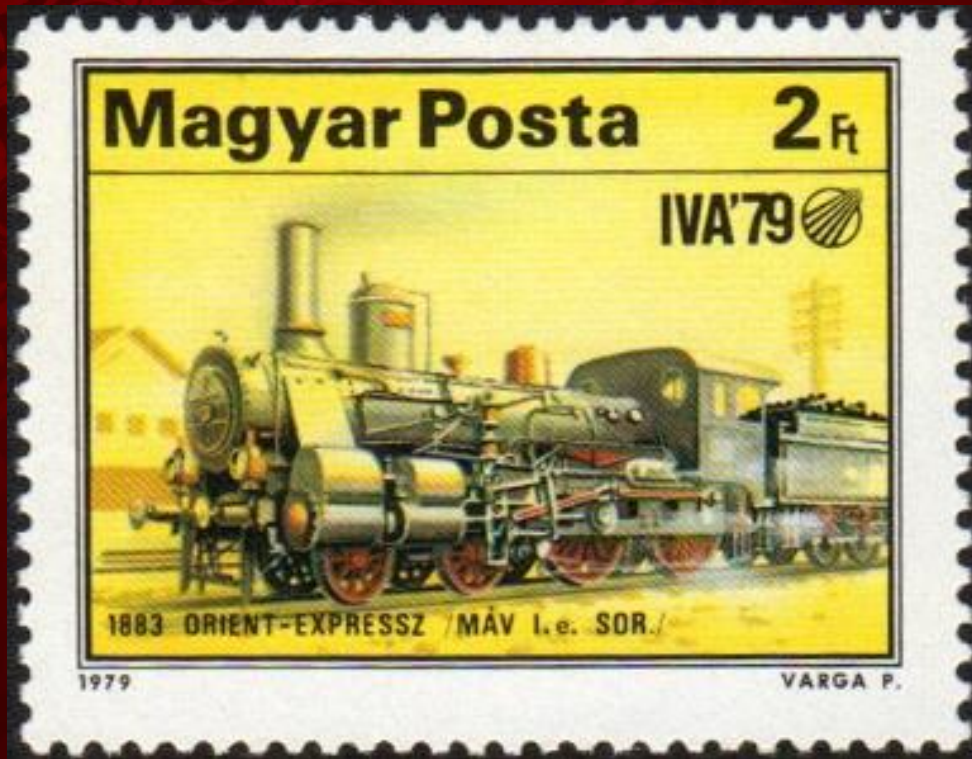


Proofs by the Format Process

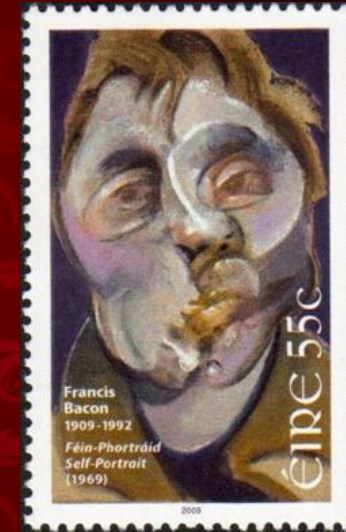
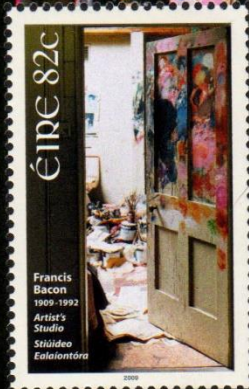


Format International Security Printers Ltd
Parkhouse Estate, Parkhouse Street, London SE5. Telephone 01-703 5068
Cables Formpro, London SE5

Hungary



Ireland



Isle of Man



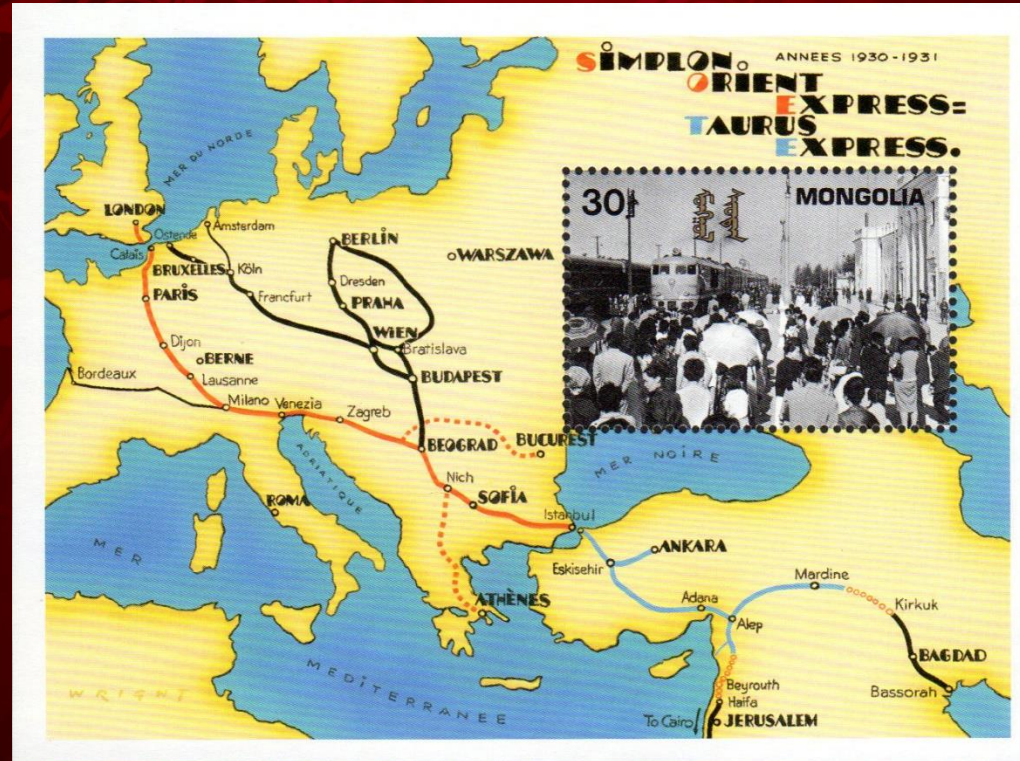
Lesotho



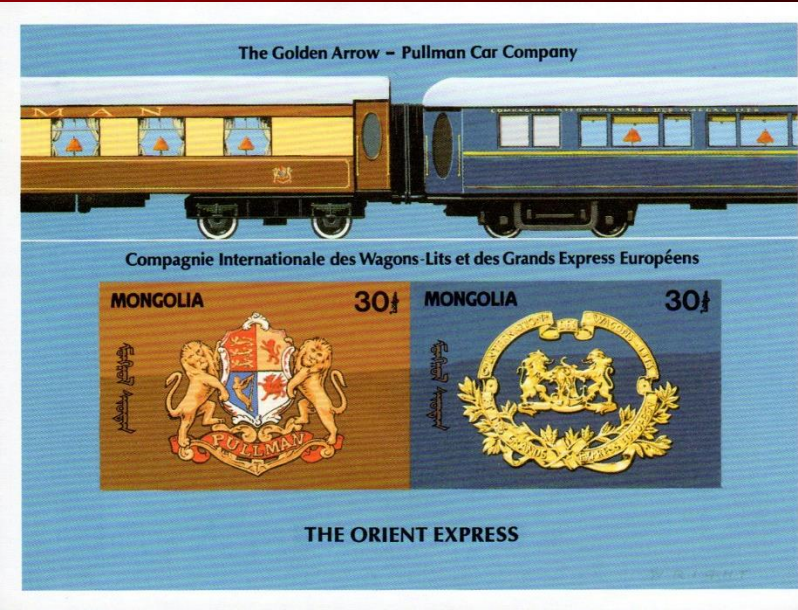
Mongolia



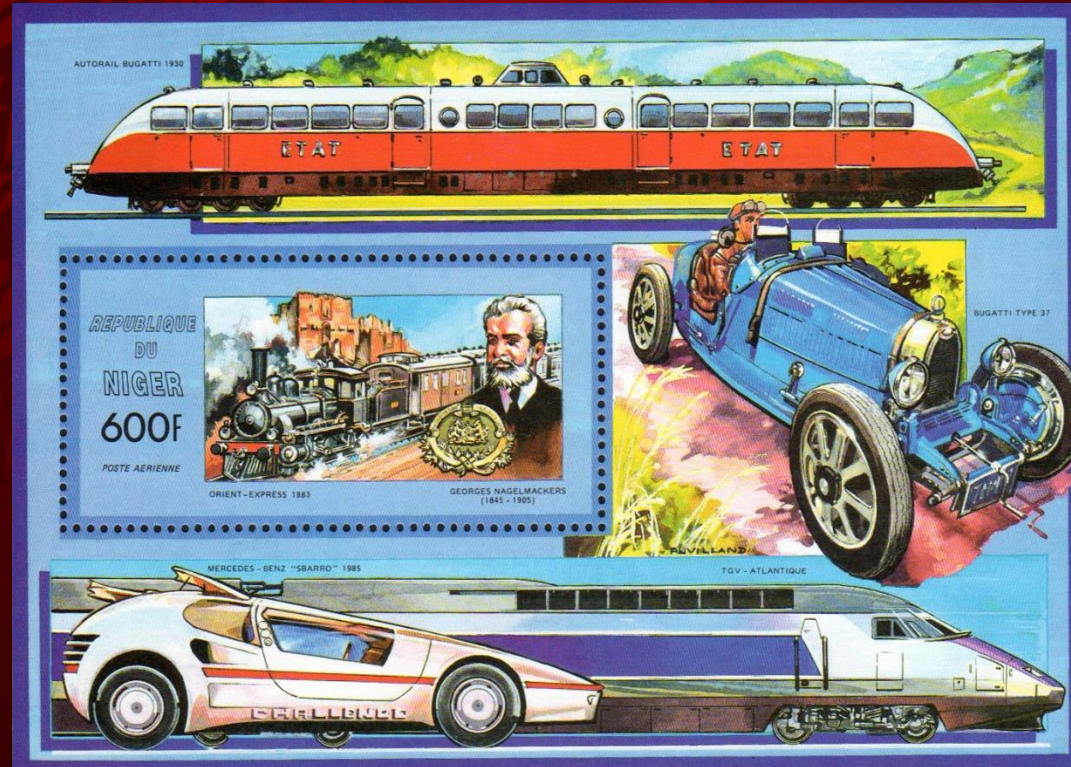
Mongolia



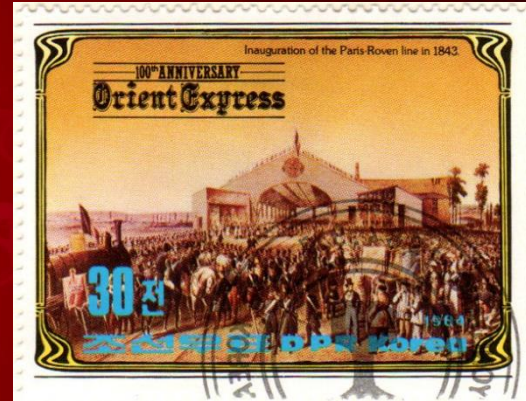
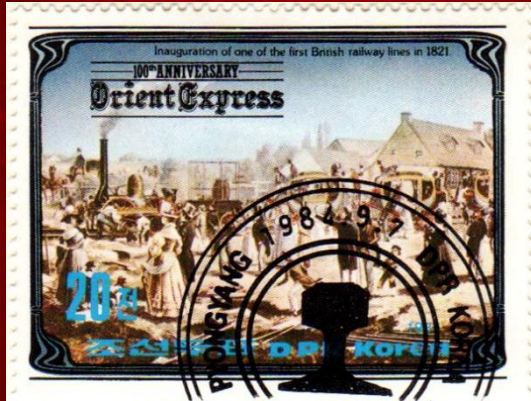
Mongolia



Niger



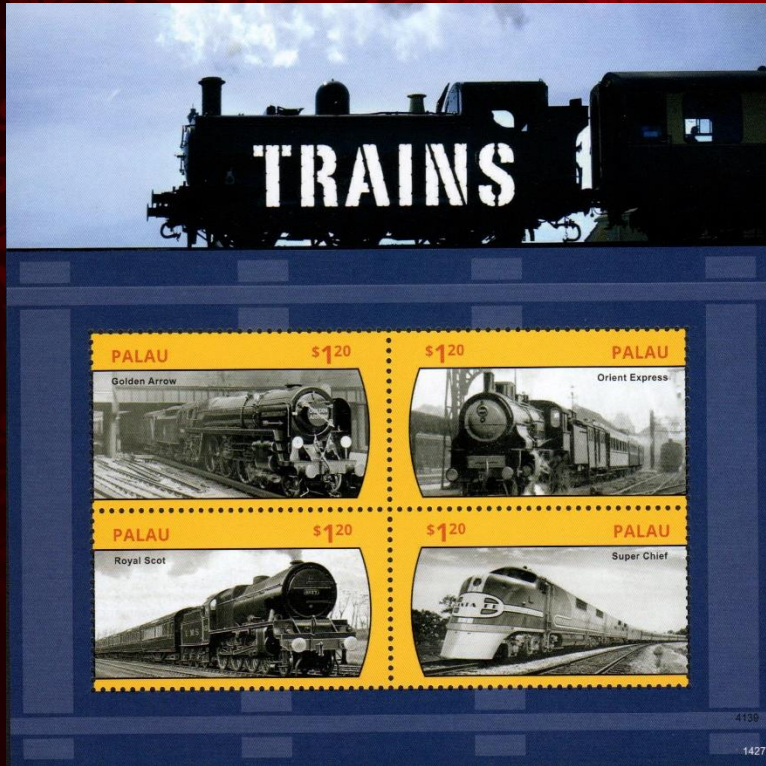
North Korea



North Korea



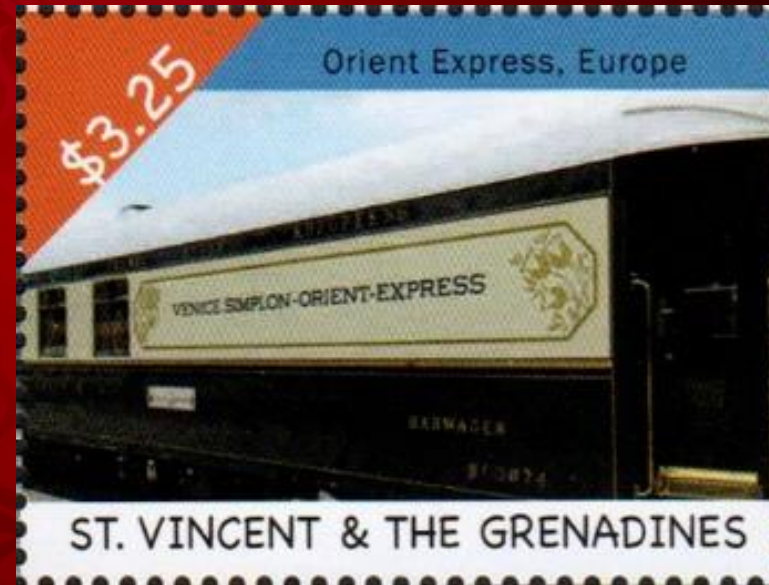
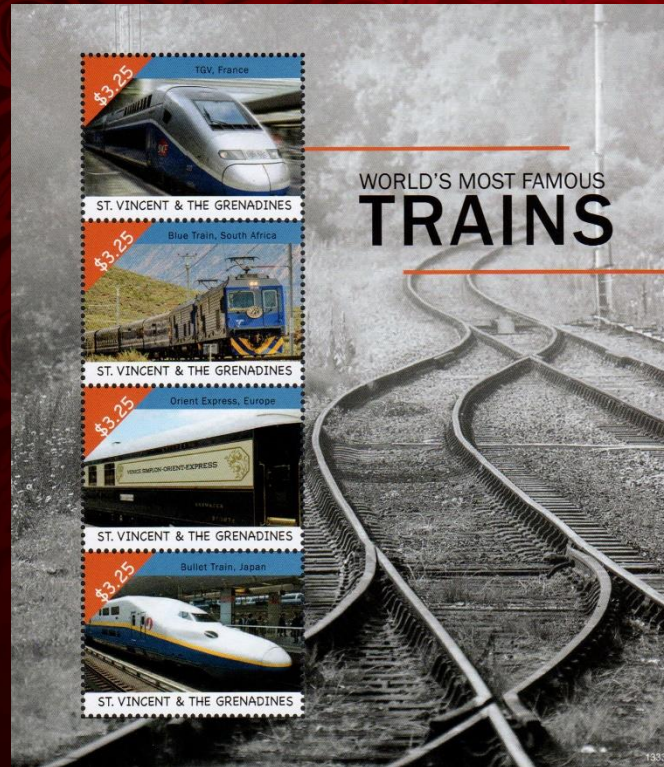
Palau



Romania



St. Vincent & the Grenadines



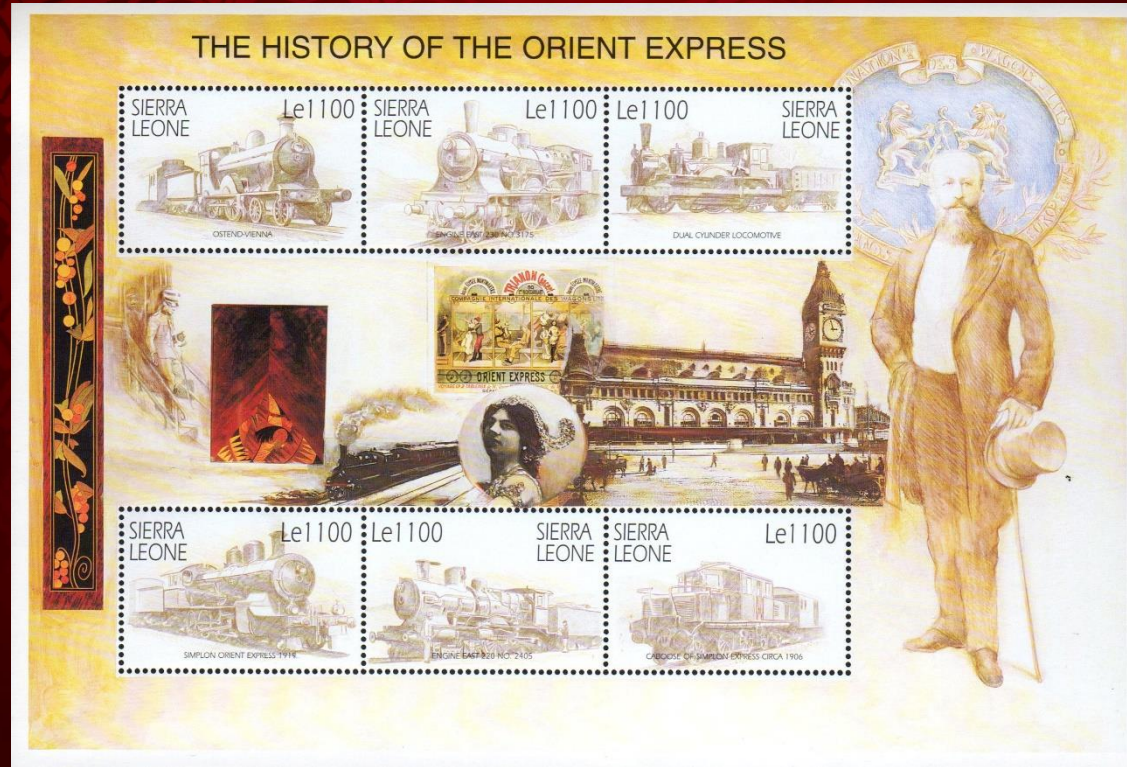
Serbia



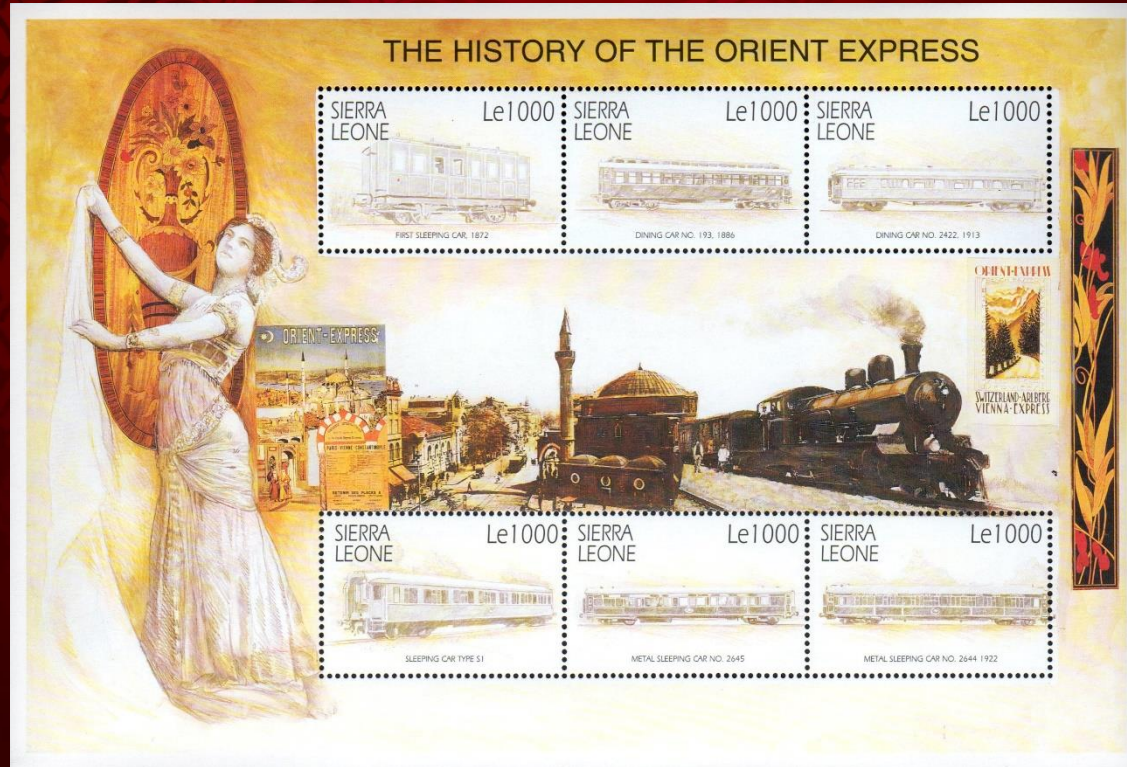
Sierra Leone



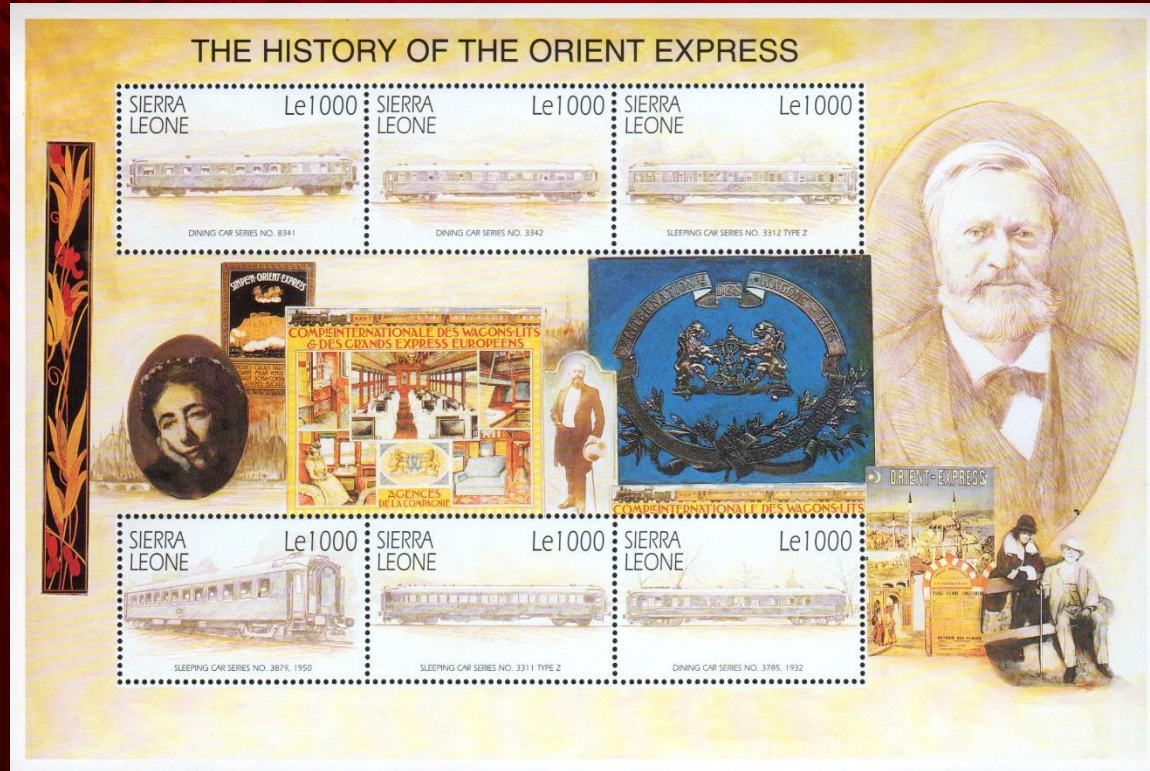
Sierra Leone



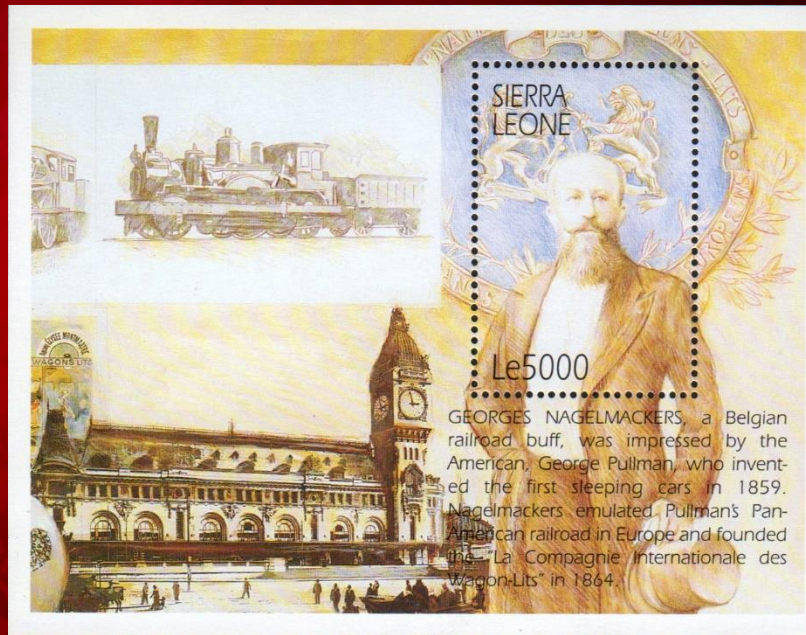
Sierra Leone



Sierra Leone



Sierra Leone



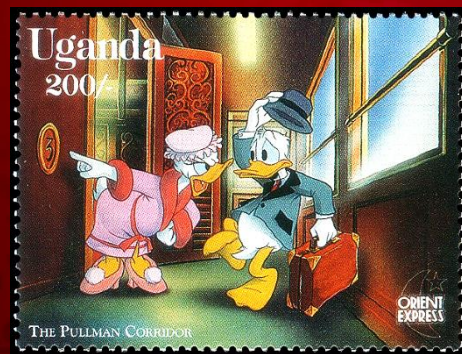
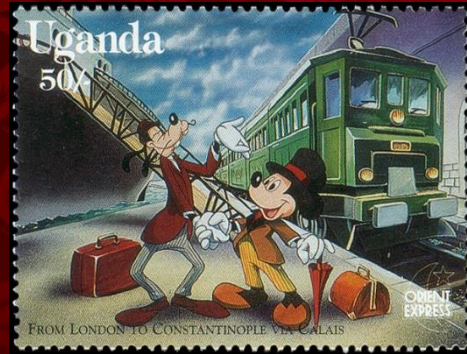
Sierra Leone



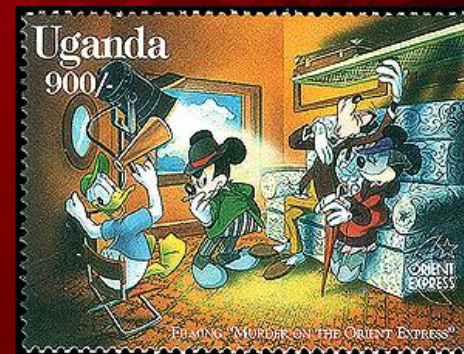
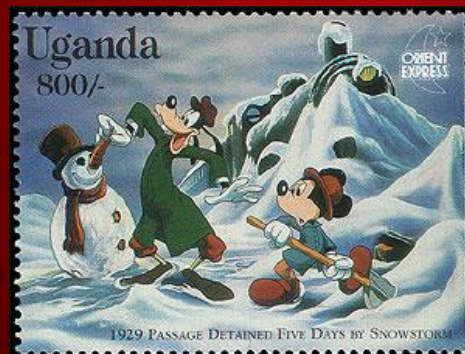
Switzerland



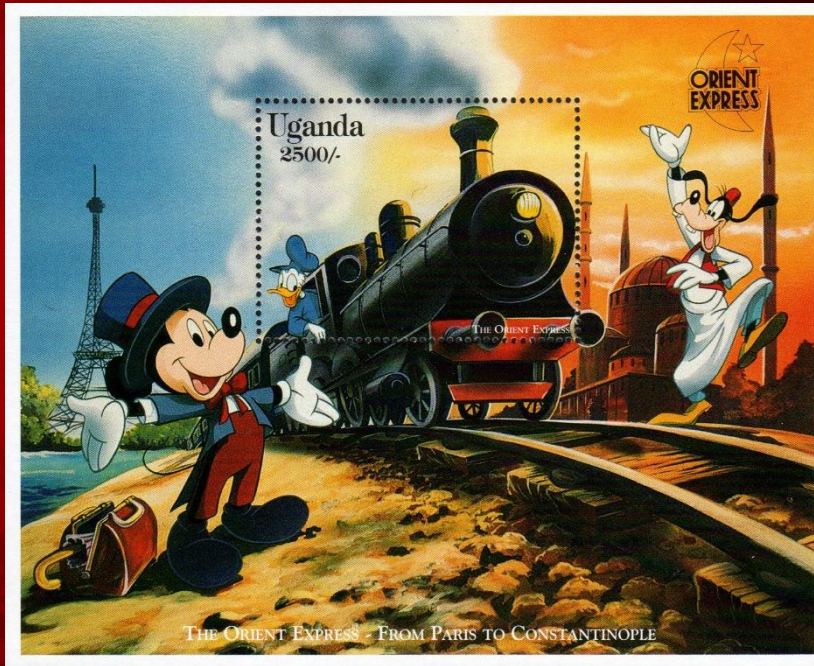
Uganda



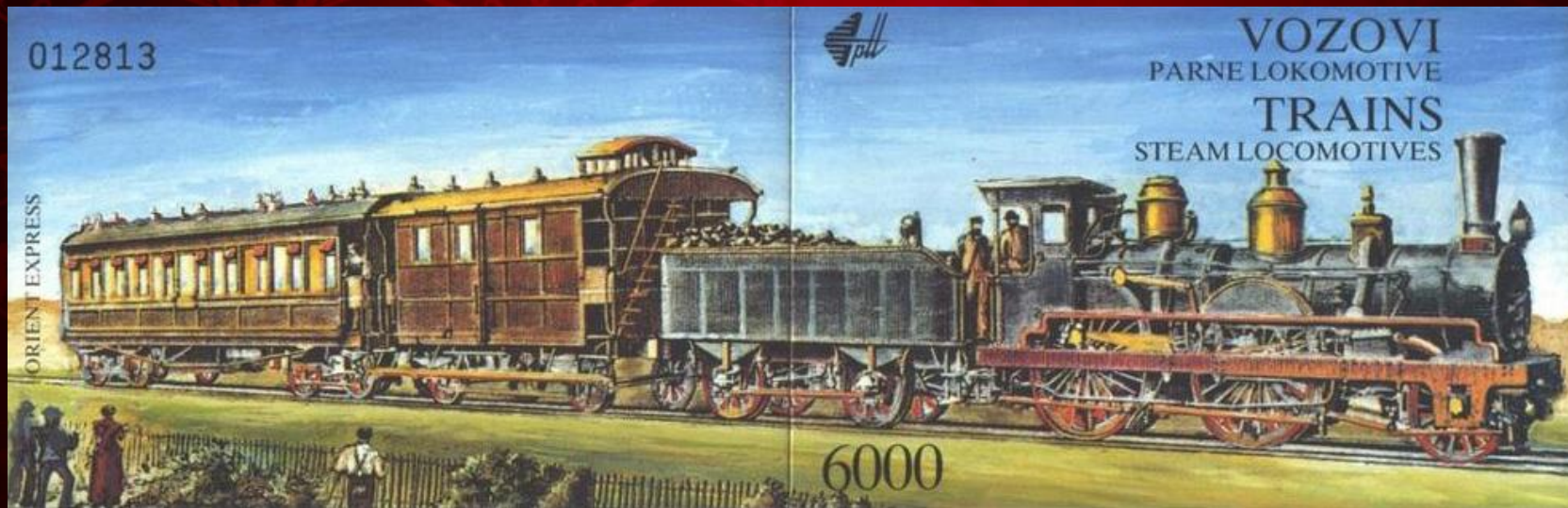
Uganda



Uganda



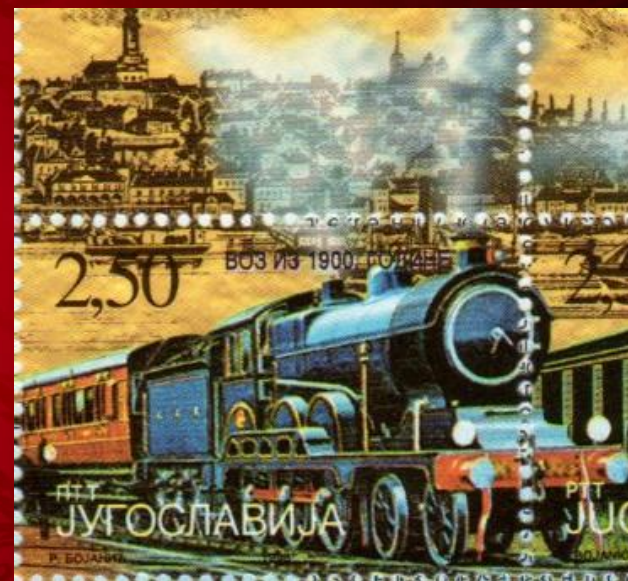
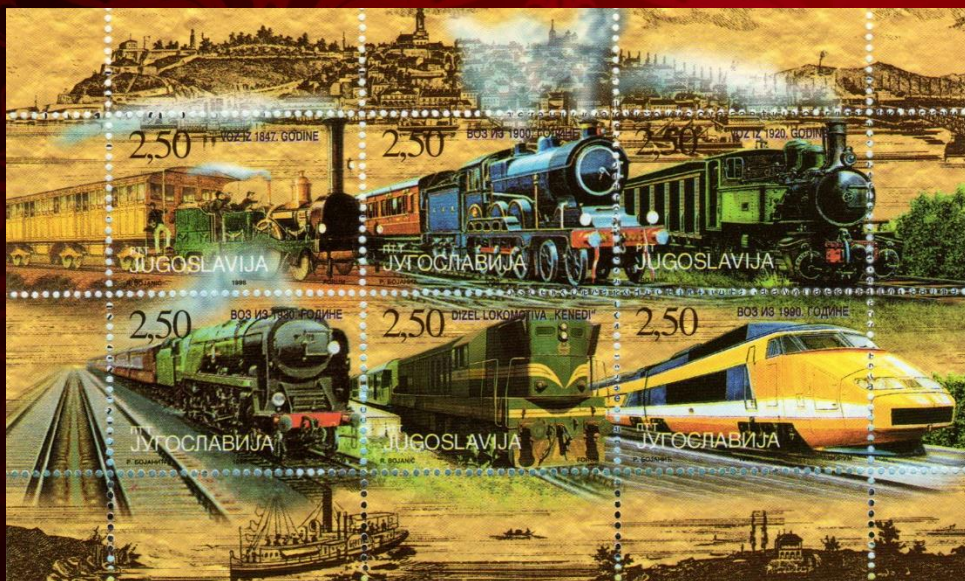
Yugoslavia



Yugoslavia



Yugoslavia



Zambia





And yes, the Orient Express had its own stamps!

½ pence postage and additional fee for a letter sent by the Orient Express, cancelled by the British Post Office in Constantinople, Nov. 20, 1889, addressed to Tilsit (East Prussia)



The End

Design and Layout by
Tom Fortunato