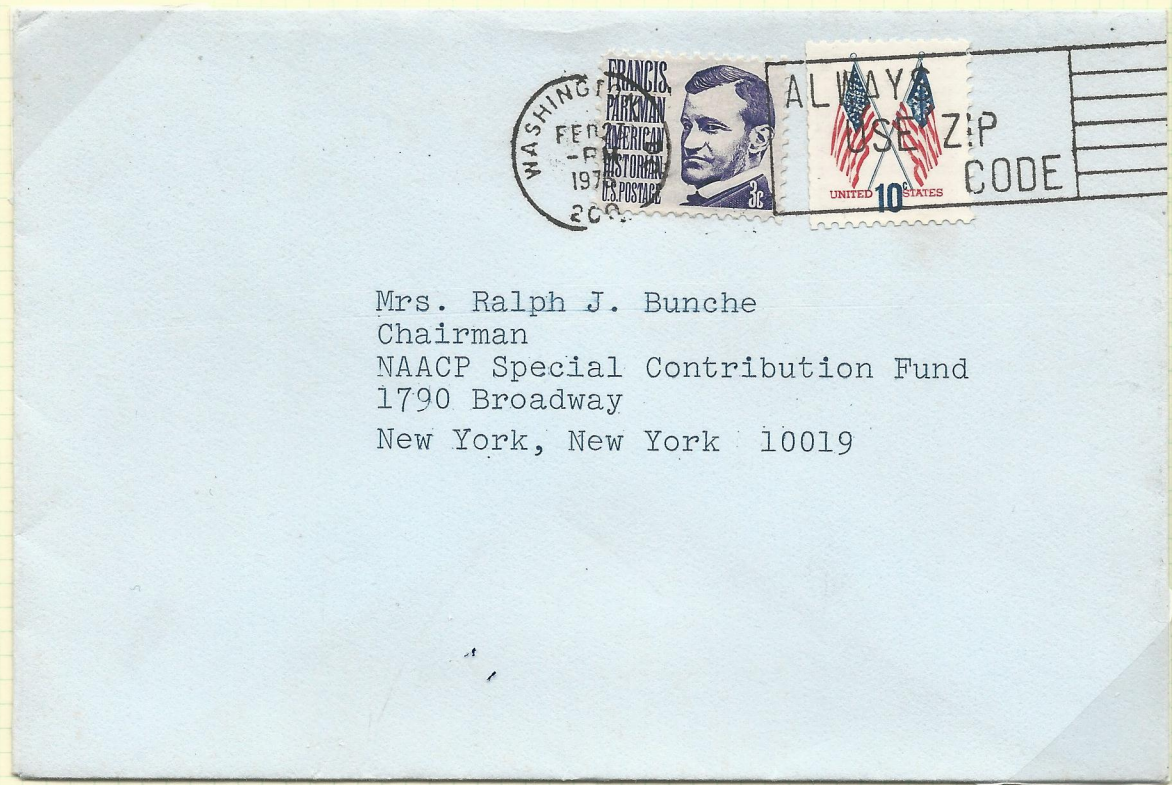


ALWAYS
USE ZIP
CODE

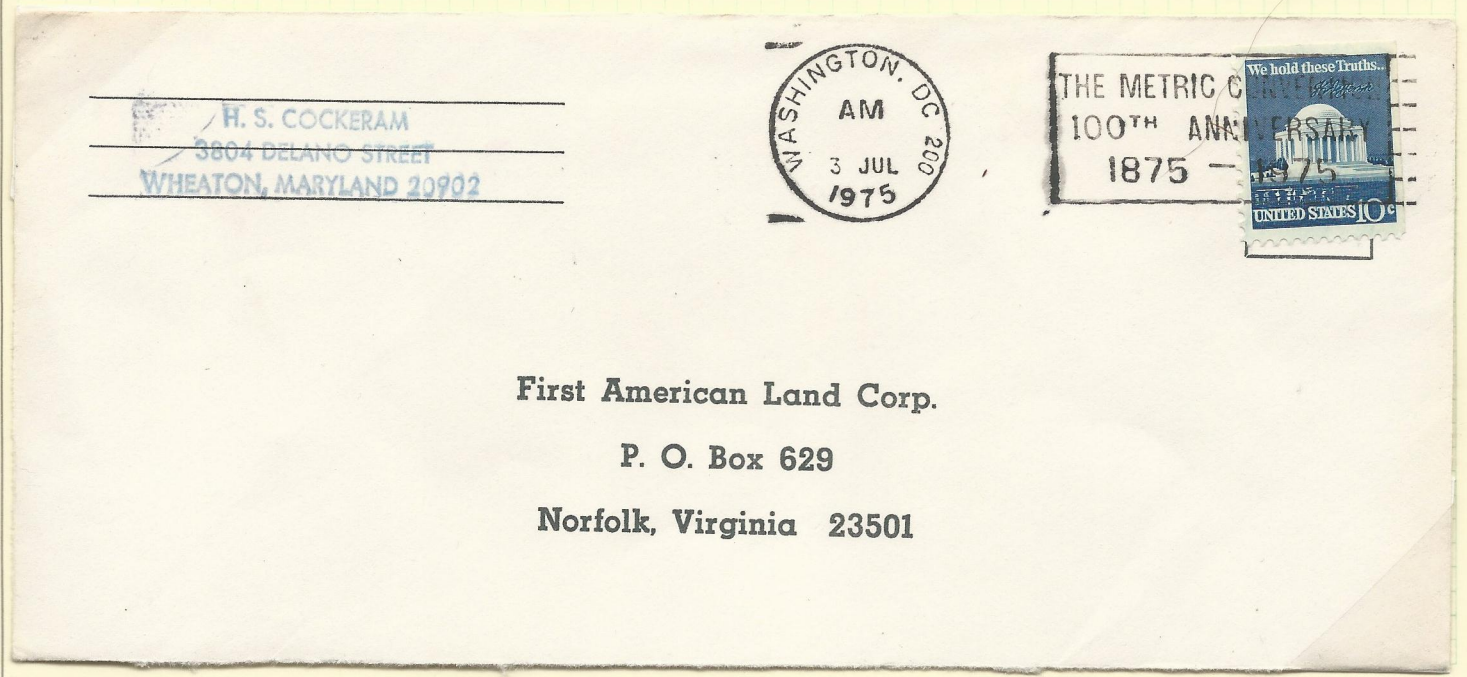
E.K.U.: 1975 FEBRUARY 23
L.K.U.: 1989 NOVEMBER 30



Mrs. Ralph J. Bunche
Chairman
NAACP Special Contribution Fund
1790 Broadway
New York, New York 10019

THE METRIC CONVENTION
100TH ANNIVERSARY
1875 - 1975

E.K.U.: 1975 MAY 2
L.K.U.: 1975 AUGUST 5



First American Land Corp.
P. O. Box 629
Norfolk, Virginia 23501