

How I Got Into Cachet Making



By Kelly Armstrong

April 2018

For the Rochester Philatelic Association

The process of making a cachet starts with researching stamp designs soon to be released by the Postal Service. Which will be popular, have copyright issues, or just turn out to be lemons?



Where does this information come from?

SEPTEMBER 11, 2017
VOL. 96, NO. 4637

Linn's Stamp

World's Largest Weekly Stamp News and Marketplace NEWS

Reminisce with classic toys on new British stamps

Royal Mail issued 10 stamps Aug. 22 honoring Britain's toy industry. Several of these toys also were popular in the United States.

Page 10

Fridley, Minn., had its own pony express service in 1960s

Politics and a special pony express service played roles in helping Fridley get its own post office. The office opened in 1966.

Page 18

Railway station dock serves as Skopje earthquake symbol

Postal tax stamps issued by Yugoslavia and Macedonia to raise funds for earthquake relief efforts show the train station clock.

Page 20

Four-week Total Solar Eclipse stamp experiment: putting the thermochromic ink to the test

By Charles See

On June 20, the United States Postal Service issued its Total Solar Eclipse commemorative forever stamp (Scott 5211) to heighten anticipation of the eclipse that passed over the continental United States Aug. 21.

When the black disc covering the moon is warmed, as from the touch of a finger, the moon is revealed. When the stamp cools, the black color returns and the moon is hidden once more.

This clever trick, the first of its kind for a U.S. stamp, is the result of heat-reactive thermochromic ink.

Not long after the stamp was issued, we began receiving complaints from collectors who were displeased because the mint panes had ripples in them that prevented them from laying flat.

Linn's observed this rippling in the



Linn's conducted a four-week experiment to see how excessive light and high temperatures affect the thermochromic ink disc covering the moon on the Total Solar Eclipse forever stamps. At left is a normal (control) stamp. The middle stamp was exposed to near constant conditions of light and temperature, while the right stamp experienced variable lighting and temperature conditions. The three stamps are shown at room temperature (about 72 degrees Fahrenheit).

panes purchased for the Scott editorial staff's reference collection.

Mark Saunders, a USPS spokesman, explained that the observed rippling was due to a "layering" process used to apply the thermochromic ink during printing.

At the time the stamp was issued,

the Postal Service also made available (for 25¢) what it calls a "protective sleeve" — a black opaque envelope for storing an intact 16-stamp pane of Total Solar Eclipse stamps.

Thus housed, the pane would be kept in complete darkness, and the

Continued on page 18

U.S. classics, worldwide rarities in Cherrystone auction

By Michael Baadke

Cherrystone Philatelic Auctioneers will present a two-day sale of United States and worldwide stamps and covers, proofs, large lots, and collections. The auction will take place Sept. 13-14 at the Cherrystone galleries in New York City.

The U.S. classics on offer include

an unused 1867 90¢ blue George Washington stamp with F grill (Scott 101), centered slightly to bottom, according to Cherrystone, but described as a fine, sound example with beautiful color. The auction firm's estimated net realization for this stamp is \$7,000.

A single 4¢ blue error of color stamp from the 1893 Columbian Exposition set (Scott 233a) also is set to be auctioned.

"The 4¢ Columbian color error was caused by the use of a wrong batch of ink," Cherrystone explains, "and spectrographic analysis has shown that the blue inks of the 4¢ error and 1¢ Columbian have the same components."

The 4¢ stamp was normally issued in ultramarine, a distinct color from the blue color error.



Czechoslovakia printed but withdrew a set of stamps for the 1984 Summer Olympic in Los Angeles with a "Los Angeles" inscription in black. The stamps were destroyed, but 17 to 18 examples of the 1-koruna survived. This one is being offered at the Cherrystone sale.

The estimated net realization for the Columbian color error is \$6,000.

A postmarked example of the scarce 1923 rotary press printing of the 1¢ green Benjamin Franklin stamp with gauge-11 perforations (Scott 594, processed from coil

Continued on page 21



THE STAMP COLLECTING ROUND-UP

INTERESTING NEWS, RESOURCES AND LINKS ABOUT STAMPS, STAMP COLLECTING AND POSTAL OPERATIONS.

I also look for FDCs and other covers without a cachet to make my own designs on. These will become “add-on” cachets.



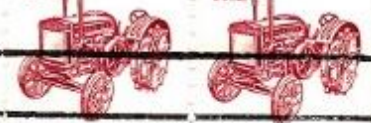
Here is a selection of my favorite current issue and local event covers.

- **1987 7.1c Tractor**
- **1988 set of 4 Cats**
- **2004 Henry Mancini**
- **2005 WBER 20th Anniv.**
- **2005 Oz Fest Station**
- **2007 Gerald Ford**
- **2013 Holiday Wreath**
- **2017 Sky Writing**



MISSOURI
FEB
6
1987
93578

Tractor 1920s 7.1 USA Tractor 1920s 7.1 USA



FIRST DAY OF ISSUE
RURAL AMERICA





USA 22

USA 22

USA 22

USA 22

Abyssinian Cat, Himalayan Cat, Siamese Cat, Persian Cat

American Shorthair Cat, Birchen Cat

Maine Coon Cat, Burmese Cat

FIRST DAY OF ISSUE

CACHET
K. ARMSTRONG



ARMSTRONG CACHET



Walt

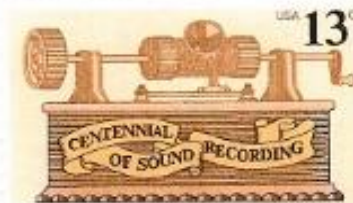
FIRST DAY OF ISSUE



WBER 90.5
THE ONLY STATION THAT
MATTERS
SERVING THE COMMUNITY FOR 20
YEARS 1985-2005



ARMSTRONG CACHET



WBER STATION
WB**ER**
fm90.5



Celebrating 20 Years of Broadcasting
October 31st, 2005
Fairport, New York 14450

THERE IS NO PLACE LIKE HOME

OZ FEST

2005

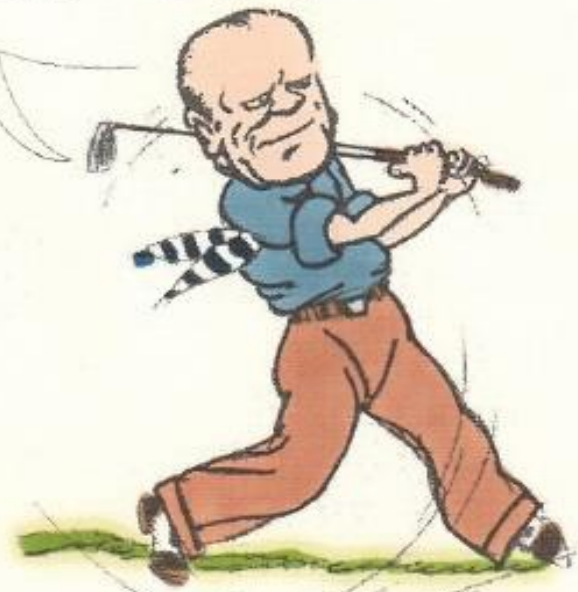


ARMSTRONG CACHET



There's No Place
OzFest Station
Chittenango, N.Y. 13037
June 4, 2005

FOR - D !



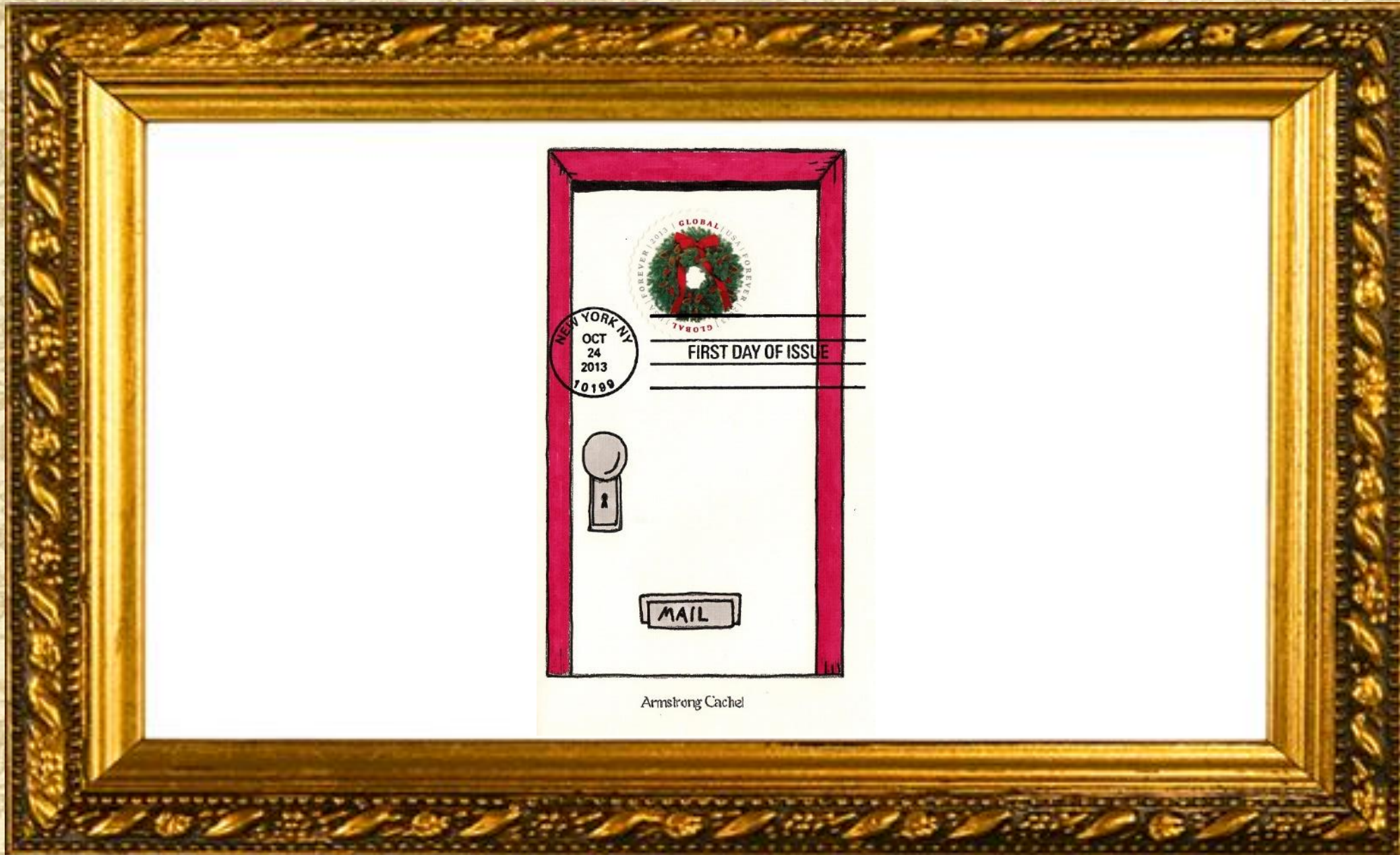
ARMSTRONG CACHET



RANCHO MIRAGE CA
AUG 31
2007
92270



FIRST DAY OF ISSUE



NEW YORK NY
OCT
24
2013
70189



FIRST DAY OF ISSUE



MAIL

Armstrong Cachet

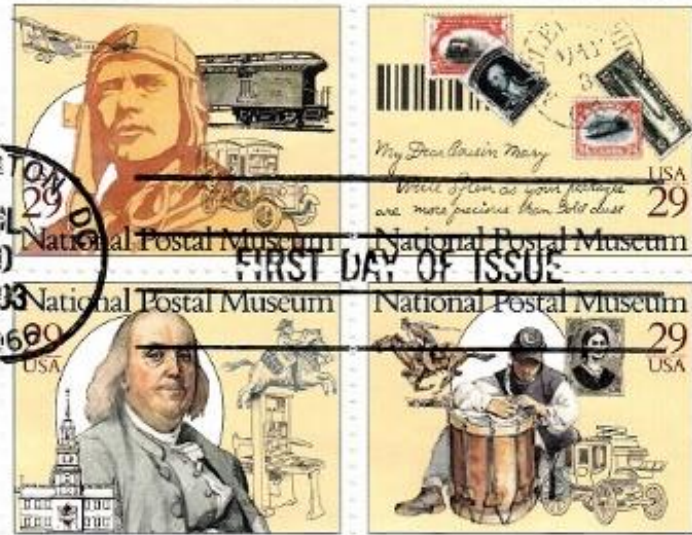


FIRST DAY OF ISSUE

Here is a selection of my favorite add-on cachets.

- 1993 National Postal Museum**
- 1998 American Folk Musicians**
- 1999 American Glass**
- 1999 Celebrate the Century- Slinky**
- 2007 Love stamp-KISS**
- 2009 Edgar Alan Poe**
- 2014 Purple Heart**

Smithsonian



PHILATELY

FOLK MUSIC



FIRST DAY OF ISSUE

BLOWN
AWAY



CORNWALL, NY
JUN
29
1999
74830

FIRST DAY OF ISSUE

吹瓶



FIRST DAY
OF ISSUE
1940s

33
USA

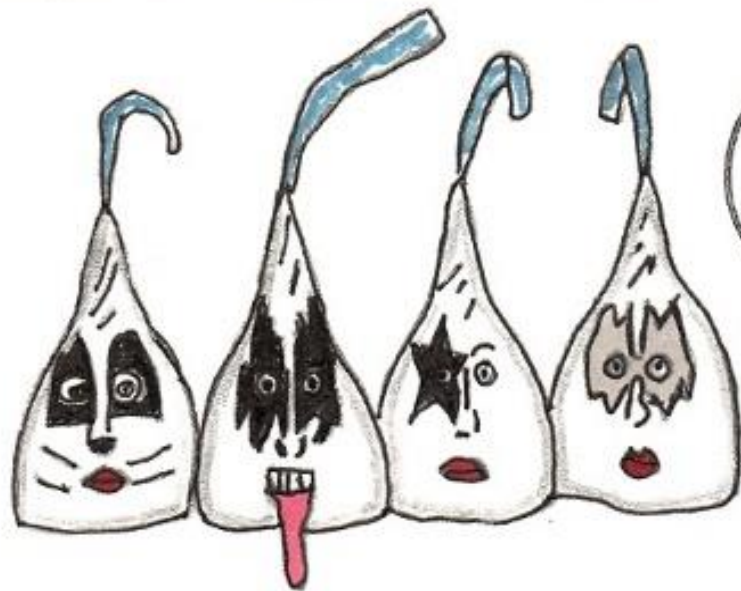


Slinky Craze Begins 1945



Slinky

KISS



FIRST DAY OF ISSUE



FIRST DAY OF ISSUE

EDGAR **POE** ALLAN

RICHMOND, VA 23282 | JANUARY 16, 2009



FREEDOM
★
ISN'T FREE ★



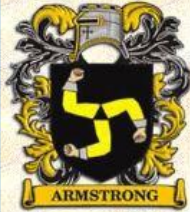
FIRST DAY OF ISSUE

I hope you've enjoyed this brief glimpse into my cachet-making ventures.

Check out my web site when you get a chance

to see more: **ARMSTRONG
CACHETS**

<http://www.armstrongcachets.com>



**ARMSTRONG
CACHETS**

Covers with class!

2000 2001 2002 2003 2004
2005 2006 2007 2008 2009
2010 2011 2012 2013 2014
2015 2016 2017 2018

Order Links Me

Welcome to my web site! Presented here are a variety of my limited edition cacheted first day and commemorative covers. Take a look!
I'm also available to create *your* very own special cover!

A list of unique add-on cachets is available upon request.

Kelly Armstrong
P.O. Box 24663
Rochester, NY 14624-4663
USA

Email
karmstr2@rochester.rr.com

Time for a ...



Design and Layout by Tom Fortunato

