



**NY  
2016**

*All About...*

# World Stamp Show-NY 2016

May 28-June 4, 2016

Javits Center, 655 West 34th Street  
New York City

[www.ny2016.org](http://www.ny2016.org)

[info@ny2016.org](mailto:info@ny2016.org)



*Pinterest*

YouTube

# Featuring...

- \* Free Admission
- \* Dealers and Postal Administrations from around the world
- \* First Day ceremonies by the USPS, UNPA, and others
- \* Seldom seen rarities worth millions
- \* 4,500 frames of competitive and non-competitive exhibits
- \* Hundreds of seminars open to the public
- \* Specialty Society Representatives
- \* Special youth and beginner's pavilion
- \* Free reviews of stamps, collections, philatelic material
- \* And much, much more!



Our web site at [www.ny2016.org](http://www.ny2016.org) should be your first stop in learning the latest about World Stamp Show-NY 2016.

The screenshot shows the homepage of the World Stamp Show NY 2016 website. At the top left is the logo featuring the Statue of Liberty and the text "World Stamp Show NY 2016". To the right, it says "World Stamp Show NY2016" and "May 28-June 4, 2016 Javits Center". A banner on the right says "Be a Part of History." with a postage stamp featuring the Empire State Building. Below the banner is a navigation menu with links: "Log In / Register", "Visitor Info", "Show Info", "Bourse", "Exhibits", "Societies", "Donate", "Stamp Collecting", and "Choose Language".

On the left side, there is a countdown timer showing "04 19 04 17 18" (4 yrs, 19 mths, 04 days, 17 hrs, 18 secs) and a "Newsletter No. 10 Six Months to Go!" with a "Click Here to view" link. Below that, it says "WSS-NY 2016 promotional stamp designs unveiled." with two small stamp images and another "Click Here to view" link. At the bottom left is a "Your Account" link.

The main content area features a large image of the Statue of Liberty's head with multilingual greetings: "Welcome! Bienvenue 欢迎你来 Welkom Yōkoso أهلا وسهلا ยินดีต้อนรับ Καλώς ήρθατε selamat datang". Below this image are two promotional links: "Hotel Reservations now available.....CLICK HERE" and "Delta Air Lines Discount Airfare now available.....CLICK HERE".

On the right side, there are social media icons for Facebook, Twitter, Pinterest, YouTube, and a search icon. Below these is a vertical advertisement for "Michael Eastick Covers Associates" featuring an image of the Sydney Opera House and the text "REVENUES America's Largest Stock Over 35,000 Items!".





Every decade since 1913 the United States has hosted a giant international stamp show.



(photo: Washington 2006 stamp show)



The next one, World Stamp Show-NY 2016, takes place May 28 through June 4 at the Javits Center in New York City. Admission is free and some 250,000 people are expected to attend this 8 day extravaganza.



# How did it all begin?

Here in the U.S. the American Philatelic Society organizes the host city selection process by first sending out a request for proposals from interested collecting groups. These proposals are reviewed by the APS Board, which then invites qualified candidate groups to make a formal presentation before it makes its final selection.

This process began in 2005 for the 2016 international show!





The APS Board voted to accept the hosting proposal from the New York City organizing committee, headed by members of the prestigious Collectors Club.

**NY 2016**

### Why New York City?

- 1) Population Density +
- 2) Attraction of Venue +
- 3) Ease of Access =

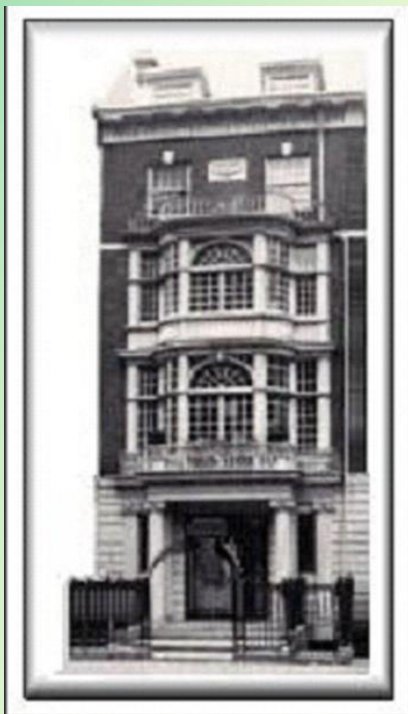
**Highest Attendance & Most Successful Show**



One of their presentation slides summed up an equation to a successful show. These positive attributes all hold true more than a decade later as NYC awaits you!



CCNY's historical ties to prior internationals is a testament to some of philately's greats of the past.



The Philatelic Foundation 



NY2016

- 1) New York staged the first 5 US Internationals 1913-1956
- 2) "...It was for this reason that the Foundation was born... as an educational institution. That's what the charter of The Philatelic Foundation is all about... To some people, we are only here to expertise, but the two go hand-in-hand. -- Lou Grunin, former Chairman of the PF ..."
- 3) Increase Awareness and Financial Support of the Philatelic Foundation

## Our Philatelic Heritage

By Randy L. Neil

In an especially wise move, the Board of Directors of the American Philatelic Society recently voted to allow the 2016 U.S. international exhibition to be staged in New York City under the direction of a committee spearheaded by members of the **Collectors Club of New York**. It will bring this great show back to its birthplace after a 60-year absence!

A great deal of the rich heritage of our hobby can be traced back to the early work of the **Collectors Club of New York**.

Take a look at the picture at right. Great philatelists (like **John N. Luff**, top middle) of the **CCNY** assembled in 1926 to stage America's Second International Philatelic Exhibition in New York—a show which set the standards for all future stamp shows in the U.S. Consisting mainly of **CCNY** members, the directing committee for this show (at which the White Plains souvenir sheet was issued) reads like a Who's Who among the top luminaries of philately.

Held at New York City's old Grand Central Palace on Oct. 16-23, 1926, this great event brought together the most important stamp collectors and collections from around the world. To do this, the **CCNY** members formed the Association for Stamp Exhibitions, Inc., a group which went on to stage subsequent international shows in 1936, 1947, and 1956.

In 1971—and again in 1996 during the club's 100th anniversary—the **CCNY** organizational talents brought forth the **ANPHILEX** shows at New York's Waldorf-Astoria Hotel. In keeping with their tradition, they again set the pace by producing events of the very highest level. I was there on both occasions and also at FIPEX in 1956. There's no better place in the world for a stamp exhibition than **New York City!**





And so the stage is set for this century's second great U.S. international stamp exhibition and 11<sup>th</sup> in our nation's history. From the very beginning the iconic Statue of Liberty was planned to be the central symbol of the event.

The show's original logo was designed in 2006 and used through 2013 when it was replaced by an image created by Niko Courtelis, WSS-NY 2016 Design Chair.







Admission is completely free, but we do ask that whenever possible please register in advance to avoid the long lines at check in, especially the first weekend of the show. Our web site will feature a special link to registration by late March.

Concerned about getting around? Don't be! Public transport is just around the corner everywhere—inexpensive and safe!

Subway and Bus local fare: \$2.75, 7-day Unlimited Metropass: \$31

Metered Taxi fare: varies. Up to 4 riders, same price.

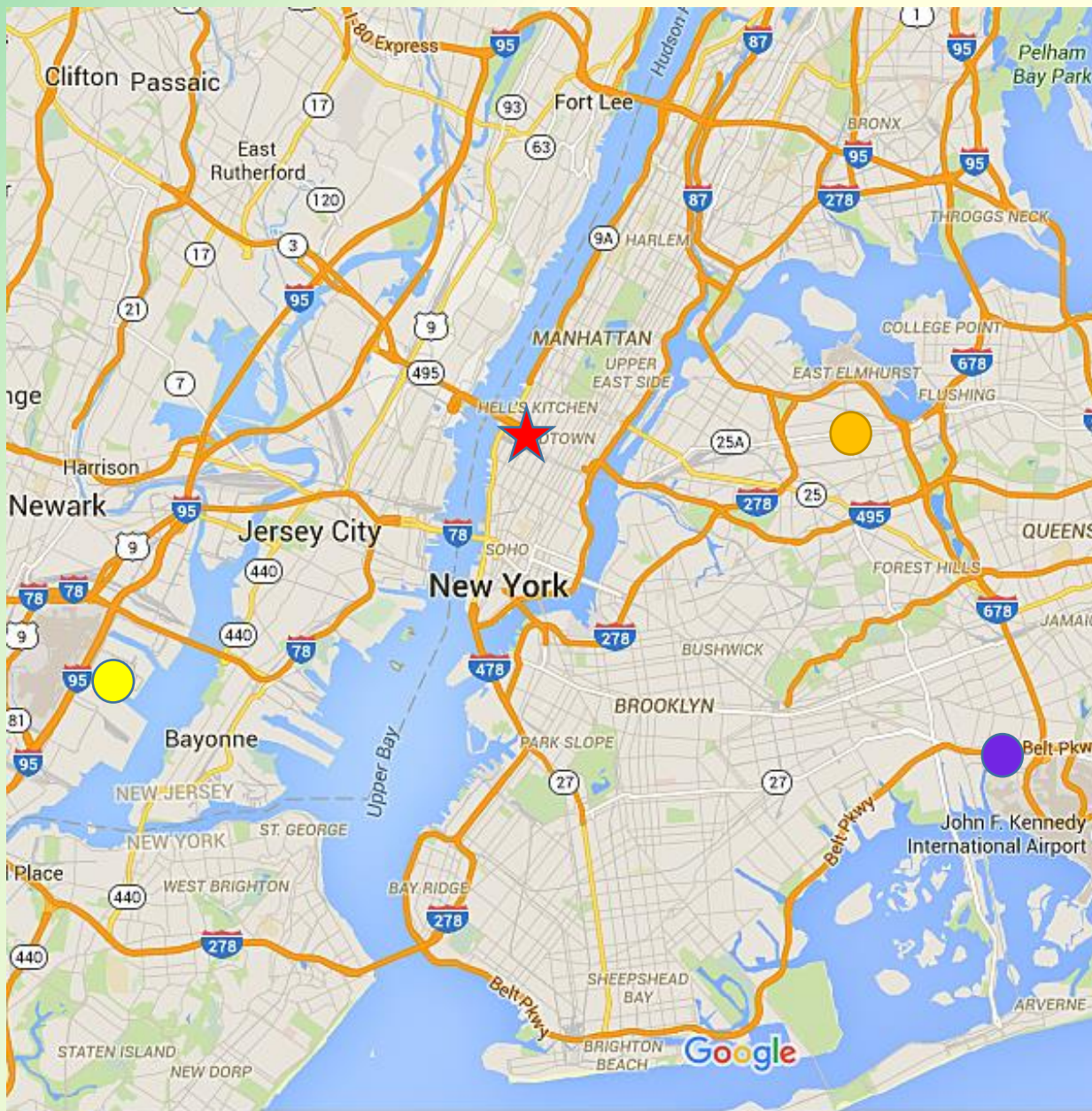
*Senior fares may be available.*



*Average 3 mile cab fare: \$10*







Everything will happen at the Javits Center ★ in Manhattan, easily accessible from any of the three airports throughout the region.

- Newark Liberty Airport (15 miles)
- LaGuardia Airport (9 miles)
- Kennedy Airport (18 miles)



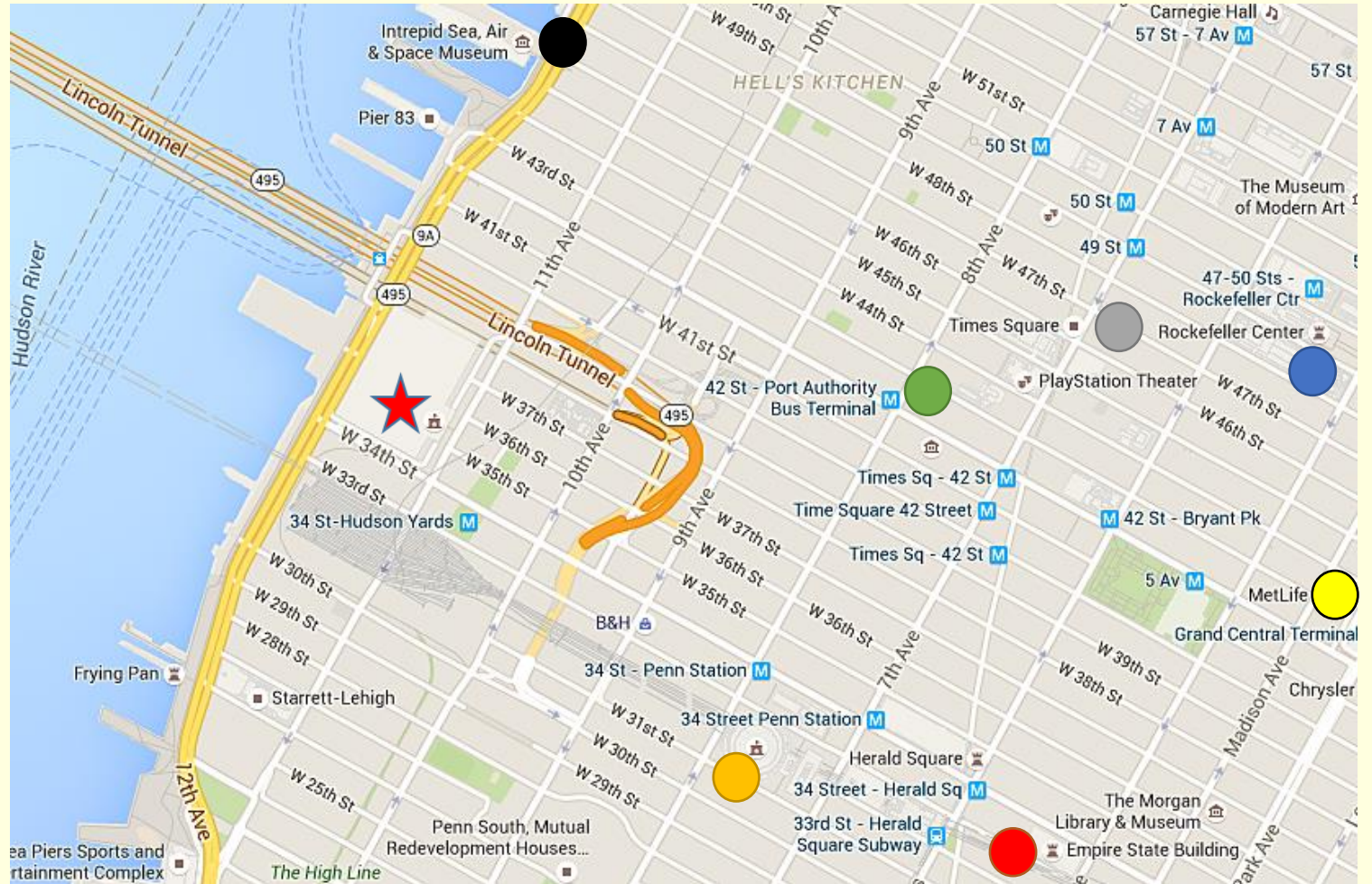
Delta is our official air carrier. See our website for discount details.



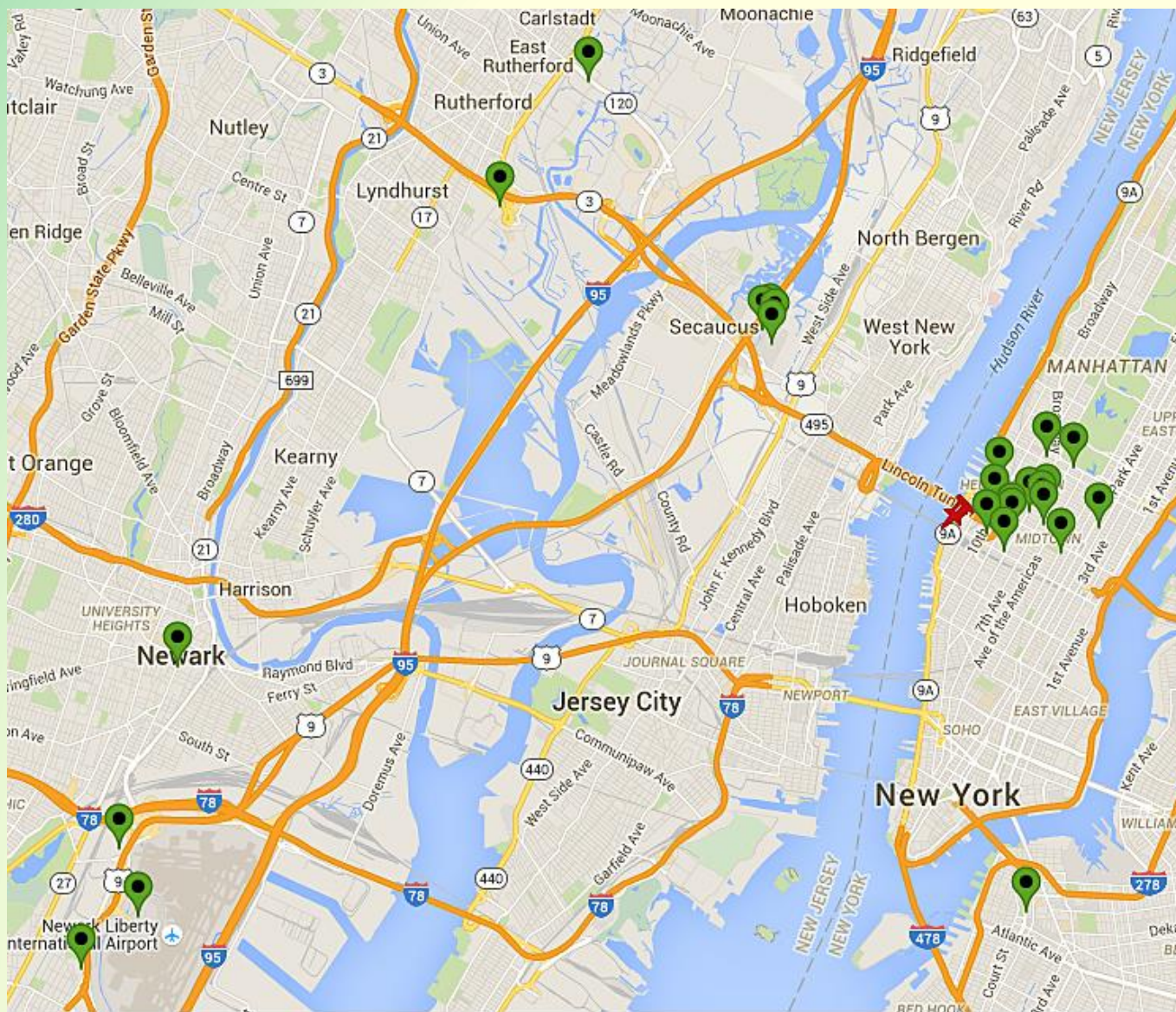
It's also easy to reach by train, bus or subway, and is close to the major attractions every visitor wants to see. (M=Metro stop below)

- Port Authority Bus Terminal  
(1.2 miles away)
- Penn Station  
(1 mile away)
- Times Square  
(1.2 miles away)
- Rockefeller Center  
(1.3 miles away)
- Empire State Bldg  
(1.3 miles away)
- Grand Central  
(1.3 miles away)
- USS Intrepid  
(0.8 miles away)

Walking distances  
average 1.2 miles/30 minutes



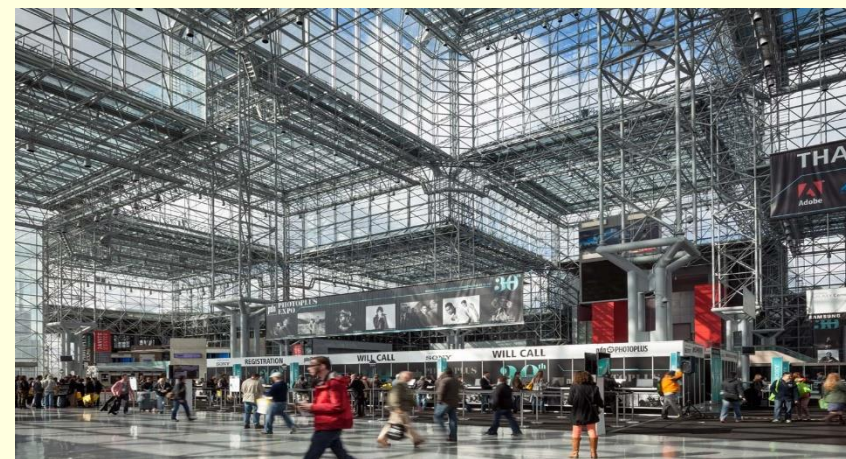


**NY  
2016**

Need a place to stay? Discounts are available through WSS-NY's hotel consolidator to 25 hotels from \$99 to \$359 nightly, offered through the link on the show web site.

HQ Hotel: Marriott Marquis  
1535 Broadway

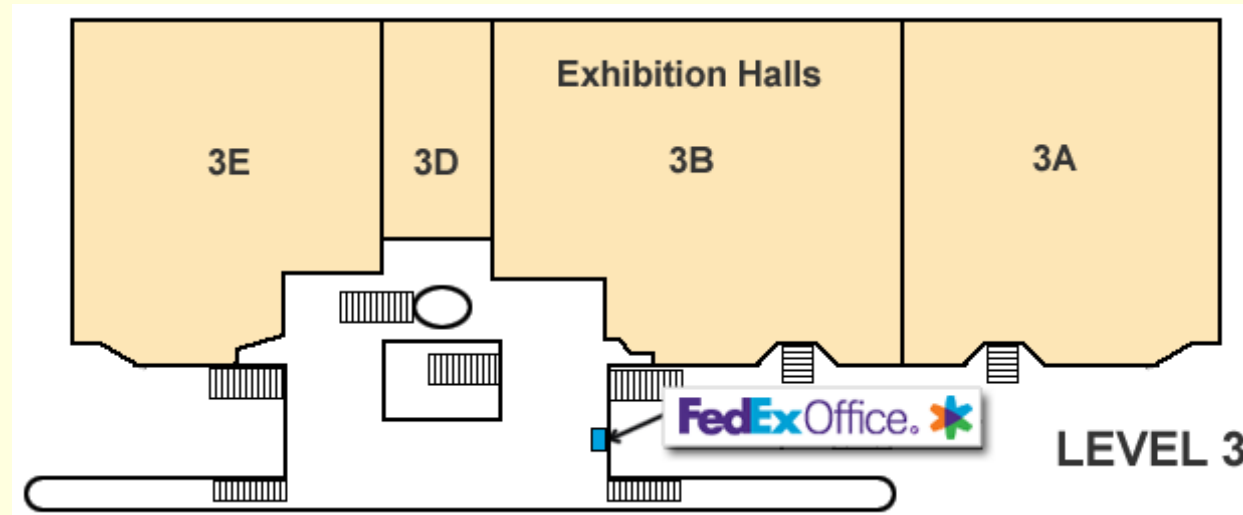




The Javits Center now has its own subway stop across the street. It is fully handicap accessible. Wheelchairs and motorized scooters are available for rental in advance.



Follow the WSS-NY 2016 signs on your arrival to the Javits Center. The third floor is actually on ground level! Once there, check into the show registration area. Everyone will need to wear an admissions badge at all times to enter the show floor, which occupies 294,000 square feet in halls 3B, 3D and 3E.





Here is a more detailed look at the show draft as of late January. The red area is for dealers, blue for post offices and yellow for societies. Most of the exhibit area is not shown.



Dealers are a major attraction of every international exhibition. Those attending WSS-NY 2016 so far come from 21 countries (USA, Australia, Bangladesh, Belgium, Canada, China, Finland, France, Germany, Greece, Hong Kong, Italy, Netherlands, New Zealand, South Africa, Spain, Sweden, Switzerland, Thailand, United Kingdom, and Vietnam).

They will be selling material ranging from the common to the very rare, bringing items of interest to a wide range of collectors. *They are also interested in buying!*



**NY  
2016**





May 30, 2016

Auktionshaus Christoph Gartner GMBH& Co

May 31, 2016

Robert A. Siegel Auction Galleries

June 1, 2016

Schuyler J. Rumsey Philatelic Auctions

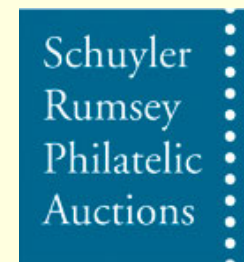
June 2, 2016

Daniel F. Kelleher Auctions, LLC

June 3, 2016

The Global Philatelic Network Rarities Auction  
H.R. Harmer in cooperation with Corinphila,  
Heinrich Köhler and John Bull

The world's premier auction firms have scheduled five major auctions beginning on Monday.





U. S. Postal Service  
 UN Postal Administration  
 Aland  
 Antigua & Barbuda\*  
 Armenia  
 Australia  
 Austria  
 Bermuda\*  
 Brunei\*  
 Canada  
 Cape Verde\*  
 Central African Rep.\*  
 China  
 Chinese Taipei  
 Croatia  
 Faroe Islands\*  
 Finland\*  
 French Polynesia

Gambia\*  
 Georgia  
 Germany  
 Ghana\*  
 Gibraltar  
 Great Britain\*  
 Greenland\*  
 Grenada & the Grenadines\*  
 Guernsey  
 Guinea\*  
 Guinea-Bissau\*  
 Guyana\*  
 India  
 Indonesia  
 Israel\*  
 Jersey\*  
 Liberia\*  
 Liechtenstein\*

Luxembourg  
 Maldives\*  
 Mozambique\*  
 Netherlands\*  
 Nevis\*  
 Niger\*  
 Norway\*  
 Palau\*  
 Qatar\*  
 Romania  
 Sao Tome & Principe\*  
 Sierra Leone\*  
 Solomon Islands\*  
 St. Kitts\*  
 St. Vincent & the Grenadines\*  
 Togo\*  
 Tuvalu\*

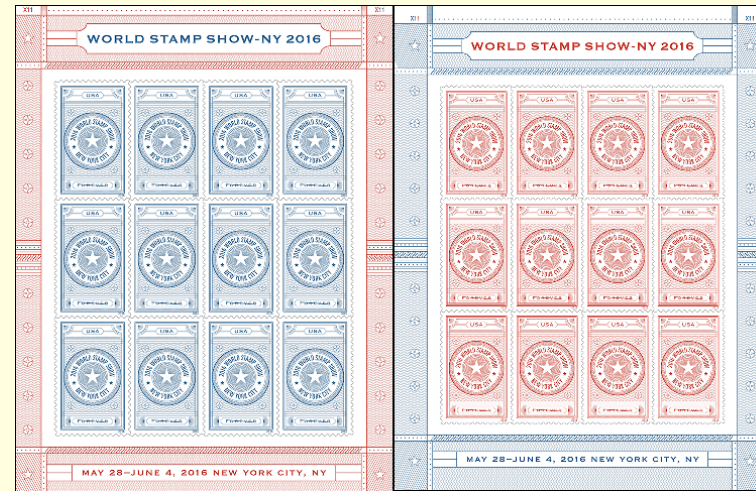


\*Agency Representation  
 Additional countries expected

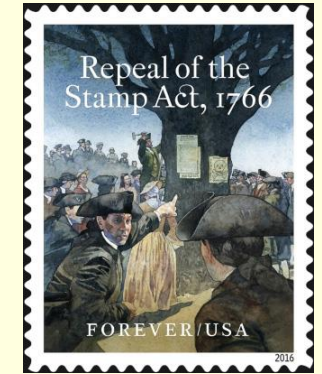
Major sponsor, the United States Postal Service, heads the list of postal administrations coming to WSS-NY 2016.



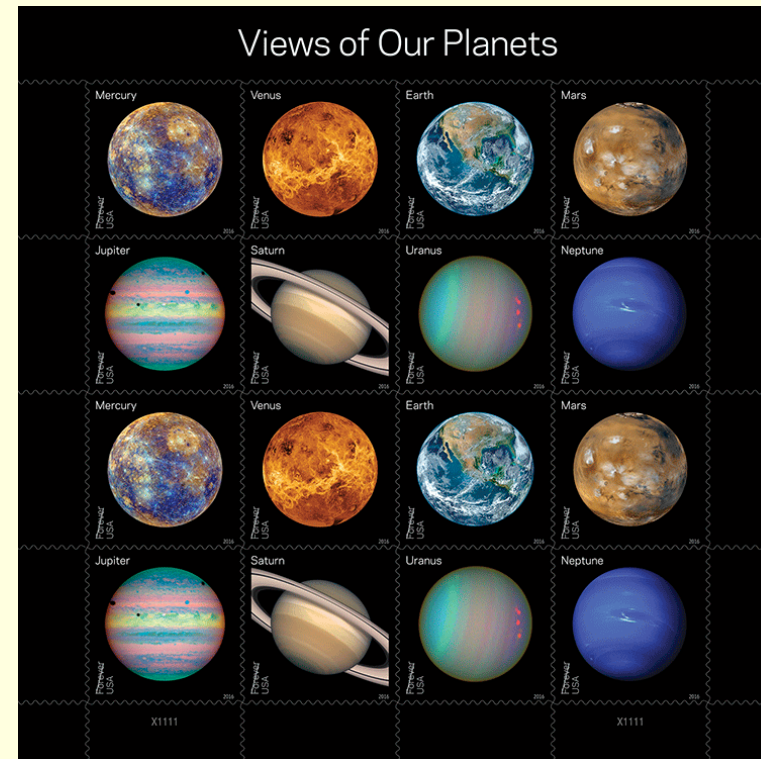
Collectors look forward to the many free first day ceremonies and souvenirs the host country and others arrange to announce and promote their newest stamps. Here are a few of the U. S. stamps to be issued each day during the show.



WSS-NY 2016 dual sheets



Stamp Act Repeal

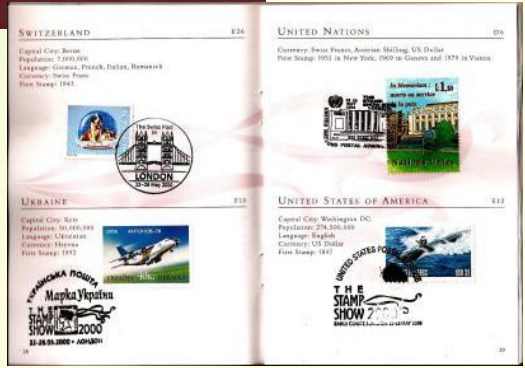
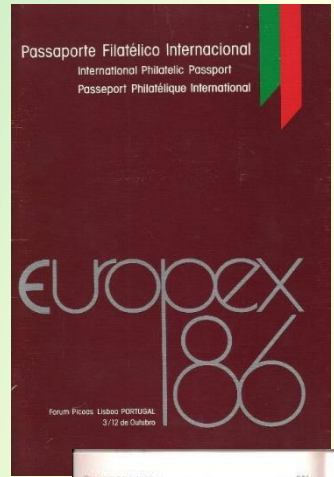


The Planets and Pluto



A tradition at internationals, visitors stop by each postal administration's booth, select a stamp of their choice, place it in their free "philatelic passport" and get it postmarked with a special cancellation. Get yours at WSS-NY 2016.

World Stamp Show



Over 112 different stamp collecting organizations and societies will be taking part in the show by hosting society booths and/or making presentations through all 8 days.

Presentations and meetings along with all other events can be found on the web site through a listing and a daily events sheet like that seen here. The majority are open to the public, but the few that are not are so marked.

Hall E Room Assignments, World Stamp Show-NY 2016, Day 2 Sunday, May 29

Room	8am	9am	10am	10:30am	11am	12noon	1pm/1:00	2pm/14:00	3pm/15:00	4pm/16:00	5pm/17:00	
1E06	Theaterpodium/ front table exhibit name & projector 100 cap		India Study Circle/Nepal & Tibet Philatelic Study Circle - General Meeting			India Study Circle - General Meeting	Cinderella Stamp Club of Great Britain - General Meeting		International Society of Worldwide Stamp Collectors - "Yes, You CAN Collect the World"			
1E07	Theaterpodium/ front table exhibit name & projector 140 cap		Society of Israel Philatelists - General Membership Meeting	Canal Zone Study Group - General Meeting		British North America Philatelic Society - Cross-Border Mail Between U.S. - Canada 1851-1875	Polonus Philatelic Society - Introduction to Collecting Poland	American Air Mail Society - Seminar	Iran Philatelic Study Group - General Meeting			
1E08	Theaterpodium/ front table projector 200 cap	United States Stamp Society - Board Meeting closed	Colombia-Panama Philatelic Study Group - (CACP) The First Issues	The Christmas Seal & Charity Stamp Club - Early History of Christmas Seals			United States Stamp Society - General Membership Meeting	U.S. Philatelic Classic Society - What Controlled the World's Maritime Mail Routes in the Pre-Steam Era	Philatelic Foundation - "High Tech Comes to the Exciting Process"			
1E09	Theaterpodium/ front table projector & exhibit theme cap 140			Society of Israel Philatelists - Postal Rates, Postmarks, and Stamps of Three Governments in the Holy Land during 1948								
1E10	Theaterpodium/ front table 200 cap								United Postal Stationery Society - Board Meeting			
1E11	Theaterpodium/ front table projector 150 cap			Carlo-Philatelic Society - Maps on Stamps by Miklos Pinter and "Don't Like the Stamp" by Martin Oakes			Society of Israel Philatelists - Pastime Study Group Introduction to the stamps of Palestine under the British Mandate	Linn's Stamp News - State of the Stamp Hobby	Zepplin Study Group - Zepplins and New York			
1E12	Classroom/ projector & exhibit name 75 cap											
1E13	Classroom/ projector 200 cap	RESERVED FOR USPS										
1E14	Classroom/ projector 75 cap											
1E16	Theaterpodium/ front table projector 200 cap			Society for Thai Philately - An Introduction to the Philately of Thailand	Society for Thai Philately - Collecting Thailand's 1930 "Scouts Fund" Overprints		National Duck Stamp Collectors Society - Duck Stamp Overview	National Duck Stamp Collectors Society - General Meeting	The Westfield Stamp Club Comes to World Stamp Show			
1E18	Classroom/ projector 70 cap			Stamp Collecting 101 by Don Chenevert - registration required				Presealnet Society - Intermediate and Advanced Practical Collecting by Phil Cayford	I Am a Beginner, Not a Child! Suggestions for the New Collector by Michael Bloom			
1E17	Classroom/ projector 40 cap			Mexico Elmhurst Philatelic Society International - Seminar Exhibiting 121 Traditional & Postal History by Omar Roaquez	Hong Kong Study Circle Circle - General Meeting		International Society of Japanese Philatelists - General Meeting	International Society of Japanese Philatelists - Exploring the World of Japanese Stamps	Youth Workshop			
1E18	Classroom/ projector & exhibit name 85 cap			Podler Stamp Collectors Club - General Meeting	Podler Label Study Group - General Meeting			Society of Indo-China Philatelists - General Meeting	Society for Thai Philately - General Meeting			
1E19	Theaterpodium/ front table projector classroom projector 85 cap			Spanish Philatelic Society - Annual Meeting	British North America Philatelic Society - Union-Confederate Cross-Border Communications During U.S. Civil War			Souls on Stamps Society International - (SOSSI) AGM	Souls on Stamps Society International - Seminar			
1E20	Theaterpodium/ front table projector 125 cap			Boy Scout Workshop - registration required								
1E21	Theaterpodium/ front table projector 125 cap								ESPER (Ebony Society of Philatelists Events and Reflections) - General Meeting closed			

OFFSITE and AFTER HOURS EVENTS  
 TIME TBA American Philatelic Society Tiffany Honor, exhibits TBA, Contact TBA





**NY  
2016**

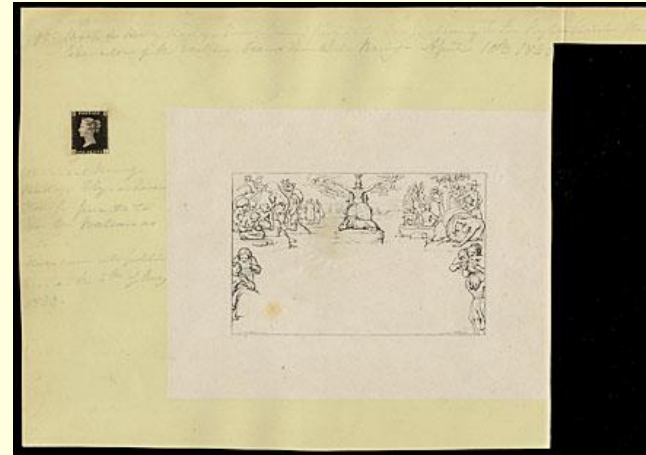
Do you know the difference between a stamp show and a stamp exhibition? Exhibits—and we have 4,500 frames! International exhibitions are in fact the highest level of such displays. Portions of the world's best collections can be seen, some in competition vying for medals and prizes.



The prizes are donated by individuals, societies and organizations and awarded by the jury for merit. In most cases they are objet d'art or collectibles representative of the host or donor nation.



Also being shown will be Court of Honor and invited exhibits. Among these will be seldom seen stamp rarities, including some even non-collectors know of. Like fine art, they are unique in some cases and worth millions. Come see them!



1840 "Wallace" Penny Black and Mulready



1856 British Guiana 1 cent Magenta



1918 Inverted Jenny Airmail



1845 New York Postmaster Provisionals on cover

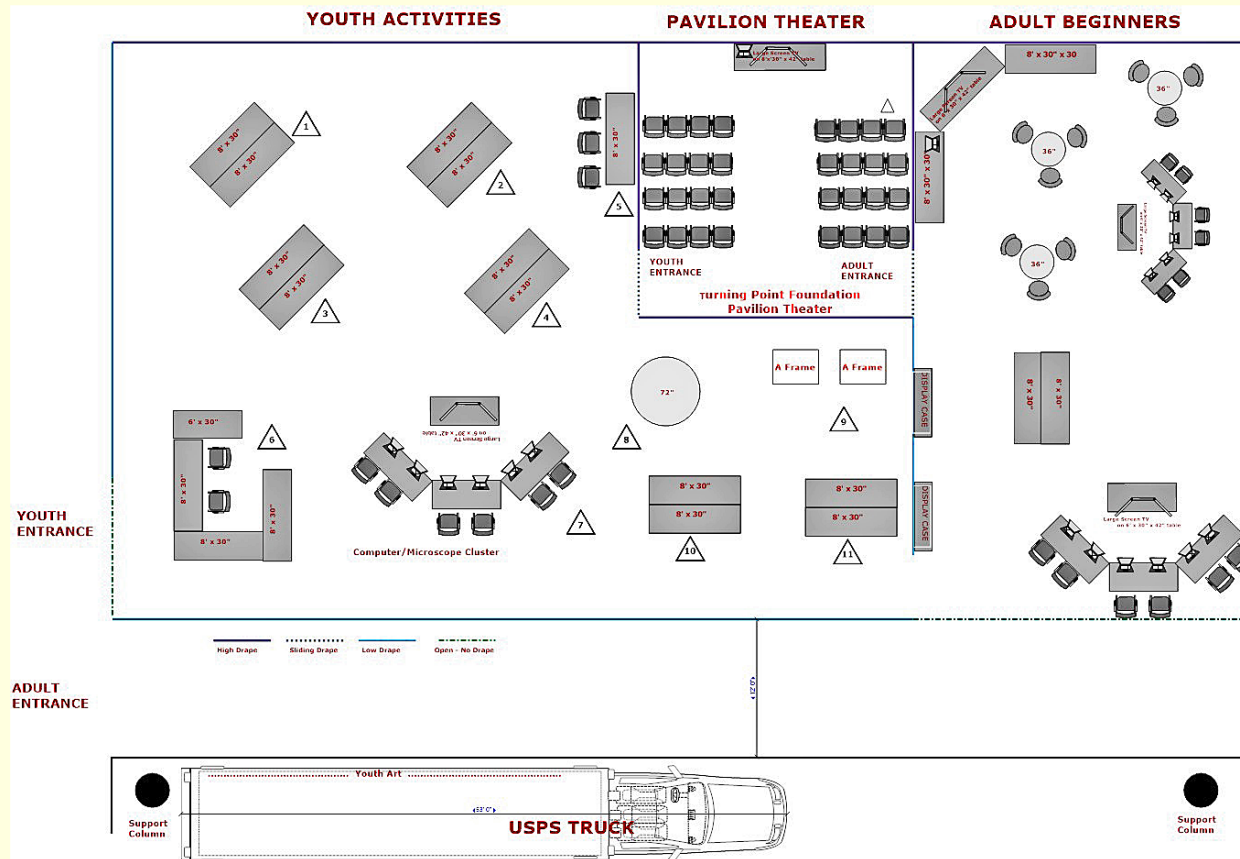




Philately is a hobby for young and old alike. The show's "Welcome to Stamp Collecting" Pavilion is the place where all can learn the basics through interactive demonstrations, games, activities and more. Advance reservations are needed for school and youth groups over 10. Boy Scout workshops are additionally being offered. Contact us if interested.



The 32 seat “TurningPoint Foundation Pavilion Theater” will have both youth and adult sections with special audio/visual presentations planned every day for each group.



**NY  
2016**

So plan your trip now and bring along your family and friends, whether they be collectors or not.

What better place to hold such a spectacular exhibition than the Big Apple! The “City that Never Sleeps” has something for everyone including not-to-miss attractions, Broadway shows, and food choices to satisfy everyone’s taste buds and budget.



Speaking of budget, don't think you can afford a trip to New York City? Think again!

Here are two sample budgets for a visitor traveling from 250 miles away, including round trip bus transportation, with food and lodging.

Example One: Day Trip from Central Pennsylvania:

MegaBus - round trip (average).....	<b>\$90.00</b>
Meals: Breakfast at a Subway or Deli.....	<b>\$10.00</b>
Javits Center Lunch.....	<b>\$10.00</b>
Dinner @ Restaurant.....	<b>\$25.00</b>
	<b>TOTAL: \$135.00</b>

Example Two: 2-Day Trip from Central Pennsylvania:

MegaBus - round trip (average).....	<b>\$90.00</b>
HQ Hotel (Marriot Marquis Time Square)..	<b>\$323.65</b>
Subway to/from the Javits Center x 2 days... .	<b>\$11.00</b>
Meals: Breakfast \$10 x 2 days.....	<b>\$20.00</b>
Javits Center Lunch \$10 x 2 days.....	<b>\$20.00</b>
Dinner @ Restaurant \$25 x 2 days... .	<b>\$50.00</b>
hotel rates include taxes	<b>TOTAL: \$514.65</b>

Go with a friend, split the hotel bill: \$352.83  
Stay at a \$139 hotel instead with a friend: \$273.01

Bottom Line:  
You can make your trip an inexpensive adventure!





**NY  
2016**

# Won't you join us?

We welcome your  
comments and questions!

Toll-free (844)977-2016

[www.ny2016.org](http://www.ny2016.org)

[info@ny2016.org](mailto:info@ny2016.org)

*Why wait for the next US international  
exhibition in Boston in 2026? Come in 2016!*