

2015 RPA STAMP OLYMPIAD

MARCH 26, 2015



Yearly stamp quiz by Fred Haynes of 20 philatelic questions.
Check the answers at the end to see if you were right!

1

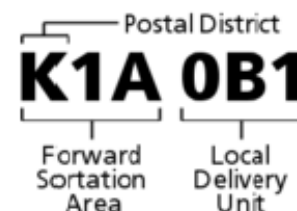
What country issued these two stamps in the year 1900 ?

- A. Cyprus
- B. Greece
- C. Albania
- D. Macedonia
- E. Crete



2

The United States introduced zip codes in 1963. When did Canada introduce its 6-character postal code ?



- A. 1965
- B. 1971
- C. 1973
- D. 1975
- E. 1979

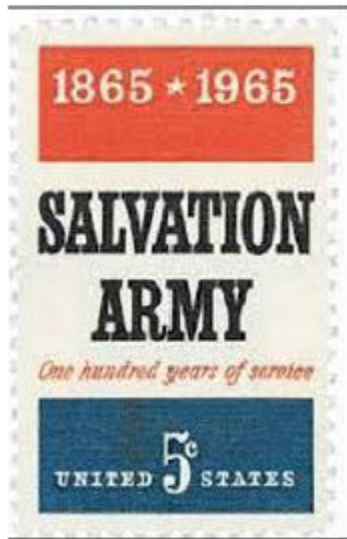
3

It cost 4 cents to mail a Christmas card in 1958 by ground mail. How much did it cost to send a card by air mail or air letter?

- A. 4 cents
- B. 5 cents
- C. 6 cents
- D. 7 cents
- E. 8 cents

4

Which U.S. stamp will celebrate its 50th anniversary in less than one week's time?



A



B



C



D



E

5

How much postage is on this envelope ?



A. 46 cents

B. 49 cents

C. 51 cents

D. 53 cents

E. 56 cents

6

Who was the first U.S. Postmaster General ?

- A. Thomas Stone**
- B. Ben Franklin**
- C. John Hancock**
- D. Richard Bache**
- E. Thomas Jefferson**

7

The Gold Coast is no longer. What is the name of this country now?

- A. Liberia**
- B. Sierra Leone**
- C. Nigeria**
- D. Namibia**
- E. Ghana**



8

What is the longest running definitive stamp series of all time?

- A. Great Britain's Queen Elizabeth "Machin" series
- B. Norway's Posthorn series
- C. The United States Liberty series
- D. Italy's Italia series
- E. Belgium's Numeral series



A



B



C



D



E

9

Which Islamic country was the first to portray a person on their stamp?

- A. Persia**
- B. Egypt**
- C. Turkey**
- D. Eritrea**
- E. Tunisia**

10

The first U.S. stamp issued to honor the Olympics commemorated the 3rd Winter Games. Where were they held ?

- A. Chamonix, France**
- B. Squaw Valley, CA**
- C. Bavaria, Germany**
- D. Lake Placid, NY**
- E. St. Moritz, Switzerland**

11

How many different postage stamps did the U.S. issue in 2014?

- A. 87**
- B. 94**
- C. 102**
- D. 109**
- E. 116**



12

What is the sum of the postage in these three transportation coil stamps?

- A. 18.4 cents
- B. 21 cents
- C. 16.2 cents
- D. 17.2 cents
- E. 19.3 cents



13

In what year were these three transportation coil stamps issued ?

- A. 1980**
- B. 1982**
- C. 1983**
- D. 1984**
- E. 1986**

14

In 2000, the countries participating in issuing a Europa stamp on a yearly basis returned to a common design to celebrate the Millennium. How many countries participated that year ?



- A. 48
- B. 52
- C. 56
- D. 59
- E. 66

15

Which of these countries has a country map on its first stamp ?

- A. Democratic Republic of Congo**
- B. Australia**
- C. Djibouti**
- D. Greenland**
- E. Kenya**

16

We all can visualize the 1930 Graf Zeppelin air mail series. But, can we recall the denomination of the highest value stamp in the set?

A. \$1.30

B. \$2.20

C. \$2.40

D. \$2.60

E. \$3.20

17

Individual American Sports Heroes were not honored with stamps until 1981. Which two champions were honored on U.S. stamps in 1981.

- A. Jim Thorpe and Babe Ruth**
- B. Babe Ruth and Lou Gehrig**
- C. Babe Zaharias and Bobby Jones**
- D. Knute Rockne and Francis Ouimet**
- E. Jackie Robinson and Bobby Jones**

18

Which country issued the first Christmas Seal ?

- A. Denmark**
- B. Belgium**
- C. France**
- D. Sweden**
- E. Great Britain**

19

This 1986 stamp has two errors associated with its printing. The most common of these two errors is:

- A. black cancel is inverted**
- B. red 1886 date is missing**
- C. black cancel is missing**
- D. blue color is missing**
- E. Stamp Collecting printed in blue**



20



The Stamp Collecting Booklet issue of 1986 was a Joint Issue with what country?

- A. Belgium**
- B. Great Britain**
- C. Canada**
- D. Sweden**
- E. Spain**

Answer Key

1. E	6. B	11. E	16. D
2. B	7. E	12. D	17. C
3. D	8. B	13. B	18. A
4. E	9. A	14. C	19. C
5. D	10. D	15. B	20. D

Thanks for playing!