

THE  
MIKE FARRELL  
COLLECTION  
OF INDEPENDENT MAILS

INCLUDING THE HISTORY, FORGERIES, & FANTASIES OF  
UNITED STATES, LOCAL POSTS, CARRIERS,  
INDEPENDENT MAIL ROUTES, & EXPRESS CO.S

HOYT'S LETTER EXPRESS

The information and identification within these selections is the individual work of the Farrell Collection. It is always recommended to consult multiple sources for additional information or opinions. Local post company descriptions are based on information available at the time of writing. Descriptions in the Farrell Collection were written based on personal research and sources including, but not limited to: Articles in the Carriers and Locals Society's The Penny Post; Amos Media's Scott Catalogue; Patton's The Private Local Post of the United States; Springer's Handbook of North American Cinderella Stamps; Lyons' Identifier for Carriers, Locals, Fakes Forgeries and Bogus Posts of the United States; articles in the USPCS's The Chronicle; Mosher's Catalog of Private Express Labels and Stamps; The Eastern Independent Mail Company Study Group's Eastern Independent Mail Companies and Express Mail Companies 1840-1845; Elliot Perry's Pat Paragraphs; James N. Drummond's Catalog of Philatelic Miscellany; and the notes of George Sloane and Gordon Stimmell.

Colors listed for stamps and forgeries are the opinions of the Farrell Collection based on viewing physical copies of the pieces under consistent lighting. Colors in the .pdfs may be slightly inaccurate due to manipulations from the scanning process, computer monitor settings, or (in event that the files are printed for offline viewing) the printing process.

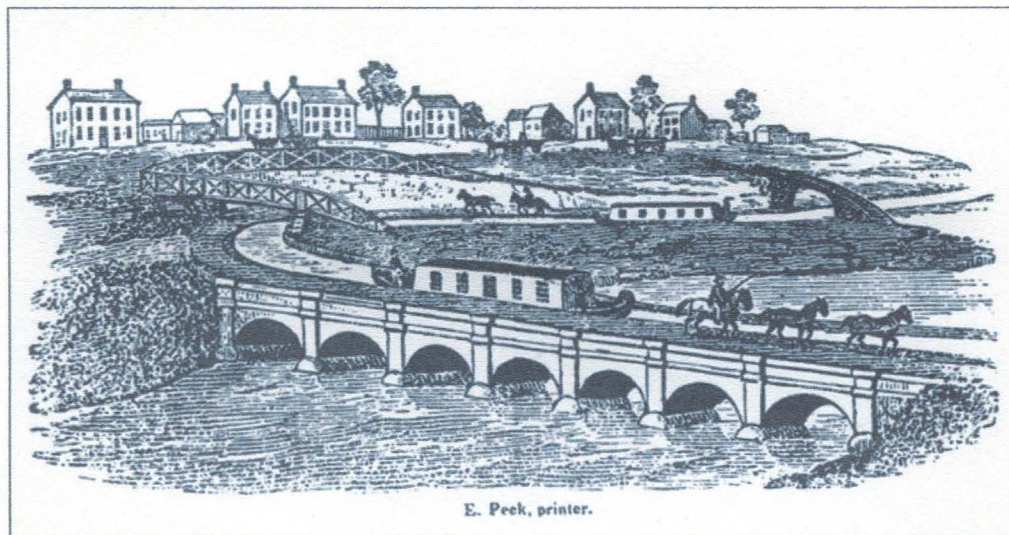
Unless otherwise noted, stamps are identified by their Scott Catalogue numbers and forgeries are identified by their Lyons Identifier type. Scott numbers in parenthesis under listed forgeries represent approximately what stamp the forgery is attempting to imitate.

Copyright Amos Media Company - 2019

The Scott Numbers are the copyrighted property of Amos Media Company, and are used here under a licensing agreement with Amos. The marks Scott and Scott's are Registered in the U.S. Patent and Trademark Office, and are trademarks of Amos Media Company. No use may be made of these marks or of material in this publication, which is reprinted from a copyrighted publication of Amos Media Company, without the express written permission of Amos Media Company, Sidney, Ohio 45365.

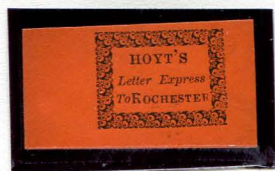
# HOYT'S LETTER EXPRESS

In 1844 David Hoyt, an agent for the Livingston, Wells & Pomeroy express company, ran his own letter and package express between Rochester and Dansville, New York. Hoyt utilized the Genesee Valley Canal, which first opened between the two cities in the fall of 1841. He made connections with other letter expresses such as Pomeroy. The post only lasted for a few months.

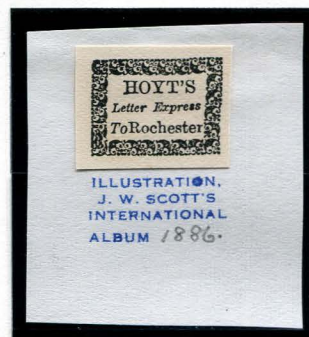


WOODCUT IMAGE OF THE AQUEDUCT FOR THE ERIE CANAL OVER THE GENESSEE RIVER IN ROCHESTER, PRINTED IN 1827.

Genuine Hoyt's stamps are rare. Only nine examples of the stamps are recorded to exist. Three different forgeries are known of the original design.



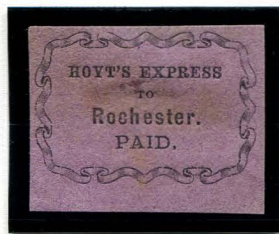
FORGERY A  
5¢ BLACK  
ON VERMILION SC  
(85L1)



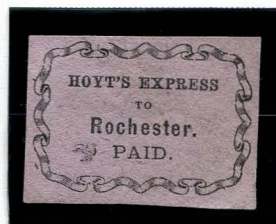
FORGERY C  
SCOTT  
5¢ BLACK  
ON CREAM  
ILLUSTRATION FROM  
1886 SCOTT ALBUM  
(85L1)

# HOYT'S LETTER EXPRESS

Two distinct designs of bogus stamp were produced using this post's name. These fakes are significantly larger than the genuine stamps and feature different decorative borders. The first is bordered by a ribbon.



**BOGUS 1**  
5¢ BLACK  
ON PURPLE

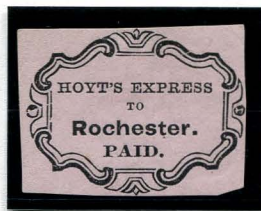


**BOGUS 1**  
5¢ BLACK  
ON LAVENDER

The second Hoyt's Express bogus was printed by S.A. Taylor. This design has a fancy border that looks like a picture frame.



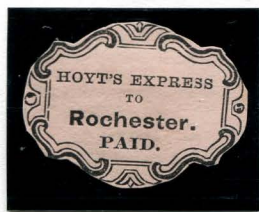
**BOGUS 2**  
TAYLOR - FORM AA20  
5¢ BLACK  
ON BLUE GRAY



**BOGUS 2**  
TAYLOR - FORM AA20  
5¢ BLACK  
ON PINKISH



**BOGUS 2**  
TAYLOR - FORM AA20  
5¢ BLACK  
ON PEACH



**BOGUS 2**  
TAYLOR - FORM AA20  
5¢ BLACK  
ON PEACH V. LAID



**BOGUS 2**  
TAYLOR - FORM AA20  
5¢ BLACK  
ON PALE PINK V. LAID