

ROPEX 2022 • RPA Meeting News
Linn's recognizes Nancy Clark
Lodi, NY cover • Rhodochrosite
Best and Worst of 2021
George Fekete

Copyright, 2022, Rochester Philatelic Association
Editor: Fred Haynes (fredmhaynes55@gmail.com)

The Rochester Philatelic Association, PO Box 10206 Brighton Station, Rochester, NY 14610 <http://www.rpastamps.org>

Plans for 2022 by Tom Fortunato

Plans for ROPEX continue towards May 20-21 at Greece Ridge Mall. Hours are 10-6 and 10-5, respectively. Setup is Thursday, May 19.

As of early March the following dealers are confirmed to attend: Dave & Joni Allego; Armstrong Cachets; Canterbury Stamps; Donofrio Philatelics; Doubleday Postal History; and E&L Coins. Some of our long-time dealers will not be with us. Ed Bailey has turned 90 years old and only does occasional shows in his native Syracuse. Harry Tong continues to battle health issues that prevent him from travelling. Ron Yeager of Bradford, PA is selling his business. I have not yet heard from Joyce Greco, but she, too, may have decided to retire from the hobby. Several high-end Great Britain items from her holdings were available through Siegel Auction 1226, lot 1745 in October, 2020. (see <https://siegelauctions.com/2020/1226/pdf/1745.pdf>) sold for \$2900. Outreach to coin, antique and other collectible dealers could potentially add to the mix.

Quotes from various printers are coming in for the 1,600 postcards expected to be ready by early April, in time for our first RPA meeting that month to begin the process of applying address labels and stamps to them. A second meeting may be necessary to complete the process! We have been fortunate to receive mint stamp donations to pay for the nearly \$650 mailing cost. The mall is making a few 8 foot tables and chairs available to us, but depending on the final dealer turnout we may be ordering more as needed from our regular supplier, Durand's Rent-All. An advertisement in Linn's and Coin World's show listings will begin to appear in April.


A trip down to our storage facility in Canandaigua is needed beforehand to collect electrical cords, supply boxes and some sales items. Our exhibit frames take up the bulk of that space and a discussion of their future should take place after ROPEX.

The RPA table will sell prior ROPEX covers from our inventory as well as a selection of items from our donated holdings. US and worldwide stamps for 10 cents each again should attract plenty of collectors. We'll have door prizes and expect to run a 50/50 raffle each day. Mary and John Iman will host a youth area on Saturday with games, giveaways and a twist on our previous Design-A-Stamp competition. Kids attending that day will be encouraged to create their artwork with a winner selected at the show's close to receive a \$25 prize.

Your help will be needed Thursday through Saturday! Tables, chairs and electrical cords need to be set up Thursday by mid-day along with the RPA sales table. Dealers are expected after 1 PM and can use assistance moving in. Friday and Saturday staffing of the RPA welcome and prize registration table, sales tables, and member-run security needs help, as will take-down at the show's close.

Details will be forthcoming as the show nears. While scaled down from prior shows, this one still should be fun for all, offering everyone the opportunity to buy material for their own collection while helping promote the RPA to the public at large.

George Fekete
January 21, 1944 – February 8, 2022
full obituary on pg. 6



RPA Meeting News

We are back to meeting twice a month in the JCC of Greater Rochester, 1200 Edgewood Avenue in Brighton. Buy/sell/trade runs from 7:00-7:30 followed by a formal meeting at 7:30.

If you can't attend in person, join us via a Zoom connection using the following link and login details at 7:30 PM most meeting nights: <https://us05web.zoom.us/j/7117955142?pwd=amR3Z1Z3L0d4bkJaNHdJUjBmbjFaQT09>, Meeting ID: 711 795 5142, Passcode: 9W3Mkg Note that Zoom connections last 40 minutes. On disconnection, click the meeting link again to rejoin the meeting in progress.

Upcoming RPA meetings:

March 10th Rochester Trivia Using Advertising Covers *by Tom Fortunato*

March 24th Program: TBA

April 14th ROPEX Preparation Night

April 28th ROPEX Preparation Night

May 12th and May 26th Program: TBA

As you can see we have openings for members to present. Just let Tom Fortunato know if you would like to share something with the club at any of the open dates this spring.

Linn's recognizes Nancy Clark

Long-time RPA member Nancy Clark has been recognized in Linn's Stamp News and Amos Media's "Most Influential Philatelists and their Epic Stories: 2022" issue dated March 21.

Quoting portions of the article, "The retired music teacher and church musician forged a philatelic path wherever she settled, whether it was Rochester, N.Y., Georgia, Massachusetts or the national stage. She's been an officer for the American Philatelic Society and the Spellman Museum of Stamps and Postal History. Clark is currently president of the Boston 2026 World Expo, the United States' every

10-year international stamp show." "She worked to upgrade youth collecting by starting stamp clubs at schools in Rochester and working with Boy Scout leaders to better focus the stamp collecting badge. It was her involvement with the Rochester Philatelic Society where she started to learn about judging, organized philately and how to run stamp shows."

Indeed, Nancy was very active while in Rochester, joining the RPA in 1978 and becoming an integral member of the ROPEX show committee for many years. She chaired the 1982 show at the Americana Rochester Hotel with joint themes honoring the 175th Anniversary of Fulton and 200th Anniversary of the U.S. Great Seal.



Nancy Clark with her buddy, Kermit the Frog, at the APS Stamp Show in Omaha, Nebraska, August 2019.

Congratulations to Nancy, now in her 44th year as a RPA life member!

Upcoming Show – March 12-13 BUFPEX–Buffalo Stamp Club

Knights Justin Hall
2735 Union Road, Cheektowaga, NY
Sat 10-4, Sun. 10-3, 12 dealers, exhibits
contact: Tim Carey, careystea@gmail.com

Flower Cover: Lodi, New York by Larry Rausch



I came across this unusual design and put on my investigative hat to solve the mystery of the “reverse flower” shown on this stunning August 1, 1880’s cover (Figure 2). Who created this flower and who was the addressee, Anna Caywood (Figure 1)?

The Town of Lodi is located in the most southerly part of Seneca County on the southeastern side of Seneca Lake. The town was established on February 8, 1820 and named DeMott’s Store. The town’s name was changed to Demott’s Corners on April 30, 1822. Finally on December 10, 1829 the name was changed to Lodi.

The clue to answer my questions comes from the last name of the addressee: Caywood. I reviewed the postmaster list and found that a Charles Caywood was a Lodi postmaster from 1885 to 1889 and the uncle to Anna. I surmised that Charles mailed this letter and created the hand stamp flower on the reverse. Coloring each of the circular date stamps (CDS) in the flower (Figure 3) enabled me to determine that the flower contained an amazing 68 hand stamps.

In the nineteenth century, there were three hamlets southwest of the village of Lodi: Lodi Center, Townsendville and Caywood: Each was a bustling hamlet with stores, and local businesses. Each had its own post office.

The hamlet of Caywood, established on March 23, 1893, was formed when a depot was built by the Lehigh Valley Railroad. Lodi and Caywood grew the best sweet hay which the railway shipped to New York city to feed the vast number of horses used in transportation. James Caywood, Charles’s brother, was an entrepreneur who developed the town of Caywood to fulfill this need for hay. Charles Caywood moved from Lodi to become the first Postmaster of Caywood in 1893. The Caywood post office closed February 28, 1934, but [Caywood Vineyards](#), established in 1860, remains open today.

References:

Lodi, NY Historian Robert Mark Brown
Ulysses Historical Society Dave Smith



Figure 1. 1880’s Lodi, New York cover addressed to Anna Caywood.

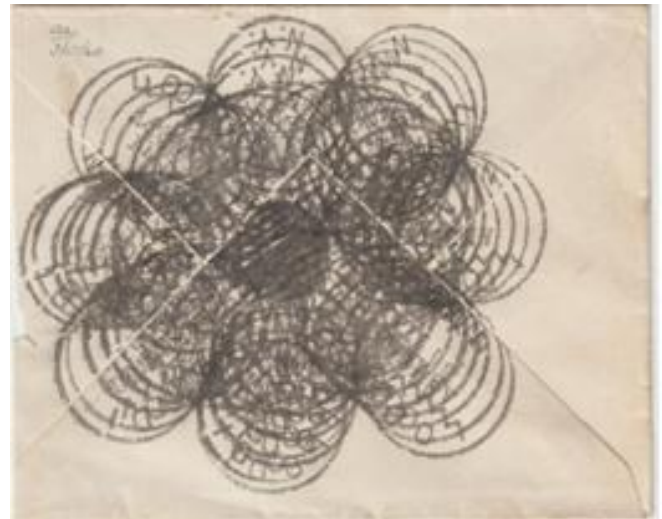


Figure 2. Hand stamp design on back of cover.

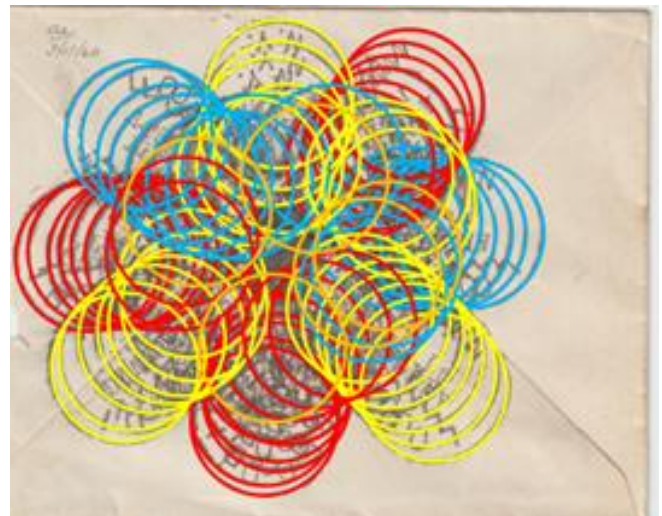


Figure 3. Colored hand stamps to permit counting,

Rhodochrosite: Two forms and two hobbies by Fred Haynes

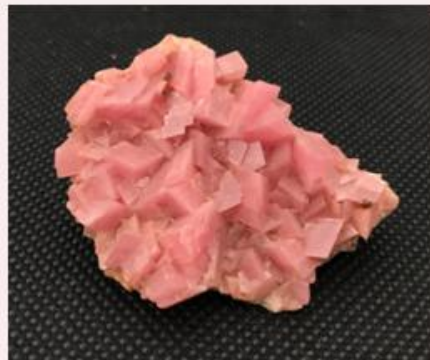
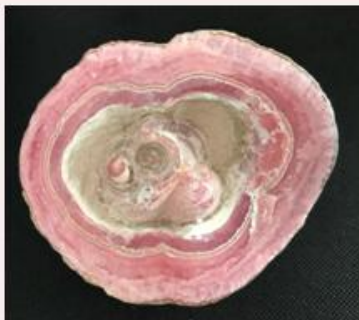
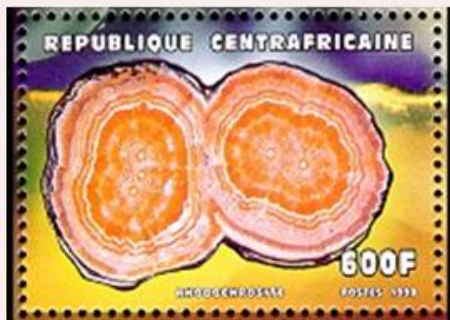
Many of you know that in addition to collecting minerals on little pieces of paper with perforated margins, I also collect the real things. Once in a while I like to compare my specimens with those depicted on stamps. Sometimes they even look similar.

Rhodochrosite is a manganese carbonate mineral (MnCO_3) that is prized by crystal collectors and lapidary artists for its form and rich color. Rhodochrosite can be deep red, but my specimens, both a cut and polished stalactite from Capillitas Mining District in northwestern Argentina and a crystal cluster from the Butte Mining District in Montana, are a pretty shade of pink. I acquired the Colorado specimen more than 30 years ago at the Tucson show. The Argentina piece was part of the WCGMC collection that I was fortunate enough to acquire just a few years ago.

As for the stamps, the United States diamond shaped stamp is part of a 4-stamp set issued in 1974 to commemorate our country's mineral heritage, Amethyst, tourmaline, and petrified wood are featured on the other ten-cent stamps, the first class postal rate at that time. The Central African Republic issued 12 stamps featuring colorful minerals in 1998. I cannot find

any documentation about the sources of the minerals on their stamps, but I am almost certain the rhodochrosite on the 600 franc stamp comes from the same Argentina location as my stalactite. The specimens from this location are truly unique and therefore also quite valuable..

Although my crystalline specimen from Butte, Montana is from a location almost 800 miles northwest of Alma, Colorado and the Sweet Home Mine, they sure do look alike. The color is similar and the clusters of 6-10mm rhombohedral crystals are almost a perfect match. In addition, both do come from western US mining districts with rich histories. The Alma District in Colorado was mined for silver in the second half of the 19th century. Butte saw a much longer and more varied mining history. From the mid 1860's until early in this century various mines opened and closed. The district is sometimes referred to as the Butte Au-Cu-Ag-Mn-Zn-Pb-Se-Cd-S-Te-Bi Mining District. I'll save you the trouble, that's 11 different elements that were, one time or another, recovered from mines in the immediate vicinity of Butte, Montana.



Upper left: 1998 Central Africa postage stamp featuring rhodochrosite

Upper right: My specimen of a rhodochrosite stalactite from Argentina. (4" across)

Lower left: A miniature specimen of rhodochrosite from Butte, Montana in my collection.

Lower Right: Rhodochrosite on 1974 US postage stamp from the Sweet Home Mine in Colorado. (1 3/4" across)

Linn's 2021 United States Stamp Popularity Poll

As we usually do near the beginning of each calendar year, RPA spent part of a club meeting in February making our selections in the annual Linn's U.S. Stamp Popularity Poll. This year there was general agreement that it was slim pickings, at least in the best design and most important categories. Nevertheless, we ended the day qualified to wear "We Voted" stickers.

In the commemorative category the Mid-Atlantic Lighthouses won both best design and most important among the 25 participants which included about 20 in-person voters and another 4 who attended online via Zoom. There was true competition for Least Necessary ("won" by the single Mystery Message stamp) and for Worst Design ("won" by the set of four Message Monsters).

wonder if the USPS gets the *message* about these stamps, pun intended.

On to the definitive issues for 2021: Not much better there, so I start with Worst Design and Least Necessary. There were some really strong candidates here, but Espresso Drinks swept both categories. Apparently we are not coffee drinkers, or perhaps very discriminating ones. A tie-breaker was required for Worst Design, as the Western Wear set was judged equally deserving.

On the plus side we voted the cute little four-stamp set depicting barns as Best Design in the definitive category and the Love stamp conquered all as the Most Important definitive. Perhaps recent world events entered into the voting on that one.

And here they are: Our winners and losers from last year's Linn's Stamp Popularity Poll:

Best Design and Most Important - Commemorative

Best Design - Definitive

Worst Design - Commemorative

Most Important - Definitive

Least Necessary - Commemorative

Worst Design & Least Necessary - Definitive

**George "Tom"
Thomas Fekete**
January 21, 1944 –
February 8, 2022



Long-time RPA member and past APS Vice-President George Fekete passed away last month after a brief, courageous battle with cancer. George was 78 years old. George served as ROPEX chairman in 2004 and made numerous club presentations about his collecting interests over the years. A Celebration of George's Life will be held in late spring; event details will be posted [on this obituary site](#) once finalized.

By Ada Prill

The first of many road trips I took with George Fekete was to the APS show in Providence, RI, in 2000. I soon learned that we had something in common besides stamp collecting: neither of us had a sense of direction. We took a wrong turn around Albany and didn't realize anything was wrong until we saw a sign to Garden State Parkway. Fortunately, before we got lost too many more times, GPS units for cars became available, saving us many hours of trying to figure out where we were.

The road trips became more frequent when we became two of the three members of the APS Board of Vice Presidents and traveled to meetings together. In some ways George was impatient. He HAD to have each new Apple gadget the first day it was on sale, preferably during the first five minutes. If a new film was being released that sounded interesting, he would go out at midnight to catch the first showing.

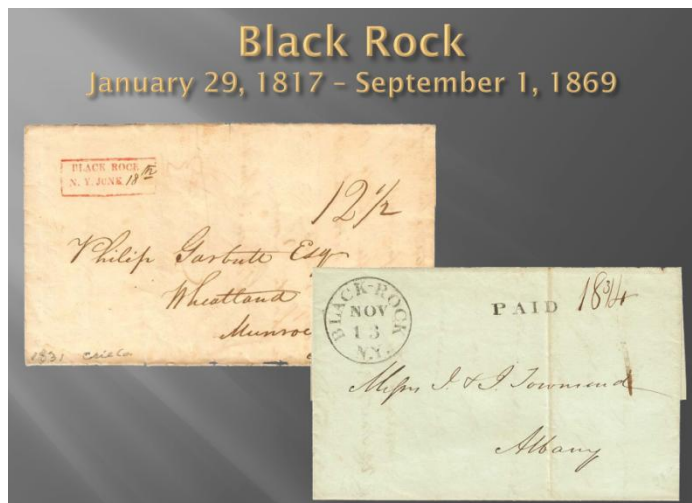
But as a vice president he showed both patience and compassion. One of the jobs of the APS VPs is to settle disputes between members and to expel members who fail to pay their bills or otherwise exhibit dishonesty in philatelic transactions, thereby making APS membership an indication that one can buy or sell philatelic materials to that person without risk of being cheated.

One member was about to be expelled for not returning circuit books and not replying to correspondence. George called for more

investigation. The person in question had been a member for decades and had never before had a complaint against him. George said he didn't want to expel a dead man and have all that person's stamp friends think he was dishonest! He finally found out that the member had had a serious stroke. George found a family member (who didn't know a circuit book from a circuit breaker) and got the missing circuits returned, thereby salvaging both the items in the missing books and the reputation of an honest member. There were a number of times when George devoted a lot of time to making sure we made the right decision rather than the obvious decision. He was also good at mediating compromises when he thought neither party was totally right or wrong.

George collected Washington-Franklins and a number of other stamps, but his great philatelic love was the postal history of the part of Buffalo where he grew up. It was known for some time as Black Rock and later was Buffalo Station B, and he had what may be the most extensive collection of such material in existence. He also collected coins and served several terms on the Board of the Rochester Numismatic Association, including as president of the group.

I will miss George greatly. He was an asset to RPA, RNA, and APS, and he was a wonderful friend to me.



Two of many stampless covers that George had acquired from his home town of Black Rock, New York: George presented a program entitled "My Little Town: Zip Code 14207" at the RPA meeting on January 23, 2014. You can view his presentation on the club webpage:

<http://www.rpastamps.org/presentations/blackrockny.pdf>