

# Hinges & Tongs



## In this Issue:

February – April 2017  
ROPEX 2017 • Pere Marquette Railway  
President's Message • Upcoming Meetings • Cachet Contest  
Cool postmark • Letters  
Christmas on Stamps • RPA Votes for Best US Issues  
Robert Panara • Gotthard Base Tunnel

Copyright, 2017, Rochester Philatelic Association  
Editor: Fred Haynes (fredmhaynes55@gmail.com)

The Rochester Philatelic Association, PO Box 10206 Brighton Station, Rochester, NY 14610 <http://www.rpastamps.org>



It is February. You might say spring is coming. Or you might say we have turned the corner from thinking about ROPEX 2017 and moved into the formal planning stage prior to implementation. Most of our favorite dealers are returning and the venue in Canandaigua is ready for us. We are getting prepared and hope you are also.

As those of you who are active in the club know, there is one major change this year. We are reducing the length of the show to two days. ROPEX 2017 will be Friday and Saturday May 19<sup>th</sup> and 20<sup>th</sup>, with hours from 10 AM until 6 PM each day. Past Sunday attendance has been slow and the majority of the dealers expressed the desire to limit the show to just two days. It seems most collectors manage to attend either Friday or Saturday (or both!) and the third day added to dealer expenses, but not much to revenue. We have listened.

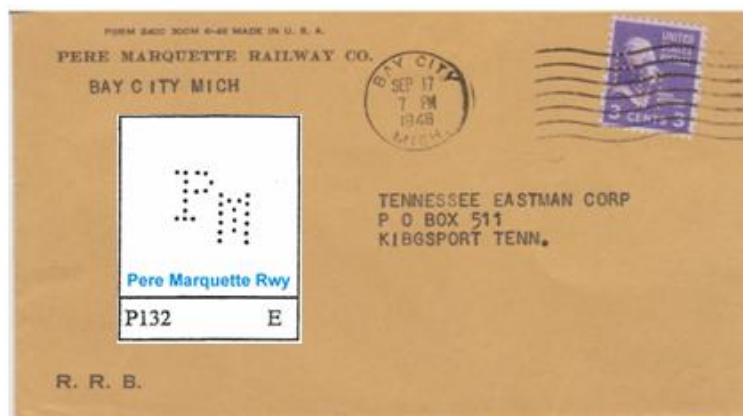
We will return to being an APS "World Series of Philately" event this year with judged exhibits, all seeking the Grand Award for Best in Show and the honor of exhibiting and competing in the "Champion of Champions" event at the annual APS convention. As of early February we have 73 frames signed up to exhibit. We need about 30 more to reach the minimum for APS qualification and can accommodate more than that. If you can help us reach our goal of 100 exhibits, please visit the ROPEX webpage on our website and scroll down to the exhibit section for details.

As in past year's we are sponsoring a "Design-a-Stamp" contest for youngsters. If you know of a potentially interested child or have a local art teacher in your family or your neighborhood, please

take a moment to let them know of this contest. There are financial prizes offered to the winners in three age groups and each will be honored at ROPEX. Further information is available on the ROPEX webpage. Here is a link to the entry form for the [Design-A-Stamp contest](#).

This year is the 200<sup>th</sup> anniversary of the initial digging on the Erie Canal and the ROPEX theme this year will celebrate the bicentennial of the important upstate New York waterway. At Hinges and Tongs press time we are still working on the cachet design and special cancel.

Link: [ROPEX WEBPAGE](#)



This envelope is from the Pere Marquette Railway Co., a company that had its own perfin to safeguard their stamps. If you look closely at the stamp you'll see the initials PM cut into the stamp. The overlay on the left depicts the perfin design and its identification number (PI132) with the Perfins Club registry.

continued on pg. 3 (See Pere Marquette Railway)

## President's Message



Fellow RPA members,

We've turned the corner on another RPA season and are getting closer to our first two day ROPEX. Since ROPEX ends on Saturday this year, we will need help in tearing down and exiting the Convention Center that evening. So if you can, please volunteer to help in that function. John Kellas reports that the unique joint meeting with our sister club, the RNA, will likely be held late in our 2017 season. And, another reminder that RPA officer elections will be held this June. If you think you would like to play a role in the club's leadership next year, please contact me or another officer. We do have openings.

Hope to see many members at ROPEX.

**Rich Spinelli, RPA President**

### Upcoming RPA Meetings

- Thurs. Feb 23** Called Auction  
(Club and Member Items)
- Thurs. March 9** "Cyripedium Orchids"  
by Paul Brach
- Thurs. March 23** "Four Page Exhibit Competition"
- Thurs. April 13** "Summer Olympics on Stamps"  
Theme and members bring items
- Thurs. April 27** "My Stamp Collection"  
by Charlie Adrion
- Thurs. May 11** "The World's Most Unusual Stamp"  
(Tentative)
- Thurs, May 25** "JFK on U.S. Covers"  
by Luis Greiff, Jr.
- Thurs. June 8** "Women on Stamps, Club Election"  
(multiple presenters likely)
- Thurs, June 22** "Annual Strawberry Meeting"
- July 13 and August 10** – Summer Meetings, TBA

Meetings begin at 7 PM at the JCC in Brighton. The first half hour is for silent auction, show/ trade among members, and general member interaction. The night's program begins at 7:30 PM.

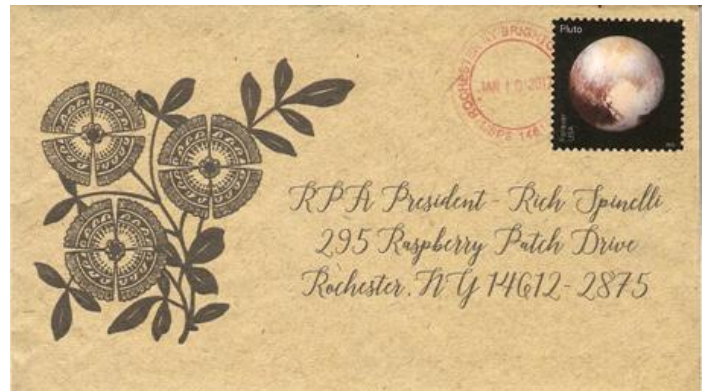
If you have a topic you think the group would enjoy, just let us know. Please plan to talk to us about your favorite philatelic pastime. Let Ray Stone (585-266-2524) know you are interested.

## RPA DESIGN A CACHET CONTEST

There were five cachets entered by three different members. Amy Rau, David Roehrig, and David Farnsworth (3) created interesting cachets, paired them with appropriate stamps, and mailed them to the contest address. Artwork was original and so cleverly done that the "judging committee" (all present for our February 9<sup>th</sup> meeting) decided to call them all winners! Here are three of the entries.



**David Farnsworth** added his own abstract expression similar to Clyfford Still's creation on a 2010 44¢ issue. The "envelope"/postcard is a 3/32" slab of basswood.



**Amy Rau** submitted hers from Pluto via the Brighton substation. And yes, that is original artwork, and naturally, a very nice scripted address from our in house printing specialist.



**Dave Roehrig** chose to honor our troops with an air mail envelope and stamp. In keeping with the theme, the cachet is all original artwork.

## Pere Marquette Railway (cont. from pg. 1)

The **Pere Marquette Railway** ([reporting mark PM](#)) operated over trackage stretching from Buffalo, New York to Chicago, Illinois and from Bay View (Petoskey), Michigan to Toledo, Ohio, with trackage in Michigan, Ohio, Indiana and Ontario. In addition to its strictly rail operations, the PM also operated railway car ferries on the Detroit and St. Clair rivers, and a fleet of car ferries from Ludington across Lake Michigan to Milwaukee, Kewaunee and Manitowoc, Wisconsin. Nearly all of the trackage CSX operates in Michigan today is former PM trackage. The Pere Marquette Railroad was incorporated on November 1, 1899 in anticipation of a merger of three Michigan railroads. It began operations on Jan. 1, 1900.



**PM Berkshire #1225 First Day of Test Runs**

The 2004 film [The Polar Express](#) featured steam locomotive [Pere Marquette 1225](#). The train in the movie (not the same train in the popular children's book) was a model of #1225 based on measurements and recordings of the 1225. It is the locomotive that Chris Van Allsburg said was the inspiration for the children's book, having seen it as a child when it was on the Michigan State University campus.

**Are you unfamiliar with perfin?** The word PERFIN comes from PERforated INSignia. Perfins originated in Great Britain in the 1860's and were authorized for use on U.S. stamps on May 8, 1908. PERFINS are stamps that have been perforated with designs, initials, or numerals by private business and governmental agencies to discourage theft and misuse. Perfins have appeared on postal paper of more than 200 nations. In the United States alone, more than 6,400 patterns are known to have been used. The number of patterns used around the world exceeds 50,000; 40,000 of which are between Great Britain and Germany. For additional information on perfins go to this website: [www.perfins.org](http://www.perfins.org)

Some perfins are difficult to distinguish. Take a look at the perfin for another well known U.S. entity, Popular Mechanics Magazine. Can you tell the difference from the Pere Marquette Co. perfin? Look closely at the base of the P. The Pere Marquette perfin has serifs (extra holes) on each side of the base of the P. The Popular Mechanics perfin does not.



This is the example of the Popular Mechanics perfin (P131) displayed on the Perfins Club website. For clarity the image of the stamp is enlarged in the lower left and the Pattern registration number is provided.



**STAMP INSIDER**  
**Jan. – Feb. 2017**  
Lots of news on New York Club activities and some interesting philatelic feature articles.

[LINK TO STAMP INSIDER WEBPAGE](#)



John Glenn passed away this past December. Fifty-five years ago, on Feb. 20<sup>th</sup>, 1962, the USPS honored his historic three orbits in the Friendship 7 Mercury program spaceship with a same day commemorative stamp issue. Remember this stamp? *see page 6*

## How Cool Is This ?

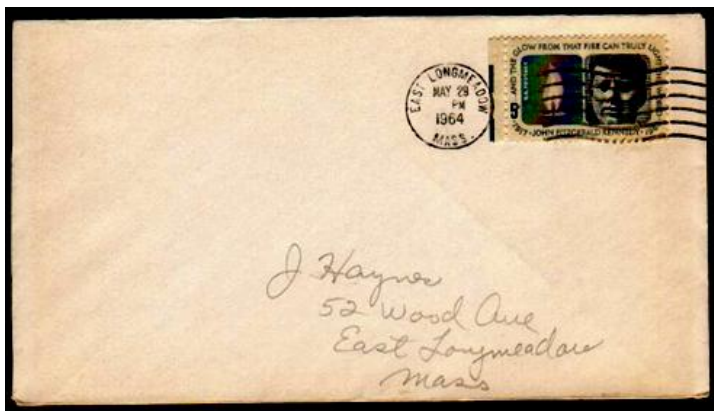


by Fred Haynes

RPA member Nancy Clark likes to stimulate her Facebook friends by placing a theme word or phrase onto her Facebook Timeline each day and having her friends post philatelic responses. Well, one day in late January her theme was simply “my town”.

I decided to seek out postmarks from the many locations I have lived. Naturally, I started with my hometown of East Longmeadow, MA. I opened Google Image Search and simply typed: “East Longmeadow postmark”. I was rewarded with a page of image snippets some of which actually met my intended search criteria. About two rows down in the middle of the screen I saw this excellent and legible postmark atop the five cent 1964 John F. Kennedy stamp. I hit enter.

And that is where the coolness arrived. I had opened a First Day Cover envelope. The owner and poster of the FDC had captioned the envelope simply “uncached fdc with nice wavy line machine cancel”. No big deal, but then I read the address!



[Stampboards.com posting linking to this cover.](#)

It was my childhood home address and the envelope had been self-addressed by my father, John Haynes. On May 29, 1964 my dad had apparently visited the post office and mailed himself a cover on the first day of issue of this JFK Memorial issue. And now some 53 years later that envelope had magically appeared on my computer screen after a simple search for a postmark. In May of 1964, I was 9 years old. Now at 61, I was speechless in my den.

As it turns out, after my dad passed away a bit over a decade ago, my mom (with permission from both her sons) had donated his extensive postmark and cover collection to the [Post Mark Collectors Club](#), headquartered in Bellevue, Ohio, and probably to others. From there, or perhaps after multiple exchanges, this FDC now belongs to a collector of JFK philatelic material and in 2013 he chose to document it with an entry on [Stampboards.com](#). He included a nice paragraph discussion about the town I grew up in and the red sandstone quarries for which it is famous. The post was one of many of his featuring FDC with the same stamp.

I am not a member (yet) of Stampboards.com, so I cannot attempt to reach out to the new owner and give him a little more history on the stamp collector who originated this piece of philatelic history. I guess I could/should do this. Perhaps it will become possible to add to this philatelic story. It has already been a most interesting find for me.



Last issue we acknowledged the passing of life member Bill Arthur. Since then, we have received a card with this message from Bill Arthur’s son.

*Thank you so much for your thoughts and prayers for the passing of my dad. He always thoroughly enjoyed club meetings and activities, and it is clear he made many lasting friendships there.*

**Bill Arthur Jr.**

His card was accompanied by copies of a card from Bill’s services, which bore this image.



*In Loving Memory: William E. Arthur*



In December, Florence Wright returned to the RPA podium to present another program on Christmas, except this time it was about stamps and not Christmas Seals. Florence focused her presentation on telling the “Bible Story” through worldwide philately. She included philatelic issues commemorating the announcement, the journey to Bethlehem, the birth, the shepherds, the wise men, and the Holy Family.



Just three of the nearly 200 stamps Florence Wright used to tell the “story of the Bible”.

Locations from all six continents were featured and the alphabet was covered from Australia to Zambia. It was our final meeting of 2016 and a great way to enter the Holiday Season, even if a bit ironic that our meeting was held at the Jewish Community Center.



The first United States Christmas stamp was issued in 1962. It simply depicted a wreath and two candles and attempted to convey the simple message “Peace on Earth. Good Will to All Men”

### RPA Votes for Best/Worst 2016 Stamps

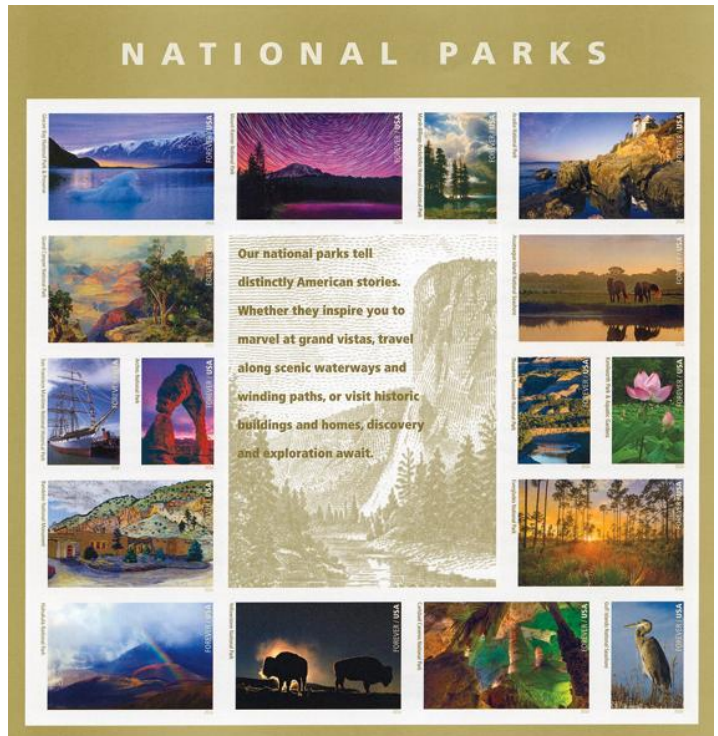
With about 30 members present at our February 9<sup>th</sup> club meeting, we logged onto the Linn’s U.S. Stamp Popularity Poll site and participated. Here is a list of the stamps we selected in the four categories.

### Commemoratives (as voted by RPA members):

- Best Design - National Parks
- Worst Design - World Stamp Show
- Most Important - Service Cross Medals
- Least Necessary - Wonder Women

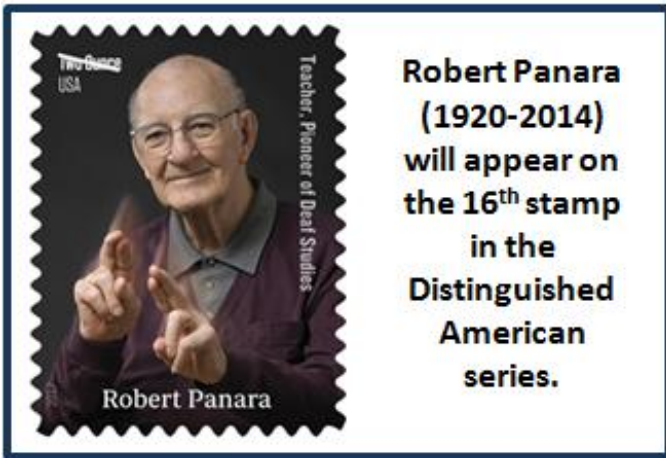
### Definitives (as voted by RPA members):

- Best Design - Moon
- Worst Design - Colorful Celebration
- Most Important - Moon
- Least Necessary - Colorful Celebration



Anyone can participate in the online vote ([link here](#)), but you better hurry. The deadline is March 1.

## NEW ISSUE – ROBERT PANARA



**Robert Panara  
(1920-2014)  
will appear on  
the 16<sup>th</sup> stamp  
in the  
Distinguished  
American  
series.**

There will be another Rochesterian honored with a US stamp in 2017. As of press time we do not know the date of release or the details for a first day ceremony that is expected to be held in Rochester. The following is excerpted from the USPS new issue webpage.

*“Robert Panara (1920-2014) was an influential teacher and a pioneer in the field of Deaf Studies. The stamp features a 2009 photograph of Panara. He is shown signing the word “respect.” During his 40-year teaching career, Panara inspired generations of students with his powerful use of American Sign Language. Panara taught at Gallaudet University in Washington, DC for nearly 20 years and at the National Technical Institute for the Deaf (part of the Rochester Institute of Technology in New York State). Art director Ethel Kessler designed the stamp with an existing photograph by Mark Benjamin, official photographer of the National Technical Institute for the Deaf in Rochester.”*



Two more notable upcoming anniversaries will be commemorated with Forever stamps in the coming month. February 20<sup>th</sup> will mark the 100<sup>th</sup> anniversary of John F. Kennedy’s birthday. The 35<sup>th</sup> and youngest United States President’s term was cut short by his assassination on November 22, 1963, but

in his abbreviated term, Kennedy presided over the Cuban Missile Crisis, the Bay of Pigs, and the passing of the Nuclear Test Ban Theory. His lasting legacy, however, may be the establishment of the Peace Corps.

Nebraska became the 37<sup>th</sup> state on March 1, 1867. The sesquicentennial anniversary of Nebraska statehood will be commemorated with a riverbank picture, prairie grasses, and a flock of sandhill cranes.

## An International New Issue with a Twist



Sometimes new issues commemorate some rather amazing human accomplishments. Do you know where the longest and deepest railway tunnel in the world is located? It took 17 years for the Swiss to move roughly 28 million tons of rock and complete the 57 km long Gotthard Base Tunnel between Ertsfeld and Bodio. In places the tunnel is over 2000m below the Alps that tower above.

To celebrate this feat, the Swiss Post issued two special stamps on June 1, 2016. But these are not just ordinary stamps. About 15 kilos (33 pounds) of the rock removed from the tunnel was ground into dust and applied to the stamp using a unique style of printing and a special varnish. You can own a piece of the Alps if you purchase this issue.



**OK, be honest now.** How many of you noticed the inverted Friendship 7 spacecraft on page 3. I bet the one in your collection looks more like this one.