



Dear Doctor Cards • Perfin Victorian Covers
President's Message • Upcoming Meetings • Cachet Contest
Philatelist's Psalm • RPA Stamp Quiz
World Stamp Show 2016 • Planetary New Issues
A 6 cent bisect • ROPEX 2016 to honor NPS

Copyright, 2016, Rochester Philatelic Association
Editor: Fred Haynes (fredmhaynes55@gmail.com)

The Rochester Philatelic Association, PO Box 10206 Brighton Station, Rochester, NY 14610 <http://www.rpastamps.org>

"Dear Doctor Postcards" by Tom Fortunato



One of the great things about our hobby is that there are so many diverse items to collect. Let me introduce you to something you may not have known about, commonly called "Dear Doctor" cards.

In the days before the Internet, e-mail and spamming, mail was the primary form of cheap advertising. Furthermore, postcards were the rage and drug manufacturers started sending out mailing directly to doctors touting their latest and greatest pharmaceutical products. Mailing from exotic lands proved to be particularly eye-catching for both the picture postcard and the stamp/message. Yes, these postcards were essentially "junk mail", but junk mail bearing true postal history for collectors who seek them.

One of the oldest cards I have encountered was mailed by the New York City drug firm E. Fougera & Company in 1898 to introduce Colchi-Sal capsules as a remedy for gout, rheumatism, and arthritis. The main ingredient in Colchi-Sal was cannabis.

Continued on page 4 (see *Dear Doctor Postcards*)



On November 12th, the club meeting was "Everyone a Dealer". Everyone brought their junk (oops, I mean collectibles) to sell and went home with someone else's. It is a fun evening for all every time we do it.

Two Perfin Victorian covers By Larry Rausch



A few months ago I purchased two Penny Red covers with Perfin stamps from a Canadian collector. It is always interesting for me to research Postal History covers that I acquire. Both of these covers were mailed to Natick, Mass., USA from Liverpool, United Kingdom. They were addressed to Grandmother, Marinda Brown, and her Granddaughter, Winifred Parlin, on the same day, April 24, 1878, and sent in care of Winifred's father and Marinda's son-in-law, William D. Parlin. They were probably mailed to arrive around Winifred's 3rd birthday on May 11.



Continued on page 3 (See *Perfins*)

President's Message



My Phellow Philatelists,

Let me begin by thanking our nine members who contributed over 20 creative cacheted covers to our recently completed Create-a Cachet-Contest. From the depths of the Grand Canyon to the misty clouds above, from a pack mule to Batman to an airmail delivery from Pittsford, our contributors were creative and eagerly participated. For their efforts, they each received a nice philatelic prize. Their work will be displayed at this year's ROPEX show in May.

Speaking of ROPEX, this year's show will give us an opportunity to add features and events which might otherwise not occur at a typical World Series Show. While show chairman Tom Fortunato and team are planning several interesting events, we are always open to new ideas. Pass your ideas to Tom, any other committee member or me.

Finally, thanks to those members that have stepped forward to fill our winter and early spring program slots. As you can see from the list below, we have a diverse and stimulating selection of topics in the months ahead.

See you at the next RPA meeting.

Rich Spinelli
President, Rochester Philatelic Association

Upcoming RPA Meetings

- Thurs. Feb. 11** "World Stamp Show 2016"
by Tom Fortunato
- Thurs. Feb. 25** "Seal-Mail" *by Florence Wright*
- Thurs. March 10** "Mushrooms on Stamps"
by Paul Brach
- Thurs. March 24** "Postal Hand Dies Found in
2015" *by Larry Rausch*
- Thurs. April 14** "Precancels"
by Charles Adrian and Jim Sands
- Thurs. April 28** "Trains on Stamps"
by Florence Wright and Whitney McMahon

Thurs. May 12 "The Life of a Famous Nassau
Street Stamp Dealer" *by Robert DeLena*

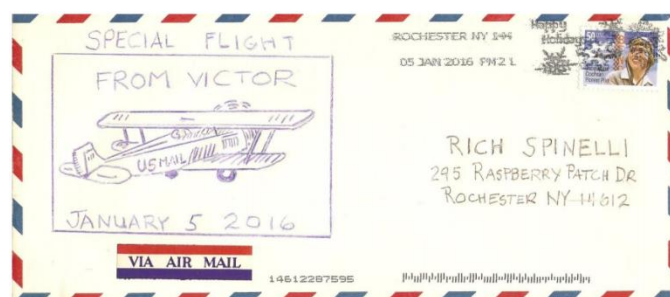
Thurs. May 26 TBA

Meetings begin at 7 PM. The first half hour is for silent auction viewing, show and trade among members, and general member interaction. The night's program begins at 7:30 PM.

We meet at the Jewish Community Center at 1200 Edgewood Ave., just north of the Erie Canal. Visit the [RPA website](#) for an updated and complete list of our programs and to view many of our past programs.

RPA DESIGN A CACHET CONTEST

Nine members participated in the "design-a-cachet" contest, submitting 20 entries by mail. Rich Spinelli scanned the entries and those present at our January 28th meeting voted for winners in three categories. Dave Farnsworth's stamps.com wintry scene with a perfect West Henrietta postmark won for best design communicating the message on the stamp. Dave Roehrig won most creative with an air-mail submission and a hand drawn biplane (see below). "My favorite cover (no specific criteria)" was a tie between a fruit/vegetable drawing by Rich Spinelli and a Christmas theme entry by Luis Greiff Jr. You can see all the entries on the meetings page of our website. Who knows they may all find their way onto a frame at ROPEX in May.



Dave Roehrig's air mail special flight from Victor.

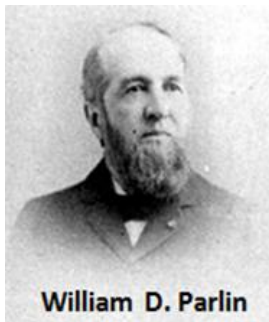
RS Stamp Show in Rochester

Sunday March 20th (9:30 – 4:00 PM)
North Greece Fireman's Field, 3666 Latta Rd. (Rte 18)
Contact: Bob Steeb, 585-621-5019
rsstamp@frontiernet.net

Perfins (cont. from pg. 1)

My research further indicated that William Parlin mustered in "I" company Massachusetts 39th in the Civil War on July 22, 1862 as a Sargent and was promoted to Captain of the United States Colored Troops (USCT) in 1863. He was wounded in two engagements: the Battle of Petersburg and in the Second Battle of Fair Oaks. He received a disability discharge on March 17, 1865.

William married Mary Marinda Brown on Feb. 9, 1865. They settled in Natick Mass. where Winifred was born on May 11, 1875.



In future years, Winifred would marry US Congressman, Charles Aubrey Eaton, on June 26, 1895. Congressman Eaton would participate in the creation of the United Nations. He was also involved with the Massachusetts Hardware Association.



William Parlin opened a business as a manufacturer and seller of hardware, plumbing, windows and other supplies. His business letterhead as found online.

But back to the philatelic covers and those wonderful Perfins. Both covers contain two Penny

Red stamps (Scott #33) and one ½ Penny Stamp (Scott #58) and all stamps contain the same Perfin as shown below. This Perfin was made for the Henderson Brothers and their company Anchor Lines of London and Glasgow. The cover's reverse flap has the company's embossed logo as shown on the right.



This Perfin was made for the Henderson Brothers and their company Anchor Lines of London and Glasgow. The cover's reverse flap has the company's embossed logo as shown on the right. Except for the use of the Perfins, the family connection to Anchor Lines is unknown.

The number (#H 0380.02) beneath the Perfin in the figure just above is the catalog number that has assigned to the Henderson Brothers Perfin by the Perfin Society of Great Britain. For more information on British Perfins, here is a link to the Great Britain Perfin Society home webpage: <http://www.angelfire.com/pr/perfinsoc/index.html>. There is also a Perfins Club focussed on the use of perfins with U.S. stamps (<http://www.perfins.org/>).

Editor's Note: It is certainly tempting to refer to these particluar two 19th century Victorian covers as "The Parlin Perfin Covers!"



A sign of our times. Photo spotted by Ada Marie Prill on a Facebook page. Can you see the USPS mini?

Club Member's Contribution Goes National

In the last issue of Hinges and Tongs we acknowledged club member Charlie Adrion's new book on "Montana Precancels". Since that note, Charlie's fine compilation of the Big Sky State's precancels has been nationally reviewed by the APS Research Library. Here is a link to the review on their blog, entitled "An Exemplary Book by a Modest Author".

<http://blog.stamplibary.org/index.php/2015/12/16/an-exemplary-book-by-a-modest-author/>

Dear Doctor Postcards (cont. from pg. 1)

Undoubtedly the largest distributor of these cards was Illinois based pharmaceutical giant Abbott Labs. In the mid-1950's the company was looking for a gimmicky way to advertise one of its premiere drugs, Pentothal® sodium. The intravenous anesthetic (also known as "truth serum") was invented in 1936 by an Abbott scientist, Ernest Volwiler, who later became president of the multi-national company.

It is not exactly known how many different cards Abbott Labs sent out, or from how many countries, but they have been found in 10 languages and were sent to doctors and hospitals in over 30 countries.

Editor's note: At our first club meeting of 2016, Tom Fortunato introduced Dear Doctor Postcards, their use, their philatelic appeal, and their postal history. He subtitled it "Junk mail from exotic lands". Tom has been collecting these cards for more than two decades. Below are a couple of cards Tom discussed. His full presentation can be found on the meetings page of our website:

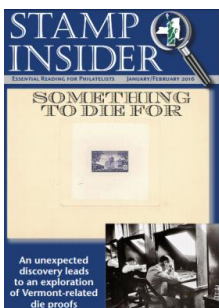
<http://www.rpastamps.org/rpa-meetingschedule.html>



Bayer, the German drug company celebrated its 50th anniversary with a picture postcard of its plant along the Rhine River. They sent this one to a doctor in Paraguay.



Mailed from Fiji to a doctor in Sweden by the Dumex.



STAMP INSIDER Jan-Feb Issue

New York club news
Info on 2016 World Show
Much more

[Link to online pdf](#)

PHILATELIST'S PSALM

*Stamp collecting is my hobby,
I shall not be bored.*

*It maketh me to do research on far places.
It causeth me to correspond with odd people.*

It keepeth me alert.

*It leadeth me into areas of understanding
for curiosity's sake.*

*Though I live through a Winter of inclement weather,
I will fear no boredom, for my stamps are with me.*

*They provideth me a means of escaping
from the tensions of my responsibilities.*

They filleth my house with books.

My cash runneth lower.

*Surely interest and knowledge shall follow me
all the days of my life.*

And I will be listed

in the ranks of the Philatelists forever.

Editor Note: RPA member Gail Ellsworth found this with her dad's stamp collection. One internet location attributes it to an Ema V. Berkley. Several others cite it as anonymous. Regardless of source, it does seem to hold many truths for all of us.

RPA Stamp Quiz: At our December Holiday meeting, we all participated in a 16 question stamp quiz designed to test our knowledge of all thing's philatelic and perhaps some things not so philatelic. If you missed it, here is one question for you to ponder.

The Friendship Bridge opened in 1994 and was commemorated with a Joint Stamp Issue involving 3 countries. What two countries did the bridge connect?

- a. Denmark and Sweden
- b. USA and Canada
- c. Thailand and Laos
- d. Germany and France
- e. Hong Kong and China

BONUS: What is the third country to honor this bridge with a stamp at its opening in 1994?

For the answer, go to page 6. To try your luck at the other 15 questions, go to the Meetings Schedule page of our club website. There are two files there for Thursday Dec. 10th. Open the Quiz file first and see how many you know, then open the Answers file to learn "the rest of the story".

World Stamp Show 2016

Are you considering attending the upcoming World Stamp Show in New York City in late May and early June, but still uncertain of logistics. If you can attend the upcoming February 12th RPA meeting you will be able to join discussions covering the full scope of the show events and logistics. But if that is not possible for you, below is a link to the 30 page slide show that our own Tom Fortunato has prepared for stamps clubs and others to use to disseminate information to potential attendees: <http://www.ny2016.org/images/ny2016ads/allaboutwssny2016.pdf> .

All About...
World Stamp Show-NY 2016
 May 28-June 4, 2016
 Javits Center, 655 West 34th Street
 New York City

www.ny2016.org info@ny2016.org

Facebook Pinterest YouTube

There will be a number of new issues and ceremonies with associated First Day Covers at the World Show. The United States has made its plans known to honor the Solar System during the show by issuing stamps to showcase the 8 planets. The square, black background Forever stamps will be printed in a pane of 16 stamps simply entitled “Views of our Planets”



Pluto may have been demoted to dwarf planet status almost a decade ago, but it will not be overlooked by the USPS. A two stamp

souvenir sheet entitled “Pluto-Explored”, will accompany the release of the pane of primary planets. One stamp will depict Pluto. The second will feature the New Horizons spacecraft that reached Pluto last summer.

Pluto—Explored!

The color enhanced photograph of Pluto is a composite of four images from the Long Range Reconnaissance Imager aboard the New Horizons.

Did you know that by travelling the 3 billion miles from earth to Pluto in 9.5 years, the 1040 pound, piano-sized New Horizons spacecraft had to average over one million miles/day? Think about that for a minute.

Bert was attending the annual stamp bourse with his philatelic friends. It was such a nice spring day that a portion of the dealers had elected to set up outside in front of the pavillion. About an hour into the show, a procession of cars started to pass slowly in front of the exhibits. Bert immediately stood, walked several feet towards the road, and put his hand over his heart until the entire funeral procession had passed the venue.

Upon his return to the dealer table, one of his buddies remarked. “That was sure a nice thing to do”.

As he resumed his search for stamps, Bert replied, “Well, it is the least I could do, I was married to her for 42 years”.

A 6¢ bisect
by David Farnsworth

Sometimes, an item that costs 6¢ can be more fun than one that costs \$600. In 1956, I was a novice stamp collector and noticed that the US Scott #2 10 cent Washington stamp had been bisected and deployed as 5 cents.



I decided to bisect the 6¢ Prexy (Scott #811) and place each half on an envelope. The letter rate was 3¢. The two envelopes were mailed on the same day in two different postal jurisdictions. Both arrived OK with no postage due or delays.



These two covers remain prized pieces of my personal postal history collection.

By the way, the Ellsworth Avenue in the address was named for Colonel Ephriam Ellsworth, who was the first Union officer killed in the Civil War. The RPA talk by John Stoltz on May 8, 2014 was about Colonel Ellsworth.

January RPA Quiz – The Friendship Bridge

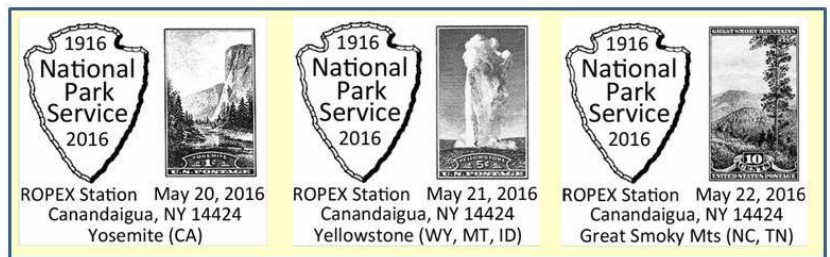


Answer to Question on Page X: The Friendship Bridge connected the Nong Khai Province of **Thailand** with the Vientiane Prefecture in **Laos**. The 1170m long bridge has both car and railway lines and was the first bridge across the lower Mekong River in the region.

On April 8, 1994, Thailand and Laos were joined by **Australia** in issuing stamps dedicating the opening of the bridge connecting the two countries. Traffic in Thailand drives on the left, while in Laos, traffic drives on the right. The bridge follows Thailand traffic rules, with a traffic light exchange on the Laos side controlling the changeover.

ROPEX 2016 to Honor National Park Service

Planning for ROPEX 2016 continues. We can report that we are ahead of schedule signing up dealers and are happy to report that Harry Tong (1840-1950 Mostly Stamps) is doing well and eager to return for his standard super booth. We have decided to honor the 100th year anniversary of the National Park Service with our thematic cachets. The postmarks are shown below for each day of the show. We are graciously accepting donations, or will purchase mint National Park Stamps to be used with our cachet covers.



RPA club meetings are also invited to exhibit this year for free, but we do need to know your intent sometime in the March time frame to properly plan for the exhibits. Contact Tom Fortunato to sign up for frames.