



ROPEX 2015 • Kansas-Nebraska Series  
President's Message • Upcoming Meetings  
ROPEX Exhibits 2016 • World Stamp Show 2016  
RPA Member Demographics • Member News  
ROPEX Covers 2015 • New Issues • New Club Officers

Copyright, 2015, Rochester Philatelic Association  
Editor: Fred Havnes (fredmhavnes55@gmail.com)

The Rochester Philatelic Association, PO Box 10206 Brighton Station, Rochester, NY 14610 <http://www.rpastamps.org>



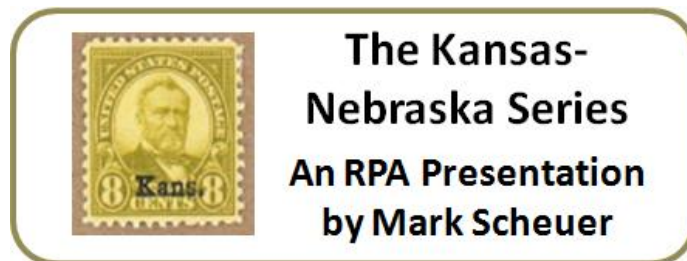
It takes an army to pull off a successful event like ROPEX and an army is what the Rochester Philatelic Association had for the May show in Canandaigua. It is hard enough to make an annual event work well when held in a recurring location. It is amazing that everything went so smoothly in a site that was so new and different for us. That is a testament to the strength, generosity, and diversity of skills of all the club members who worked so hard to make it happen. From setting up almost 200 exhibit frames on Thursday and assisting our dealers with new venue questions, through the three day show, and finally to returning everything into storage on Monday, we are happy to report that year one in Canandaigua was a great success.



A portion of the ROPEX 2015 show floor.



The exhibits of ROPEX 2015: 194 total frames!



## The Kansas-Nebraska Series An RPA Presentation by Mark Scheuer

At our first June meeting, Mark Scheuer informed us on the history and collecting status of the Kansas-Nebraska overprint series of May 1, 1929 (Scott #658-679). Given the high rate of mail robberies, from mail trains in the Midwest and from post offices themselves, the USPS authorized a special issue to detect out of state sales. The trial introduction of the Kansas-Nebraska overprint series was to make it more difficult for thieves to dispose of stolen stamps across state borders.



The complete Kansas-Nebraska series of overprints.

Mark decided to focus his own collecting interest in the series to covers bearing the overprinted stamps. He set the following rules for himself: 1) mailed from within state, 2) paying proper postage, 3) non-philatelic (i.e. real mail!), 4) <\$10 per cover, and 5) NO FAKES. Of course, Mark noted he

*continued on page 4 (see Kansas-Nebraska)*

## President's Message



My fellow RPA Members,

Welcome fellow RPA members to the initiation of our 103rd consecutive year of philatelic meetings, events, exhibits and socialization. You newly elected Board is pledged to make your RPA experience as informative and entertaining as possible, solicit your input as to the direction and betterment of the club and engage you in the myriad activities of the club. We will enhance the things that work, remove the things that don't and look for new activities to further engage you. We will continue to focus on the growth of club membership as in the past two years and to initiate activities to develop and understand our long term strategic direction. We will continue to look to you for the majority of our meeting subject presentations, since you are each experts in one or more subjects. So, don't hesitate to volunteer, or respond positively, when asked to present at a meeting this year.

I am excited to begin the new season and look forward to seeing you at our first meeting on September 10.

**Your President, Rich Spinelli**

### Upcoming RPA Meetings

**Thurs., Sept. 10:** "What I did this summer" and member survey to help plan the year's activity

**Thurs, Sept. 24:** "A Look at Canada", by Bill Arthur

**Thurs. Oct. 8:** "A Trip to Washington 2006"  
by John Babbitt (*an offsite dinner meeting, see box to upper right for details*)

**Thurs. Oct. 22:** "Obscure, Confusing, Bizarre, and Defunct Countries Around the World: Their Stamps and Coins", by Steve Eisinger

**Thurs. Nov. 12** Everyone a Dealer Night

**Thurs. Dec. 10** Stamp Quiz and Christmas Party

Meetings begin at 7 PM. The first half hour is for silent auction viewing, show and trade among

members, and general member interaction. The night's program begins at 7:30 PM.

We will meet this year at the Jewish Community Center at 1200 Edgewood Ave., just north of the Erie Canal. Visit the [RPA website](#) for an updated and complete list of our programs and to view many of our past programs.

### October 8<sup>th</sup> Dinner Meeting

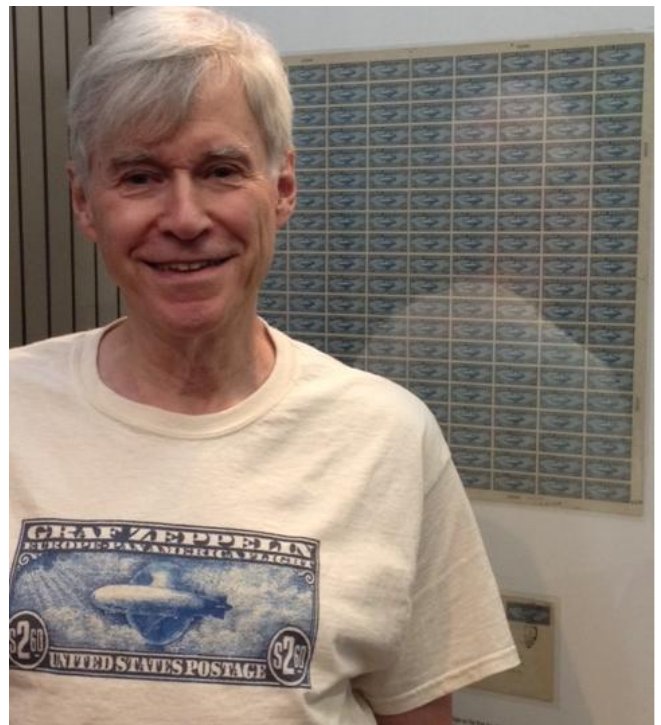
Location: Morningstar Restaurant, 850 Merchants Rd

Cost: \$20 (RSVP & pay Ray Stone, 585-266-2524)

-- or come for talk only at no charge

Dinner at 6:30 PM, talk shortly after 7:30 PM

Chicken french, Pork Chops, or vegetarian options



**Dave Farnsworth will be ready to report on his summer activity at our first meeting.** Here he advertises the C-15 Zeppelin stamp in front of a full imperforate sheet at the National Postal Museum. Dave writes: "We saw the 1856 1 cent British Guiana stamp. It was well guarded by an affable guy. The stamp was almost impossible to see. It appeared to be all black. A high point for the non-philatelists was a pile of stamps from which each person could select up to six for free courtesy of the Mystic Stamp Company and a machine that you could use to take a photo like in a photo booth and place it on a personal "postage stamp" to be e-mailed." Dave added that the shirt was acquired from the online site, <http://www.goingpostalt-shirts.com/>.

## ROPEX Exhibits for 2016

ROPEX is taking a break from national World Series of Philately competition in 2016 due to World Stamp Show-NY 2016, so we're doing something new and want to include every RPA member!

We have held popular meetings in the past two years focusing on exhibiting and we want to build on that. Not everyone can easily put together a multi-frame exhibit, but a one frame (16 page) exhibit is possible to assemble by next May. You are invited to put one together on the philatelic subject, "What I Collect."

There are no rules on what you present or how you put it together, but it must fit on a 4x4 grid made up of 8.5x11 inch tall paper sheets, fit into an exhibit frame, and contain mostly philatelic items! OK, so there are a few rules!

The more ambitious among you may also reserve up to 10 exhibit frames for additional exhibits. You can fill the space with one or more separate exhibits to a maximum of 10 frames--while the supply of frames is available--on a first come basis.

Only RPA members will be invited to exhibit during ROPEX 2016. Mail-in exhibits cannot be accepted, but agents will be allowed to bring and then take away exhibits of others. Members of the public will vote on their favorite one frame "What I Collect" exhibit as well as favorite multi-frame exhibit. Winners will receive an award to be decided on.

Reserve your frame(s) by filling out one online exhibit entry form for every exhibit entered (<http://fs3.formsite.com/stamptmf/form579357407/index.html>), or ask for a paper to fill out at an RPA meeting. Direct any questions to Tom Fortunato ([stamptmf@frontiernet.net](mailto:stamptmf@frontiernet.net)).



RPA member Florence Wright in front of her ROPEX 2015 3-frame exhibit "All Aboard America"

## World Stamp Show – NYC, 2016

By Tom Fortunato

Have you started to make plans to attend the really big stamp show in New York City from Saturday, May 28-Saturday, June 4 next year? These once-a-decade philatelic exhibitions occur, yes, only every 10 years in the US and are not to be missed. A group of RPA members have expressed interest in attending together, and so has a group from the Buffalo Stamp Club. So here are some details and costs to consider.

You have several options getting to and from New York City. Driving or car-pooling is always an option. Trailways offers many daily buses about every 2-3 hours from Rochester to NYC and back, with current prices at \$90 round trip. Amtrak train service ranges from \$124 for a non-refundable round trip ticket to \$238 for a fully refundable one. MegaBus runs one or two daily buses with prices starting at \$20 to about \$50 round trip. These all require 6-8 hours of travel time. Plane fare will range from \$175 to about \$250 round trip at their cheapest.

The listing of discounted hotel rooms available through World Stamp Show-NY 2016 has just been announced. Over 20 different properties are listed with nightly rates starting at \$99 plus tax, or around \$120 inclusive of tax. The lesser expensive hotels are around Newark's Liberty Airport, about 15 miles southwest of the show's location, the Javits Convention Center.

Transportation from Liberty Airport to the show costs around \$12.50 by train each way (about a 30 minute trip) and by bus for \$5.50 each way (about a 45 minute trip). Slight senior rates are available for those over age 62.

Direct any questions to Tom Fortunato ([stamptmf@frontiernet.net](mailto:stamptmf@frontiernet.net)). See show information at <http://www.ny2016.org>.

### **RS Stamp Show in Rochester**

Sunday September 27 (9:30 – 4:00 PM)

North Greece Fireman's Field, 3666 Latta Rd. (Rte 18)

Contact: Bob Steeb, 585-621-5019

[rsstamp@frontiernet.net](mailto:rsstamp@frontiernet.net)

## Kansas-Nebraska (cont. from page 1)

broke most of these rules. But with these rules he can collect one cent postcards, one and a half cent 3<sup>rd</sup> class greeting covers, two cent regular mail 1929-1932, three cent regular mail after July 6, 1932, five cent air mail, and, of course special delivery and registered mail envelopes which deploy the higher denomination values.



Two cent regular mail envelopes with interesting corner advertising from Mark's collection.

For a look at other covers from Mark's collection and some he'd like to have except for that \$10 rule, visit his presentation on the club website:

(<http://www.rpastamps.org/presentations/kansasnebraskaoverprints.pdf>) If you have a cover that meets Mark's rules, he would love to hear from you.



Although Mark hasn't any in his collection there are **FDC**. Three of the stamps were first issued on April 15<sup>th</sup> in Newton, Kansas, two weeks before the stamp was fully released. These envelopes are from various Regency Superior sales.

The post office plan was to extend the program to all 48 states, but the program was not considered successful as it introduced a whole new set of logistical issue including forgeries. The scheme was deemed unfeasible and was dropped when the initial

run of overprinted stamps was exhausted. Just imagine the collecting opportunity that was lost!



Mark claims this registered air mail cover to be the "gem of his collection" (5 ¢ air mail, 15 ¢ registration accomplished by two 10 cent Monroe Kansas overprints)



Three of the 2015 Design-A-Stamp winners receive their awards at ROPEX. Behind the winners are Frank Tritto, who donated the monetary awards, and Mary Iman who stewarded the program and the Youth Table at the show. Two of the Award winning stamps are shown below. Visit the [ROPEX 2015 webpage](#) to see them all.



Raegan Palmatier- 1st Place  
Grade 3-5 Age 10, Grade 4  
East Rochester Elementary  
(East Rochester)

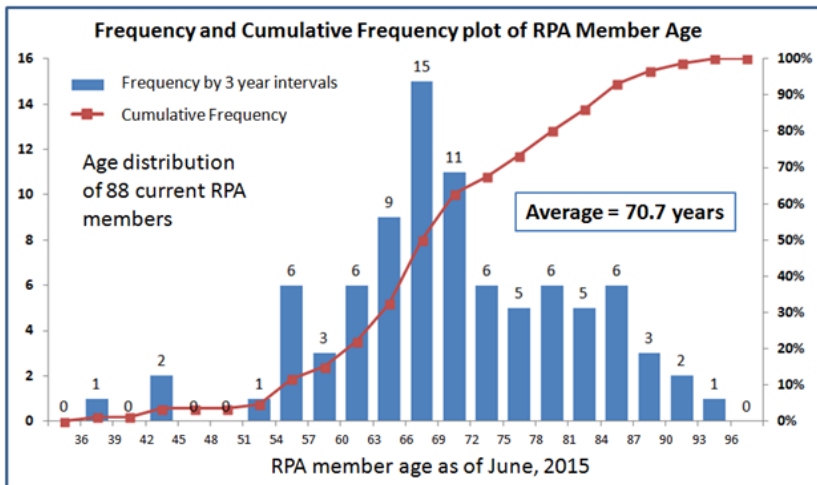


Teagan Engle- 1st Place  
Grade 9-12  
Bartley  
(New Bloomfield, MO)

# RPA Member Demographics

By Fred Haynes

You may have wondered why the RPA was soliciting birthday information last spring from its members. No, the data has not been turned over to the NSA, the IRS, or even the APS, and your birthdays have not been, and will not be, posted on Facebook! Rather, we thought it might be interesting to evaluate the demographics of stamp collectors. Granted, we are a small club, and a regional one to boot, but there seems no reason to think that our little enclave of philatelic enthusiasts should be radically different from the overall population of collectors, or at least collectors who opt to join clubs. So what did we learn?



The average age of the 88 members for which we obtained data (which was virtually everyone), was 70.7 years as of June, 2015. A whopping 28 members, or almost one third of us, are over 75 years of age. When portrayed in frequency format using 3 year increments, the modal population is 66-69 years old. Our youngest member is 37 and she (note that pronoun, but that is a different demographic issue) just joined us this year. We have/had only 3 members less than 51 years of age. One just moved to South Carolina. Ouch!

So those are facts, but what might this tell us, if anything? Well, at first glance one might surmise that we are simply an aging group, destined to a slow but steady decline as the years and decades pass. But one could argue that it might be more complicated than that. Perhaps the fact that almost 40% of our members are between the ages of 63-72 just reflects the fact that folks turn to philately at/or near retirement. Or that stamp collectors who are younger haven't the time, or motivation, to join clubs such as ours until they retire. Either way, it might be this demographic group (retirees or those approaching such) that the hobby, and clubs like ours, should target rather than thinking it can make significant inroads on attracting the 30 or 40 somethings who are busy working and raising families.

Of course, these are just my thoughts from an interesting data set. We welcome your thoughts at our first meeting.

# More RPA Member News



**A ROPEX reunion!:** RPA lifetime club member Frank Tritto (right) had not seen his friend Bob Cummings, who lives in Houghton, NY, in over 25 years. Frank and Bob were side by side when they stormed the beaches in Normandy on June 6, 1944. Both were together throughout the months after and then in Berlin helping to manage the surrender. Bob was with Frank in Berlin when Frank met the women who would be his wife for over 50 years. Saturday at ROPEX, friends of both men arranged a reunion of two truly great men.



**Club Vice President Ray Stone (seated) presents John Lighthouse** with The United States Stamp Society "Statue of Freedom Award". John actually won the award at ROPEX 2014 for a multi-frame exhibit entitled "U.S. Revenue Stamps- First Issue: Using the Documents of Commerce to Fund the Civil War". However the award was not presented until it was discovered this year in the club's show materials. John upgraded the exhibit and won more awards this year. (see [ROPEX Palmars](#) on the webpage)

## ROPEX 2015 Covers

Each of us attends ROPEX with the hopes of acquiring new material for our diverse collections. It is hard to imagine how the dealers manage to bring something for everyone. But year in and year out they do. Here, club member Larry Rausch reports how the 2015 ROPEX search went for him. Perhaps we will see some of these covers in a philatelic exhibit entitled "What I collect" at ROPEX 2016? (see page 3)

**By Larry Rausch:** Our 2015 ROPEX Stamp Show has come and gone and a very good show at a new location in Canandaigua. I added a number of covers to my postal history collection. Here are a few with nice fancy postmarks.



The first is a nice Civil War Patriotic cover with a Rochester, NY 1862 Postmark.



And another Rochester, NY cover with an R Postmark.



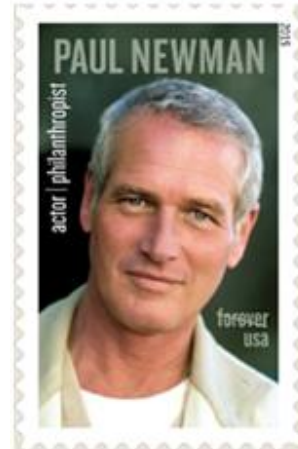
a very nice fancy dual **negative 5** Boston, Ma postmark



And lastly, but certainly not leastly: a difficult to find Caledonia, NY **Star** postmark.

## New Issues

Elvis Presley and Ingrid Bergman were honored on U.S. Forever stamps on August 12<sup>th</sup> and 20<sup>th</sup> respectively, but that is old news. September 18<sup>th</sup> it will be time for Paul Newman to get his Forever stamp.



**Paul Newman (1925-2008)**  
**Actor extraordinaire** (ten Academy Award nominations and an Oscar in "The Color of Money")  
**Auto Racing:** successful racer and Indy car owner  
**Newman's Own-** food company founded in 1982 which donates all profits to charity (\$430 million and counting)

## RPA New Officers Elected in June, 2015

### RPA Officers (July 2015-June 2017)

President- Rich Spinelli

Vice President- Ray Stone

Treasurer- Dave Robinson

Recording Secretary- Fred Haynes

### Board of Governors

Rick Kase (to June 30, 2016)

Bob Kingston (to June 30, 2017)

Chuck Schultz (to June 30, 2018)

Tom Fortunato (immediate Past President)