

Hinges & Tongs

In this Issue ...

December 2011 - February 2012



Final Call for Dues • ROPEX-NTSS 2013 Buttons Available

A "Rochester" Christmas Story • Walter Orton III

RPA Exhibit Winners • WANTED: Early Rochester Postal History

The "Other" Rochester, NY • What's the Difference?

2012 Meeting Schedule • Upcoming Area Shows December-February

New US Stamps • Next RPA Meetings

2012 RPA Banquet Details • Time to Pay Your Dues

Copyright 2011, Rochester Philatelic Association, Inc

The Rochester Philatelic Association, PO Box 10206 Brighton Station, Rochester, NY 14610 <http://www.rpastamps.org>

Final Call for Dues

Here's our last reminder to pay your 2011-12 dues. Membership is \$20. Make your check payable to "RPA" and bring it to an RPA meeting or send it to our PO address above.

ROPEX- NTSS 2013 Buttons Available



Have you picked up your button yet? The club purchased buttons advertising our big 100th anniversary show set for May of 2013. Three different designs are available promoting not only our participation but that of the American Topical Association as well!

Each RPA member is welcome to their choice of one of them that we hope you will wear to stamp shows here and elsewhere. Pick up yours at any RPA meeting while supplies last.

A "Rochester" Christmas Story



Do you know this 1995 Christmas stamp's connection with Rochester? "Santa Clause Working on a Sled" was part of a 4 stamp set designed

by John Grossman and Laura Alders and available in sheet, booklet and coil formats.

A little bit of researched uncovered that this particular image was based on a 1915 postcard published by the Stecher Lithographic Company from Rochester.

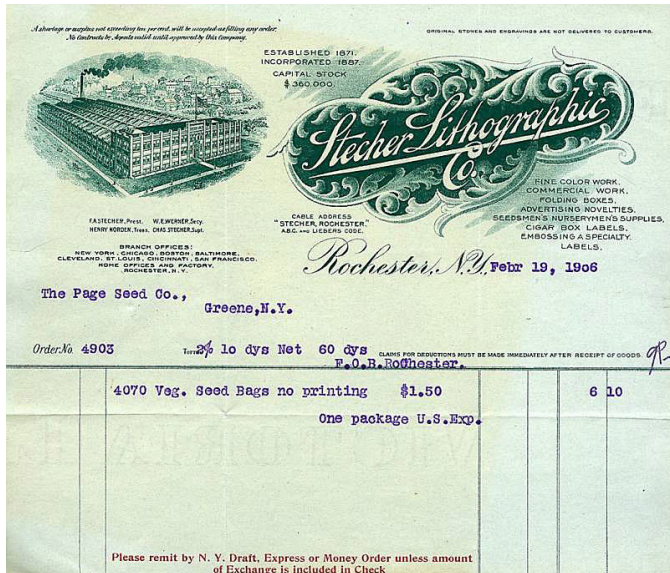
The Charles F. Muntz & Company began in the city in 1871 as a chromolithography printer with three owners, Muntz, Anton Rahn and Frank A. Stecher, a German immigrant from Achen, Baden Germany. Owners changed hands several times over the next decade and the firm was renamed Mensing & Stecher in 1882 at the same time they opened a new three floor plant on 118 North St. Paul Street, seen here.



Stecher bought out Mensing in 1886 and renamed the firm the Stecher Lithographic Company. Another move was necessary in 1900 to a 300,000 square foot plant at 274 North Goodman Street. That building is now known as the Village Gate mini-mall.



An image of the plant proudly appeared on this 1906 company invoice.



Rochester's nursery business was booming in the second half of the nineteenth century and so, too, did the printing trade producing various botanical fruit, flower and nurserymen's plates used by salesmen to sell their plants. In fact, by 1890 Rochester became the country's hub for the business, with D. M. Dewey and Stecher being the two largest of six firms here.

Per a city industry guide of 1888 Stecher had 100 employees and \$125,000 in equipment, specializing in advertising graphics and trade cards. It is not surprising that they would have branched out into picture postcard production during the craze at the turn of the century, including the design shown in the 1995 stamp.



Offered on eBay for \$3.50 for the pair.

The company was very successful over the years. The aforementioned 1906 invoice references branch offices in New York, Chicago, Boston, Baltimore, Cleveland, St. Louis, Cincinnati and San Francisco with assets of over \$360,000 in capital stock. The firm grew to become Stecher-Traung with the world's largest lithographic printing plant, manufacturing cartons and labels of all sorts for a variety of products.

While the Rochester plant closed in 1980, the company continues today as Stecher-Traung-Schmidt headquartered in Detroit.

Walter Orton III



Sad news to report that RPA Life Member Walter Orton passed on Sunday, October 23.

He had received a flu shot a week earlier and had a bad paralyzing reaction to the serum called Guillain Barre syndrome. He was shortly thereafter admitted to the hospital and was beginning to show minor signs of improvement over the course of the week, but tragically the syndrome affected his respiratory functions and he passed with his family at his side at the age of 84.

Walter was an avid exhibitor at ROPEX as well as regionally and elsewhere nationally. He was an accredited judge for the Federation of New York Philatelic Societies, the earlier Niagara Frontier Federation and nationally for the American Philatelic Society. He won numerous gold medals for his U.S. 1869 Issue

exhibit and then later for his Battleship Revenues exhibit, containing the only known full set of large proofs in private hands.

Active in the Buffalo Stamp Club for many years, he won its highest honor they have, the Fred Keoph Award for "Outstanding Member."

RPA Exhibit Winners

Congratulations to the following RPA Members for receiving awards at STEPEX 2011, October 21-22 in Big Flats, NY. Judges were RPA members Bob Meegan and Tom Fortunato:

Gold

Alan Parsons- Corning, NY Postal history Including DPOs now Serviced by the Corning Post Office

Alan Parsons- The Sullivan Commemorative of 1929

Alan Parsons- 19th Century Railroad Postal Markings Related to Steuben, Schuyler, Chemung and Tioga Counties, NY

Silver

David T. Robinson- US Non-Denominated 'A' Eagle Rate Change Stamp

Eleanor A. Steeb- Everybody Must Get Stones (But Not Bob Dylan's Version)

Raymond M. Stone- 5 Cent Circus Wagon, Syracuse's Transportation Coil

Raymond M. Stone- 10 Cent Canal Boat, Buffalo's Transportation Coil

Raymond M. Stone- Pitcairn islands

Alan also won the Reserve Grand and the Empire State Postal History Society Award for his Corning, NY exhibit and the American First Day Cover Society Award for his exhibit on The Sullivan Commemorative.

The Grand went to Harlan F. Stone of Woodside, NY for Switzerland's Domestic Postage Due Charges 1862-1918.

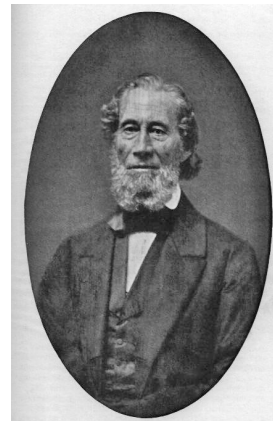
WANTED: Early Rochester Postal History

The RPA wants to showcase a frame of

Hinges & Tongs

philatelic gems from Rochester's postal past for potential display during our 2013 stamp show. They needn't be rare, but of unique importance. Only 15- 8 ½ x 11 inch pages will be allocated for this special composite frame of postal history gems. Items will be selected from those submitted by the ROPEX Committee, with contributors recognized if desired. Of course, entire exhibits of Rochester postal history are also very much welcomed!

Colonel Nathaniel Rochester bought a 100 acre tract of land in upstate New York and began developing it in 1811, utilizing the power of the Genesee River as a site for flour mills. In early 1812 the population was 15 but growing rapidly due to the milling trade. Official documents record the first Rochesterville post office opening on November 19, 1812 to serve the area.



Abelard Reynolds (seen at the left) was appointed postmaster and ran the office from his house. A weekly mail route was established to Canandaigua with a woman, Mrs. Dunham, as the regular post rider carrying an average four letters

per run. The region flourished and by the time the Erie Canal aqueduct was completed over the Genesee in 1823 the population had grown to 2,500. That is when the city was officially renamed "Rochester."

As reported by noted Rochester postal historian Douglas Penwell (<http://www.rochesterhistoryalive.com/Postmarks.htm>), the earliest known surviving letter mailed from Rochester bears the handwritten manuscript marking "Rochester Village." Its last known where-about was in an unnamed institution's archives. The oldest letter in public hands is dated September 16, 1814 with a "Rochester, NY" manuscript marking, but its location is currently unknown.

ROCHESTER

July, 11

Per the American Stampless Cover Catalog, the earliest recorded markings used in Rochester were simple straight line ones showing "Rochester" (1815) and "ROCHESTER" (1816-18) with the month and last two digits of the year below. Both of these types are scarce to rare and can be significant in value as well as historical importance. Round and oval postmarks in a variety of types, sizes and ink colors were used between 1816 and 1855. But what are the current earliest known dates of all of these markings?

The RPA would like to catalog items from this era for use by current and future postal historians.

The "Other" Rochester, NY

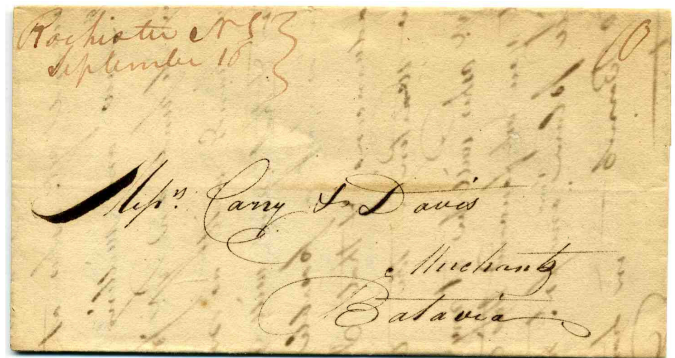


The article before this has a brief history our city. But you might not know about another Rochester, NY in another part of the state.

Ulster County is one of the state's oldest, formed in 1683, including the current cities of Kingston and New Paltz on the west side of the Hudson River. The area was originally settled by the Dutch in 1614, then abandoned due to constant Esopus Indian attacks, and later colonized by French Huguenots. By 1664 the region was taken over by the British, headed by James II, the Duke of York. It was then renamed "New York."

The Town of Rochester incorporated in January, 1703, named for the Earl of Rochester at the time and was formerly known as Mumbaccus. It was roughly southwest of the center of Ulster County along Rondout Creek covering approximately 48,000 acres. Population at the time was 334. Like our own city, this agricultural area was best known for the thriving small mills lining area streams.

Quoting the Town of Rochester's web site (<http://www.townofrochester.net/>): "In fact, Rochester lost its post office name designation, which was officially changed to Accord on July 13, 1826. Although not documented, it is assumed that when the fast growing City of Rochester, on the Eire Canal changed its name in 1822 from Rochesterville, it began a campaign for the eastern New York Township's name and won four years later."



Postal items from Ulster County's short-lived "Rochester" are quite rare. Only one cover from 1824 is known and that item was originally thought to have originated from our area!

Yes, the Town of Rochester survives to this day. Farming continues to be its mainstay. Has anyone in the club been there?

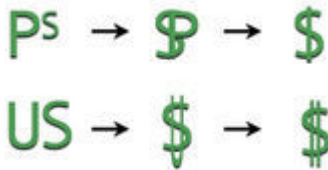
What's the Difference?

Take a good look at these two stamps and other than the image, what's the difference?



Well, it takes a keen eye to spot that the first one has two strokes in the dollar sign, the second has only one. I was always taught to put two strokes between the S in school, but now the vast majority of computer fonts use only 1.

An article in the October 24 issue of Linn's Stamp News in Henry Gitner's "Stamp Market Tips" column raised this point, noting that the \$1 red fox stamp (Scott 3036 and 3036a) with a "double stroke" dollar sign was in high demand for a non-philatelic use on legal documents as it "gives the stamps an assured value." Gitner confessed he didn't quite understand why.



Well, a little bit of research uncovered the following.

There are several legends about how the dollar sign came about. Some think the symbol was the variant of that used by the peso in Spanish America in the 17th century. That coin was used throughout the American colonies as well. Equally plausible is that the symbol is a combination of the letters U and S, which when superimposed over one another and a small part of the lower part of U erased looks like the dollar sign.

But the reason why the dollar sign with double bars intregues some people probably stems back to the 1930's and the end of the gold standard. The change from the double stroke to single stroke seems to have happened around 1935 when Federal Reserve notes

("soft" currency) replaced silver and gold certificates ("hard" currency). That's what was referenced in Gitner's article as "assured value"--backed by actual gold and silver.

So for whatever reason some people still believe that a double barred dollar sign equates to a backing by real gold or silver! Try taking that to the bank! We stamp collectors know the truth that only font "license" dictates which symbol is used today

2012 Meeting Schedule

- Thurs., Jan 12.... "Ireland" by Don Grover
- Thurs., Jan 26.... TBA
- Thurs., Feb 9..... Linn's "Pick Your Favorite 2011 Stamps" Night
- Thurs., Feb 23....TBA
- Thurs., Mar 8..... RPA Banquet (off-site)
- Thurs., Mar 22... Stamp Bingo
- Thurs., Apr 12.... ROPEX Prep Night
- Thurs., Apr 26.... Kiloware Night
- Thurs., May 10... Egypt and its Stamps
Travelogue by Don Osborne
- Thurs., May 24.. Scott #33, Plating GB's 1
Penny Red by Larry Rausch
- Thurs., Jun 14... Annual Business Meeting
- Thurs., Jun 28... Season End Strawberries

Upcoming Area Shows December-February

Jan 21 **St. Catharines** 63rd CATHEX Show
Sponsored by the St. Catharines Stamp Club.
Grantham Lion's Club, 732 Niagara St. Hours:
10-5. 12-14 Dealers, club circuits, lunch
counter. Bourse.
Email: stuart.keeley@sympatico.ca
Website: <http://www.stcatharinesstampclub.ca/>

Feb 18 **Niagara Falls, ON** NIPEX 2012
Sponsored by the Niagara Philatelic Society.
Stamford Lion's Club, 3846 Portage Road.
Hours: 10-4.
Contact:

A complete listing of shows can be found at:
<http://www.rpastamps.org/rpa-stampshowcalendar.html>

New US Stamps



Forever (44 ¢) Stamps Unless Noted Otherwise

- January 6 **New Mexico Statehood**
- January 23 **Year of the Dragon**
- January ? **Weather Vanes**
- January ? **Aloha Shirts (postcard rate)**
- January ? **Scenic America Glacier National Park (airmail)**

- January ? **Scenic America Lancaster County, PA (airmail)**
- January ? **Year of the Dragon**
- January ? **Love Ribbons**
- February ? **John H. Johnson (Black History Month)**
- February ? **Heart Health**
- February 14 **Arizona Statehood**

Next RPA Meetings

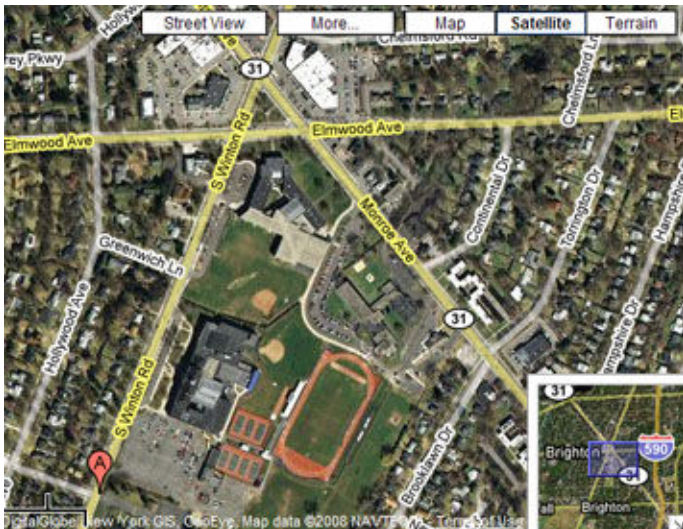
Thur., Dec 8..... Live Auction (bring up to 5 lots per member) and Holiday Bring-A-Gift/Get-A-Gift \$5 Exchange

2012

- Thurs., Jan 12....."Ireland" by Don Grover
- Thurs., Jan 26..... TBA
- Thurs., Feb 9.....Linn's "Pick Your Favorite 2011 Stamps" Night
- Thurs., Feb 23..... TBA
- Thursday, Mar 8...RPA Banquet (off-site)

The Rochester Philatelic Association
PO Box 10206 Brighton Station
Rochester, NY 14610-0206

RPA Meetings are at Twelve Corners Presbyterian Church
 1200 Winton Rd South, just south of Brighton High School



2012 RPA Banquet Details

The annual RPA banquet will be at 6 PM, Thursday, March 8 at Cerame's Italian Villa, 3450 Winton Rd. Call Ray Stone at 585-266-2524 for pricing details and reservations.

Time to Pay Your 2011-12 Dues!

Unless you're a life member, or have already done so, your dues are due! Check the mailing label. Forward your \$20 check made payable to "Rochester Philatelic Association" to our PO box above, or bring it to the next RPA meeting.

We can always use articles for upcoming Hinges & Tongs issues.
 Email Tom at stampmf@frontiernet.net