



Welcome • Officers Elected • Life Members • ROPEX Photos Banquet • Constitution Committee • SCM Cancel/Event • RPA Forum Meet-A-Member • Board Notes • Worldwide New Issues US Stamp Program • Constitution Amendments • Area Stamp Shows Next Meetings • Dues Due • H&T Goes Digital • On the Web Contact Us • Special Insert- Our Contact Records Need Updating Ada Prill's "First Day Cover Vocabulary"

The Rochester Philatelic Association, PO Box 10206 Brighton Station, Rochester, NY 14610 <http://www.rpastamps.org>

### Welcome to the "New" Hinges & Tongs!

With the new philatelic season comes a new RPA administration and a new look to H&T! We hope you'll enjoy this and every issue! Above all, this is your publication! The editor welcomes your submissions of articles and photos as well as comments and suggestions. Our newsletter is a continual "work in progress" issued bi-monthly five times a year.

What's new?

- A two-column format using larger font type (we're not getting any younger...)
- "Meet-a-Member," "RPA Forum" and "Unique Worldwide New Issues" features.

### Officers Elected for 2008-2009

Results from the election held in June:

- President - Ray Stone
- Vice President - Frank Tritto
- Recording Secretary - Rick Kase
- Corresponding Secretary - Tom Fortunato
- Treasurer - Dave Robinson
- Board of Governors, office from July 2008 to:  
June 2009 - Chuck Schultz  
June 2010 - Joe Doles  
June 2011 - Bob Kingston

### RPA's Newest Life Members

The RPA congratulates Chuck Schultz, his daughter, Tracy Russo, and John Cali, all of whom have reached RPA Life Member status with 25 years of continuous membership. They will be honored at the upcoming RPA banquet.

### ROPEX Photos

Thanks to George Hill, our unofficial ROPEX photographer, who took well over 100 shots. Here are just a few...



It takes plenty of hands to set up the 200 exhibit frames, 150 tables and 300 chairs we need at ROPEX. Thanks one and all!



Middle: First Day ceremony participants are all "smiles" for the cameras.

Right: Overview of the busy show floor.



### RPA Banquet Scheduled

The annual RPA Banquet takes place on Thursday, September 25 at the Morningstar Restaurant, 850 Merchant's Rd. near Culver. Doors open at 5:30, dinner starts at 6:30.

Cost is \$15, state your choice of chicken, beef or veggie entrée, with soup, salad, dessert, and coffee/tea.

Everyone who attends may bring up to 5 lots for a live auction to take place after the meal. Reservations and checks (to RPA) must be received by September 11, otherwise the cost is \$20. Phone Ray Stone to RSVP (585-266-2524), send payment to the RPA PO box or bring to the first RPA meeting September 11.

---

### Constitution Committee Forms

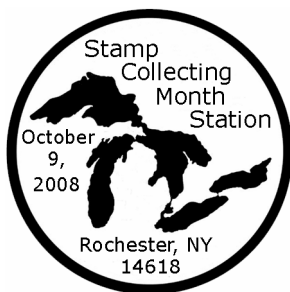
It has been many years since the RPA Constitution was reviewed with an eye towards completely revising it to meet the needs of changing times. Well, that time has come!

The new Board is seeking RPA members to form a Constitution Committee. This group of 3 to 5 people will be asked to completely examine our bylaws with the expectations of simplifying it while considering current and future requirements of the RPA membership. Results are expected to be ready for a vote by May of 2009.

Interested? If so, contact RPA President Ray Stone to be considered, or just to share your thoughts. (585-266-2526)

---

### Stamp Collecting Month Cancel & Event



Rochester Philatelic Assn.

We'll have a special cancel available at our October 9 meeting as part of our annual Open House celebration. It compliments the Great Lakes dunes stamps being issued October 2.

That meeting will also feature a special Kid's Hour from 6:30-7:30 introducing youngsters to our hobby through informative displays and lots of freebies. All are welcome to join them.

---

### RPA Forum

This new column will feature issues and

viewpoints on a variety of topics brought to the forefront by you, the membership. What are your thoughts on the following? Let's get things started on the subject of meetings:

- I'd like to see more RPA meetings about...
- I'd attend more RPA meetings if...
- If only RPA meetings were...

Should the RPA schedule one meeting a month on a Saturday or Sunday afternoon to allow other members to attend who might not be able to get out in the evenings?

Feel free to send your opinions on these or other subjects to Tom Fortunato by snail-mail to the club's PO box or by email.

---

### Meet-A-Member

This new column will introduce you to a fellow RPA member. He or she may not be the most vocal at RPA meeting, perhaps only attends meetings occasionally, could be new to our group, or may be a more senior member who just can't get out like he or she used to.

Contact Tom if you would like your profile featured in this column in the future!

---

### Board Meeting Notes

The RPA Board met on Monday, July 21 to discuss a number of matters. Members of both the old and new Board were present.

Discussions included the following topics:

- The Board authorized Joe Doles to buy up to 20 panes of Plexiglas for replacing broken sheets in our ROPEX exhibit frames.
- It was agreed that a complete inventory of RPA assets was needed to ensure our insurance could cover any loss, including our club library, exhibit frames, etc.
- The Board unanimously voted to not accept an offer to rent our exhibit frames for use at Albany's Quadricentennial Stamp Expo next September due to possible damage and transportation concerns.

## Unique Worldwide New Issues



Has anyone picked up this new stamp yet, issued March 12 by Austria in honor of June's UEFA EURO 2008 soccer championships held there? It's made of the same material a

soccer ball is, and bears the Adidas logo. At 3.75 Euros, about US \$6, it won't see much actual postal use, but was tested for months beforehand to ensure it could!

---

## U.S. Stamp Program: September-October

Sept. 2- 42c Flags of our Nation issue (second series of 10 coil stamps)

Sept. 5- non-denominated sea coast coil

Sept. 8- 42c Latin Jazz

Sept. 18- 42c Bette Davis

Sept. 23- 42c Eid

Oct. 2- 42c Great Lakes dunes (pane of 10)

Oct. 3- 42c Tail Fins & Chrome (5 stamps)

Oct. 17- 42c Alzheimer's Awareness

Oct. 23- 42c Christmas Nutcrackers (4 stamps, pane, booklet, ATM pane formats)

Oct. 23- 42c Madonna and Child by Botticelli

Oct. 24- 42c Hanukkah, 42c Kwanzaa

---

## Constitutional Amendments

Two Constitution amendment clause changes have been recommended as follows. These proposed revised texts and the current texts will appear in the next H&T issue, to be voted on by the membership by year's end.

### 6.0 RPA Officers Selection, Duties & Eligibility

6.0 The officers, who are elected for a *two* year term, serve without salaries or compensation.

### 5.0 Board of Governors

5.1.12 The Board of Governors shall adopt a prudent monetary policy *so as not to exceed \$750 per item* without the membership

approval by written vote, excluding a current insurance policy premium and any ROPEX expenditures. Club funds shall be dispersed only by the treasurer as authorized by the Board of Governors.

---

## Upcoming Area Stamp Shows

Sept 14 Syracuse Syracuse Stamp, Coin & Collectibles Show. Holiday Inn- Carrier Circle, exit 35. Hours: 10-5. Bourse.  
Contact: Ed Bailey, (315)452-0593.

Oct 17-18 Big Flats STEPEX Stamp Show  
Sponsored by the Elmira Stamp Club.  
American Legion Post, 45 Olcott Road South.  
Hours: 10-6, 10-5. Dealers, exhibits, US Postal Service, show cancel and cacheted envelopes, junior activities. Email: alatholleyrd@aol.com

Nov 2 Rochester RS Stamp Show  
Eagles Club, 1200 Buffalo Rd (Route 33).  
Hours: 10-4. Bourse.  
Contact: John Nunes, (518)399-8395.  
Email: Nunesnook@aol.com

Nov 7-9 Toronto Toronto Postage Stamp Show  
Queen Elizabeth Building, Exhibition Place. Hours: Fri 11-6, Sat 10-6, Sun 10-4.  
Dealers, Canada Post. Bourse.  
Email: secretary@csdaonline.com  
Website: <http://www.csdaonline.com/shows/>

Nov 8-9 Syracuse Syracuse Stamp, Coin & Collectibles Show, Holiday Inn- Carrier Circle, at Thruway Exit 35. Hours: 10-5, 10-5. Bourse.  
Contact: Ed Bailey, (315)452-0593.

---

## Next RPA Meetings

Thursday, Sept 11..... ATA Olympics DVD  
Thursday, Sept 25..... RPA Banquet/Auction  
Thursday, Oct 9..... Stamp Collecting Month  
Open House, Kase's FDC Creations  
(special Kids Hour 6:30-7:30)  
Thursday, Oct 23..... Everyone-A-Dealer Night  
Thursday, Nov 13..... APS Show: Plate # Coils  
No second meeting in Nov. (Thanksgiving)

## Are Your Dues Due????

Take a good look at the mailing label found here. If you find a checkmark in the box then you probably aren't paid up for the 2008-2009 term. Dues are \$20 per year, and yes, you may pay in advance!

Bring your checks made payable to "RPA" to an upcoming meeting or send them to our post office box address.

---

## H&T Going Digital!

All Hinges & Tongs issues have been available on the RPA web site for downloading for quite some time. E-newsletters are popular, and the RPA is looking at this as a way of getting news out to you more quickly and at a lower cost. Using the insert in this issue, tell us whether you would like to receive your H&T issues electronically as a PDF file or by snail-mail!

## On the Web...

RPA life member Nancy Clark hosts the Internet radio broadcast "APS Stamp Talk" live from 4 to 5 PM Eastern on the 2<sup>nd</sup> and 4<sup>th</sup> Wednesday of every month. Here shows feature guests and she takes calls at 888-327-0061. You can also hear prior broadcasts anytime in the Archives.

Check it out online at:  
<http://www.wsradio.com/apsstampstalk/>

---

## Contact Us

### President

Ray Stone - 585-266-2524

### Corresponding Secretary/H&T Editor

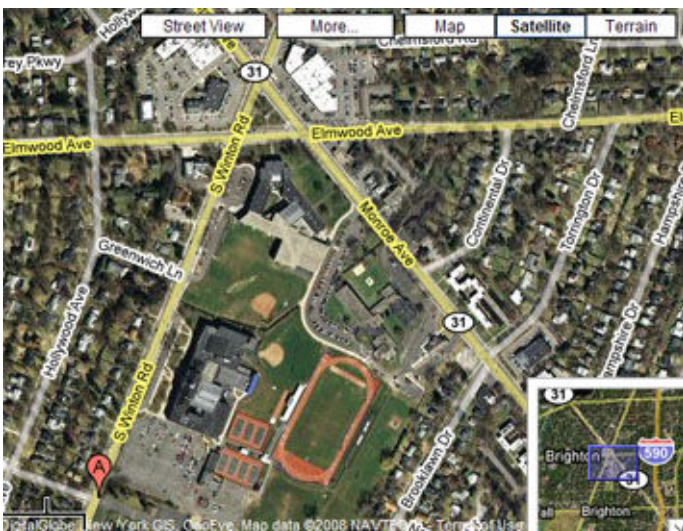
Tom Fortunato - 585-225-6822  
[stampmf@frontiernet.net](mailto:stampmf@frontiernet.net)

Next Board Meeting: Aug. 28  
Next ROPEX Meeting: Sept. 12

---

**The Rochester Philatelic Association**  
**PO Box 10206 Brighton Station**  
**Rochester, NY 14610-0206**

RPA Meetings are at Twelve Corners Presbyterian Church  
1200 Winton Rd South, just south of Brighton High School



If checked, your 2008-9 dues are due! Send payment (\$20) to our PO box or bring it to an upcoming meeting.

All members- we need to update everyone's contact info! See the article above for details!

## Special Hinges & Tongs Insert

### Our Contact Records Need Updating!

It has been a long time since we updated our membership database and we need your help! Provide us with the following information as seen below. All information will be kept confidential and not be used other than for club matters.

Submit this information to us in any of the following ways:

- Use or copy the form below, or simply send this information to us, mailing it to our PO box at:  
**PO Box 10206 Brighton Station, Rochester, NY 14610**
- Email this information to Joe Doles at: [jdoles@rochester.rr.com](mailto:jdoles@rochester.rr.com)
- Submit this information in person to Joe at the first RPA meeting on September 11.

---

---

(Please print)      **All members are to submit this information to be received by September 11.**

RPA Member Name \_\_\_\_\_

Address \_\_\_\_\_

City \_\_\_\_\_ St/Pr \_\_\_\_\_ Zip \_\_\_\_\_

Telephone \_\_\_\_\_ Age \_\_\_\_\_ Birth date (optional) \_\_\_\_\_

Would you like to receive a 2008-9 membership card?    No    Yes, by mail    Yes, at a meeting

Do you have an email address? (select one)    Yes    Yes, and add me to the RPA email list    No

Email \_\_\_\_\_ APS Member?    Yes    No

I wish to receive Hinges & Tongs (select one):    Via a web link to a PDF document    By snail mail

Use this space for questions, comments or suggestions...

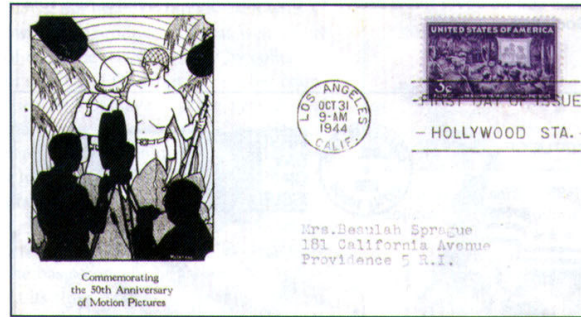
RPA member Ada Prill wrote a nice piece entitled, "First Day Cover Vocabulary" as part of her "Back to Basics" series in the American Philatelist. Here are the last two pages of her four-page article that appeared in the July 2008 issue of the AP.

It features several RPA related covers as you can see!

See your own copy of the AP article or ask to see the club's copy if you do not receive it yourself.



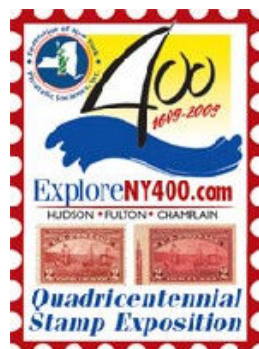
Rochester Philatelic Association cachet with three unofficial cancels for the three versions of the 29-cent flower stamp, each issued on a different date.



Addressed FDCs were the norm in 1944. McIntyre cachet.



An unusual but appropriate use of a revenue stamp on a FDC with Rochester Philatelic Association cachet.



Attend the Quad Stamp Expo, Sept. 25-27, 2009 in Albany. 100+ dealers, exhibits, and much more!  
stampexpo400.org



A Rick Kase esoteric First Day creation.

cancel. The combinations are limited only by your creativity.

Speaking of creativity, perhaps the most imaginative First Day "Covers" are not envelopes at all. *Esoteric* FDCs involve getting the first-day cancel on some object other than an envelope or card, maybe not even paper. Brad Sterling had a tulip stamp first-day cancelled in Holland, New York, on a pair of wooden shoes. I took a bottle of vinegar and a packet of hotel coffee ("joe") to be

cancelled at the ceremony for "Vinegar Joe" Stilwell. But the champion of the esoteric FDC is Rick Kase, who has had toy trains, wine bottles, cat food cans, and a pair of glasses, among other things, made into First Day "covers." I know of no one who has more fun with FDC collecting than Rick. And that kind of enjoyment is what's important in a hobby.

As always, I welcome your comments and stories. My e-mail address is [ada@stamps.org](mailto:ada@stamps.org), but the only way to get

There are several reasons for a cover to have these extra stamps. If the stamp being issued is of a low denomination, enough extra postage must be added to each cover to make up the first-class letter rate. On the cover for the 5-cent circus wagon stamp circus-related stamps were added to bring the total postage up to the correct 1990 rate of 25 cents. This cover is also considered an unofficial. The stamp was in fact issued in Syracuse, but the fairground cancel is not the official cancel for the First Day.

Often, however, FDC makers simply want to decorate their covers with related stamps. Usually there is some fairly obvious relationship between the new stamp being issued and the older stamp(s) that are added. It is rare to use a revenue stamp as part of a combo, as was done on the stock exchange cover.

**Warning:** you are not allowed to use stamps issued AFTER the First Day of the primary stamp, even if you are sending your cover to be canceled during the post-issue grace period.

Another way you can get creative is to find older FDCs and add new stamps to enhance them. A FDC with separate First Day cancels from more than one issue is called a "dual."

When the stamp for the Presidential Libraries was issued in 2005, I sought out previously-issued FDCs that related to individual presidents and used them to make duals for the new stamps. The three versions of the 29-cent flower stamp all had their official issues in Rochester, New York, so the East Bloomfield cancels make the Rochester Philatelic Association both an unofficial and a dual (triple?).

A favorite subspecies of dual FDCs is created when more than one country issues a stamp honoring the same event, place, or person, and both countries' stamps are cancelled on the same envelope. This can be a challenge if one of the countries involved does not allow FD cancels to be applied after the relevant date. In that case, the cancel from the more restrictive country is obtained first, with the second cancel being applied during the grace period. If you look carefully at the Statue of Liberty dual illustrated, the U.S. stamp covers a tiny piece of the French postmark.

Although most duals you see are FDCs, not all duals have two First Day cancels. One or both can be an event cancel or other pictorial or even an ordinary town cancel with some tie-in to the other stamp and

past my spam filter is to put *APS* somewhere in the subject line. If you don't get a prompt reply, do try again. I don't stay home all that much, and sometimes messages inadvertently get overlooked when I return and have dozens of e-mails to answer. Postal mail may be sent to me at the APS address in the front of this magazine, but it may take two weeks or longer to reach me, so please be patient.