



Hinges & Tongs

ROCHESTER PHILATELIC ASSOCIATION, INC
P.O. Box 10206, BRIGHTON STATION
ROCHESTER, NEW YORK 14610-0206

May – June 2007

ROPEX National Stamp Show

Coming Soon To Rochester
Details on Page 3

We Need Your Help!

It takes volunteers like you to make ROPEX a reality! We can really need your help during setup and take down.

Setup starts a day earlier this time, on Wednesday, May 16 between 3-6 PM at the ESL Centre. Dealer tables and chairs are scheduled to be delivered there by 1 PM, and our exhibit frames will come around 3 PM. The more hands that are around the sooner everything will be up and operational. Anything left undone will be finished off on Thursday morning starting at 9 AM.

The show closes at 3 PM on Sunday, May 20, and again we will look to you to lend a hand in helping conclude another successful show.

Please consider coming for as much of this time as you can!

Annual Business Meeting & Election of Officers June 28, 2007 Details on Page 2



**Strawberries
Immediately following
the business meeting**

RPA OFFICERS

2006 – 2007

President- **Rick Kase**

Vice President- **Dave Bombard**

Treasurer- **Rich Spinelli**

Corresponding Secretary

Joe Doles

Recording Secretary

Diane Bombard

Board of Governors

Ray Stone

(term expires June 30, 2007)

Bob Kingston

(term expires June 30, 2008)

Chuck Schultz

(term expires June 30, 2009)

Immediate Past President

Paul Gerwitz

Appointments

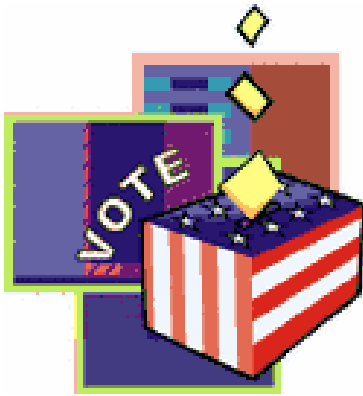
Librarian - **Joe Doles**

Articles may be submitted for publication
to: **Joe Doles, Editor**

**105 Lawson Rd.,
Rochester, NY 14616-1444.**

Neatly hand-written or double
spaced typewritten or sent electroni-
cally to **JKD52@aol.com.**

Any originals submitted for
scanning will be returned if re-
quested.



Annual Business Meeting & Election of Officers June 28, 2007

The annual business meeting has been scheduled for the last meeting of the club year. This was done to allow the thirty day period between the mailing of ballots and the final count as directed in our Constitution.

A ballot has been enclosed with this newsletter. It must be mailed back in time for the June 28 meeting. If you are able to attend the meeting you can bring it with you and deposit it in the ballot box.

The candidates are; for President – Ray Stone, for VP – Dave Bombard, for Treasurer – Rich Spinelli, for Recording Secretary – Diane Bombard, for Corresponding Secretary – Joe Doles or Frank Tritto, for Governor-at-Large – Dave Robinson

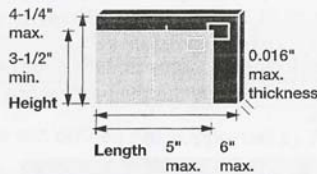
The Board of Governors of the RPA consists of the elected officers, three elected Governors-at-Large, and the immediate RPA Past President. The remaining two Governors-at-Large are Chuck Schultz and Bob Kingston. The immediate Past President is Rick Kase. The Governors-at-Large are elected for a three year term.

Pricing by Shape FROM THE USPS

The new pricing for First-Class Mail puts an emphasis on shape to more accurately reflect our true cost of doing business. The shapes for determining prices are: postcards, letters, large envelopes (flats) and packages.

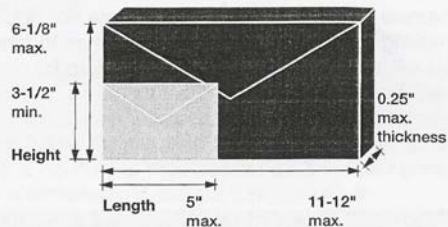
The single-piece 1-ounce letter rate will increase 2 cents to 41 cents, and the single-piece postcard rate also will increase 2 cents, to 26 cents. The single-piece 1-ounce rate for large envelopes will be 80 cents, and the single-piece rate for packages will be \$1.13 for the first ounce. The additional-ounce rate for all single-piece letters, large envelopes and packages will decrease to 17 cents.

Pricing by shape reflects changes in processing and transportation costs. The new pricing system gives customers the opportunity to obtain lower rates as they find ways to prepare their mail in shapes that reduce processing costs for the Postal Service. If the contents (documents) intended for a large envelope can be folded and placed into a letter-size envelope, the mailer can save 39 cents on the first ounce. On the other hand, mailers may determine that the perception of a large envelope better communicates their message to the addressee. Likewise, some items traditionally prepared and mailed as a package can be reconfigured and placed in a large (expansion) envelope, saving the mailer 33 cents on the first ounce — additional ounces will be 17 cents each.



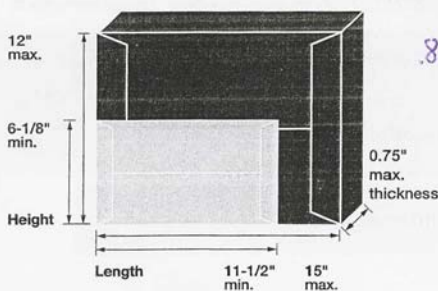
Postcard

.26



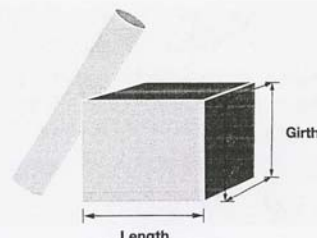
Letter

.41 +17



Large Envelope (Flat)

.80 +17



Package

1.13 +17

ROPEX National Stamp Show Coming Soon To Rochester

The Rochester Philatelic Association is again proud to sponsor ROPEX 2007, its annual national level stamp show, taking place May 18-20 at a new location, the ESL Sports Centre on the campus of Monroe Community College, 2700 Brighton-Henrietta Town Line Road. Show hours are 11-6, 10-5, and 10-3 respectively. Admission and parking are free.

A different theme will be honored each day: 50th anniversary of Sputnik (Friday), Celebrating Ice Hockey (Saturday), and 100th anniversary of the first Scout camp (Sunday). Commemorative cancels and cachets will be available at the show.

The event features 25 dealers from around the country and Canada with stamps, covers, postcards, supplies and an assortment of other philatelic items, along with coins, ephemera, and paper collectibles. Also attending will be the US Postal Service and United Nations Postal Administration with the latest in their stamp offerings. A special Cachet Makers Bourse will be on the show floor Saturday between 1-6 PM.

ROPEX is also a World Series of Philately event, one of 30 shows that bring together the best stamp exhibits from across the country vying to be selected the "Best in Show." Over 160 frames of competitive displays are already entered, with more expected before opening day. The judging panel includes Doug Clark (chief judge, Marstons Mills, MA), Nancy Clark (Marstons Mills, MA), Allison Cusick (Columbus, OH), Tom Lera (Falls Church, VA), and Steve Suffet (Sunnyside, NY). The judging critique is scheduled for Saturday between 3-4:30 PM. Major awards are handmade decorative mirrors.

An "Early Bird" bourse takes place between 9:30-11 AM on Friday for interested dealers and collectors. Entry is \$20.

The Empire State Postal History Society holds its annual meeting on Saturday from 1-2 PM, preceded by an hour-long trading hour. Other scheduled meetings are: ACE- Art Cover Exchange (Friday, 1-2 PM), American Philatelic Society Town Meeting (Saturday, 11-Noon), American Association of Philatelic Exhibitors Seminar (Saturday, 2-3 PM), and a Federation of New York Philatelic Societies gathering (Sunday, 1:30-2:30).

An election for American Philatelic Society officers takes place between May and June this year. All candidates for office are welcome to attend ROPEX and informally meet with voters.

Youngsters can participate in many ROPEX activities. A special youth booth will be manned Saturday and Sunday filled with electronic games, free stamps and covers, and knowledgeable collectors willing to share their expertise.

Boy Scouts have the opportunity to learn about collecting and earn a merit badge at the same time. Instruction will be given Sunday from 10-3 by trained RPA members in all aspects of badge requirements. Arrive promptly at 10 AM to participate in this free offering. Pre-registration is appreciated.

Members of the public are invited to bring their stamps and other paper collectibles to ROPEX for a free informal appraisal of their holdings. Show dealers are always interested in buying material for their clients should you wish to sell your material.

A snack bar/restaurant is on site and will be open for show-goers during show hours. The show site is very close by a number of restaurants for every taste and budget. Marketplace Mall is a mile away with a food court and over 100 stores. Major retailers are throughout the area, as are hotels and motels. Visitors are urged to make hotel arrangements as early as possible to avoid disappointment.

The ROPEX banquet takes place Saturday evening beginning at 6:30 PM at the ESL restaurant overlooking the bourse floor. Tickets are \$25 each. The buffet dinner will feature prime rib, pasta and all the trimmings. Reservations must be received by May 14 by Ray Stone. See him at a meeting or call him.

See the ROPEX web site at <http://www.geocities.com/rpastamps/ropex.html> for additional information about the exhibition and a complete schedule of events. For questions or registration for any of the above activities, phone Ray at 585-266-2524 or email stampmf@frontiernet.net.

New Rate Issues FROM THE U.S.P.S.

Florida Panther (post card price)

26 cents – on sale May 12

This stamp depicts a highly stylized illustration of a Florida panther (*Puma concolor coryi*). This large tawny cat is related to the mountain lion — also known as a cougar or puma. Most active between dusk and dawn, the Florida panther is capable of short but quick bursts of speed while pursuing prey. Its diet includes white-tailed deer, small mammals, and birds.

Florida panthers are rare and elusive animals. Today, fewer than a hundred of these animals remain in the woodlands and wetlands of southern Florida.

Nationally known illustrator Nancy Stahl used a photograph of a Florida panther as the basis for her stamp art. The leaves in the background are decorative elements and are not meant to represent any specific plant. Three other 2007 issuances will also feature illustrations by Nancy Stahl: the *Bighorn Sheep*, *Wedding Hearts*, and *Holiday Knits*. Her previous projects for the U.S. Postal Service include the *Art Deco Eagle* (2001) and the *Snowy Egret*



Big Horn Sheep (2nd ounce price)

17 cents – on sale May 29

This stamp features a stylized drawing of a bighorn sheep (*Ovis canadensis*). This kind of sheep is found from southwestern Canada to northern Mexico; its range includes the colder, higher elevations of the Rocky Mountains and some of the hottest, most arid regions of the American Southwest and Mexico. To create the stamp image, artist Nancy Stahl worked from photographs of bighorn sheep. Three other 2007 issuances will also feature illustrations by Nancy Stahl: the *Florida Panther*, *Wedding Hearts*, and *Holiday Knits*. Her previous projects for the U.S. Postal Service include the *Art Deco Eagle* (2001) and the *Snowy Egret* (2004).

Margaret Chase Smith (2 ounce price)

58 cents – on sale June 13

With this eighth issuance in the *Distinguished Americans* series, the Postal Service honors Margaret Chase Smith, who in 1948 became the first Republican woman elected to the U.S. Senate. At that time, having already served in the House of Representatives, she also became the first woman to serve in both houses of Congress. After leaving the Senate, Smith served as a visiting lecturer at various colleges and universities. She received nearly a hundred honorary degrees. In 1989, President George Herbert Walker Bush awarded her the Presidential Medal of Freedom, the country's highest civilian honor. Margaret Chase Smith died in her hometown of Skowhegan, Maine, on May 29, 1995. She was 97 years old. Artist Mark Summers created the portrait on the stamp. The artwork is based on a photograph by the Harris & Ewing studio, dated 1948. Summers is noted for his scratchboard technique, a style distinguished by a dense network of lines etched with exquisite precision. He also created art for several other stamps in this series: *Joseph W. Stilwell* (2000), *Claude Pepper* (2000), *Hattie W. Caraway* (2001), *Edna Ferber* (2002), *Wilma Rudolph* (2004), *Albert Sabin* (2006), and *Jonas Salk* (2006).



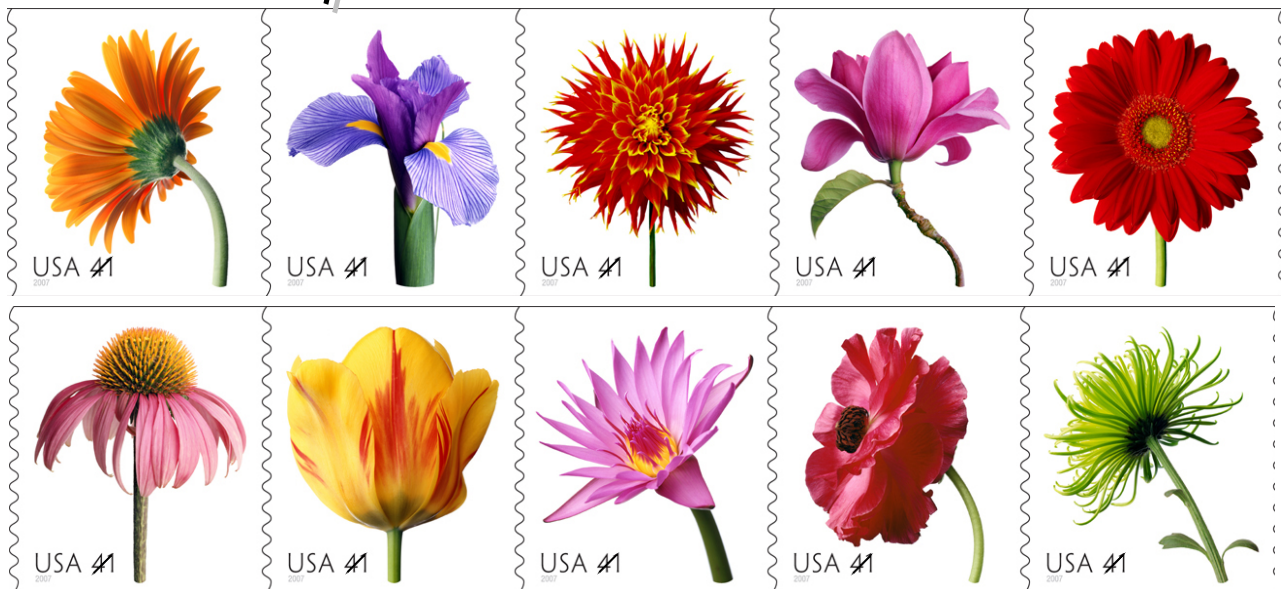
Harriet Beecher Stowe (3rd ounce price)

75 cents – on sale June 13

The ninth issuance in the *Distinguished Americans* series honors Harriet Beecher Stowe (1811-1896), author of *Uncle Tom's Cabin*, one of the most influential novels in American history. Stowe also penned several other novels, as well as children's stories, poems, and nonfiction works. She was a frequent contributor to publications such as *Godey's Lady's Book* and the *Atlantic Monthly*. Harriet Beecher Stowe was born in Litchfield, Conn., on June 14, 1811; she died in Hartford, Conn., on July 1, 1896. Artist Mark Summers based his portrait of Harriet Beecher Stowe on a circa 1855 stipple engraving by English engraver Francis Holl (1815-1884), which in turn was based on an earlier portrait of Stowe by English painter George Richmond (1809-1896). The engraving is from the collection of the Smithsonian Institution's National Portrait Gallery in Washington, D.C.



41¢ Beautiful Blooms



41¢ Beautiful Blooms (ten different designs) PSA double-sided booklet of 20 and PSA coil of 100
Friday, August 10th PORTLAND OR 97206-9998 (APS StampShow) and nationwide



PHILADELPHIA — If it could ring, it would resonate freedom and independence from using one or two-cent stamps to mail letters when stamp prices change in the future. The U.S. Postal Service (USPS) today (April 12) introduced its latest consumer innovation by dedicating the Forever Stamp next to the patriotic icon it depicts. Featuring the Liberty Bell image and the word “forever,” the Forever Stamp — available nationwide today — is good for mailing one-ounce First-Class Mail letters anytime in the future — regardless of price changes.

“We are making history this morning,” said USPS Board of Governors Vice Chairman Alan C. Kessler. “And what better place to make history than right here in Philadelphia — the ‘Cradle of Liberty,’ — alongside the Liberty Bell.”

The Forever Stamp will always be available at the price of a First-Class Mail stamp in effect at the time of purchase. To introduce the stamp to the public, the Postal Service is offering the stamp today at 41 cents. Customers may use the stamp as soon as they wish, but stamp prices will not change until May 14. When prices change in the future, the Forever Stamp will sell at the new one-ounce, single-piece First-Class Mail price.

“The first U.S. postage stamps appeared in 1847,” Kessler added, referring to the five-cent Benjamin Franklin stamp that was good for mailing letters up to 300 miles, and the 10-cent George Washington stamp for delivery beyond that. “Let history now record that the first Forever Stamp was dedicated on April 12, 2007, in the birthplace of American democracy and bearing the eternal symbol of American liberty.”

There are no limits on customer purchases. Beginning today, April 12, the Forever Stamp will be available in booklets of 20 through www.usps.com, by calling 1-800-STAMP-24 and at Post Office retail counters nationwide. Customers may also purchase the stamps from selected Post Office vending machines. Starting May 14, Automated Teller Machines (ATMs) and Automated Postal Centers will begin offering the Forever Stamp in sheets of 18. Also, many participating convenience stores, grocery stores, drug stores and other retailers will also begin selling Forever Stamp booklets of 20.

ADVO card leads to recovery of 144th missing child

The Postal Service and ADVO are proud to announce the recent recovery of 6-year-old Jonathan Smalley last week in the Tulsa, OK, area. He was missing for more than 2 years from his home in Peoria, IL. Jonathan is the 144th child to be safely recovered as a direct result of ADVO's “America's Looking for Its Missing Children” program.

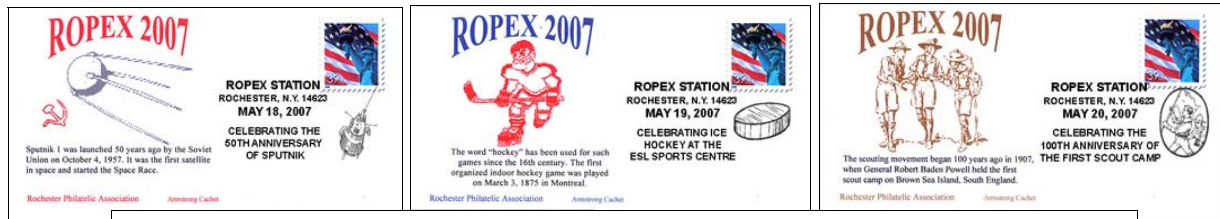
Since 1985, USPS has participated in a nationwide effort to recover missing children. Each week, the Postal Service — with direct mailer ADVO and the National Center for Missing and Exploited Children — mails “Have You Seen Me?” cards to 75 million households.

Remaining Club Schedule

MAY 10 To Be Announced
MAY 16 – 17, Set up for ROPEX
MAY 18, 19, 20 **ROPEX Stamp Show**
MAY 24 To Be Announced

JUNE 14 To Be Announced
JUNE 28 Annual Meeting & Elections
& Strawberries.

Programs are needed. Joe Doles is willing to work with anyone to put together a slide presentation for you. All you need to do is gather up your items you would like to show and Joe will do the rest. We can even get someone else to do the presentation, with your information, if you are uncomfortable addressing the group.



**Show Covers & Cancels available at the show or by mail
from the club PO Box. \$2.00 each or a set of 3 for \$5.
You must enclose an SASE.**

Meetings are held at the Twelve Corners Presbyterian Church, 1200 South Winton Rd., Rochester, N.Y. 14618. Regular meeting times are 7:00 PM to 9:00 PM. Programs start at 7:30 PM sharp.

Hinges & Tongs

Rochester Philatelic Association, Inc.
P.O. Box 10206, Brighton Station
Rochester, N.Y. 14610-0206

FIRST CLASS MAIL

2007 – 2008

Dues Are Due September

Please send your \$20.00 annual dues
to the Club's PO Box

Attention

Rich Spinelli – Treasurer