



CHAPTER MEMBER

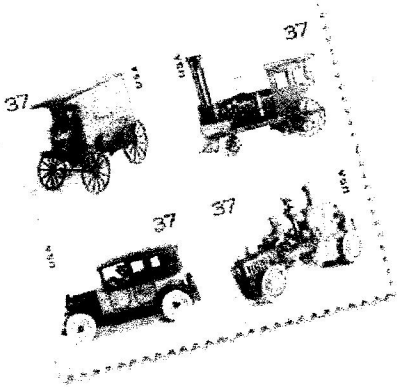
Hinges & Tongs

ROCHESTER PHILATELIC ASSOCIATION, INC
P.O. Box 10206, BRIGHTON STATION
ROCHESTER, NEW YORK 14610-0206

Aug.-Sept. 2002

CORRECTION

The ad on page 6 for CNY Stamp & Cover Show shows the incorrect exit. It should be Exit 33. Also the e-mail should be jchrist6@twcny.rr.com



Rochester's Latest First Day Ceremony a Success

By Tom Fortunato

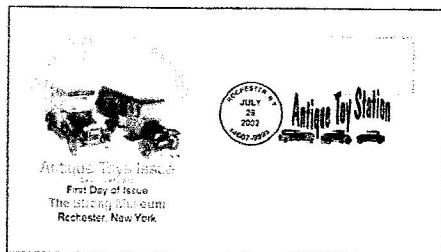
July 26 saw another first day ceremony come to Rochester, this time for the 37 cent denominated antique toy stamps in coils and two booklet

formats. The designs were similar to their non-denominated cousins issued in June before the latest postal rate increase.

The depicted toys are all part of the vast collection at the Strong Museum which hosted the affair. Members of the RPA and Federation of Central New York Philatelic Societies were especially welcome, being given the opportunity to receive individual official USPS invitations for the ceremony.

The doors to the museum opened at 8:30 for the 9 AM ceremony.

On hand awaiting the rush were RPAers Ray Stone, Jim Picuch, and Tom Fortunato who were selling club covers designed by Joe Doles. Joe additionally designed the commemorative cancel for the event. Also there were two dealers from out of town with some of their own cachet designs,



and the museum itself which sold a variety of envelopes with their corner card logo on them.

Participating in the half hour ceremony itself were John Montague, Postmaster of Rochester; G. Rolie Adams, President and CEO of the Strong Museum; Patricia Hogan, Strong Museum Curator; Nicholas Fabozzi, USPS Western NY District Manager; and Sally Andersen-Bruce, photographer of the stamps.

The club sold \$166 in advanced sales of the covers, and another \$572 worth of new and some older RPA covers at the event.

Additional orders are coming in by mail, so we've easily netted at least \$500 in profit from the event. Once again, thanks to all.

PROGRAM SCHEDULE

Sept. 12 APS Slide Show

A History of U.S. Postage Meter Impressions by Roger H. Edwards

Sept. 26 ATA Slide Show

That's Entertainment

Oct. 10

Post Office Tour- GMF

Meet at the employee's entrance on the west side of the building on Jefferson Rd. at 7 p.m.

Oct. 24 Guest Speaker

Paul Gerwitz - Using your personal computer In stamp collecting.

Nov. 14 Guest Speaker

Ray Stone - Buffalo's Transportation Coil - The 10¢ Canal Boat issue. Slides with live narration by the author.

Nov. 26 No meeting.

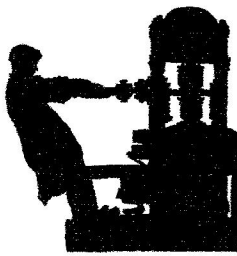
Dec. 12 Live Auction

All RPA members are requested to bring in up to five lots for auction. This will be a called auction with 5% of the selling price going to the RPA treasury.

Dec 26 No meeting

✱ Happy Holidays ✱

We meet on the second and fourth Thursday of most months between September and June. We meet at the Twelve Corners Presbyterian Church, 1200 S. Winton Rd. next door to the Brighton High School. A buy/sell/trade period runs from 7-7:45 PM, followed by the formal meeting. A silent auction concludes most meetings.



The success of your club's newsletter is dependent in part on what is submitted for publication. Please, if

you have something to share send it to the editor. We are always looking for positive input, so why don't you drop me a line today!

Joseph K. Doles...editor
105 Lawson Road
Rochester, NY 14616-1444

RPA OFFICERS

2002 – 2003

President- Jim Piecuch
Vice President- Mark Hull
Treasurer- George Fekete
Corresponding Secretary-
Joe Doles

Recording Secretary-
Tom Fortunato

Board of Governors

Chuck Schultz (term expires
June 30, 2003)

John Cali (term expires
June 30, 2004)

Ed Kawasaki (term expires
June 30, 2005)

Immediate RPA Past President-
John Kellas

Appointments

Membership Chairperson-
Florence Wright
Librarian- Joe Doles

Call for Programs

Have you ever thought of sharing your collecting interests with others? Now's your chance. We have several club members standing by to help you do just that. We can photograph your material for a future slide show at no cost to you. See **Joe Doles** or **Ed Kawasaki** for details. You'll be glad you did.

Where is the Excitement??

by George M. Hill, 3rd

You didn't find it in your easy chair at home. You have to attend a first day ceremony and be a part of the action by making a cover to cancel. To be there and see the hustle and bustle, hear the sounds, see the people, check the great covers on display, and above all get a copy of the program...then get it signed, apply a stamp and get it canceled along with your covers.

Next, find eager exchangers to trade covers or buy from those that want to sell. It is your best chance to get a collection of a given stamp all canceled FDC. The contributor's work varies as you might expect. That rare find of a cover that appeals to you is ever present if you search the crowds. Some "gems" are available to see first hand. You might even get the maker to sign the cover to make it more valuable.

Talking about signatures, you should stand in line, for surely there will be one, and get your program signed by the officials. It makes it more of a collector's item and more valuable should you decide to sell it in the future. I mention twice getting your program signed in this brief report, but the more unique you make this collectable bit of philatelic history the more meaningful it will be for you. When you realize the importance of "being there" for this brief time in history the more valuable what you are collecting becomes. It might start you on the journey of collecting "programs" from other FDC events.

There is more to philately than just stamps for a given country, topical, time period, post marks, and all the other ideas you already may have in

mind. Take the time to expand your horizon to include those times that personally can be marked in philatelic history with concrete (or at least paper) evidence of your active participation and social camaraderie with fellow cover makers in this very wide topic of being a "stamp" collector.

Time is of the essence. That's a legal expression but all the more true at a FDC event. You have to search quickly as people leave once the official festivities conclude. The "hangers-on" will gather and it is through these that you get the best shot since they generally have the greater interest in cover collecting through exchanging.

We had fun at the last event held here in Rochester for the debut of the denominated "Toys Stamps". If you missed it, watch for events that are near at hand for future FDC and make the trip to get in on the excitement.

The club has FDC's canceled on the date and would love to share these with you. Look for their availability at the next RPA meeting at a price you can afford so that you can add this local gem to your collection. While you are adding value to your personal collection you help the club, which in turn helps keep the dues at the low price we are privileged to pay.

Last but not least was the opportunity to see the actual toys that were the models for the current four Toys Stamps. All I have to say about all this can be summed up in two words, "active participation". There is so much to learn, see, feel, and be a part of that loyal FDC camp followers who are RPA members travel great distances to pursue this fun part of the hobby.

From the "Top" of the Barrel

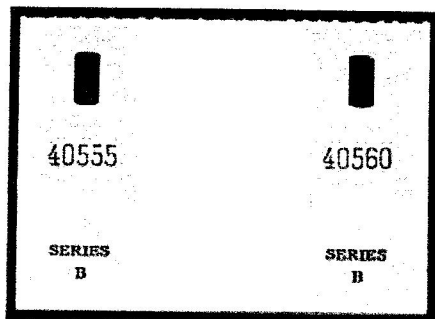
by Tom Fortunato

Chairman, APS Chapter Activities
Committee

stampmf@frontiernet.net

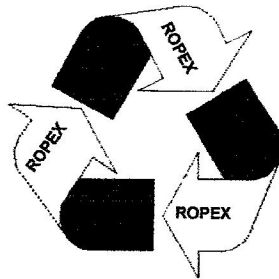
Have you heard of "lock" stamps? Below you'll find an example of this rather unknown area of back of the book American philately. I last saw an article about them a few years back in Linn's Stamp News. It dealt with U.S. Customs and similar seals (green, I believe) used to guarantee that the contents in the locked room were not tampered with after inspection. Note that these below are similarly without denominations of any kind. According to the dealer, these smaller cousins were used on individual barrels of liquor locked to guarantee that no additional "watering down substance" was added. That sounds plausible to me. They're not listed by Scott's.

Although a bit difficult to read, they have the inscription "U.S. Inter. Rev. Lock Seal," and in very small print, "Bureau of Engraving and Printing, Litho." They are rouletted horizontally all the way across and vertically through the gutters, leaving straight edges on the sides and bottom. When I spot-



ted them, there were 8 seals: 4 on each side separated by a wide gutter. Each "pane" started life as 10 seals mounted in a booklet at the

top. Here is the lower pair. Three additional pairs were attached, bearing black sequential numbers 40552 through 40555 on left handed seals, and 40557 through 40560 on the right. Additionally, there is scoring on each running from Liberty's left eye to the bottom of the frame line, running through the black overprint "SERIES B." Have you seen these before, or know more about their use?



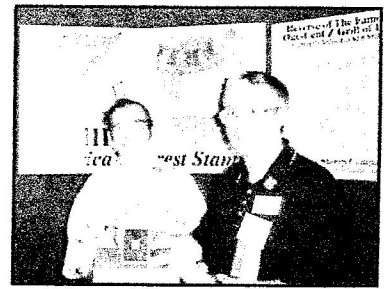
Recycle those Linn's!

No, don't throw them in the blue box for the trash man to carry away! Save them instead as hand-outs for **ROPEX 2003**.

Linn's and other philatelic publications used to send national stamp shows boxes of their newspapers and magazines for free to give to eager visitors. Now many of them are requesting a shipping and handling charge to receive them in bulk. For example, Linn's wants \$40 per hundred copies.

So let's do the next best thing. Save those Linn's, Stamp Collector, American Philatelist, and others and bring them to ROPEX 2003. Make sure you remove the address labels beforehand. If you would like to dispose of them before next June you can bring them to any meeting and **Joe Doles** will stockpile them for the club.

Now that's recycling at its best!



Why are these guys smiling?

Well, that's \$2.5 million dollars (insured value) at their fingertips. It's the most expensive U.S. stamp-the famous "Z Grill."

RPA members John Cali and Tom Fortunato were given the honor of placing the slabbed stamp into its secure casing during APS Stamp-show setup August 15 in Atlantic City just before the show's opening.

Listed in the "Scott's Specialized Catalogue of U.S. Stamps" as Scott 85A, the rather common looking definitive of 1867 is one of two copies known. The other is in the New York Library collection. The stamp's unique feature is its 11x14 mm grill of points.

This example was purchased by Donald Sundman of Mystic Stamp Company about four years ago and has been on display at major stamp exhibitions the past few years. It is encased by an inert plastic protective holder provided by PSC which graded and authenticated the stamp.

The Atlantic City show was perhaps the first time the Z Grill was left unguarded while on public display. Rest assured no one could get to it, as a clear plastic 4x4 inch block was bolted to the wooden base shown in the photo, making thievery impossible.

Or are stamp collectors just exceptionally honest people?

Rochester Philatelic Association, Inc.

Income Statement And Statement of Financial Position

July 1, 2001 – June 30, 2002

Presented to the
RPA Board and the Membership

Prepared by
George T. Fekete, Treasurer

August 22, 2002

Rochester Philatelic Association 2002 Income Statement July 1, 2001 - June 30, 2002

| Category | Revenue | Expense | Profit / (Loss) |
|--------------------|------------------|------------------|-------------------|
| ROPEX 2002 | \$ 16,909 | \$ 17,364 | \$ (45) |
| RPA Operating Fund | <u>1,657</u> | <u>2,829</u> | <u>(1,17)</u> |
| Total | <u>\$ 18,566</u> | <u>\$ 20,193</u> | <u>\$ (1,627)</u> |

| | |
|---------------------------|------------------|
| Bank Accounts (HSBC Bank) | |
| Certificates of Deposit | \$ 19,935 |
| Checking Account | 405 |
| Savings Account | <u>2,002</u> |
| Total Bank Accounts | <u>\$ 22,342</u> |

| | |
|---|------------------|
| Total Bank Funds | \$ 22,342 |
| Non-Cash Assets (Frames, Lights & Stamps) | 32,571 |
| Library | <u>2,750</u> |
| Net Worth | <u>\$ 57,663</u> |

Treasurer's Notes

- The ROPEX 2002 loss of \$429 was \$1,449 less than the ROPEX 2001 loss. Excluding the unanticipated \$300 charge because minimum room nights at the Best Western Inn were not met, ROPEX 2002 would have nearly broke even, losing \$155.
- RPA Operating Revenue was \$1,657, up \$464 from 2000 - 2001; RPA expenses were \$2,829, \$1,652 higher than 2000 - 2001. Spending in both years included one-time expenses: overnight freight \$616 in 2000 - 2001 and purchase of furniture for the RPA library / storage room \$371 in 2001 - 2002. Meeting room rental increased by \$460 in 2001 - 2002.
- RPA net worth decreased by 4% due to depreciation of non-cash assets by \$1,437 (-2 pts.) and a reduction of RPA cash by \$1,191 (-2 pts.).

Rochester Philatelic Association Operating Fund July 1, 2001 - June 30, 2002

| Revenue | Revenue | Expense | Profit / (Loss) |
|----------------------|-----------------|-----------------|-------------------|
| APS Circuits | \$ 3 | \$ 50 | \$ (47) |
| Awards | - | 35 | (35) |
| Banquet | 340 | 410 | (70) |
| Furniture | - | 371 | (371) |
| Hinges & Tongs | - | 298 | (298) |
| Insurance | - | 338 | (338) |
| Interest Income | 14 | - | 14 |
| Library | - | 115 | (115) |
| Meeting Hall* | - | 896 | (896) |
| Membership Dues | 1,165 | 104 | 1,061 |
| Programs | 135 | 184 | (49) |
| USPS Post Office Box | - | 28 | (28) |
| Total | <u>\$ 1,657</u> | <u>\$ 2,829</u> | <u>\$ (1,172)</u> |

| | |
|---------------------------------|-------------------|
| Beginning Balance: July 1, 2001 | \$ (104) |
| Profit / (Loss) | <u>(1,172)</u> |
| Ending Balance: June 30, 2002 | <u>\$ (1,276)</u> |

* Includes \$16 for evaluation of the Twelve Corners Presbyterian Church meeting facilities.

ROPEX 2002 Income Statement July 1, 2001 - June 30, 2002

| Category | Revenue | Expense | Profit / (Loss) |
|-----------------------------------|------------------|------------------|-----------------|
| Advertising | \$ 175 | \$ 694 | \$ (519) |
| Awards | - | 257 | (257) |
| Banquet | 989 | 740 | 249 |
| Show Covers | 1,104 | 309 | 795 |
| Dealer Bourse | 13,000 | 4 | 12,996 |
| Facilities (Diplomat Party House) | - | 10,540 | (10,540) |
| Exhibits | 1,393 | - | 1,393 |
| Hospitality Suite | - | 266 | (266) |
| Insurance | - | 185 | (185) |
| Jury | - | 1,318 | (1,318) |
| Meeting Refreshments | - | 49 | (49) |
| Postage (Advertising & Return) | 248 | 1,069 | (821) |
| Program Printing | - | 361 | (361) |
| Security | - | 1,119 | (1,119) |
| Staging | - | 452 | (452) |
| Total | <u>\$ 16,909</u> | <u>\$ 17,364</u> | <u>\$ (455)</u> |

| | |
|---------------------------------|-----------------|
| Beginning Balance: July 1, 2001 | \$ (203) |
| ROPEX 2002 Profit / (Loss) | <u>(455)</u> |
| Ending Balance: June 30, 2002 | <u>\$ (658)</u> |

ROPEX Update- We're Moving!

By Tom Fortunato

ROPEX 2003 is moving- both in venue and date! Mark your calendar now for June 20-22, 2003.

We've had a difficult time trying to break even these past two years with ROPEX. Simply put, our revenue wasn't covering our ever increasing expenses at the Diplomat. So it was time to look at alternatives.

Bourse Chairman Bob Steeb spent much of the summer investigating alternatives by phone and in person. Once the final four were presented to the committee, additional site visits we taken by an entourage of ROPEX personnel. Those four included: staying at the Diplomat, and gym/field house facilities at Nazareth College, St. John Fisher College, and Webster.

Among those options, the Webster Community Field House was the most attractive of the four and agreed to by the ROPEX committee as the best option. That building was built last year with 21,000 square feet of street-level floor space, parking for over 300 cars (with more if needed across the street), and is easily accessible off of the Route 104 expressway. It is on the property of Webster Thomas High School at the corner of 800 Five Mile Line Road and Publisher's Way, almost across the street from the Webster Ice Skating Rink, which is also managed by the town.

Due to contractual arrangements with other events, the Diplomat forced us to keep the show in the

winter. No matter where we moved to, everyone agreed that ROPEX should be held in more favorable weather. The dates available for Webster were fine- in mid-June. School is just finishing up at that time. Most vacations won't have started yet. We also have the benefit of the Webster Sports Booster Club which can run a concession stand throughout ROPEX and possibly help with other organizational aspects of the show.

Of course, no proposal is perfect. We won't have the luxury of a hotel right next to the show floor. The two nearest (and best) hotels are 1-2 miles away, and easy drive for visitors with cars, but a \$30 taxi ride from the airport each way. The field house is not air conditioned, but does have a forced-air circulating system which compensates for it.

It's not as cool as air conditioning, but should be fine. Lighting could always be better for the exhibit frames. We have to examine actual lighting conditions with the frames up to determine what, if anything, would be needed to augment the natural and artificial lighting already in place. We also need to be very cautious with the composite floor. It's a tough surface, but we need to watch out for gouges from the tables, chairs, and exhibit frames.

At the time of this writing, we are awaiting a contract to be written up by the Webster Community Partnership which runs the building. Barring any last minute glitches, it's a go!

The ROPEX committee wants to thank **Bob and Elli Steeb** for their accomplishments over some

12+ years. With the new facility selected and almost "sealed," they resigned their posts with the show, citing a need to slow down and devote more time to other endeavors. Also "retiring" from ROPEX is **Marge and Don Schleinig**, who have run our hospitality room for several years, and the committee salutes them as well.

ROPEX can always use RPA volunteers to assist on the committee or during the show itself. As Bob put it, "It's time for some of the 'youngsters' to step up to the plate." Please see ROPEX Chairman Tom Fortunato if you'd like to help out in any capacity.

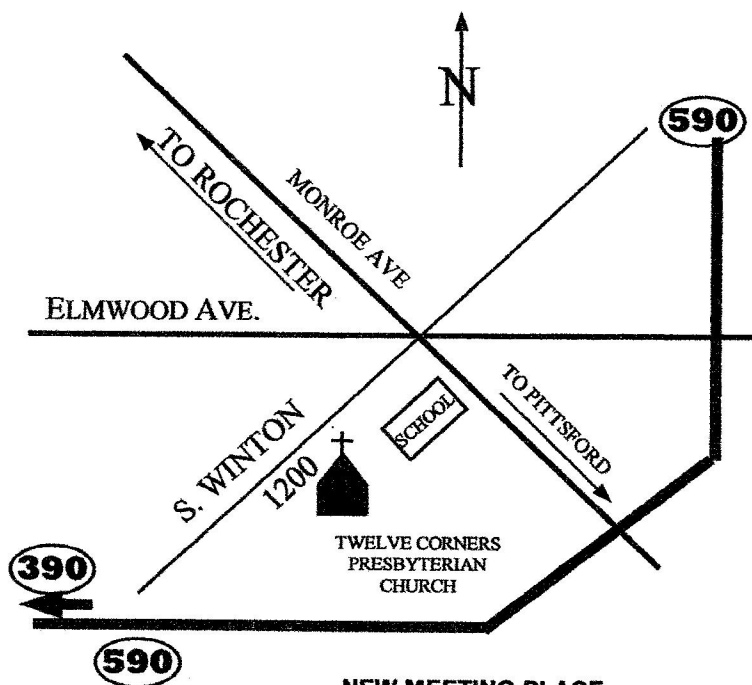


ACE Annual Meeting

The Art Cover Exchange will be holding it's annual meeting at

the Pauline Evans Library at 45 Cooper Rd. in Irondequoit. Starting at 9 AM on Saturday, Sept. 21. There will be exhibits and demonstrations on cover making by various members. This event is open to the public and the cancel illustrated above will be available to service your covers. Acers make covers and exchange them with members, some they may be meeting for the first time although they have been exchanging through the mail for years. Last year more then twenty five members from around the U.S. and from the U.K. attended. At 10 AM Sunday the group will meet again for it's annual business meeting.

Joe Doles, Paul Gerwitz, George Hill, Rick Kase, Dusty Miller, Ada Prill, and Erma Whitbeck belong to ACE and the RPA.



NEW MEETING PLACE
ROCHESTER PHILATELIC ASSOCIATION, INC.
TWELVE CORNERS PRESBYTERIAN CHURCH
1200 S. WINTON RD.
NEXT TO BRIGHTON HIGH SCHOOL

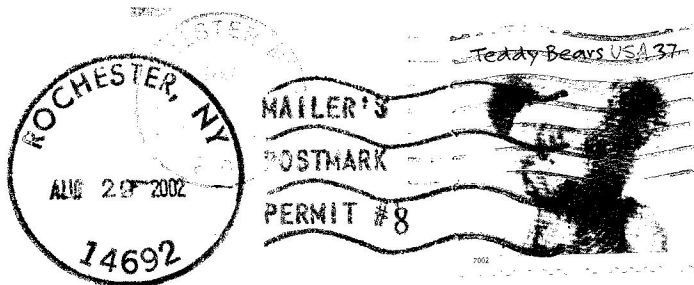
**CENTRAL NEW YORK
 STAMP & COVER SHOW**
MEET US AT THE CASINO!
 Saturday & Sunday
 October 12 – 13, 2002
 Doors Open @ 10:00 AM and Close @ 5:30 PM

Located at the
**Turning Stone Casino
 and Conference Center**
 Route 365, Verona, NY
 (Exit 52 off NYS Thruway I-90)

25 Dealer Bourse (35 tables)
 Adult and Junior Exhibits (16 and 6 page frames)
 Two Special Cachets and a Special Cancellation
 USPS Booth
 Door Prizes
 Free Admission and Parking
 Several Society/Organization Meetings

Contact: Joe Christofaro, 315-337-9608
 Jchris6@twcny.rr.vom

Hinges & Tongs
 Rochester Philatelic Association, Inc.
 P.O. Box 10206, Brighton Station
 Rochester, N.Y. 14610-0206



FIRST CLASS MAIL

Articles may be submitted to:
 Joseph K. Doles, editor
 105 Lawson Road
 Rochester NY 14616-1444

9205
 THOMAS FORTUNATO
 42 MAYNARD ST
 ROCHESTER NY 14615-2022

