



# HINGES & TONGS

ROCHESTER PHILATELIC ASSOCIATION, INC  
P.O. Box 10206, BRIGHTON STATION,  
ROCHESTER, NEW YORK 14610-0206

**September / October 1998**

Editor: Joe Doles

## TOPICAL WINNERS

Member **Ann Trigg**'s exhibit, *Ichthyology*, won the Reserve Grand, and a gold award at the National Topical Stamp Show in July.

Other RPA members' exhibits and their awards at the NTSS were: *Stamping Out Tuberculosis*, by **Florence Wright** – Vermeil, and the Medical Studies Award; *Figure Skating*, by **Alice Johnson** – Silver; *Some North American Music*, by **Marge Schleining** – Silver in Display Class; and *William Crawford and the Politics of the Early 19<sup>th</sup> Century*, by Douglas and **Nancy Clark** – Gold, and the APS Research Medal.

RPA president, **Tom Fortunato**, was apprentice judge.

This was the first year that the American Topical Association conducted its show, formerly called TOPEX, independently of any other stamp show. It was held in Falls Church, Virginia, southwest of Washington D.C., and featured a bourse of 45 dealers and 39 exhibits. There were five exhibits in youth class, as well as exhibits in display class and one-frame class.

## You are a Member, Too

Since you are a member of Rochester Philatelic Association, you also belong to the American Topical Association. RPA is a chapter member of the ATA, which has a lot to offer clubs and individual members with topical collecting.

At the NTSS, we met David Nye, new ATA first vice-president, and the current director of the ATA Chapters' page in the *Topical Time*, "Chapter Chatter."

We attended a meeting of chapter representatives, heard David Nye's promise to introduce some interesting topical activities for clubs to participate in during the coming year. You'll hear more about these in future H & Ts.

We met other chapter reps, and shared ideas and thoughts on topical programs.

If you collect topically, or are thinking about it, ask to borrow past issues of the *TT* from the Club library.

*Florence Wright, ATA Representative*

## Chat Room

The Hospitality Room at the National Topical Stamp Show in Falls Church drew lots of topicalists after the show banquet, July 19. We had a good RPA "delegation" there: Gordon and Mary Morison, Ann Trigg, Tom Fortunato, and Norm and Florence Wright.

The Morisons, former Rochester residents, have lived in Potomac, Maryland for a number of years. Before moving, they were very active members of the Stamp Club. Mary was president in 1960, and Gordon served in that office in 1968-69. Both held other offices, and worked at numerous ROPEX shows.

We had a good chat with them, and Mary recalled that she and Gordon were given Honorary Life Member status before they moved. "The club wanted to do something nice for us before we left," she said. "By now, we surely must qualify as real life members!" And indeed they do – Gordon joined in 1954, and Mary became a member in 1956.

## Are You Really A Member?

Which is another way of saying, "Have you paid your 1998-99 dues yet?"

In July, the Membership chairman mailed about 50 reminder postcards, and to date about half have responded by sending in dues for the coming year. Many thanks!

If you aren't sure if you are a paid-up member, give Florence Wright a call to check; if you KNOW you haven't renewed yet, please do - soon. Thanks.

## New RPA Life Member

**Jack Knight** is the newest Life Member of RPA. He received his plaque and Life member card at the annual club banquet June 19<sup>th</sup>.

Jack joins a prestigious (!) group of 29 other members who have achieved Life member status. To be a life member, one needs to hold RPA membership for 25 consecutive years.

When asked to say a few words at the presentation, Jack said that he never expected to get his Life Member when he joined 25 years ago at **age 65!** Much applause from the rest of the club.



Tom Fortunato and Jack Knight

## OFFICERS FOR THE 1998-1999 CLUB YEAR

Club officers elected at the annual meeting June 11:

**Tom Fortunato**, president  
**Edwin Kawasaki**, vice president  
**David Roehrig**, treasurer  
**Jim Trenton**, recording secretary  
**Joe Doles**, corresponding secretary  
**Ray Stone**, Board of Governors three-year term

FUROM PICKIN' & LICKIN', ISSUE #8, SUMMER SOLSTICE 1998

## I've Been Working on the Stamp Show

By Karen Barber, copyright 1997

[Editor's note: Karen wrote this song for ROPEX, one of several stamp shows for which she and her husband Duncan volunteer their time. The names listed are the names of real workers at that show. Workers with two-syllable names are featured, although other workers with shorter or longer names work equally hard! I'm sure other shows can figure out how to personalize the song for their own needs.]

To be sung to the tune of I've Been Working on the Railroad/Dinah, Won't You Blow Your Horn

I've been working on the stamp show  
All the live long day.  
I've been working on the stamp show  
And it doesn't even pay!  
Can't you see the frames assembled?  
And tables on the floor?  
Can't you see the mailing boxes?  
And dealers comin' through the door?

Someone's on the show floorwith Elli;

(Continued on page 3)

*(Continued from page 2)*

Someone's on the floor I know-ow-ow-ow.  
Someone's on the show floor with Elli,  
Setting up dealer's tables!

And singing, "Show time is almost here,  
Hustle your buns, let's go-o-o-o!  
There's more work that need to be done,  
Setting up dealer's tables."

Someone's on the show floor with Duncan;  
Someone's on the floor I know-ow-ow-ow.  
Someone's on the show floor with Duncan,  
Putting up exhibits in frames.

And singing, "Show time is almost here,  
Hustle your buns, let's go-o-o-o!  
There's more work that need to be done,  
Putting up exhibits in frames."

[Continue, substituting names and jobs.]

Someone's on the show floor with  
Karen...setting up the coffee pot...  
Someone's on the show floor with

Ada...signing in exhibitors...  
Someone's on the show floor with  
Erma...putting up signs on the wall...  
Someone's on the show floor with  
Gretchen...opening exhibit boxes...  
Someone's on the show floor with  
Carl...fitting plexie in the frames...  
Someone's on the show floor with Flo-  
rence...helping out everywhere...  
Etc.

(Ed's note:)

As you can see it takes a lot of people to put  
on a stamp show like ROPEX. If you haven't  
already volunteered to work on a committee  
won't you please do so now!. It's lots of  
work but also fun, too.

### **SNIPPETS BY LES WINICK**

Did you know that George Washington has its  
own Zip Code - 98824? That's for the town of  
George, in the state of Washington.

## **It's OK to be a Generalist!**

by Tom Fortunato

Chairman, APS Chapter Activities Committee  
(from the May 1995 issue of the Baltimore Philatelist)  
stampmf@frontiernet.net

I'm responding to an article by Reverend Edward Mallowney in the last issue of the Baltimore Philatelist (March, 1995). His basic premise is that this is the age of specialization, whether it be inside or outside the world of philately. I do agree with many of his points. In fact, I doubt there is a stamp collector out there who does not specialize in some facet of our great hobby, including me!

However, sweeping aside the general collector as an "endangered species" is an inaccurate view point. I am president of the International Society of Worldwide Stamp Collectors, some thousand members strong residing in over 45 countries around the glob. Our members believe that world

*(Continued on page 4)*



*(Continued from page 3)*

## It's OK to be a Generalist!

wide collecting is a worthwhile pursuit and deserves recognition from organized philately.

Just because we worldwide collectors haven't been vocal about our interests doesn't mean that we are facing extinction. In fact, I dare say that there are more worldwide collections in the closets of "specialists" than you might think! The typical scenario probably hits close to home.

How many of you started off collecting U.S. stamps as youngsters? After a while, you probably became bored filling up all the spaces in your beginner's album with the common stamps and needed a new challenge. Perhaps a postcard from a vacationing relative with an unusual foreign stamp on it started you on the road to a worldwide collection. If you were very lucky, a relative helped you along or there was a neighborhood or school club keeping the "fire" alive. The process of growing up often meant that time for hobbies was minimal at best. How many times has the fire been rekindled by rediscovering that long forgotten collection years or decades later?

A generalist has many advantages over those who specialize. Worldwide collecting provides a rock-solid foundation for what used to be called social studies. It teaches foreign languages, culture, geography, and history, broadening one's perspectives from "me" to "we" in a truly global sense. From a philatelic angle, it provides the very stepping stone of knowledge to specialize. After all, how many collectors know exactly what they want to collect from the get-go?

After years of neglect and ridicule, worldwide collecting is finally gaining the respect it deserves. Supply companies and dealers are recognizing the potential we offer. Scott's has recently issued its first Classics Catalogue, catering to those who prefer the first hundred years. Two new album makers have just published works for the classic and modern issue collectors alike. Dealers love worldwidiers like me, as we always have something to buy... and unlike specialists, can stay within a budget. No one is forcing us to buy all those expensive stamps. We buy what we want and leave empty spaces whenever we have to without feeling guilty about it.

Finally, think of all stamp collectors as attendees at a great sit down dinner. We all have a seat at the table, but the specialist can never get past the first course. Worldwidiers get a chance to sample a little of everything from soup to nuts, and can always go back for seconds without getting full!

If you'd like to learn more about the smorgasbord the ISWSC offers, write to me for an application. Please include a self-addressed stamped envelope. Write ISWSC, 42 Maynard Street, Rochester NY 14615-2022 and don't forget to mention the Baltimore Philatelist.

And a P.S. from the Editor (Joe Foley): I'm a general collector myself and a member of the ISWSC. The organization has an unusual provision in their dues structure: members are also asked to donate 250 different collectible, undamaged stamps per membership year for the ISWSC Youth Program. This is one group that is really doing something about the future of our hobby!

## HISTORY OF DOMESTIC RATES FOR LETTERS AND POSTCARDS

Prior to the middle of the 19th century, rates were based on the number of sheets in a letter and the distance it was traveling. In 1845 rates were based on the weight of a letter and the distance it was going. Beginning in 1863, domestic letter rates became "uniform," that is, they were based solely on weight, regardless of distance.

Postage listed in cents.

Effective Date	LETTERS	
	Per 1/2 ounce	Per ounce
March 3, 1863	3	
March 3, 1883	2	
		Per ounce
July 1, 1885		2
Nov. 3, 1917		3
July 1, 1919		2
July 6, 1932		3
Aug. 1, 1958		4
Jan. 7, 1963		5
Jan. 7, 1968		6
May 16, 1971		8
Mar. 2, 1974		10
	First Ounce	Each Additional Ounce
Sept. 14, 1975	10	9
Dec. 31, 1975	13	11
May 29, 1978	15	13
Mar. 22, 1981	18	17
Nov. 1, 1981	20	17
Feb. 17, 1985	22	17
Apr. 3, 1988	25	20
Feb. 3, 1991	29	23
Jan. 1, 1995	32	23



*You're the One we deliver for...*

*Public Open House  
Rochester Post Office*

*September 13, 1998*

*You're the One Station  
Rochester, NY 14692*

Just a couple of local special cancels available up to 30 days after the dates shown on the samples. They should be available at the GMF on Jefferson Road, Rochester, N.Y. 14692

## Warren Stevens Award

Don Schurr was presented with the club's Warren Stevens award this year. This award is given at the discretion of the board to a member who has made significant contribution to RPA.

Don has served as club secretary for three years, took charge of the youth area at ROPEX for two years and has helped out on numerous projects, including the club's involvement with youth and stamps at the Strong Museum.

# RS STAMP SHOW

SATURDAY, SEPTEMBER 12, 1998  
AND  
SUNDAY, SEPTEMBER 13, 1998

Red Men's Party House  
1001 Lexington Avenue  
(Cor. Mt. Read Blvd.)  
Rochester, N.Y. 14606

Fast on Lexington, cross Mt. Read,  
Drom 390 N., exit Lexington Ave.,  
Eriveway is on right. Entranance at front  
entrance of bldg., banquet entrance,

Sat. 10AM - 5PM  
Sun. 10AM - 4PM

DOOR PRIZES

FREE PARKING  
FOOD SERVICE

# THE PREZ'S CORNER

Welcome Back!

Well, it's that time again- time for another stamp season, and what a season we have in store for you!

Elsewhere in this issue you'll find the tentative schedule of meetings and events for the season. Our new VP, Ed Kawasaki, has done a splendid job of balancing live and pre-recorded presentations for our enjoyment. First up will be our annual "what-happened this summer" welcome back. Feel free to bring items for "show and tell," as we expect everyone to participate!

Our first special event is scheduled for October 3. Stamp Collecting Month will start off with a bang as we set up shop at Marketplace Mall between 10-5. We'll have table displays and exhibits introducing the public to our hobby. This year company will join us, as the mall will also be running its semi-annual Antique Show. It's a natural "fit" for these two interests to mingle. The crowd will definitely be interested in what we have to offer! Yes, the US Postal Service will bring with the latest stamps, including the space fantasy issue. They'll also have a special pictorial postmark for handback service. More info will be provided as the date nears.

As the saying goes, "It ain't over until the fat lady sings.!" Will you be the "Honored Member of the Evening?" Have you been dying to gavel an RPA meeting to an official close? You may get that opportunity this season. After most meetings, we also have a silent auction. That last function really brings the night to a close. The honored member will be the official time-keeper and gaveler, and his or her hammer has the final word!

Bring us your glassined, your boxed, your huddled masses of philatelic stuff! We appreciate the generosity of the many members who donate items for door prize give-a-ways. If you have material which would be appreciated by your fellow meeting-goers, we'll be happy to include it in that evening's offerings! (Ed's note: up to 7 lots per member may be put on the auction table).

Is there interest in reviving the one-page exhibit competition? We'll poll meeting attendees and see if it will fly this season.

Lastly, COME JOIN THE FUN! Try to attend each and every meeting this year!

Best wishes,  
Tom Fortunato

Our US post office tried camels for mail delivery during the Civil War. They did not work out because the animals stampeded when they came into contact with horses or mules and bit their drivers. Today, letter carriers only have dog bites to worry about. SNIPPETS BY LES WINICK

# RPA Schedule 1998-99

- Sept 10 "What I Did, Philatelically-Speaking, Last Summer"
- Sept 24 APS Slide Show "In Violation of the Rules"
- Oct 8 Bert Kiener "Israel"
- Oct 22 APS Slide Show "More in Violation of the Rules"
- Nov 12 Rick Kase "Scales"
- Dec 10 Paul Gerwitz and George Hill, "ACE Covers" and Bring-A-Gift-Take-A-Gift
- Jan 14 Auction - Live  
[No silent auction this night]
- Jan 28 John Kellas "Philatelic Computing" at Brighton High School [No silent auction]
- Feb 11 Bert Kiener "Ryukyu Islands"
- Feb 25 APS Slide Show "Stamp Collecting, Your Key to the World"
- Mar 11 "Every Member a Dealer" Night
- Mar 25 APS Side Show "Pennsylvania Post Office Murals of the 1930s and '40s"
- Apr 8 Quiz Night
- Apr 22 APS Slide Show "Tonga Tin Can Mail."
- May 13 Open
- May 27 APS Slide Show "International Organizations on Stamps."
- Jun 10 Open
- Jun 24 Business Meeting

## Rochester Philatelic Assn. Inc. Income Statement June 30, 1998

Revenue:	
Frame Fund	\$ 478
RPA Operating Fund	<u>2,671</u>
ROPEX'98	18,167
Total Revenue	\$21,316
Expenses:	
Frame Fund	496
RPA Operating Fund	<u>2,624</u>
ROPEX'98	15,849
Total Expenses	\$18,969
Gross Profit	\$2,347

# SHOWS

Several stamp shows coming up invite your attendance:

**Sept. 4-6 - BALPEX**, at Marriott Hunt Valley Inn, north of Baltimore, MD. Presented by the Baltimore Philatelic Society (admission is charged).

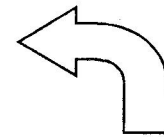
**Sept. 12-13 - R&S Stamp Show** at the Redmen's Club on 1001 Lexington Ave., corner Mt. Read Blvd. Sat. -10 to 5, Sun. 10 to 4. Presented by club members Bob Steeb and Elli Phelps. Free admission.

**Sept. 27 - R&S Stamp Show** at Knights of St. John, 2379 Union Rd., Cheektowaga, NY. Hours 10:30 to 2 p.m.

**Oct. 16 - 17 - STEPEX** at Arnot Mall, Horseheads, NY. Route 17 - Exit 51. Hours: Friday 10 am to 9:30pm, Saturday 10am to 9pm. Show cover and cancel. USPS booth.

## Rochester Philatelic Assn. Inc. Statement of Financial Position June 30, 1998

	1998	1997
Certificates of Deposit	\$12,000	\$10,000
Savings Account	3,892	6,027
Checking Account	6,056	3,870
<b>Total in Accounts</b>	<b>21,948</b>	<b>19,897</b>
4. Withdrawals		( 822 )
<b>Restricted Deposits:</b>		
Dues	( 575 )	( 120 )
Dealer Deposits	( 400 )	( 275 )
<b>Adjusted Total</b>	<b>20,973</b>	<b>18,680</b>
Add Noncash Contribution	93	
3. Due to ROPEX from savings	( 40 )	
<b>Total</b>	<b>21,026</b>	
1. Gain or Loss	2,346	



## NOTES

1. The ROPEX'97 fund had a profit of \$107. The \$107 was transferred to RPA (\$34) and Frame Fund (\$73).

2. One dollar error is due to rounding.

3. \$40 was spent on lighting (casters) and has not been reimbursed.

4. \$822 was withdrawn from savings to reimburse ROPEX for lighting, and is recorded

## In Memoriam

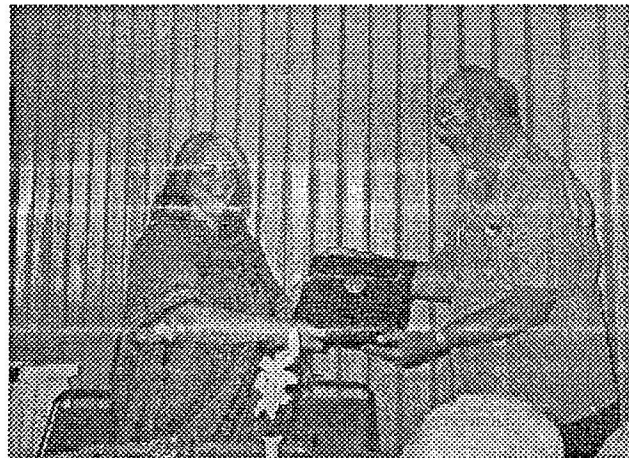
We regret to report four deaths over the summer:

Former member **Dottie Scheer** died July 5 after a long illness. Member **Michael Paul** died July 5 after a fight with cancer. He joined RPA in November 1997.

**Wayne Wickland**, a member of RPA from 1994 to 1997, died July 29. He was a Navy veteran, and a retiree from Gannett newspapers. As a stamp collector, he was interested in world-wide stamps and first daycovers.

We were informed of the death of life member **Werner J. Baum** in 1996.

Our sympathies are extended to all their families.

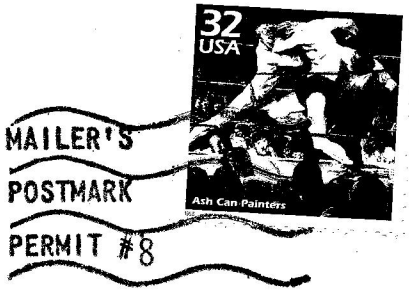


Andy Hale Award for Philatelic Excellence -  
Best General Exhibit by an RPA Member

Ada Prill accepts the award for Bill Bauer from Andy Hale.  
The award was earned by Bill Bauer at the 1998 ROPEX Show.

**HINGES & TONGS**  
ROCHESTER PHILATELIC ASSOCIATION, INC  
P.O. Box 10206, BRIGHTON STATION,  
ROCHESTER, NEW YORK 14610-0206

Articles may be submitted to:  
Joseph K. Doles  
H&T Editor  
105 Lawson Road  
Rochester NY 14616-1444



**FIRST CLASS MAIL**

9205  
THOMAS M FORTUNATO  
42 MAYNARD STREET  
ROCHESTER NY 14615

