

The Rochester Philatelic Association, Inc
HINGES & TONGS

MEETINGS ARE HELD 2ND & 4TH THURSDAYS SEPT.-JUNE AT ST. PAULS' EPISCOPAL CHURCH

TRADING & TALKING 7PM FORMAL PROGRAM 8PM

September - October

editor
Joseph K. Doles

1996

"Torch Mail" Cover Could be Yours

Philatelic Society Night

The first meeting of the 1996-7 season will feature the many philatelic organizations our hobby has to offer. Which groups do you belong to? Here's your chance to discuss and promote your specialties. Bring along any brochures, newsletters, magazines and other publications RPA members might enjoy seeing, as well as applications. Perhaps you'll learn of a group you might be interested in joining, or find an RPA member with similar interests to you. By the way, bring along a one page exhibit on the subject of your choice!
See you September 12, 1996.

How would you like to own a piece of Olympic philatelic history and help the RPA as well? Tom Fortunato carried the Olympic torch in Rochester on June 12 on its 15,000 mile trek to Atlanta and the Centennial Games. He also carried five unique combo covers with him to commemorate the event. Each started with a canceled 1984 Olympic torch runner postal card, adding a new 32¢ Olympic stamp, and canceled at the "Greece Branch" Rochester post office. The reverse bears a sworn statement, properly notarized that day, describing run particulars. It's signed by him and his official torch escort. Read all about it in a featured

article in October's "American Philatelist."

None of the covers are for sale, but one is being given to the RPA as a fund raiser. To get this cover, simply be the person making the largest monetary donation to the RPA between September 1 and December 31. Remember that such donations are tax-deductible, as the RPA is a recognized 501(c)3 charitable organization. All proceeds will support RPA programs and services, with a portion going to the new frame fund. Send your contribution to our post office box address listed this issue, making checks payable to "RPA." Good luck! The winner will be announced in an upcoming Hinges & Tongs.

National Stamp Collecting Month Celebration

If you had fun at our first NSCM mall event last year, this one will be even better! Join us on Saturday, **October 26** at Eastview Mall's Center Court (near the Warner Brothers store) from 10 AM to 5 PM. Setup will start at 8:30 AM. We'll have exhibits, displays, games, kiloware and give-a-ways, all to promote our hobby. The USPS will be there with the latest philatelic items and a pictorial postmark designed by Joe Doles. We need you to make this event a success. Plan to spend an hour or two (or more!) of your time for the betterment of stamp collecting and the RPA. We recruited many new members from the celebration last year. You'll be called soon to sign up for specific times and assignments, or do so during our two October meetings.

*90 Years and Still Going!

In November of this year - 1996 - the 90th U.S. Christmas Seal will be issued. In recognition of this event, the local American Lung Association office is presenting a one-day commemorative cancel. According to Ellen Scalzo, Director of Development for the Finger Lakes ALA, the U.S. Postal Service has agreed to develop this cancel and will present it at Marketplace Mall on Saturday, November 23.

At the same time, the local winner of the 1996 Christmas Seal Coloring Contest will be announced and contest entries will be displayed. The ALA Teddy Bear will be on hand with candy canes for attendees, and a raffle is also planned. The new 1996 Christmas Seals will also be available.

The Lung Association will hold a similar event at Arnot Mall in Horseheads on Friday, November 22.

The public is welcome, and Ellen has issued a special invitation to our group - and all stamp and seal collectors.

Watch your next *Hinges and Tongs* for further details.

RS Stamp Show

Radisson Inn-Rochester Airport
175 Jefferson Rd. Rochester
November 9 & 10
Sat. 10-6, Sun. 10-5

WHAT GOES AROUND, COMES AROUND

I grew up in the days when three-cent stamps carried letters and trains carried people. We had no car, so the few trips to distant relatives that did occur were relished and remembered.

Such was a visit to Rhode Island (Mother's home state) to see Aunt Pauline and "Doctor" Bill Hughes at their spacious home on Keene Street in Providence. Of all our "relations" these two qualified as our rich relatives. But they were gracious and sincere, did not flaunt their wealth, but rather showed us, almost apologetically, pictures from their many world cruises.

A generation later, now with a husband and five children, I took another visit to their home where I found the pair - older and less-travelled now - to be as genuine as ever.

Another generation later: Dr. Hughes and Pauline, now living only in my memory, came to greet me - of all places - at ROPEX-96!

My fingers were doing the walking through a box of covers, all with particular postal markings. I wasn't really looking very hard until a club member at the same table remarked, "Oh, look that cover went through quarantine. Isn't that part of your TB interest?"

Indeed it had been "Sent to Quarantine," but what caught my eye was the addressee: "Mrs. William N. Hughes." (Ever since I started flipping through covers at stamp shows, I had often mused,

"What if I ever find someone I know?")

Was this really Aunt Pauline? I turned the envelope over. The return address was "68 Keene St., Providence Rhode Island." The same name, the same address!

To add to the interest -- the letter was addressed to her at "Pier 54, North River, New York, N.Y." Alongside the address was written further instructions to the postal people: "S.S. Britannia, Cunard Line, Arriving N.Y., March 17th." The letter had been cancelled on Mar. 15, 1939, Providence R.I.

It appeared that Dr. Bill at home in Providence, had written to his wife, obviously returning from a cruise, and expected in on March 17. The letter made it to the pier -- a backstamp by the Cunard White Star Mail Dept. noted it was received at North River Piers March 16, a.m.

But why the quarantine? Was there some raging disease infecting Providence Rhode Island in March of 1935? Or was there sickness at the piers, or on the ship?

Tune in next time, after we dig into history and try to learn some answers to this little mystery.

In the meantime, "what went around, came around." Has it ever happened to anyone else?

by Florence Wri

Meeting Programs

We still have openings for upcoming RPA programs. Is there a topic you'd like to learn more about, or perhaps lead a brief discussion of a specialty of yours? Contact the program coordinator Tom Fortunato in person or by phone at 621-1670.

E-Mail Anyone?

For those of you on "The Net," we'd like to give you the opportunity to contact other RPA members using E-mail. An upcoming issue of *Hinges & Tongs* will list these for the benefit of all. Simply contact Paul Gerwitz' computer address at the following and leave your e-mail address:
snorttrk@vivanet.com

Meters

An area of pure philatelic research is one that has been much neglected in the past but which is rapidly becoming more popular. This is the field of metered mail.

Several recent stamp exhibitions have included meter exhibits and these have won awards.

Much of this material can be found on everyday mail and the vast majority of it is thrown away as being of no philatelic importance. Nothing could be further from the truth.

Like it or not, much of the postal history of the future will revolve around the use of metered mail. The smart collector is the one who realizes this before the trend fully develops, and who gathers material while it is easily available

Plan to Exhibit this Year!

Whether you're a novice or well-seasoned exhibitor, there are many options to display your philatelic material and knowledge this year. One page exhibits are back, being held the first meeting of most months. Check the 1996-7 schedule for details. We're looking for one frame exhibits to display at our Eastview Mall event on October 26. Five frames (ten sides) need to be filled, preferably with material not shown last year. Contact Tom Fortunato to reserve one. The ROPEX one frame competition will be held January 23. Consider exhibiting at ROPEX. See Ada Prill to reserve frames by December, and don't wait until the last minute! There are two options this year. National competition frames are \$8 each, same as before. You may also sign up for the special "RPA Members Only" exhibit category, at \$5 per frame. Anything goes here- no rules- and these frames will be judged separately on their own merits. Finally, "Exhibiting Basics" is the topic for the March 13 meeting, allowing everyone to have hands-on experience.

MEMBERSHIP CORNER

Many thanks to all those members who paid their 1996-97 R.P.A. dues by July first.

Thanks to all members who responded to a little memory nudge in the form of postcards (dues reminders) mailed in July. To date there are only 28 members who have not renewed membership for 1996-97. Hope to hear from all of you very soon.

Please stay with us -- we need all of you, and try to come to as many meetings as possible. But if you can't come, stay in touch by receiving the *Hinges and Tongs*, which will keep coming as long as your dues are paid.

Florence H. Wright
Membership Chair.

IT'S TIME FOR TOPICALS

Our club - Rochester Philatelic Association - is Chapter #84 of the American Topical Association. As such each and every RPA member can take advantage of the ATA benefits.

Topical Time is a bi-monthly magazine with interesting articles on topical collecting, news and letters. There are copies in the RPA library, and all members may borrow these (be sure to bring them back!)

RPA members "seen" in recent issues of TT include:

Tom Fortunato - in the May-June issue is a letter from him which asks: "Does anyone out there know of a postage stamp that depicts a toilet?" This has to do, of course with Tom's exhibit on Ceramics. Editor's title to the letter is "Where is the 'W.C.'?"

Tom's name appears again in the May-June and also the July- Aug. issues as having recruited new members to ATA.

Norm Wright - also listed as an ATA recruiter. On the inside of the front cover/wrapper of the July-Aug. *Topical Time*, the names of Norm Wright and **Florence Wright** appear in small print on the picture of the new *Railways of the World* Ata Handbook 130. They assisted the late Howard Burkhalter with editing, and formatting pages for publication.

Elli Phelps - found in the new members listing; even though all RPA members are a part of ATA, anyone may join on their own.

While you are browsing through the *Topical Time*, be sure to look at the ATA Checklist by Joan Bleakley (page 84 of Jul.-Aug.) For a very small cost you might obtain a list of stamps in your topical interest, anything from Airships to X-Ray.

Or if "surfing the net" is your thing, look at page 68, where George Griffenhagen reviews various links on the Internet (World Wide Web) that relate to topical philately.

The articles, all well illustrated, are written by other topical collectors and provide something for everyone. Are you "into" geology or evolution? Read "The Primate Tree" in May-June. Art? Page 33 reveals all about Caravaggio, Italian painter. Teddy bears? Look over "Teddy Bear Philately" on page 28.

The most recent issue takes you through the TOPEX-95 grand award exhibit on Martin Luther. This is an excellent discourse on exhibiting, as well as the life of the German Christian church reformer.

How about Firearms on stamps? Stephen Jacobs writes on "Paper Firearms" on page 33.

These, and many more articles, both interesting and informative, are just waiting for you to pick up and read.

Minnesota Stamp Expo

Three local Twin Cities stamp clubs and the Minnesota Association of Stamp Dealers are sponsoring that state's largest stamp show Nov. 30 and Dec. 1, 1996 in the Minneapolis, Minn. Convention Center.

Any members of RPA are invited to not only attend the event, but to exhibit. Theme of the show is Christmas, so Christmas-related exhibits especially will be welcomed. There are frames available for 2560 pages of exhibits.

June Berwald, president of the Minnesota Federation of Stamp Clubs, reports: "The Twin Cities are a great place to visit, even in the winter. We have a nightly 'Holidazzle Parade' through downtown Minneapolis (outdoors!), the Swedish Institute is decorated, Dayton's Department Store always is outfitted for the holiday, and don't forget the Mall of America, the ultimate place for your Christmas shopping.

Yes, the weather may be cold and we may have snow, but the cities quickly plow the streets - and we have walkways all through downtown Minneapolis so one never needs to go outdoors to get around."

If you are interested in a Prospectus, see Florence Wright.

POSTMARK: Athens, Georgia

The front of the card showed two collie dogs. Inside, the message read: "We are **dog-tired** after OLYMPHLEX but are very pleased overall with the show. Best wishes to all in Rochester Phil. Association."from member Nancy Z. Clark.

[We've asked Nancy, when she is rested up, to give us a review of the show; watch your H & T for further news on Olympflex]

The Rochester Philatelic Association, Inc.

1996-97 Meeting & Events Schedule

Meetings are held Thursdays at St. Paul's Episcopal Church, the corner of East Avenue & Vick Park B

Buy/Sell/Trade 7-8 PM. Meetings begin promptly at 8 PM.
Silent auctions as noted (*).

September 12- Welcome Back & Philatelic Society Night*
one page exhibit competition- any subject

September 26- APS Slide Presentation* "The Pan American Exposition"

October 10- Auction
Najjar Estate Live Auction
one page exhibit competition- "Western New York"

October 24- APS Slide Presentation*
"Alaska and the Mails"

Sat., October 26- National Stamp Collecting Month Celebration
Eastview Mall, 10 AM-5 PM, Center Court, new wing near Warner Brothers

November 14- Program to be determined*
one page exhibit competition- any subject

November 28- No Meeting (Thanksgiving)

December 12- Program to be determined*
one page exhibit competition- "The Holiday Season"

December 26- No Meeting (Christmas)

January 9- Ray Stone Quiz*
one page exhibit competition- any subject

January 23- APS Slide Presentation*
"The Tale of the Kicking Mule Cancel"
ROPEX one frame competition- any subject

February 13- Najjar Estate Live Auction
one page exhibit competition- "Wintertime"

February 27- ROPEX Preparation Night & Slide Presentation*

March 6 ROPEX SET-UP
Join a committee and share in the fun, see Ray Stone

March 7-9 ROPEX '97, Diplomat Banquet Center,, Fri. 10-8, Sat. 10-6, Sun. 10-4

March 13- Exhibiting Basics by Tom Fortunato*
one page exhibit competition- any subject

March 27- APS Slide Show*
"The Black Jack"

April 10- Program to be determined*
one page exhibit competition- "My Favorite Cover"

April ?- Red Wing baseball opener at Frontier Field (details to follow)

April 24- No Meeting (Church Unavailable)

May 8- Everyone-A-Dealer Night / possible Live Auction
one page exhibit competition- any subject

May 22- APS Slide Show*
"A Placid Winter: The 1932 Winter Olympics on First Day Covers"

June 12- RPA Annual Business Meeting*

June 26- Strawberry Party and All-Auction

NOTE: Silent auction bid sheets are available at the front table during each meeting. A limit of 8 lots per member is allowed. It is recommended that realistic starting bids be used. Many items are available from reputable dealers at 40-60% of catalog. It is a good idea to have these prepared before the meeting. A sample bid sheet is printed on the last page for your convenience

ROCHESTER PHILATELIC ASSOCIATION, N, Inc.
SILENT AUCTION SHEET

OWNERS NAME:

DESCRIPTION:

CATALOG VALUE:

MINIMUM BID:

BIDDER'S NAME

BID

BIDDER'S NAME

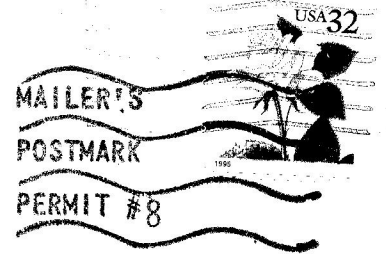
BID

HINGES & TONGS

A PUBLICATION OF

The Rochester Philatelic Association, Inc.

PO Box 10206 Brighton Station
Rochester, N.Y. 14610-0206



FIRST CLASS MAIL

All articles and comments
can be sent to the editor:

Joseph K. Doles
34 Carlisle Street
Rochester, NY 14615-2043

9205
THOMAS M FORTUNATO
42 MAYNARD STREET
ROCHESTER NY 14615

