

HINGES and TONGS

an RPA newsletter

Rochester Philatelic Association, Inc.
FOUNDED 1913 Sept/Oct 1991

Meetings held the second and fourth Thursdays, Sept. through June, at St. Pauls' Episcopal Church, East Ave. at Vick Park B. Starts at 8pm.

EXHIBITING SEMINARS

Larry Moriarty will kick-off this seasons programs with a series of seminars for anyone interested in exhibiting or just interested in ways to display their philatelic holdings. The talks will begin at 7:00pm and last about 45 minutes. The seminars will be held before our regular meetings in the library section of the church hall. This area can be closed off from the rest of the room. The main meeting area will still be available for the silent auction and the normal before meeting doings. A list of the next four seminars follows:

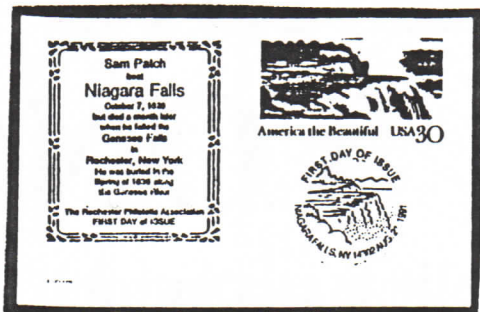
<u>DATE</u>	<u>SUBJECT</u>	<u>SPEAKER</u>
Sept. 12	Introduction, Questions, Needs	Larry Moriarty
Sept. 26	How to Start an Exhibit	Bernice Watson
Oct. 10	What is Needed on the Title Page	Ray Stone
Oct. 24	Outline	Ann Triggler

PROGRAMS

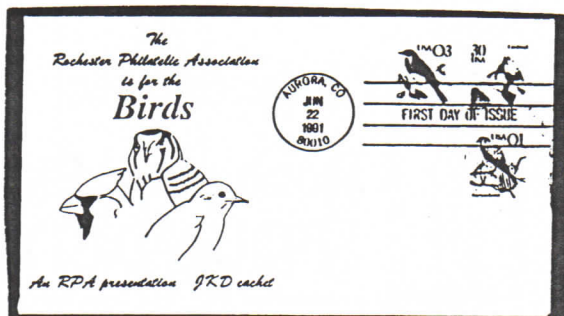
- Sept. 12 **SHOW & TELL** What Have you been doing this summer?
What are your collecting interests?
Bring your favorite philatelic item to show & tell.
Bring donations for future door prizes.
Silent Auction.
- Sept. 26 **SLIDE SHOW** First Day Cover Collecting, A Primer C. Patterson
Discussion will follow the slide show.
Silent Auction.
- Oct. 10 **LIVE AUCTION** Bring your five lots for the auction
10% from the seller goes to the Club Treasury.
- Oct. 24 **SLIDE SHOW** The 6.3¢ Story by Les Lebo. An APS slide program.

SUMMER CACHETS FROM THE FRAME FUND

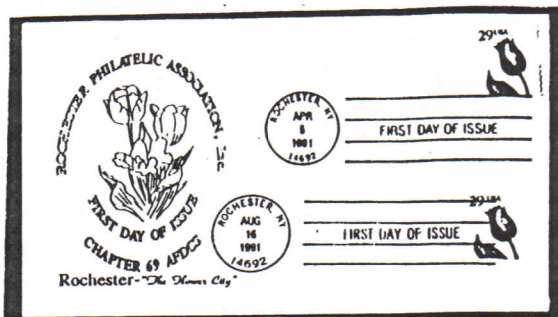
This has been a busy summer for the frame fund. Below is some of the issues that we made first day covers for. If you are interested in purchasing any items please send your check with a SASE to RPA Cachet Sales, PO Box 10206, Brighton Station, Rochester, N.Y. 14610-0206.



Niagara Falls postal card (blue cancel) \$1.50

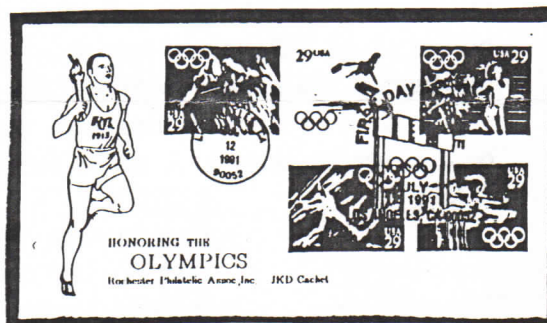


Birds (3 diff. stamps) \$1.75

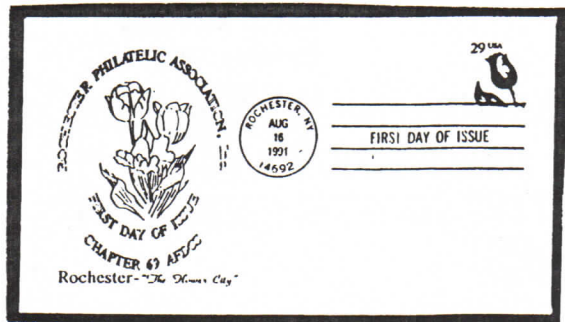


Flower coil stamp issued Aug 16th dual cancel with April 5 issue \$3.00

Olympics singles \$1.75 strip, of 5 \$3.50

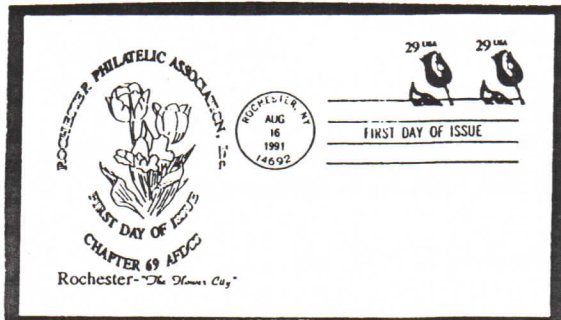


Flower coil FDOI (Chapter 69) 2 color cachet
Rose cachet \$2.00



Flower coil singles \$1.50

Flower coil pairs \$2.00



ROCHESTER PHILATELIC ASSOCIATION, Inc.
TREASURER'S REPORT
 July 1, 1990 - June 30, 1991

INCOME

MEMBERSHIP DUES (PREPAID)	\$ 215.00
MEMBERSHIP DUES	500.00
INTEREST/CHECKING	340.50
INTERST/CD* <small>see footnote #1</small>	236.34
DONATIONS	80.00
AUCTIONS	82.90
REFRESHMENTS	25.21
TRANSFER FROM ROPEX-91 TO GENERAL FUND	2,759.33
BANQUET MONEY	438.00
ROPEX-91 <small>see footnote #2</small>	1,219.55
REFUNDS	25.00
EXHIBITION FRAME FUND <small>see footnote #3</small>	
CAGNET COVERS	\$4,177.96
AUCTION	46.00
SALE OF "A" FRAME	75.00
FRAME RENTAL	1,450.00
MISC.	91.00
AWARDS & PRIZES <small>see footnote #4</small>	5,839.96
	<u>+ 82.00</u>
TOTAL	\$ 11,843.79

DISBURSMENTS

COPIER SERVICE CONTRACT 1991-1992	\$ 290.85
OFFICE SUPPLIES	201.62
RPA STATIONERY	\$130.62
COPIES NAD OTHER POSTAGE	81.73
HINGES AND TONGS (POSTAGE)	209.03
AWARDS AND PRIZES	39.83
RENT - MEETING ROOM <small>see footnote #5</small>	595.00
RENT - POST OFFICE BOX	28.00
INSURANCE <small>see footnote #6</small>	312.00
SUNSHINE FUND OR MEMORIALS	34.73
LIBRARY BOOKS	140.80
PROGRAMS FOR MEETINGS	72.83

REFRESHMENTS

ROPEX-92 <small>see footnote #2</small>	72.10
DUES OTHER CLUBS OR PUBLICATIONS	1,227.73
TELEPHONE CALLS	95.00
BANQUET	16.02
REPRESENTATIVE FEES TO FEDERATION MEETINGS	432.80
ARS CIRCUITS - POSTAGE & INSURANCE	47.92
REFUNDS - OVERPAYMENTS	53.80
REFUNDS - OVERPAYMENTS	27.71
EXHIBITION FRAME FUND EXPENSES <small>see footnote #3</small>	
postage to service FDC's	2,402.75
FDC's production costs	999.53
service fees to U.S.P.S.	210.55
frame modifications	3,195.14
frame storage <small>see footnote #7</small>	225.00
frame insurance	500.00
misc.	131.69
TOTAL	\$ 7,664.66

FINANCIAL STATUS 6-30-90

\$13,890.68	Total 6-30-90
- 242.77	Transfers
13,647.91	Total 8-31-90
+11,843.79	Total income 1990-1991 year
25,491.70	Total before expenses
-11,644.16	Total expenses 1990-1991
\$13,847.54	Total 6-30-91

FINANCIAL STATUS 6-30-91

Cash on hand	\$ 287.35
RPA checkbook balance	6,500.68
ROPEX checkbook balance <small>see footnote #2</small>	1,219.55
Exhibit frame fund <small>see footnote #3</small>	5,839.96
TOTAL	\$13,847.54

LIABILITIES -0-

FOOTNOTES

- #1 Certificate of Deposit covered only 242 days of RPA calendar year. Upon maturing, monies were used for final payment on new frames. It will become part of the income picture again for a full year.
- #2 All monies left in the ROPEX checking account, with the exception of \$1000 to eliminate bank charges. The Board decided that the amount left in the account after all bills were paid should be indicated as income or as seed money under disbursements for the next ROPEX.
- #3 Monies in this fund are separate from the Annual ROPEX Fund. Monies in this fund are used to fund any credit cover projects to support upsets and any expenses associated with the new frames. Credit sales are the primary source for monies in the fund.
- #4 ROPEX committee voted to reimburse the RPA for the "RPA Awards" used at the show.
- #5 Meeting room at the church was \$35 a night for 17 nights = \$595.00
- #6 This covers only the RPA liability and compensation insurance. Frame insurance is a separate policy under frame fund.
- #7 This figure is for only four months of storage.

TREASURER'S REPORT ROPEX-91

INCOME

Interest / Checking Account

\$ 200.38

Dealer's Bourse

10,550.00

Exhibits

1,901.38

includes return postage 273.16

Sales

3,336.29

includes hospitality table, T-shirts
and mails sales of cards and covers

Advertising in program

710.00

Banquet

892.50

Refunds and Donations

242.49

net income total
starting balance
total

\$ 17,833.04
1,227.73
19,060.77

Exhibits:

ROPEX ribbons, etc. 272.44
Return Postage 273.16
Prospectus & Postage 175.00
Packing materials &
miscellaneous postage 37.42

758.02

Dealer's Bourse:

Second Hand Sales Permit 50.00
Postage, Contracts, Badges 65.88

115.88

Sales:

Express Press
Cachets (2 printings) 881.54
Souvenir Cards 657.80
Postage on sales items
Mailing supplies & postage 23.37

1,562.71

Judges and Supplies:

5 Judges @ \$200. = 1000.00
some monies turned back for use in other area of expense

889.32

Hotel:

Holiday Inn main ballroom, hospitality suite, 3 meeting rooms,
misc. equipment

4,621.20

EXPENSES

PUBLICITY - ADVERTISING

Gannett Rochester Newspapers

Display ads

1,273.37

Classified ad

40.00

Linn's Stamp News

Calendar

100.00

Display Ads

876.00

Stamp Insider

5 months full page ad

230.00

Stamps

Display Ads

199.50

Catholic Courier

Display Ads

77.46

Golden Times Publication

Display Ads

35.96

Gates - Chile News

Display Ads

39.67

News Releases to Philatelic Press

Post Card Mailing

59.01

Suburban News

Classified Ad Listing

161.99

EMPEX-90 Program Ad

Miscellaneous

8.00

110.00

38.55

3,249.51

TOTAL

Bookkeeping, Office Supplies,
other Postage

Stationary 108.00

132.29

Awards:

Refreshments:
Hospitality Suite 270.30
Bourse coffee & donuts 297.25

266.85

Telephone Calls:

Staging:
Paid help 70.00
Truck rental & gas 221.27
Misc. supplies 67.32

567.55
76.94

First Day Program

Show program expenses anonymous donation

0.00

Security 80 hours

Banquet

695.00

Miscellaneous:

Letters, copies, refunds, charges, etc.
Bank Service charges 24.00
Refunds 528.10
Letters, copies, name badges, misc. equipment, T-shirts,
dues etc. 231.60

969.89

Total Expenses

\$15,081.89

Monies to RPA operation

2,759.33

Checking account totals

1,219.55

Total all additional disbursements

19,060.77

Report on STaMpsHOW '91
by Ada Prill

In late August I attended my first STaMpsHOW. The strange mixture of capital and small letters is meant to call attention to the small letters "aps" - this is the annual show put on (at a different location each August) by the American Philatelic Society. This year's show was in Philadelphia.

If you have never attended a large show, you might have found this one a bit overwhelming. There were 125 dealers - ROPEX has 34! And there were 575 frames of exhibits, approximately equally divided between the "Champion of Champions" competition, where the winners of all the national shows of the previous year (including ours) compete against each other, and the first national-level show of the new year. (And I never get to see all 240 frames at ROPEX!)

I arrived a day early to help set up the exhibits, and I had the privilege of helping mount the exhibit which won the title of "Champion of Champions" for 1990-91 - Peer Lorentzen's "Denmark 1-10, 1851-1863." ROPEX's 1991 Grand Award winner, Thomas Corette's "1893 Two Cent Columbian Stamp," was there, as was ROPEX's 1990 winner, Edgar Marston's "Cayman Islands 1889-1936," this year representing SARAPEX. Michael Jolly, the ROPEX '89 winner, was there representing OKPEX with a German exhibit somewhat different from the one he had at ROPEX but incorporating many of the same pieces. Two other exhibits competing for the Champion of Champions had been in this year's ROPEX. So I felt we were well represented; if nothing else, it says something good about the quality of the exhibits we attract when they win Grands at other shows.

Saturday was meeting day for me - I went to meetings virtually non-stop from 10 am until after 5 pm. Among them was one on improving local stamp clubs, in which I learned that we are not alone in some of our problems (like getting publicity from the local papers), and that we are fortunate not to have many of the serious difficulties which plague many other clubs, such as sharply declining attendance. The meetings were much more successful than the Saturday evening banquet - lousy accoustics, slow service, inedible food - and \$25 a ticket! But it was nice to be there and see Mary Ann Owens, a friend of ROPEX, get the prestigious Luff Award.

I saw many people there whom I had met at ROPEX, and it was pleasant to hear the many good things people had to say about their visits to Rochester. We are now known as a friendly, helpful show, and people want to come back - I gave many of them exhibit applications. Just for the record, I found the people in Philadelphia very pleasant and helpful, too - I highly recommend going to any of their shows.

RPA was well represented at the show. Ann Maureen Triggles was one of the judges. Gordon Morison opened the show and gave a seminar. John Cali and John Babbitt were there, as were Norman and Florence Wright - ask Norm how his necktie got a gold medal in the Champion of Champions!

RPA PROGRAMS FOR 1991-1992

DATE	SHOW & TELL	What have you been doing this summer? What are your collecting interests? Bring donations for future door prizes.	Silent Auction
1991 SEP. 12			
SEP. 26	SLIDE SHOW	First Day Cover Collecting, A Primer C. Patterson Discussion will follow slide show	Silent Auction
OCT. 10	LIVE AUCTION	Bring your five lots for the auction - 10% from the seller goes to the Club Treasury.	
OCT. 24	SLIDE SHOW	The 6.3 Story by Les Lebo	Silent Auction
NOV. 14	QUIZ KILOWARE	Ray Stone's SUPER Quiz - bring your extras	Silent Auction
NOV. 28	<u>NO MEETING</u>	<u>NO MEETING</u>	
DEC. 12	LIVE AUCTION	WARREN STEVENS' PHILATELIC ASSORTMENTS Larry Moriarty, auctioneer Bring a wrapped philatelic item under \$2.00 value for Christmas Grab Bag Swap - He Who Brings - Takes!	
DEC. 17	KODAK	An invite to the Kodak Stamp Clubs annual Christmas Party Kodak Park Building 28 in room 113 .KILOWARE	
DEC. 26	<u>NO MEETING</u>	<u>NO MEETING</u>	
1992 JAN. 9	BOB & ELLIE MERCHANDIZING & AUCTIONS	Talk and panel discussion on	SILENT AUCTION
JAN. 23	SLIDE SHOW LIVE AUCTION	Tuberculosis, ATA Slide Show (unconfirmed) John Kellas, auctioneer	
FEB. 13	SLIDE SHOW	UPSS-Cancellations Kiloware Night	SILENT AUCTION
FEB. 27	SLIDE SHOW	The APS Story	SILENT AUCTION
MAR. 12	ANNUAL ONE FRAME EXHIBIT COMPETITION	demonstration on handling frames for set-up One eight-page frame for competition; have another eight pages ready in case you win a frame at ROPEX.	SILENT AUCTION
MAR. 26	ROPEX	NO MEETING AT CHURCH Set up at Holiday Inn	
APR. 9	TALK	John Hotchner, AAPE ROPEX Critique	SILENT AUCTION
APR. 23	<u>TOUR OF G.M.F. WILL BE REQUESTED</u>		
MAY 14	TALK	Norm Wright on computerizing your inventory (flexible)	SILENT AUCTION
MAY 28	TALK	Ada Prill, slides of artwork on stamp borders (flexible)	SILENT AUCTION
JUN. 11	ANNUAL BUSINESS MEETING AND ELECTION OF OFFICERS		SILENT AUCTION
JUN. 25	KILOWARE AND STRAWBERRIES		SILENT AUCTION

Rochester Philatelic Association, Inc.
P.O. Box 10206, Brighton Station
Rochester, New York 14610-0206



FIRST CLASS MAIL

Typed articles may be submitted by
the 25th to the editor:
Joseph K. Doles
34 Carlisle Street
Rochester, New York 14615-2043

The RPA is a chapter member of the APS and the AFDCS