

# HINGES and TONGS

Rochester Philatelic Association, Inc.  
FOUNDED 1913 March/April 1991

## MEMBERSHIP DRIVE EDITION

An extra large edition of this newsletter has been printed and mailed to folks who requested more information on the RPA at ROPEX-90.

### THE ROCHESTER PHILATELIC ASSOCIATION, INC. HISTORY

The RPA was organized on March 12, 1913. The first meetings were held in the Hotel Rochester by eleven members. Later meetings were held at the Municipal Museum. During World War One, membership dwindled to five members and meetings were held in their homes. When membership again increased, meetings were held at a local stamp dealer's shop. The RPA then migrated to the Public Library, the Edgerton Park Museum, the Bausch Museum of Arts and Sciences, and in 1976 moved to St. Paul's Church on East Ave.

Over the 78 years of existence and about 1400 meetings, a wide variety of programs have been featured. These activities include speakers, movies, slide talks, exhibits, swap nights and auctions. Much knowledge on the hobby of stamp collecting is still available to the members through the extensive library kept by the RPA. Bus trips, picnics, and an annual dinner-auction are the activities of the RPA.

Early exhibitions of the RPA were local affairs, but during the 1930's and 40's, shows were held in conjunction with the Rochester Museum. In 1950, the RPA assisted in the formation of the Niagara Frontier Federation of Stamp Clubs. This group and the Central New York Federation of Stamp Clubs with the RPA put on exhibitions of international quality.

The year 1963 was the Golden Jubilee of the RPA. A show of over 700 frames was held in Rochester's new Midtown Plaza. This show paved the way for subsequent large exhibitions and bourses such as TOPEX-67 and APS-68. It was at APS-68 that the RPA inaugurated the World Series of Philately, now known as the Champion of Champions Show. The ROPEX title was initiated in 1971. The RPA has hosted such organizations as the American Philatelic Congress, the Society of Philatelic Americans, and the American Topical Association.

This background of the Rochester Philatelic Association provides appropriate credentials for the RPA to host

### ROPEX

THE ROCHESTER PHILATELIC ASSOCIATION MEETS EVERY SECOND AND FOURTH THURSDAY OF EACH MONTH EXCEPT JULY AND AUGUST. THE RPA IS PROUD SPONSOR OF "ROPEX", A CHAMPION OF CHAMPIONS NATIONAL STAMP SHOW.

## TAKE NOTE

Membership dues directive handed down by R.P.A. Board of Governors.

After considerable discussion within each year, for the last six years, the problem of membership dues in arrears has been finally solved. The board of governors has directed that all membership dues should be paid in the time period of 90 days from July 1st, and that the grace period of over 6 months to pay membership dues be stopped. It was found that this extended period of time, causes many members who would otherwise be dropped, to be kept on the membership mailing list, for a longer time, causing expenses to occur that the association should not have to pay out in increased mailing costs. With the US Postal rate going up again, it was felt that Association mailing costs should have to be cut down, and the board of governors thought that moneys would be paid into the Association sooner for covering these costs. Therefore, the board of governors has directed the membership chairman to do the following for the 1991-92 up-coming year: a renewal notice for membership dues be sent out to all members paying dues currently (life and honorary members are exempt from paying dues) on the mailing list of June 1991. This notice will be the only notice sent out, requesting payment of membership dues. Nothing received back, by the Association from a member, by September 28th 1991, is subject to dismissal from the Association, and his or her name dropped off the current mailing list. It was said, that this part of the R.P.A. Constitution will be then, enforced better.

James Trenton  
Membership Chairman

## STAMPS NEEDED

Each year at this time RPA members help put together packets of stamps to hand out to the youngsters who visit our ROPEX show. We need each of you to bring in some of your extras to donate for this worthwhile project. At the March 14th meeting we'll ask for volunteers to place approximately 100 stamps in past ROPEX show covers. We'll need about 250 of these packets. Please bring your stamp donations to the next meeting.

## VOLUNTEERS NEEDED

We need workers to help set up frames and place exhibits in them on Thursday April 4th. If you would like to volunteer let any club officer have your name. You will be given details at that time. Help will also be needed that Sunday evening after 5pm for the take-down.

## ROPEX BANQUET

Printed else-where in this newsletter is a form to be filled out by members interested in attending this years ROPEX banquet. As of 2/28 we have received two dozen reservations with payments. This is a great start and should prove to be one of the best banquets ever.

The RPA and ROPEX show have become well known in philatelic circles as being one of the friendliest club and events of the year. So help join in the fun and sign up now for the ROPEX-91 banquet.

## LIBRARY LOSSES

Scotts 1991 Vol 4 (P-Z) is missing. If anyone discovers this volumn in their holdings please return it to the club library. Library rules do not allow the borrowing of the most current set of Scott's. The 1990 set

is available to all active members to take home for two weeks at a time.

### MARCH/APRIL PROGRAMS

#### MARCH 14

Live auction and annual one frame competition.

**NO SILENT AUCTION THIS WEEK.**

Bring up to five lots and any number of donation lots are always appreciated. Remember that the auction is "CASH ONLY" and 10% from the seller goes to the RPA General Fund.

For those that would like to get their feet wet in the exhibition ring this is your chance to win a free 16 page frame at ROPEX-91. Bring 8 pages to this meeting and compete against other exhibiting members. The winner will need a 16 page exhibit to fill the frame. Good luck to you all.

#### MARCH 28

APS slide show #65, The Division of the Union, by Robert Davidson.

#### APRIL 5,6 & 7

ROPEX-91 Downtown Holiday Inn  
32 of the finest dealers  
3900+ pages of worlds best  
philatelic items.

#### APRIL 11

APS slide show #67, The Postal History of the Civil War, Federal Patriots, by Robert Davidson.

#### APRIL 25

NO MEETING

Antique show at the church.

#### MAY 9

LIVE AUCTION-Get ready now!

### NEW LIBRARY ADDITIONS

Two new volumes have been added to the RPA library. Both are available for loan. See Mrs. Bernice Watson, club librarian for details.

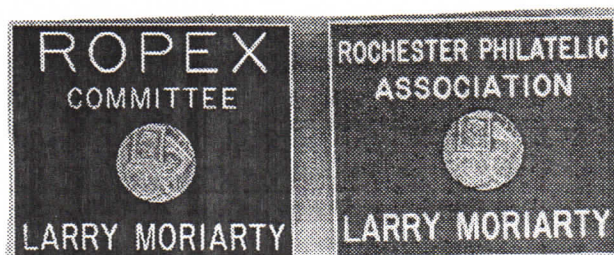
The first addition is a three volume set. "This is Philately" by Kenneth A. Wood. A Van Dahl publication. This was a purchased set from Warren Stevens. A \$59.95 value for \$40, OK'd by the Board.

The second book has been donated to the RPA by Larry Moriarty, RPA member and President of United Postal Stationery Society. The latest edition of the UPSS Guide to Postal Stationery. This is a must for anyone interested in embossed envelopes. The section on 1904 recut dies illustrates some 140 varieties.

### CLUB BADGES

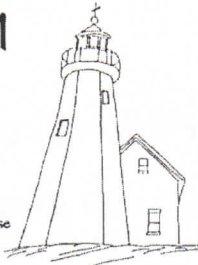
Illustrated below are two types of club badges that Larry Moriarty has offered to make available to those that are interested. The ROPEX committee badge is red with white lettering and the RPA badge is green and white. A "gold" medallion 3/4 inch in diameter is mounted in the center. The badge is 2½ by 3 inches.

Place your order with Larry. The price per badge from a Buffalo dealer is about \$4.00.



## ROPEX-91

Honors Local  
Lighthouses



Charlotte-Genesee Lighthouse  
Rochester, New York  
1822

The lighting of entryways to key ports became a necessity during the early 19th century. In 1805, Congress established the Port of Genesee and a collector was appointed for the new customs district. The lighthouse replaced a 1792 log cabin. The landmark is now leased to the Charlotte-Genesee Lighthouse Historical Society. Ropex is a production of the Rochester Philatelic Association.

## ROPEX-91

Honors Local  
Lighthouses



Old Sodus Lighthouse  
Sodus Point, New York  
1825, 1870

The original, built in 1825, was a rough split stone tower. Replaced in 1870 with a 45-foot square limestone tower and attached two-and-a-half story dwelling quarried in Kingston, Ontario. Today maintained by the Sodus Bay Historical Society. Ropex is a production of the Rochester Philatelic Association.

## ROPEX-91

Honors Local  
Lighthouses



Braddock Point Lighthouse  
Hilton, New York  
1896

Conceived in the 19th century to be the brightest beacon on Lake Ontario. A powerful 20,000 candle-power beam could be seen some eighteen miles out on Lake Ontario. Now a private residence, tastefully maintained. Ropex is a production of the Rochester Philatelic Association.

### Memorial Day Cancel UPDATE

Due to the high cost of obtaining a Special Die Hub Cancel (\$1000.00) it has been decided not to procure this item. Instead we will request a Memorial Day Station cancel to be used at the GMF.

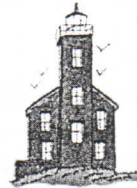
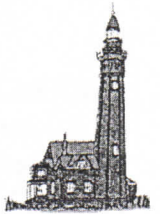
Just a point of interest: our last request for a hub cancel cost \$145.

## ROPEX-91

Old Sodus Lighthouse  
Sodus Point, New York  
1825, 1870



Braddock Point Lighthouse  
Hilton, New York  
1896



Charlotte-Genesee Lighthouse  
Rochester, New York  
1822

*Illustrations by the author of the book "Lighthouses of the Rochester Area"*

order from:

RPA

PO Box 10206

Rochester NY 14610-0206

## ROPEX-91 SHOW ITEMS

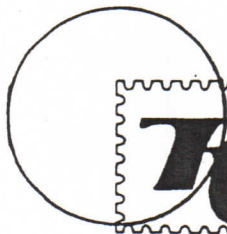
Covers \$1.50  
3 for \$4.00

Souvenir Cards

\$2.50 mint

\$3.00 serviced

include 50 cents and  
address label



# STAMP SHOW

ROCHESTER PHILATELIC ASSOCIATION, INC.  
PO Box 10206 ROCHESTER, NY 14610-0206

DEAR ROPEX EXHIBITOR AND / OR RPA MEMBER,

THE ROPEX 91 BANQUET WILL BE HELD ON SATURDAY, APRIL 6TH AT 7 PM. WHAT FUN WE CRAZY PHILATELISTS WILL HAVE ON THAT NIGHT.

BUT BEFORE YOU EAT, I NEED A FEW THINGS FROM YOU. THE HOTEL HAS NEW RULES FOR BOOKING THE BANQUET. THEY NEED TO KNOW HOW MANY AND WHAT WE ARE EATING BY WEDNESDAY THE 3RD. SO THEREFORE, ON THE LOWER HALF OF THIS LETTER IS SOME VITAL INFORMATION I NEED TO KNOW FROM YOU BEFORE I CALL IN THE TOTALS. PLEASE CLIP AT THE LINE, FILL IN ALL PERTINENT INFORMATION LISTED AND MAIL IT TO THE POST OFFICE BOX ABOVE. MAKE CHECKS PAYABLE TO: ROPEX 91 BANQUET. YOU MUST CHOOSE YOUR DINNER OR YOU WILL GET CHICKEN. PAYMENT REQUESTED IN ADVANCE!

I CANNOT STRESS THAT YOU MUST GET TO ME THE INFORMATION I SEEK BEFORE WEDNESDAY THE 3RD. HE WHO HESITATES EATS BURGER KING!

NO EXCEPTIONS!!!

CLIP ON LINE BELOW AND SEND TO ROPEX AT ADDRESS ABOVE!

NAME \_\_\_\_\_

ADDRESS \_\_\_\_\_

CITY \_\_\_\_\_

TELEPHONE (    ) \_\_\_\_\_

CHOICE OF DINNER

\_\_\_\_\_ LONDON BROIL (BEEF)

\_\_\_\_\_ STUFFED CHICKEN

\_\_\_\_\_ VEGETARIAN SPECIAL

PRICE: \$ 17.50 PER PERSON. RESERVE \_\_\_\_\_ DINNERS AS SELECTED ABOVE.

SEND PAYMENT WITH ORDER. YOU CAN PICK UP YOUR TICKETS AT THE HOSPITALITY TABLE ANYTIME DURING THE SHOW. BON APPETITE!!! PAST THE TEETH, PAST THE...

SINCERELY,

RICHARD KASE - ROPEX 91 BANQUET CHAIRMAN

# ROPEX-91

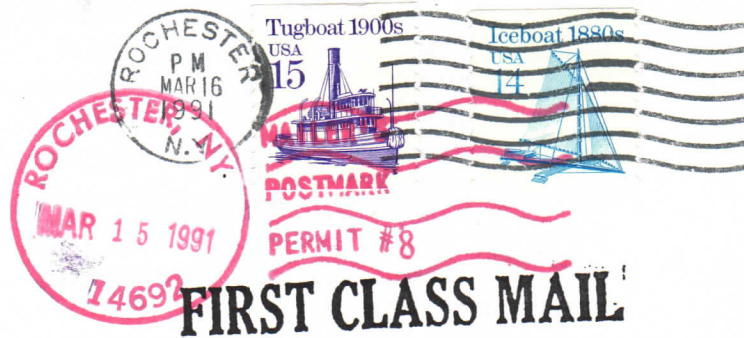
NATIONAL STAMP SHOW



DOWNTOWN HOLIDAY INN  
 ROCHESTER, NEW YORK  
 AN R.P.A. PRESENTATION

The HINGES & TONGS is published bimonthly by The Rochester Philatelic Association, Inc., PO Box 10206, Brighton Station, Rochester, NY 14610-0206

Typed articles may be submitted by the 25th to the editor:  
 Joseph K. Doles  
 34 Carlisle Street  
 Rochester, NY 14615-2043



# Rpa

Norm Wright Sr.  
 33 Northumberland  
 Rochester NY 14618