

# HINGES and TONGS

Rochester Philatelic Association, Inc.

FOUNDED 1913      newsletter for Jan/Feb 1991

---

## RPA CONSTITUTION

The latest edition of the clubs' Constitution is available at any meeting or by mail. If you would like a copy sent to you please send 45¢ in postage and your name and address to: Joseph K. Doles, RPA Corresponding Secretary, PO Box 10206, Brighton Station, Rochester, NY 14610.

The Constitution is printed on five pages and this represents a considerable amount of work and expense. It was for this reason the Board decided to make this offer of sending a copy to only those that requested it.

---

## Christmas tree has extra ornament

LINN'S 12-31-90

In addition to paper types, color and perforation differences between the sheet and booklet versions of this year's United States contemporary Christmas stamp, there also is a design difference.

The sheet version of the stamp contains a tree ornament that the booklet type doesn't have. Other differences were reported in the Nov. 5 *Linn's*, page 7.

As shown in the accompanying illustration, the extra ornament appears on the right side of the second tier of branches on the stylized Christmas tree. The same location on the booklet stamp is blank.

The additional ornament, blue-green in color, would appear to be an extension of the blue-green garland that is



Numerous differences between the sheet and booklet versions of the 1990 contemporary Christmas stamps, including the extra ornament shown here, caused Scott to give the issue two separate catalog numbers.

next to it.

The reason for the differences between the stamps is because they were produced by different printers.

The sheet version (left in the illustration) was printed by the American Bank Note Co. The paper is soft and porous. The perforations mea-

sure about 11 (10.9). The background red is bright.

The booklet stamp (right) was printed by the Bureau of Engraving and Printing. The paper is hard and brittle and separates cleanly. The perforations of the booklet stamp measure about 11¼ (11.2). The background red is duller and grainier looking.

Scott has noted the differences and has assigned separate numbers to the stamps. The sheet version is Scott 2515; the booklet is 2516.

As the U.S. Postal Service continues to work with more outside printers, differences like these are inevitable, giving collectors more varieties to watch for.

Thanks to *Linn's* reader Horace Todd for noting the extra ornament. ■

## MEMBER IN PERSIAN GULF

Leo Tydings, past RPA vice-president was called to active duty in the Persian Gulf. Leo, a City of Rochester policeman in the Maplewood Section, is a U.S. Coast Guard reservist. You can write to Leo at the following address:

P.O. LEO TYDINGS  
077-46-9718  
U.S.C.G. PSV 301  
APO, NEW YORK  
09298

I'm sure Leo will enjoy your cards and letters and I know we all send our good wishes and prayers for an early resolution in the Persian Gulf.

---

## PROGRAMS FOR JAN/FEB 1991

### JANUARY 10

APS Slide Show...Postmasters' Provisionals by J. David Baker

Uniform postal rates were established by an Act of Congress on July 1, 1845. At that time there were no postage stamps yet in circulation. Not until March 3, 1847 did an Act of Congress authorize the postmaster general to issue postage stamps.

There was, therefore, a period of uniform rates but with no stamps available, and individual postmasters created what are now known collectively as postmaster's provisionals.

The postmasters' provisionals are now among the major rarities of the world. Lockport, NY postmaster Hezekiah W. Scovill issued one in 1846 and is among the rarest, only one full copy is known.

### JANUARY 24

Live auction...see auction details elsewhere in this newsletter.

### FEBRUARY 14

APS Slide Show... Cats On Stamps by Betty Stevens

### FEBRUARY 28

APS Slide Show... The Stamps of Guatemala by Warren Stevens

### MARCH 14

Live Auction and One Frame Exhibits...watch for more information

**AUCTION RULES RESTATED  
IN EFFECT 1/1/91**

**LIVE AUCTIONS**

- 1.) Cash only
- 2.) Up to 5 lots may be submitted
- 3.) 10% from seller to the RPA General Fund

Members are asked to submit each auction lot with a auction sheet available at the head table. Please give your lots to the auction chairman so he can enter it on the auction log and issue the lot a number.

Members will be issued auction number paddles to be used during the bidding.

Members are requested to wait for the auction chairmans' OK before taking any lots from the auction tables.

**SILENT AUCTIONS**

- 1.) Cash only direct to seller
- 2.) Up to 5 lots may be submitted
- 3.) no sellers fee is applicable for silent auctions

**DONATION LOTS ARE ALWAYS WECOME, THE PROCEEDS TO  
GO TO THE RPA GENERAL FUND.**

---

**NEW BOOK IN CLUB LIBRARY**

A new soft covered book from the APS is now available for loan to RPA club members in good standing. See Mrs. Bernice Watson, Club Librarian, to borrow this new book. The **Manual of Philatelic Judging**, Third Edition, copyright 1990 is 120 4"x9" pages. Some of the chapters are: Conduct of the Jury, Judging an Exhibit of Traditional Philately, Judging Postal History and Postmark Exhibits, Thematic, Aerophilately and Postal Stationery, First Day Covers, Revenues and Special Studies are all covered. Requirements for Judges and Rules for Shows in the World Series of Philately are also covered. 18 chapters in all covers everything the person who wants to start exhibiting needs to know.

Speaking of exhibiting, remember that the month before ROPEX has always been the one time each year that members can show off what they collect by putting together a one frame (16 pages) exhibit. The winner gets one frame free at that years ROPEX Stamp Show. This March 14th is competition night.

# Freedom of Religion Not Being Violated

STAMPS  
12-15-90

After reading Karen Henry's "Editor's Album" in the Dec. 1 issue of STAMPS on how in some peoples minds the USPS is violating our freedom of religion, I do not know of any time that the USPS has told me what I had to believe or not believe or what I had to buy. This includes Christmas stamps, as well as the stamps that have a religious connection. Stamps that come to mind, other than Christmas stamps both contemporary and religious, are Washington Praying at Valley Forge (Scott No. 645), Touro Synagogue (Jewish, Scott No. 2017), St. Francis of Assisi (Christian, Scott No. 2023). We could always get pickie about Sitting Bull (Scott No. 2184), as he was a medicine man.

We could start a campaign of marches, protests and sit-ins. Perhaps we would be successful in getting rid of all stamps with religious overtures. We could also have all past religious stamps burned to protect our freedom of religion, but then there would not be any religion would there?

Now we have successfully taken away the freedom of religion, speech and press, because no one would be allowed to say anything. Wow, STAMPS, Linn's, Stamp Collector, and Mekeels and local newspapers, would be out of business.

Now that we have successfully stopped the freedom of religion speech and press, we next aim for the stamps of the business industry, mainly banking, commerce, railroads, etc., which should also be separate from the state.

Instead of doing all of this and tiring myself out not collecting stamps, I would rather relax and enjoy collecting those stamps that I enjoy and let the next person do the same.

The USPS is in a service business and they're to sell stamps and deliver mail and in my opinion rip us off with T-shirts, pins and other items, however I have the freedom not to buy these products and if enough people did not buy them, the USPS would not sell them. The freedom of money talks.

I believe the USPS is trying to make money off us, not dictate to us. I have the freedom to spend with them what I wish, and I will use that freedom and all the other freedoms the Constitution guarantees me.

Thank you very much for your thought-provoking articles, and keep using your freedoms of speech and press.

Brandon Sterling  
Rochester, NY

# 1991 U.S. Stamps & Stationery

- \*January — Flower, nondenominated, Washington, DC 20066.
- Make-up rate, nondenominated (this stamp, along with 25-cents additional U.S. postage, will be equivalent to the Flower stamp rate).
- Jan. 25 — 4¢ Steam Carriage coil, Transportation Series, Tucson, AZ 85726. (Feb. 24).
- Feb. 22 — 50¢ Switzerland — Joint issue with Switzerland (700th anniversary), Washington, DC 20066 and Bern, Switzerland (Mar. 24).
- March — Vermont Statehood commemorative (200th anniversary), Bennington, VT 05201.
- Apr. 1 — Carnegie Hall postal card, Historic Preservation Series, New York, NY 10199 (May 1).
- \*April — Dennis Chavez definitive, Great Americans Series, Albuquerque, NM 87101.
- Flag with Olympic Rings definitive (booklet), undetermined release site.
- Flag Over Mt. Rushmore definitive coil (50th anniversary), Mt. Rushmore, SD 57751 (actual post office is Keystone, SC, same zip).
- May 1 — Savings Bond commemorative (50th anniversary), Washington DC 20066 (May 31).
- May 9 — Love, Honolulu, HI 96820, (sheet and booklet of 1-oz. rate stamp); (sheet of 2-oz. rate) (June 8).
- May 22 — William Saroyan, Literary Arts Series, Joint issue with U.S.S.R., Fresno, CA 93706 and Yerevan Armenia, U.S.S.R. (June 21).
- May 28 — Hubert H. Humphrey definitive, Great Americans Series, Minneapolis, MN 55401 (June 26).
- May 30 — Flag definitive sheet stamps, Waterloo, NY 13165 (June 29).
- \*June — Express mail (domestic rate), Atlanta, GA 30304.
- June 8 — Cole Porter commemorative, Performing Arts Series, Peru, IN 46970 (July 8).
- June — "Old Red" postal card (Administration Building at University of Texas, Medical Branch at Galveston), Historic Preservation Series, Galveston, TX 77550.
- \* \$1 USPS/Olympic Logo definitive, undetermined release site.
- June 21 — Antarctic Treaty airmail, Washington, DC 20066 (July 21).
- July 12 — Summer Olympics commemorative (sheet with five different designs), Los Angeles, CA 90052 (Aug. 11).
- Aug. 13 — Numismatics commemorative, Chicago, IL 60607 (Sept. 12).
- August — World War II souvenir sheet with 10 different commemorative stamps (50th anniversary), undetermined release site.
- Aug. 26 — Basketball commemorative (100th anniversary), Springfield, MA 01101 (Sept. 25).

- Sept. 7 — District of Columbia commemorative (200th anniversary), Washington, DC 20066 (Oct. 7).
- September — Centodians commemorative (booklet with five different designs), undetermined release site.
- Bill of Rights postal card, Constitution Series (200th anniversary), Richmond, VA 23232.
- Oct. 1 — Space Exploration commemorative (booklet with 10 different designs), Pasadena, CA 91101 (Oct. 31).
- October — Magazine Industry stamped envelope (250th anniversary), Naples, FL 33940.
- Oct. 12 — America Series airmail, Anchorage, AK 99501 (Nov. 11).
- Oct. 13 — Administration Building (University of Notre Dame) postal card, Historic Preservation Series (150th anniversary), Notre Dame, IN 46556 (Nov. 12).
- October — World Columbian Expo commemorative, undetermined release site.
- Oct. 17 — Traditional Christmas (sheet and booklet), Houston, TX 77201 (Dec. 16).
- Oct. 17 — Contemporary Christmas (sheet and booklet), Santa, ID 83866 (Dec. 16).

### Undetermined Dates

- Earl Warren definitive, Great Americans Series, Washington, DC 20066.
- Fishing Flies commemorative, Folk Art Series (booklet with five different designs), undetermined site.
- Jan Matzeliger commemorative, Black Heritage Series, Lynn, MA 01901.
- \* The actual issue date will be governed by the postal rate change.

The wildflowers sheet of 50 different designs, which was previously announced for issuance in 1991, has been deferred until 1992. The design of the wildflowers stamps could not be finalized until the new First-Class rate is announced, in January. In addition to this, with the large number of stamps needed to support the rate change, the stamps could not have been issued until late summer. Since that would not be the best time of year to issue the Wildflowers stamp, the decision was made to defer them.

The 1991 program contains a limited number of commemorative stamps — one of the smallest programs in recent years — because of the large number of definitive issues required for the rate change. Additional information on the 1991 stamps and stationery program will be announced in the future.

Ideas for stamps, may be sent to the Citizens' Stamp Advisory Committee, c/o Stamp Information Branch, USPS, 475 L'Enfant Plaza, Room 5800, Washington, DC 20260-6753.

# Sandy cancelers don't work

LINN'S  
12-31-90

A popular pastime of servicemen stationed in Saudi Arabia as part of Operation Desert Shield is to mail Saudi sand back home. This practice is causing problems for the military postal system, according to an article in the Nov. 21 Stars and Stripes.

According to the article, letters, laden with sand, are leaking, causing the sand to seep into the canceling equipment and bogging it down.

Sgt. Michael Bragg told Stars and Stripes that sand-filled letters have broken down canceling equipment several times, causing postal workers to sort and cancel outgoing military mail manually.

"There's nothing wrong with sending sand, but they've got to put it in boxes and mark it because that's merchandise and it needs a customs tag," said Sgt. Thomas Brown. "You just can't seal it in an envelope and send it through a canceling machine."

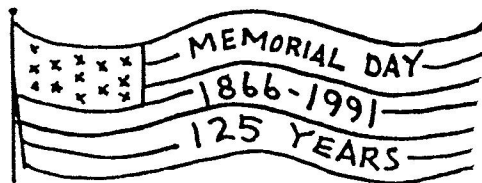
Some servicemen are saving tiny empty bottles of Ta-

basco sauce from their rations in order to mail sand.

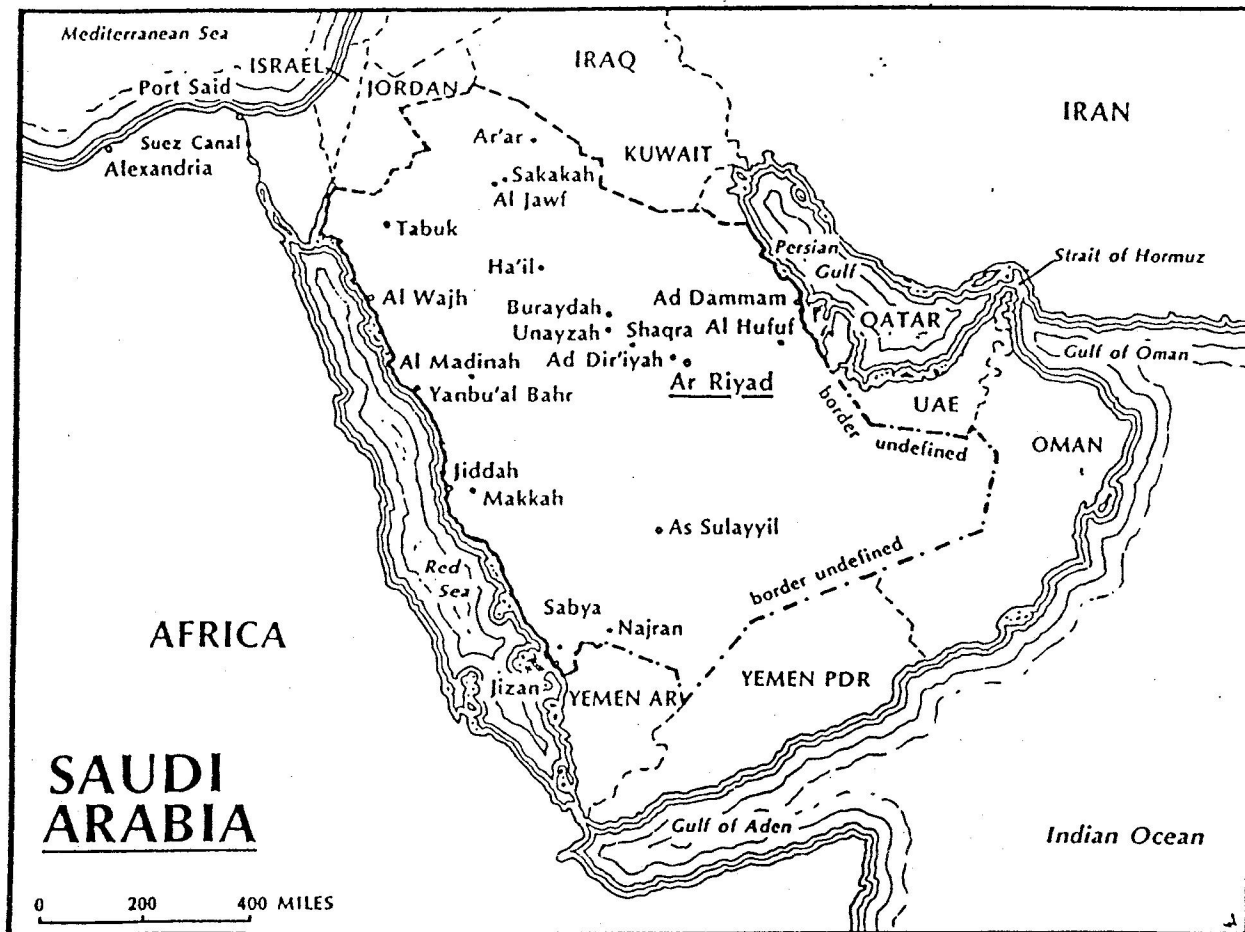
Bragg said, "They say the sand here in Saudi Arabia is holy sand. I guess that's one of the reasons why a lot of people want to send the sand home."

At any rate, the practice of mailing sand seems to continue, unabated. ■

The RPA and Chapter 53, CNYFDCS have applied for this slogan cancel to be used during April & May.



# SAUDI ARABIA, KINGDOM OF



Area: 830,000 sq. miles  
 Population: 10,794,000 (1984)  
 Capital: Ar Riyadh  
 Currency: Riyal (100 halalas)

Occupying about 80% of the Arabian Peninsula, Saudi Arabia is the focal point of the Moslem world, because the holy cities of Mecca and Medina are located within its borders.

From a range of mountains running along the Red Sea coast, the land slopes to the east and the Persian Gulf. It is mostly desert and in the south is the famous Empty Quarter, a great area of sand too arid for any life to exist.

There are no rivers in the country and rainfall does not exceed four in-



ches a year except in the southwest mountains bordering on the Red Sea, where up to 30 inches can fall annually. This is the location of the country's highest mountains, rising to more than 9,000 feet.

Temperatures often go above 120 degrees F and humidity along the coast can be high. In winter, freezing temperatures can occur in the central and northern areas.

The country's modern history begins with the conquest by Nejd of the Kingdom of Hejaz, which had become independent in 1916. Both had been part of the Ottoman Empire until World War I.

Hejaz comprised the area bordering on the Red Sea and included the holy cities of Mecca and Medina, while Nejd consisted of the larger eastern part of what is now Saudi Arabia.

In 1926, both areas were incorporated into the Kingdom of Hejaz and Nejd, which in 1932 became the Kingdom of Saudi Arabia.

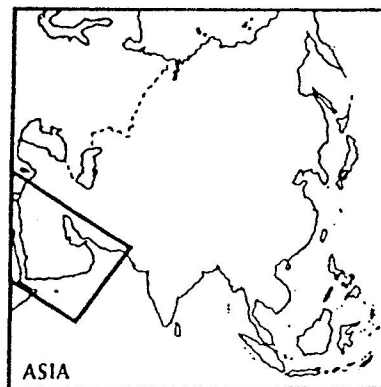
Oil is the basis of the economy and the country is estimated to possess one quarter of the known world oil reserves. Crops include

dates, and grains. There are deposits of gold, silver, and iron.

The 1979 per capita income was \$11,500, although this is believed to have dropped considerably as a result of the reduction in oil prices. The 1978 literacy rate was 15%.

Stamp issues have not been excessive. Beginning in 1975, their inscription was changed from "Saudi Arabia" to "K.S.A."

**Philatelic Bureau:** Division of Posts and Telegraphs, Philatelic Station, Ar Riyadh, Saudi Arabia.



## ROPEX-91

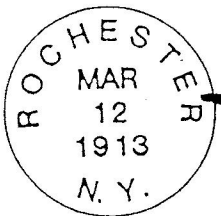
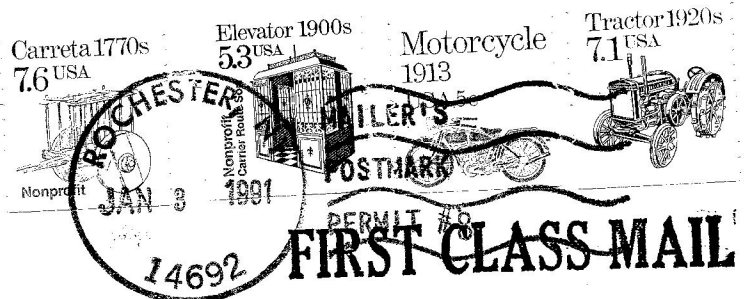
The theme for this years show is lighthouses. We will be honoring the three area lighthouses. Braddock Point, at Lighthouse Beach, Hilton, NY, Charlotte-Genesee Lighthouse, at Rochester and the Old Sodus Lighthouse at Sodus Point. Three cachets will be done, one for each lighthouse, a different cachet each day of the show. Also a souvenir card will be available at the show. The cancels and cachet covers will be done by Joe Doles. The souvenir card by Kelly Armstrong. The lighthouse booklet will be used used to service all items.

The cancel has been applied for and we have been assured that we will be able to have three separate date cancels. The cancel depicts the Charlotte lighthouse. Illustrated here.



The HINGES & TONGS is published bimonthly by The Rochester Philatelic Association, Inc., PO Box 10206, Brighton Station, Rochester, NY 14610-0206

Typed articles may be submitted by the 25th to the editor:  
Joseph K. Doles  
34 Carlisle Street  
Rochester, NY 14615-2043



# Rpa

Lawrence R. Moriarty  
48 Belview Drive  
Rochester NY 14609  
6719