

After several months of discussion, the Board of Governors recommends the following amendment be added to the RPA by-laws, Article V, Section 3, to allow for removal from elected office any officer who does not fulfill the duties of office.

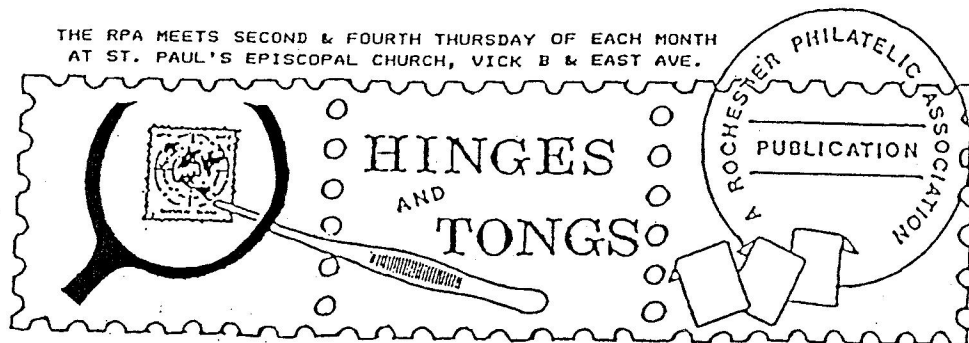
A prescribed procedure will be established as follows:

1. After absence from 3 consecutive meetings (general &/or Board) the person will be contacted by the President, who shall ask-
 - a. Reason for absence.
 - b. Expected return to duties.
 - c. Desire to continue holding office.
2. The President shall report to the Board on the above.
3. If sufficient reason & desire to continue service exists, no further action need be taken.
 - a. The matter will be tabled for 30 days and once again be brought up for discussion and general agreement that the situation is resolved.
4. If no sufficient reason for absence is given or lack of interest in serving the office is evident or continued absence persists, the Board Chairman will request in writing the resignation of the officer. If not received in two weeks, the Board of Governors shall take action.
 - a. A motion shall be properly made, seconded and passed to remove the absent officer from office.
 - b. The Board Chairman shall nominate a replacement for the office to be confirmed by the Board.
 - c. Upon above election, the new officer shall fill the remaining term of the office.



CHAPTER
MEMBER
0207-019273

THE RPA MEETS SECOND & FOURTH THURSDAY OF EACH MONTH
AT ST. PAUL'S EPISCOPAL CHURCH, VICK B & EAST AVE.



FOR FURTHER INFO CONTACT THE ROCHESTER PHILATELIC ASSOC., INC.
P.O. BOX 10206, BRIGHTON STATION, ROCHESTER, NY 14610

MAY — JUNE 1989

ROPEX-89 A SMASHING SUCCESS !!

1989-1990
RPA Officer
Nominations
Inside

1990 ROPEX CHAIRMAN ANNOUNCED

Elly Phelps and
Ada Prill will
co-chair

ROPEX-90

They will need
all our help, so
start planning
NOW !!

* * PROGRAMS * *

May 11— Bob Meegan of the western branch of the RPA will give a talk entitled "Humorous Aspects of Philately."

May 25 — John Kellas (III or more) will show us his slide program, "U.S. Imperialism in Paradise."

June 8 — Guest speaker John Babbitt and sidekick will entertain us with "200 Years—George to George." I've been hearing great things about this man's programs for years! If you would like to have supper with the speaker before the program, speak to Brad Sterling.

June 22 — Annual business meeting with strawberries and election of officers, not necessarily in that order.

June 24 — Annual banquet and auction at the Barnard Exempts. Details elsewhere in H&T.

Scott Publishing Co.



911 VANDEMARK ROAD, SIDNEY, OHIO 45365 513-498-0802

THE 1990 SCOTT CATALOGUE AND PHILATELIC SOCIETIES

Scott Publishing Co. recently has announced that its 1990 Catalogue will contain retail stamp values, that is, stamp values which reflect actual dealer selling prices. Additionally, stamps will be valued in a grade of Fine-Very Fine, one grade higher than in the past.

These changes may have both a short-term and long-term effect on how members of this society take part in specific services offered by the organization.

The combined effect of the changes will render it impossible for a user of the 1990 Scott Catalogues to compare stamp values in any of those volumes with stamp values in past volumes, cautions Wayne Lawrence, Scott president and publisher.

Participants in *society-sponsored auctions* may need to adjust bidding habits, he adds. Bidding at large discounts from 1990 catalogue value will decrease the bidder's chances of acquiring a lot. For best results, he advises, bidders should compare catalogue values with recent auction price realizations and place bids with that information in mind. Bargains may still occur at auction sales when there is little demand for a particular lot or type of material.

While there may be a perception that the catalogue changes will affect *society sales circuits*, Lawrence notes that as long as sellers continue to key their asking prices to retail, there should be no noticeable change in such prices. Sellers who key their asking prices to a percentage of catalogue value should clearly indicate in the terms what catalogue year and volume is being used for valuations. In the future, sellers may want to reassess that approach.

Society sponsored *trading or bartering programs* which are keyed to catalogue value will have to make appropriate adjustments, until all of the volumes of the 1990 Scott Catalogue are published and the participants have had a chance to adapt to the new value structure.

Wherever possible, Lawrence says, barter terms should point out which catalogue year and volume is used.

The long-term effect of the new Scott valuing practices will be quite favorable to barter groups, Lawrence says. The reflection of retail prices throughout the Scott Catalogue will eliminate the country-to-country percentage differences between catalogue value and retail price that occurred under

the previous Scott valuing system. Under the new system, it should be possible to trade fairly among all countries and eras, using the 1990 Scott Catalogue as a basis.

Another significant change in the 1990 Scott Catalogue involves the valuing of unused stamps as never-hinged on a country-by-country basis. Where stamp values are based on a never-hinged state, notices will be placed prominently both at the beginning of the country's listing and within the text where such effect on the value begins.

The Scott Catalogue is an annual publication, which reflects market activity as closely as possible. Catalogue users should recognize that currency fluctuations and general market movement may affect individual retail stamp prices during the period following the release of the 1990 Catalogue and preceding the publication of the 1991 edition.

<p><u>OFFICE</u> 37 CENTENNIAL ST. ROCHESTER, NY 14611 328-6080</p>	<p><u>SHOWROOM</u> 112 BEVERLY HGTS. ROCHESTER, N.Y. 14616 621-5434</p>
<p>R. S. Stamp Co. U.S., U.N., FOREIGN STAMPS</p>	
<p>621-5019 after 6pm</p>	
<p>BY APPOINTMENT</p>	<p>R. STEEB</p>

RPA member dealer

ROPEX '89 SHOW COVERS & CARDS

HOW MANY UNITED NATIONS "World Weather Watch" First Day Covers:

(U.N. First Day Ceremony at ROPEX '89, Friday, April 21, 9:30 a.m.)

_____	1. Cacheted FDC with 25¢ World Weather Watch stamp.....	\$1.75 plus S.A.S.E.
_____	2. Cacheted FDC with 36¢ World Weather Watch stamp.....	\$2.00 plus S.A.S.E.
_____	3. Cacheted FDC with 25¢ & 36¢ World Weather Watch stamps.....	\$2.50 plus S.A.S.E.
_____	4. All three of the above World Weather Watch FDCs, set of three covers.....	\$6.00 plus S.A.S.E.
_____	ROPEX '89 Carousel Souvenir Card with graphics, unserviced.....	\$2.50 plus 50¢ postage and addressed label.
_____	ROPEX '86 Carousel Souvenir Card with graphics tied with a U.S. carousel issue and special show carousel cancel.....	\$2.75 plus 50¢ postage and addressed label

ROPEX '89 cacheted CAROUSEL SHOW cover offers:

_____	1. Single Carousel show cover tied with a U.S. Carousel stamp and special show carousel cancel.....	\$1.50 plus S.A.S.E.
_____	2. Single cover tied with a Block of 4 Carousel stamps and special carousel cancel.....	\$2.26 plus S.A.S.E.
_____	3. Four covers, each tied with a different Carousel stamp and special show carousel cancel.....	\$4.00 per set of four (4) plus S.A.S.E.
_____	4. Set of three (3) show cover, one for each show date tied with a Carousel stamp and special show carousel cancel.....	\$3.50 per set of three (3) plus S.A.S.E.

Please make check or money orders payable to ROPEX, NO CASH. TOTAL enclosed \$ _____

Name _____

Address _____

Collectors' Workshop

Precancels offer inexpensive alternative

The March 6 Refresher Course (page 48) discussed postmarks. It was noted in that column that a postmark is any official postal marking that bears the name of the

post office and mailing date. We distinguished between postmarks and cancellations, which were said to be "any marking applied by postal officials to ensure that stamps are not used more than once."

Refresher Course

By Steven J. Rod

post office and mailing date.

This week's Refresher Course subject deals with a collecting area that has roots in both postmarks and cancellations. The collecting area I'm referring to is precancels.

Precanceled stamps are those that have been preprinted with cancellations before their sale to the public. They were designed to speed the processing of mail by avoiding the canceling process.

Precancels have always been used primarily by large companies and bulk mailers. Today, precanceled stamps are still purchased by bulk mailers, but collectors may

of the stamp itself is secondary.

Precancels offer the collector a relatively low-cost collecting area.

Since many precanceled

shown in Figures 2 and 3.

Precancels lend themselves to many other fun topics as well.

Shown in Figure 4 are examples from a precancel collection that features only those towns and cities with people's names. Note that the 3¢ Lincoln stamp bears a Lincoln, Neb., precancel. This is a fun challenge for collectors to find precancel town and city names that are related to the subject depicted on the stamp.

As you can see, virtually any topic can be used for a challenging precancel collection.

There are basically two types of United States precancels. They have been classified as local and Bureau precancels.

Locals are those precancels



Figure 3. A single stamp or complete series can provide a precancel collector with the challenge of finding as many city names as possible.

offices without the need for further cancellation. Bulk mail customers are rewarded for this labor by paying a per-piece postage rate that is lower than the standard first-class rate.

The March 6 Refresher Course column also described how some postmarks are many times more valuable than the stamp they cancel. The same is true for precancels.

One of the main focuses of

stamps were prepared in huge quantities on stamps that have relatively low value,



Figure 4. Cities that bear people's names, such as those shown here, can add interest to a collection. Note that the 3¢ Lincoln stamp bears a Lincoln, Neb., precancel.

their cost is usually not a major factor.

You need much more patience than money to achieve a large precancel collection. Precancels do offer a chance for the specialist to acquire varieties and issues that are difficult to locate and are expensive. But for the beginner, the geography buff, or the collector who simply wants to acquire a large collection for a small amount of money, precancel collecting is the answer.

There are a number of ways to sort precancels. Your own interests and desires will dictate your choices in this matter.

There are some collectors who collect precancels from a single state.

For example, a number of Illinois precancels are shown in Figure 1. An Illinois collector's interest is getting as many examples of precancels from different towns and cities in that state as possible.

You might want to collect a single stamp's precancels. That is, all precancels occurring on a single stamp or series of stamps. Examples of this type of collecting are

that have been produced under the authority of an individual post office. Local precancels offer many opportunities for acquiring varieties, since each postmaster utilized different styles of print and layout when preparing the equipment used to make the

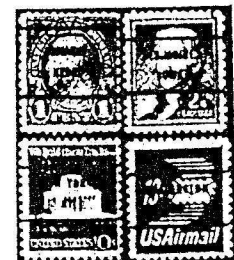


Figure 5. Examples of Bureau precancels are shown here. The overprint is applied by the BEP.

overprints. All but the Chicago Ill. precancel in Figure 1 are typical examples of the varieties of type and style found in these locally prepared stamps.

Postmasters are able to produce precancels in quantities that meet limited needs.

When huge quantities are needed for a large bulk



Figure 6. Service-inscribed stamps have the service designation inscribed on the printing plate. These stamps are considered by many to be precancels.

mailer, a postmaster requisitions the needed precancels from Washington, D.C.

These precancels, known as Bureaus, are produced by the Bureau of Engraving and Printing. They are applied on presses that make them much more uniform in typeface and style than their local counterparts. Bureau precancels provide the collector with much opportunity for the thrill of the hunt. Figure 5 illustrates

er both service-inscribed and service-indicated stamps precancels, since they are used the same way. They are placed in the Bureau precancel category by these collectors.

Precancel study is an aspect of stamp collecting that offers thousands and thousands of stamps at minimal cost. But there is a need to acquire a good knowledge base about the stamps you are col-



Figure 7. Service-indicated stamps have the designation applied as an overprint, and are considered precancels.

several examples of Bureaus.

A relatively new entry into the field of bulk mail use stamps are service-inscribed and service-indicated stamps.

Service-inscribed stamps have the service they are intended to pay inscribed on the printing plate. Precancel overprints have been applied to some of these stamps as well. Current bulk-rate (precanceled) stamps have the service inscription printed in a different color than the central design. Examples of service-inscribed stamps are shown in Figure 6.

Service-indicated stamps are those that bear a precancel type overprint that states their intended purpose. These stamps are often confused with service-inscribed stamps.

Examples of service-indicated stamps are shown in Figure 7.

Precancel collectors consid-

lecting. There is an organization that is devoted to precancel collecting. It is called the Precancel Stamp Society. This organization publishes the monthly *Precancel Forum* and has a number of other services for members.

Through the PSS, you will learn about the different catalogs, publications and resources available for learning about precancels.

You may obtain more information about the PSS from Arthur Damm, 1750 Skippack Park, No. 1603, Center Square, Pa. 19422. Please include 45¢ postage to help defray costs.

In addition, you may want to read Linn's regular column on precancels which appears in the fourth issue of each month. It is written by precancel specialist Dilmund Postlewait. ■



Figure 1. Some precancel collectors specialize in a single state. Shown here are precanceled stamps from Illinois.

purchase them as well.

When used by large companies, precancels are usually applied by machine. The mail pieces are then usually sorted by ZIP code, and sometimes

precancel collecting is that it concerns itself primarily with the type of imprint and the name of the city that appears on the precanceled stamp. The particular type or variety



Figure 2. A single stamp, such as the 1/2¢ Nathan Hale Issue, can be an area of focus for the precancel collector.

Congratulations to Maureen Triggler, who won the Reserve Grand Award at ROPEX for her exhibit entitled "Wales - A Postal History." Maureen also won the APS research award and the APS pre-1900 medal, as well as the George LeFebvre Award for the best exhibit by an RPA member. Hats off to Maureen - yes, Dusty, baseball caps too!

Peter Lerpiniere, a friend of the RPA from Canada, earned a vermeil for his exhibit of Japanese RPO's.

Gary Schroeder of RPA-West got a silver for his New Testament exhibit. Gary was also awarded the ATA bronze medal and the Virginia Guebler Award for the best topical exhibit by an RPA member.

Ray Stone's "Croatia" was given a silver-bronze - and a kiss for Mrs. Stone from Larry.

Kelly Armstrong took home a bronze (but no kiss) for his exhibit of Naval Covers, which we hope to see on an RPA program next year. And Walter Orton, who won the RPA one-frame competition in March, was awarded a bronze for his one-frame exhibit of Nevada Revenue Stamps.

Cheryl Edgcomb, who had a youth activities table at ROPEX this year, won a bronze for her "Rainbows," being out-medaled by her daughter, whose "Ladies in Dresses" was awarded a Junior Silver.

Thanks to lots of hard work by dozens of club members, ROPEX 89 was a success in all ways! We had excellent sales at the hospitality table; we got the show set up and taken down in near-record time; the UN First Day Ceremony was attended by just enough people to fill the room without awkward overflow - perhaps half a dozen people were standing.

And, most important, we had a lot of fun, especially those who did the most work. If you didn't join in, you missed out on a lot of comraderie and feeling of accomplishment - be sure to become part of the team for next year.

A few favorite moments: watching the Seabreeze carousel horse ride the escalator. Having "Old Glory" make a belated entrance at the World Weather Watch ceremony, complete with its own weather system.

Hearing Rick blush over the PA system when HE won the TV set. Buying the cover I'd been wanting for a year from Gary Kunzer, who was with us courtesy of Eastern Airlines' financial problems, which canceled the meeting he was supposed to attend. And, last but not least, hearing Larry dredge out that old story about Ameripex and realising that he really was talking about me. (Thank you, Larry!) amp

1989-90 RPA OFFICER NOMINATIONS

President
Vice-President
Treasurer
Corresponding Secretary
Recording Secretary
Board of Governor (1 seat)

John P. Kellas, III
Brandon L. Sterling
James M. Trenton
Joseph K. Doles
Eleanor A. Phelps

Richard A. Kase
Betty (Dusty) Miller

Show Theme
Once Upon a Carousel
and Dusty

Dick Kase "Dusty" Miller Rick Kase

National Anthem
Rick Kase Evola Frey

Kelly Armstrong receives
a bronze

Bill Peterson
Channel 13
Guest Speaker
UN ceremony

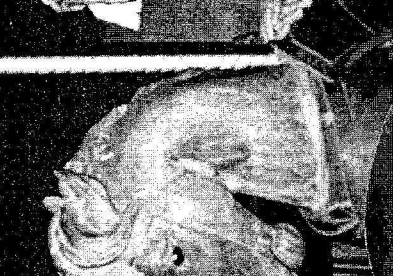
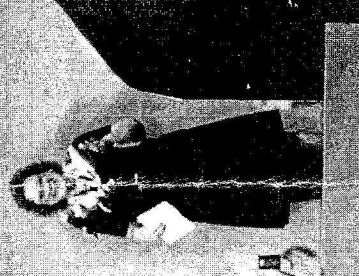
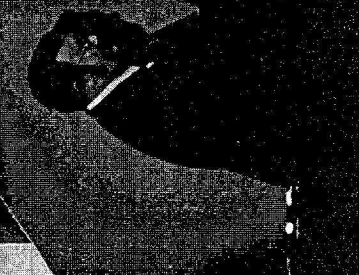
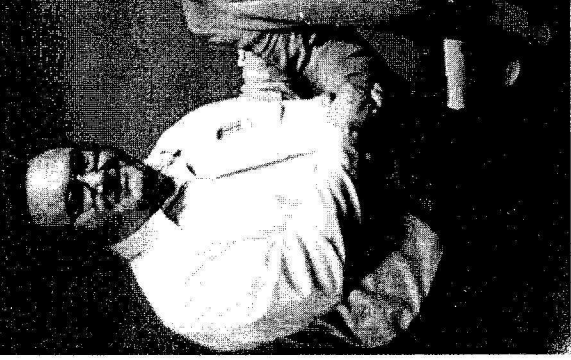
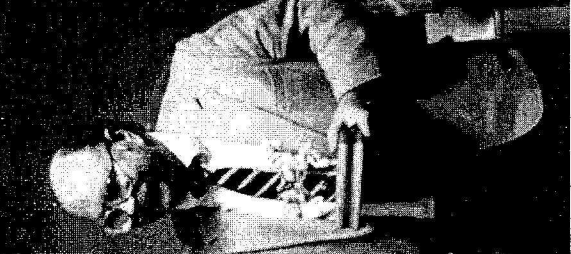
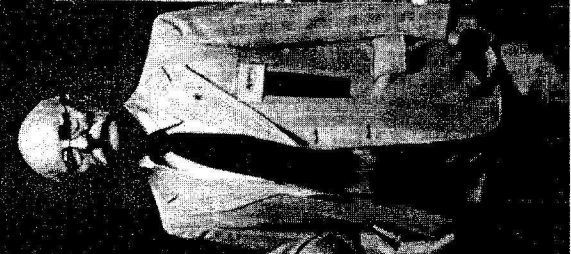
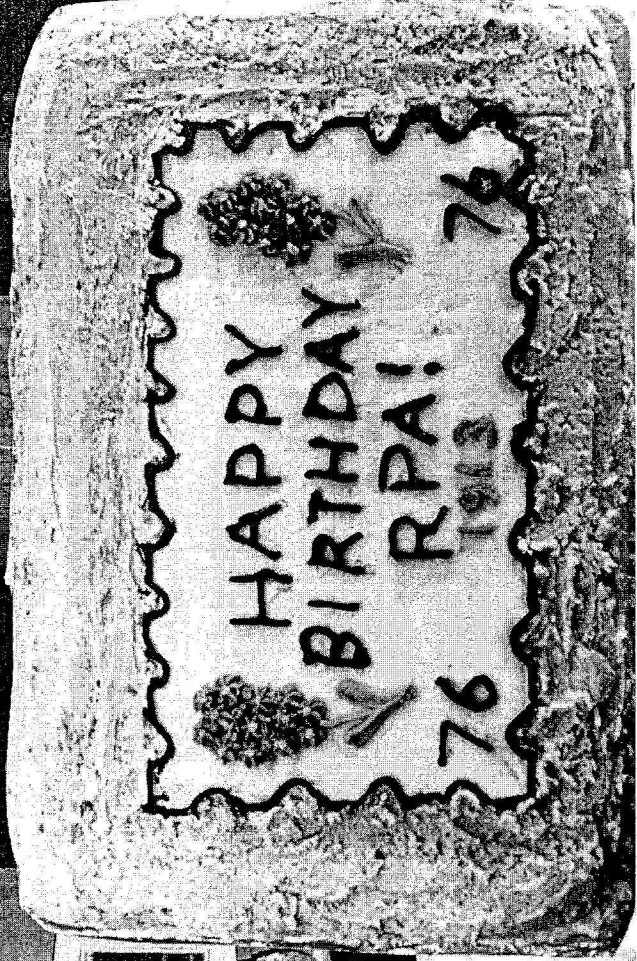
Nancy
Zielinski-
Clark
Show
Banquet
Speaker

Rick Kase receiving
presentation pack from
UNPA rep. Ed Hynes

Rick Mike Jolly Larry Moriarty
ROPEX-89 Grand Award Winner

Rick Kase

76th RPA Birthday Cake



RPA ANNUAL BANQUET

JUNE 24, 1989
 HAPPY HOUR
 6-7PM

DINNER AT 7PM

**BARNARD EXEMPT
 RESTAURANT & PARTY HOUSE**
 360 MAIDEN LANE

BUFFET

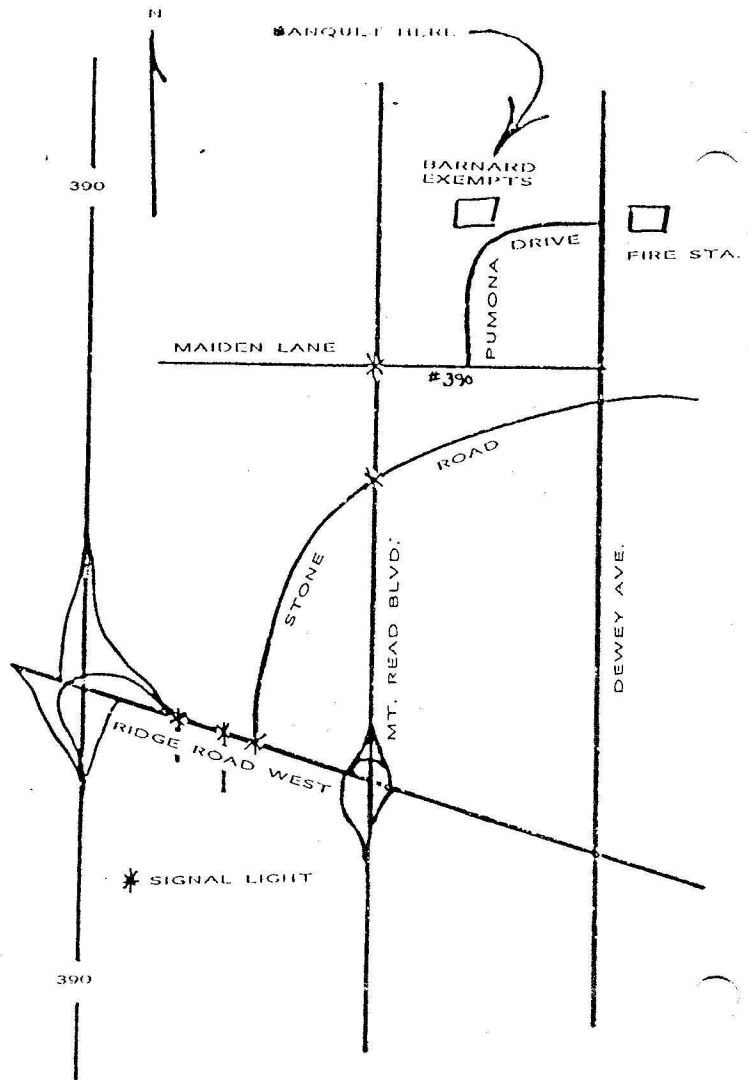
Roast Beef
 Fried Chicken
 Baked Macaroni with Meatsauce
 Chef Salad

Oven Brown Potatoes
 Hot Vegetable
 Baked Beans
 Spiced Beets
 Jello Mold

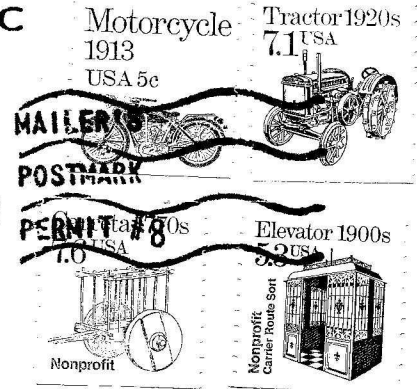
Rolls and Butter
 Coffee, Tea or Milk

ADVANCED RESERVATIONS NEEDED

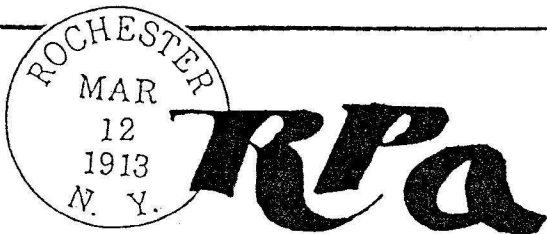
\$10.00 per person



THE ROCHESTER PHILATELIC
 ASSOCIATION, INC.
 IN OUR 76th YEAR



THE HINGES & TONGS IS
 PUBLISHED BIMONTHLY BY
 THE ROCHESTER PHILATELIC
 ASSOCIATION, INC., P.O.
 BOX 10206, BRIGHTON STATION,
 ROCHESTER, NY 14610.
 Typed articles may be submitted
 by the 25th to the Editor.
 Editor: Joseph K. Doles
 34 Carlisle St.
 Rochester, NY 14615-2043



FIRST CLASS MAIL

Lawrence R. Moriarty (6719)
 48 Belview Drive
 Rochester, New York 14609