



The RPA MEETS SECOND AND FOURTH THURSDAYS OF EACH MONTH AT

St Paul's Episcopal Church Vick B& East Av

Hawaii Statehood 1959-1984



The Hawaii Statehood stamp will debut March 12 in Honolulu.



P.O. BOX 10206, BRIGHTON STATION, ROCHESTER, NY 14610

Volume 84 Numbers 3/4

Association previews ROPEX

The Rochester Philatelic Association will sponsor ROPEX '84 March 23-25 in the Holiday Inn, 120 E. Main St., Rochester, N.Y.

Admission will be free to this show which will be open 10 a.m. to 7 p.m. Friday, 10 a.m. to 6 p.m. Saturday, and 10 a.m. to 5 p.m. Sunday.

The following jury of accredited philatelists have been selected to judge the ROPEX competition: James M. Keally Jr., Gordon H. Torrey, the Rev. Richard J. Bennink, Henry Hahn, and Werner E. Gruenebaum.

The panel's collecting interests include: United States, Haiti, Canada, general Europe, topicals, Russia and offices, Middle East, China, Ethiopia, Liberia, postal history, Great Britain, Netherlands and Colonies, Israel, United Nations, Czechoslovakia, Austria, Germany, literature, and navy.

In keeping with the ROPEX custom, each exhibit will be judged independently against American Philatelic Society and American Topical Association standards.

The exhibition will include 2,500 to 3,000 pages on display, and the grand award winner will be eligible to compete in the APS' Champion of Champions competition.

This competition was introduced at the APS' 1968 show, which was held in Rochester, N.Y., and hosted by RPA.

The association will present gold, vermeil, silver, silver-bronze, and bronze awards,



The ROPEX '84 cacheted covers will honor the 150th anniversary of Rochester, N.Y. Each cover will feature a different aspect of the city's growth, such as the building of Eastman Kodak's headquarters in Rochester in the late 1800s.

and a number of other regional and national philatelic organizations will donate special awards for presentation.

The awards banquet will be held on Saturday evening.

Persons interested in making advanced reservations for the ROPEX '84 banquet can purchase the following package for \$12: a banquet ticket, souvenir card, cacheted cover, souvenir program, and an assortment of pamphlets on local places to see or eat.

Advanced reservations for the banquet can be obtained from ROPEX '84 banquet reservations, Box 10206, Brighton Station, Rochester, N.Y. 14610.

The show prospectus is still available for collectors interested in exhibiting at this open competition.

March/April '84



However, due to production schedules in the printing of the program, exhibitors' names and exhibit titles will not be included in the program because of the lateness in receiving the entry forms.

The prospectus may be obtained by writing to ROPEX '84 prospectus at the given address.

The bourse will consist of 30 dealers from Canada, the West Coast, central and midwest and northeast states, as well as New York.

In addition, the United States Postal Service will man a philatelic station and will offer current stamp issues and other philatelic material for sale.

The special show cancel will commemorate the 150th anniversary of the city of Rochester.

A set of three ROPEX covers will also honor this theme. Each cover will reflect the various aspects of growth over the years that have affected the city.

One cacheted cover shows the Rochester and Erie Canal, while a second cachet depicts the railroad station in downtown Rochester.

The railroad was at ground level until approximately 1881 when an agreement worked out by the New York Central Railroad and the city would place the four main line tracks into their present elevated location of today.

Coming Events

- Mar 8 " RPA ONE FRAME Contest, try your Hand at exhibiting a one frame stamp exhibit(6 pages). RPA Birthday Party program. Also a Short Business Meeting, 8:00pm. Philatelic Trade Hour starts at 7:00pm.
- Mar 22 "ROPEX SET*UP", Plan to help set-up the exhibit pages at the Downtown Holiday Inn starting at 4:00pm. Food and drink will be provided. MEMBERS ONLY.. Members who help will be rewarded!
- March 23-25 ROPEX'84 National Exhibition at the Downtown Holiday Inn.
- Mar 25 "ROPEX Take-down starts at 5:00pm. Please HELP.....

CONTINUED ON 3



Postes Canada
Canada Post

Canada stamp program

United States

March 5, Orchids. Four se-tenant 20¢ stamps: Pacific Calypso; Spreading Pogonia; Yellow Lady's Slipper; and Wild Pink. Square format, panes of 48, 1 group of 5 plate numbers. Miami, Fla. 33152. Scott 2076-79. (*Linn's* Feb. 20, page 1)

March 12, Hawaii. Single 20¢ commemorative for 25th statehood anniversary. Horizontal, standard commemorative size, panes of 50. Honolulu, Hawaii 96820. Scott 2080. (*Linn's* Feb. 27, page 15)

March 25, Maryland. Single 13¢ postal card for the founding of Maryland. St. Clement's Island, Md. 20686. (*Linn's* Feb. 27, page 2)

April 7, Baby Buggy. Single 7.4¢ definitive coil in Transportation series. San Diego, Calif. 92199.

April 16, National Archives. Single 20¢ commemorative for the 50th anniversary. Vertical, standard commemorative size, panes of 50 (quadrant printing), 1 group of 6 plate numbers. Washington, D.C. 20066.

April 7, Frederic Bartholdi. Single 20¢ commemorative for the French sculptor of the Statue of Liberty.

May 7, Summer Olympics. Block of four 20¢ commemoratives. Los Angeles, Calif. 90052.

May 7, Business. Postal 20¢ envelope for Small Business. Unembossed wrap-around design. Washington, D.C. 20066.

May 8, Torch. Single 13¢ postal card featuring the Olympic torch. New York, N.Y. 10001.

May 11, World's Fair. Single 20¢ commemorative for the Louisiana World Exposition May 12-Nov. 11. New Orleans, La. 70113.

May 17, Health. Single 20¢ commemorative for health research. New York, N.Y. 10001.

May 23, Douglas Fairbanks. Single 20¢ commemorative in Performing Arts series. Denver, Colo. 80202.

May 24, Jim Thorpe. Single 20¢ commemorative in American Sports series. Vertical, standard commemorative size, panes of 50, 1 plate number. Shawnee, Okla. 74801.

May 31, Russell. Single 10¢ definitive for Sen. Richard B. Russell in Great Americans series. Winder, Ga. 30680.

March 15, Yellowknife. Single 32¢ commemorative.
March 24, Year of the Arts. Single 32¢ commemorative, also marks Montreal Symphony 50th anniversary.
April 20, Jacques Cartier. Single 32¢ commemorative, joint issue with France.

May 18, Tall Ships Visit. Single 32¢ commemorative.
June 18, New Brunswick. Single 32¢ commemorative.
June 26, St. Lawrence Seaway. Single 32¢ commemorative for 25th anniversary; possible joint issue with U.S.

June 29, Canada Day. Miniature sheet of 12 different 32¢ commemoratives featuring paintings.

July 3, United Empire Loyalists. Single 32¢ commemorative for British sympathizers who fled the U.S.

Aug. 15, Glacier National Park. Single \$1 definitive in National Parks series.

Sept. 21, Lighthouses. Four se-tenant 32¢ commemoratives featuring Canadian Lighthouses.

Oct. 2, Steam Locomotives. Second four stamps in Trains series: one se-tenant 32¢ pair; single 37¢ stamp; and one 64¢ stamp.

Nov. 2, Christmas. Three stamps: 32¢; 37¢; and 64¢.

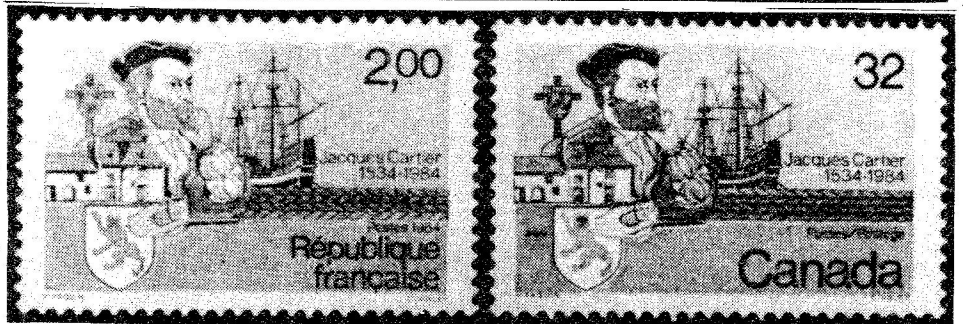
Nov. 9, Royal Canadian Air Force. Single 32¢ commemorative for RCAF 60th anniversary.
1985. Third set of four in Trains series; Christmas.

First day covers: Canada levies servicing fees of 15¢ per cover when it affixes stamps to collectors' own FDCs, and 10¢ per cover when stamps are affixed to covers for hand-back first day servicing. Covers must arrive no later than date of issue for servicing. Official first day covers are 20¢ each, plus the value of the stamps affixed. All values are expressed in Canadian currency.

FDC servicing requests, orders for mint stamps and/or official FDCs, and requests for additional information or order forms should be sent to: Philatelic Service, Canada Post, Ottawa, Ont. K1A 0B5, Canada.

Full details of each issue listed in these programs will be given in news stories throughout the pages of *Linn's*. Reference to the date and page of *Linn's* where those stories appeared is given at the end of each entry.

Scott and Minkus catalog numbers are reported as received, and are subject to change.



The joint issue of France (left) and Canada for the 450th anniversary of Jacques Cartier's first North American voyage of exploration will debut April 20, loaded with "firsts" for both countries. The designs differ only in inscriptions.

Two Flag perf types

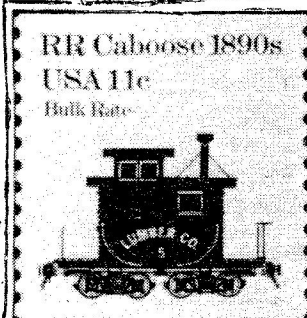
There are now reports that the 20¢ Flag Over Supreme Court stamp in sheet format exists with two types of perforations.

As with other such previous perf changes, the 20¢ Flag sheets exist with both bull's-eye and line perforations. The line perfs run through the sheet margins.

This follows earlier reports that the 40¢ Olympics airmail stamps exist with both bull's-eye and line perfs (*Linn's* Feb. 6, page 1).

Preliminary reports indicate

that both perf varieties — for both the 40¢ Olympics and 20¢ Flag — gauge perf 11, but specialists predict that closer examination will reveal distinguishable perf gauge differences.



The new 11¢ Caboose coil

It is with great sadness that I must report to the RPA Membership the untimely death of Georg Lefebber Feb. 26, 1984. Georg was a very strong supporter and active member of the RPA. Georg had held many positions in the RPA, the last being a Board of Governor representative. He was a Life Member and is survived by his wife, Ruth Lefebber, who is also a RPA Member. He also operated the Rochester Stamp Exchange. We will miss him very much.....

March 1, 1984, marks the birth of a new stamp-issuing entity, Aland, and one of the stamps shows a very useless map of the group of islands in the Gulf of Bothnia between Finland and Sweden.

Another shows the autonomous province's flag, a stand-



Figure 3. Aland's first stamps will include a 1.40-markka denomination showing the province's flag.

ard Nordic cross in red edged in yellow against a blue background (Figure 3).

The Finnish Postal Directorate explains that the colors are a blending of Sweden's yellow-and-blue flag with the colors of the Finnish and Aland coats of arms.

But why did Aland need its own stamps? Politics, so hated by many readers, again rears its ugly head.

The 6,554 named islands and rocks that comprise the islands (the capital is at Mariehamn, on the largest island, Aland) have a rocky history, no pun intended.

Sweden ceded the islands, along with Finland, to czarist Russia in 1809, but the population is Swedish.

Russian fortifications on the islands were destroyed during the Crimean War, and the 1856 Treaty of Paris barred remilitarization.

When President Woodrow Wilson started talking about the self-determination of peoples after World War I, the Alanders believed him and sought to rejoin Sweden.

But the League of Nations would not hear of it. After all, Finland was now independent — and it was staunchly anti-Soviet.

The League provided for autonomy on the demilitarized islands, something the Soviets sought to scuttle after they defeated Finland in the Finnish-Soviet War of 1939-40.

The League's demilitariza-



tion and autonomy clauses were, however, renewed after World War II.

The Soviets kept pushing, and the Finnish parliament renounced the autonomy provisions in 1951, while granting Alanders more self-government.

Still, it hasn't worked. Alanders keep leaving for Sweden and the population keeps going down.

In 1982, Finland's president decreed postal autonomy for the islands. It may have been a sop to the islanders to make them feel more at home under the Finnish flag. ■

\$13.5 million find to aid Britain's postal museum

By Edgar Lewy

A sensational find of sheets of stamps covering the periods of Edward VII, George V, George VI, Edward VIII and Elizabeth II has been discovered by Great Britain's National Postal Museum curator Raife Wellsted.

Turning over the contents of what is described as a "dusty cupboard," he found stored in it complete imperforate imprimatur sheets of stamps covering the reigns mentioned.

These sheets of stamps are complete and are in effect surplus final proofs submitted by the printers for approval to the post office.

Sales are being conducted by Robson Lowe Ltd. of Bournemouth, and will commence in April.

Each sale will gross a hoped

for \$450,000, and it is expected that three sales a year will be conducted over the next ten years, making a potential total revenue of \$13½ million.

Beneficiary will be the National Postal Museum, but some moneys may well be diverted to the British Philatelic Trust while other sums will be used to promote philately nationally.

All the revenue spent will benefit stamp collecting and collectors in general.

This is by far the largest single sum of money ever to be raised in the United Kingdom by philatelic properties for the public benefit, and it remains to be seen exactly how the sales go and how the carefully thought out totals will agree with the aforementioned estimates.

More details will be available when a special interview with the curator of the National Postal Museum has been conducted. ■



The block of four Orchid stamps will debut March 5 in Miami.

Thematic booklet

A free booklet on thematic collecting is offered to interested collectors by the National Philatelic Society of Great Britain.

The 34-page booklet, *Introducing Thematic Collecting*, is a well-presented, slick-paper production authored by Alma Lee.

Lee gives her definition of a theme and discusses selecting a theme, how to gather information, what should be included in a thematic collection and how to plan it.

Given are suggestions for mounting, writeup and presentation, along with ideas on displaying one's collection for competition.

Given is the table of Federa-

tion Internationale de Philatelie (FIP) points for judging a thematic collection, which is important for any topicalist planning on competing on an international level.

The helpful booklet is available for an addressed envelope, at least 8½ by 6 inches in size, and two International Reply Coupons (available at local post offices) from National Philatelic Society, 27 King St., London WC2E 8JD, England. ■

Lockport rarity exists on folded letter

The only complete copy of the Lockport postmaster's provisional known to exist was discovered on a folded letter in the correspondence of its original sender.

Philatelic Gems

By Donna O'Keefe

nal sender.

M.H. Hoover was searching through the correspondence of the firm of Holmes and Moss in Lockport, N.Y., hoping to find unusual covers. He came across a refolded letter.

In the 1800s, it was common for the recipient of a letter to write his reply on a blank page of that letter, refold it, and

mail it back to the original sender.

Collectors can be grateful to Hoover for his curious nature. The letter bore nothing unusu-



The Lockport postmaster's provisional was issued by Hezekiah W. Scovell in 1846.

al on the outside and was postmarked "Geneva, N.Y., Mch. 24."

When he opened it to read its contents, he found the Lock-

port provisional on the inside.

The letter was franked with this 5¢ provisional and sent by Holmes and Moss to Robert Morrell of Geneva.

Morrell jotted his message on the letter, refolded it, and paid the postage at his local post office where it received the Geneva postmark.

The Lockport provisional was issued by Postmaster Hezekiah W. Scovell in 1846. The crude double-line oval stamp reads, "LOCKPORT/PAID/5/N.Y."

It was handstamped in red on buff wove paper. The word "PAID" was added in a second operation. The provisional, when applied to the cover or lettersheet, was then pencanceled with a cross.

letter

The letter found by Hoover also bears a red circular "LOCKPORT, N.Y./5" postmark and a red "PAID" marking.

After Hoover discovered the rarity, he sold it to Scott Stamp and Coin Co. It was later purchased by Count Phillippe la Renotiere von Ferrari.

When the Ferrari collection was auctioned in 1922, Arthur Hind purchased this letter, along with the British Guiana 1856 1¢ magenta, another one-of-a-kind rarity. He paid \$9,385 for the Lockport provisional.

Alfred Caspary bought the letter at the Hind auction in 1933 for \$2,500, and at the Caspary sale conducted by H.R. Harmer in 1955, it realized \$5,500.

Only one other cover has been found which was originally franked with the provisional. Unfortunately, the two Lockport provisionals were torn off, leaving one-third of one and only a trace of the other.

The rare Lockport provisional is listed at \$60,000 in the Scott U.S. Specialized. ■

USISA issues skating cachet

The United States International Speedskating Association issued cacheted 28¢ Olympic Speedskating airmail postcard.

The cards were hand canceled Dec. 29, the first day of issue, at the Olympic Speedskating Rink in Milwaukee, Wis.

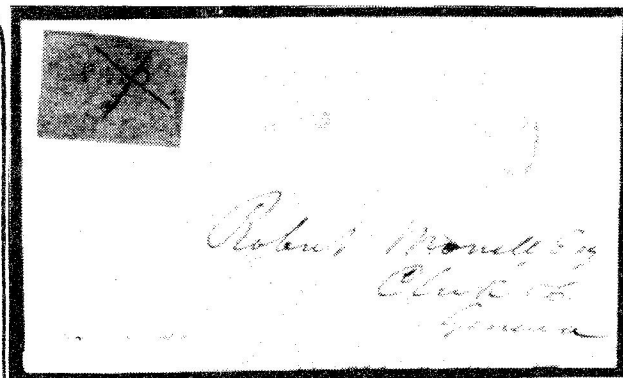
USISA, a nonprofit organization, is the national governing body of speedskating under the U.S. Olympic committee.

The cachet, which was designed by artist Theodore Robare, features a speedskater in front of a large waving American flag. The cachet is printed in red and blue on silver metallic foil.

The cacheted postal cards may be ordered from George Howie, USISA, Beggs Isle, Oconomowoc, Wis. 53066.

The minimum contribution is \$1 per card, and buyers must supply an addressed, stamped envelope or International Reply Coupon. Checks should be made payable to USISA.

An USISA spokesman reports that all proceeds will be used for the development program of the U.S. Olympic speedskating team. ■



The only complete copy of the Lockport provisional known to exist is on a folded letter.

USPS sets withdrawals

The U.S. Postal Service, through its latest Philatelic Sales Division catalog, reveals that a lot of stamps and other philatelic items will be withdrawn from sale March 31.

Among the most numerous withdrawals are all but one of the remaining Prominent Americans definitives in sheet format. Only the 25¢ Frederick Douglass stamp remains, and that will be rendered obsolete in August when the Horace Moses stamp debuts.

The Prominent Americans withdrawals include the 15¢ Oliver Wendell Holmes (revised version, Die II), 20¢ George C. Marshall, 14¢ Fiorello LaGuardia, 6¢ Dwight D. Eisenhower and 40¢ Thomas Paine.

In coil format, the 15¢ Holmes stamp (Die II) is also being taken off sale March 31. The only other coil withdrawal is the 10.9¢ Hansom Cab stamp, an obsolete bulk rate stamp from the current Transportation coil series. The precanceled version of the 10.9¢ stamp is being withdrawn, too.

Other stamps being removed include the

35¢ Glenn Curtiss airmail stamp, and the "special" 1982 Love stamp. Both the bull's-eye and electric eye perforated versions of the previous 20¢ Love stamp are being withdrawn.

Three commemoratives from 1983 are being removed from sale: 20¢ Science and Industry; 20¢ Sweden-U.S. Bicentennial; and 20¢ Balloons (block of four).

Three postal cards are also on the way out: 28¢ First Transpacific Flight; 13¢ LaSalle; and 13¢ Francis Marion, as well as the Sweden-U.S. souvenir card, in both mint and canceled forms.

The current February-March Philatelic Catalog is available from the U.S. Postal Service, Philatelic Sales Division, Washington, D.C. 20265. Orders for any of the aforementioned items may be directed to "March Withdrawals" at the same address.

Customers are reminded of the \$5 minimum and 50¢ handling charge per order. ■

NEWSBRIEFS

Palau's first Shell set to be available at show

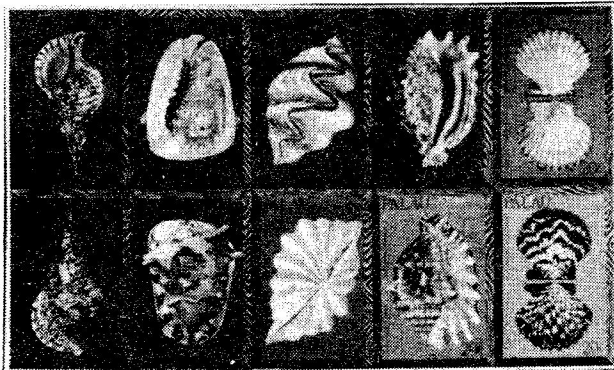
INTERPEX will again serve to showcase a milestone in Palau's philatelic program.

Marking the first anniversary of Palau's first postal issue, the island nation will release on March 15 in Koror, its capital, its new Shells issue, the first set in a projected open-ended series on Palau shells.

Because of the time differential, with Palau 14 hours ahead of New York time, the stamps will be available for the opening day of INTERPEX.

Palau's new issue is a set of ten 20¢ stamps designed by American artist Deborah Dudley Max.

The stamps are each 42 millimeters by 28.4mm, printed in four panes from sheets of 160 stamps, or four full sets per pane.



The new block of ten Palauan Shells stamps is designed to look like the top view of a shell collector's display box.

Brookman forgoes midyear edition

David Macdonald, editor of the Brookman price list of United States, Canada and United Nations stamps, reports that the 1983-84 edition of the list will remain in effect until September 1984.

The list is usually published twice each year, but due to the delayed release of the 1983-84 edition, the company decided to forego the midyear edition, which normally comes out in March.

Macdonald adds that a generally stable stamp market precluded the need for a substantial number of price changes.

The Brookman Stamp Company has issued a flyer listing new issues not contained in the 1983-84 edition, plus a small number of price changes and copy corrections. This flyer may be obtained by sending a No. 10 addressed, stamped envelope to Brookman at the following address.

In addition, a small supply of the 1983-84 edition is still available at \$3.50 (\$2.75 plus 75¢ for postage and handling)

for the perfect bound list and \$5.70 (\$4.95 plus 75¢ for postage and handling) for the spiral bound version.

The company is presently planning to release the 1984-85 edition in September. Further details will be made available at a later date.

Additional information is available from the Brookman Stamp Company, 115 Main Road, Montville, N.Y. 07045. ■



Postmen

The Bath Postal Museum, Bath, England, has issued the fourth in its series of model postmen and postboxes. The new set includes a 1950s postman and postbox manufactured in tin and lead and painted in authentic colors. They were produced by Dorset Soldiers Ltd. The postman is 2½ inches high, and the postbox is 2 inches high. They are priced at £2 and £1.50, respectively. Orders, including 30 pence shipping and handling for one model and 50p for two, should be sent to the Bath Postal Museum, 51 Great Pulteney St., Bath, Avon BA2 4DP, England.

continued from 1 →

Apr 12 "Silent Auction", five lots per member and donation lots are always accepted! 8:00pm. Nominations are OPEN for RPA Offices...

Apr 26 OPEN

May 10 Speakers/slide program.

May 24 OPEN

June 14 Annual RPA Business Meeting and Officer Election, 8:00pm.

June 22 Annual RPA Auction & Banquet, Stephen's Party House, 4370 Dewey Ave. near Lata Rd. Cocktails at 6:30pm & Dinner at 7:15pm.

Steamship Buffet \$9.00 per person with a Cash Bar. Ticket deadline June 15 see any RPA Officer for tickets....

Auction lots will be listed and must be handed to Warren Stevens (223-2543) by June 8th.

All RPA members are welcomed to attend.....

June 28 Slide program, 8:00pm.

July & August Recess

All programs are subject to change.....

The third cachet honors George Eastman, who decided to build his headquarters, Eastman Kodak, in 1892 in Rochester. This headquarters placed the city into the spotlight of world fame by the photography business.

The cachets will be printed in sepia to give them an antique quality on white envelopes, and a different design will be used for each day of the show.

The set of three will sell for \$1.50, and single covers (please specify which cover desired) will sell for 60¢ each.

Requests should include an addressed, stamped No. 10 envelope or International Reply Coupon and a check or money order and be sent to ROPEX

'84 covers at the aforementioned address.

A souvenir card honoring tall ships will also be issued at the show.

The card features a reproduction of the United States 1947 3¢ U.S. Frigate Constitution issue, and background text on tall ships.

The cards are \$1.25 mint, and \$1.50 serviced with the show cancel. Souvenir card orders must include a check or money order and be sent to ROPEX '84 cards at the given address.

ROPEX will also feature a regional meeting of the United States Possessions Philatelic Society at 1 p.m. Saturday, and an Empire State Postal History Society meeting at 11 a.m. Saturday.

ROPEX '84

USPS to record numbers on uncarried space covers

The numbers on the backs of the covers prepared for the August 1983 space shuttle flight but not carried because of lack of space are being recorded and will be shared with collectors.

The United States Postal Service has awarded a contract to a firm to optically scan those numbers and prepare a print-out. The contract calls for the project to be completed no later than April 1.

As reported in past *Linn's* articles, 500,000 covers were pre-

pared for the Aug. 30 to Sept. 5, 1983, shuttle flight into space, but only 261,900 of those covers were carried.

The remaining 238,100 unflown covers were packaged and returned to the USPS for destruction.

Since all of the covers prepared and shipped by the USPS to each of the National Aeronautic and Space Administration's packing facilities were not packed and loaded aboard the space shuttle, some of the covers within the 0 to

261,899 serial number range were not carried, and some that were carried had serial numbers higher than 261,899.

Some collectors have voiced the opinion that the USPS should give an accounting of which serial numbers were flown and which were not.

The USPS has heeded this request and has now made arrangements to have the numbers recorded. *Linn's* plans to list the numbers once they are released. ■

PESA venture delayed

The launching of the new Philatelic Expertizing Service of America (PESA) has been delayed until late spring or early summer of 1984, reports spokesman Bill Shelton, who also is president of the American Stamp Dealers' Association.

PESA is a joint venture of the ASDA and the American Philatelic Society. It is an insurance-backed stamp expertizing service.

At a meeting in Chicago on Feb. 7, officials of PESA reviewed and approved format for all documents to be used in providing certificates with guaranteed opinions.

Some 21 areas of expertise had been qualified at that time, and invitations to other

experts in different areas were approved.

In addition, a meeting of PESA qualified experts was set for 5 p.m. March 17, in New York City during the ASDA's INTERPEX show.

Those experts who have been invited will receive letters of invitation to attend a discussion period at that time.

It is expected that after the meeting, PESA will move more rapidly and an operational date and qualified areas of expertise will be announced, reports Shelton.

Questions about the service should be addressed to the PESA administrator Mercer Bristow, Box 8100, State College, Pa. 16803. ■

Walesa stamp illegal

Solidarity activists in Poland apparently printed a stamp portraying Lech Walesa following the announcement that he had won the 1983 Nobel Peace Prize. It bears a 50-zloty face value.

Larry McInnis reports in *The Gazette*, published in Montreal, that a Christmas card franked with the illegal stamp slipped through the Polish postal system and was delivered to a Polish woman living in Sweden.

The card was mailed and canceled Dec. 22. McInnis reported that a Polish source said anyone caught with "large quantities" of the Walesa stamp could face a prison term of up to three years.

STAMP SHOWS...

1984

NEW YORK

March 3-4 Buffalo, N.Y.

POLKAPEX '84 Stamp Exhibition and Bourse. Polish Cadets Hall, 927 Grant St. Polish Cadets Stamp Club. Casimer D. Kielbasa, Box 154, Cheektowaga, N.Y. 14225-0154. Admission free. Hours Saturday 10 a.m. to 8 p.m.; Sunday 10 a.m. to 5 p.m. Special show cancel available.

March 9-11 Buffalo, N.Y.

Stamp and Coin Bourse. Executive Playboy Motor Lodge, 4243 Genesee St. Greater Buffalo Coin Dealers' Association. Dell Reitz, 2197 Broadway St., Buffalo, N.Y. 14212. Admission \$1; children under 14 free. Hours Friday 11 a.m. to 7 p.m., Saturday 10 a.m. to 7 p.m. and Sunday 10 a.m. to 5 p.m.

March 10-11 East Aurora, N.Y.

EAPEX '84 Stamp Exhibition and Bourse. East Aurora Middle School, Main Street. East Aurora Philatelic Society. Irene Reader, 417 Prospect Ave., East Aurora, N.Y. 14052. Admission free. Hours 10 a.m. to 5 p.m. Special show cancel available.

March 15-18 New York, N.Y.

INTERPEX '84 Stamp Exhibition and Bourse. Madison Square Garden Rotunda. American Stamp Dealers' Association. 5 Dakota Drive, Lake Success, N.Y. 11042. Admission \$2.50. Hours Thursday noon to 7 p.m., Friday 11 a.m. to 8 p.m., Saturday 10 a.m. to 6 p.m. and Sunday 11 a.m. to 5 p.m. Special show cancel available.

March 18 Cheektowaga, N.Y.

Postcard Exhibition and Bourse. Club 1581, 4499 Genesee St. Buffalo Postcard Club. Lee C. Bowen, 641 Fletcher St., Tonawanda, N.Y. 14150. Admission \$1. Hours 9:30 a.m. to 5:30 p.m. Special show card available.

ROPEX 1984

March 23-25 Rochester, N.Y.

ROPEX '84 Stamp Exhibition and Bourse. Holiday Inn, 120 E. Main St. Rochester Philatelic Association. Larry Moriarty, Box 10206, Brighton Station, Rochester, N.Y. 14610. Admission free. Hours Friday 10 a.m. to 7 p.m., Saturday 10 a.m. to 6 p.m. and Sunday 10 a.m. to 5 p.m. Special show cancel available.

March 25 Auburn, N.Y.

ASPEX '84 Stamp Exhibition and Bourse. Cayuga County 4H Building, Grant Avenue. Auburn Stamp Club. Ray Turnbull, Box 1037, Weedsport, N.Y. 13166. Admission free. Hours 10 a.m. to 5 p.m.

April 13-15 Buffalo, N.Y.

ALPEX '84 Stamp, Coin Exhibition and Bourse. American Legion Post 799, 385 Paderewski Drive. Plewacki Post Stamp Society. Stanley A. Keane, 295 Barnard St., Buffalo, N.Y. 14206. Admission free. Hours Friday 10 a.m. to 9 p.m., Saturday 10 a.m. to 6 p.m. and Sunday 10 a.m. to 5 p.m. Special show cancel available.

Rochester Philatelic Association, Inc.

RPA

Post Office Box 10206
Brighton Station
Rochester, NY 14610

The Minges & Tongs is published bimonthly by the Rochester Philatelic Association, Inc., P.O. Box 3806, Brighton Sta., Rochester, NY 14610. Typed Articles must be submitted by the 25th. Editor: John Kellas III.